

DT 980-01

PARTS LIST

6x4 Transporter

DIAMOND T MOTOR CAR CO.



Model 980

CONTRACT NUMBERS

CANADIAN
C.D.L.V. 332.
C.D.L.V. 464.
C.D.L.V. 493.
C.D.L.V. 509.

PARTS LIST

6x4 Transporter

DIAMOND T MOTOR CAR CO.



Model 980

Serial Numbers

9801709 TO 9802385

CONTRACT NUMBERS

CANADIAN

C.D.L.V. 332.

C.D.L.V. 464.

C.D.L.V. 493.

C.D.L.V. 509.

DIAMOND T MOTOR CAR COMPANY

FACTORIES: CHICAGO, ILLINOIS, U. S. A.

ISSUED BY

Diamond T Motor Car Company, Service Department,
4401 WEST 26th STREET, CHICAGO, ILL., U. S. A.

FOREWORD

In the preparation of this Parts List, a system of grouping has been used, the arrangement of which may be found on the following page. Group numbers are composed of four figures, the first two of which index the main group, while the two following figures indicate those sub-groups of parts which comprise the main groups. For example, the Engine Group is 01; the Electrical Group 06; the Front Axle Group 10, etc. Subdivisions such as Connecting Rods and Bearings are 0104; Light Switches and Cables, 0606; Steering Knuckle, Flange and Arm, 1006, etc.

Part numbers are separately listed in numerical order and indexed to the groups in which they may be found, while an alphabetical index to the parts keying them to their group is also provided at the end of this book.

In the body of the list it has been our effort to make the descriptions complete and to use illustrations which are accurate and of practical value.

DIAMOND T MOTOR CAR COMPANY

Factories and Main Parts Warehouses:

CHICAGO, ILLINOIS, U. S. A.

Arrangement of Parts Groups

01 Engine Group

- 0100 Engine Assembly
- 0101 Cylinder Block and Head
- 0102 Crankshaft, Bearings and Caps
- 0103 Pistons, Rings and Piston Pins
- 0104 Connecting Rods and Bearings
- 0105 Valves, Springs, Guides, Tappets, Etc., Lifts,
Rocker Arms and Shaft
- 0106 Camshaft, Timing, Bearings, Etc.
- 0107 Oil Pump, Oil Pan, Gauge
- 0108 Manifold
- 0109 Flywheel, Ring Gear, Etc.
- 0110 Mountings

02 Clutch Group

- 0200 Clutch Assembly
- 0201 Clutch Disc
- 0202 Cover, Pressure Plate and Springs
- 0203 Release Lever, Bearings, Forks, Etc.
- 0204 Pedal
- 0205 Pilot Bearing

03 Fuel System Group

- 0300 Fuel Tank
- 0301 Air Cleaner
- 0302 Fuel Pump, Fuel Pump Tube, Hose, Etc.
- 0303 Accelerator and Throttle
- 0304 Fuel Tank Lines to Gauge

04 Exhaust Group

- 0401 Muffler
- 0402 Pipe and Tail Pipe

05 Cooling Group

- 0501 Radiator Shell and Core
- 0502 Thermostat and Heat Indicator
- 0503 Water Pump, Fan, Belt
- 0504 Radiator Mountings
- 0505 Engine Water Fittings and Hose

06 Electrical Group

- 0601 Generator and Regulator
- 0602 Starting Motor
- 0605 Instruments and Carrier
- 0606 Light Switches and Cables
- 0607 Headlamps, Sealed Beams, Bulbs and Fuses
- 0608 Tail and Auxiliary Lamp
- 0609 Horn
- 0610 Battery, Starting Cables and Connections

07 Transmission Group

- 0700 Transmission
- 0701 Case
- 0702 Gears
- 0703 Main Drive Pinion and Bearings
- 0704 Main Shaft, Countershaft, and Reverse Idler
Countershaft
- 0705 Speedometer Drive Gears
- 0706 Shift Forks, Levers

08 Auxiliary Transmission Group

- 0800 Auxiliary Transmission Assembly
- 0801 Case
- 0802 Drive Gear, Shaft, Bearings
- 0803 Driven Gear, Shaft, Bearings
- 0805 Shifter Shafts, Yokes, and Shift Levers
- 0809 Power Take-Off

09 Propeller Shaft and Universal Joint Group

- 0901 Propeller Shaft Assembly
- 0902 Universal Joints

10 Front Axle Group

- 1000 Front Axle Assembly
- 1001 Housing
- 1006 Steering Knuckle, Flange and Arm

11 Rear Axle Group

- 1100 Rear Axle Assembly
- 1101 Housing Assembly
- 1102 Axle Drive Shafts
- 1103 Differential and Carrier Assembly
- 1104 Differential Side Gears and Pinions
- 1105 Drive Gear and Bearings

12 Brake Group

- 1201 Hand Brake
- 1202 Shoes and Facing
- 1203 Brake Shoe Support, Guide, Springs,
Adjusting Pins, and Anchor Plate
- 1204 Pedal
- 1205 Air Brake Tank, Compressor, Governor, Valves
- 1206 Tubes and Clips, Brackets, Springs
- 1207 Brake Chambers
- 1208 Brake Dust Shields
- 1209 Brake Lines, Pipes, Hoses
- 1212 Cross Shafts and Pull Rods

13 Wheel, Hub and Drum Group

- 1301 Wheel Assembly, Bearings, Retainers, Etc.
- 1302 Hubs and Drums

14 Steering Group

- 1401 Steering Connecting Rod (Drag Link)
- 1402 Axle Tie Rod
- 1403 Gear Assembly
- 1404 Wheel Assembly
- 1405 Brackets

15 Frame and Brackets Group

- 1500 Frame and Brackets
- 1501 Towing Attachment
- 1502 Pistle Hooks
- 1504 Running Board Hangers

16 Spring Group

- 1601 Front and Rear Springs and Spring Bumpers
- 1602 Shackles and Spring Attaching Parts

17 Hood, Fender, Running Board, Apron (Misc. Sheet Metal) Group

- 1701 Fenders
- 1703 Running Boards
- 1704 Hood

18 Body Group

- 1800 Cab Body Assy. and Parts
Transporter Body Parts List
- 1801 Windshield Wiper

19 Winch Assy. — Winch and Hoist Control Levers

- 1900 Winch and Winch Drive Shafts
- 1910 Control Levers and Rods

21 Bumper and Guard Group

- 2101 Bumpers
- 2103 Radiator Guard

22 Miscellaneous Body, Chassis and Accessories Group

- 2200 Identification and Caution Plates
- 2201 Rear View Mirrors
- 2203 Speedometer

23 General Use, Standardized Parts Group

- 2300 Miscellaneous Tools, Tire Chains, Extinguishers
- 2304 Miscellaneous Nuts, Bolts, Screws, and Washers
- 2305 Miscellaneous Cotter Pins, Woodruff Keys

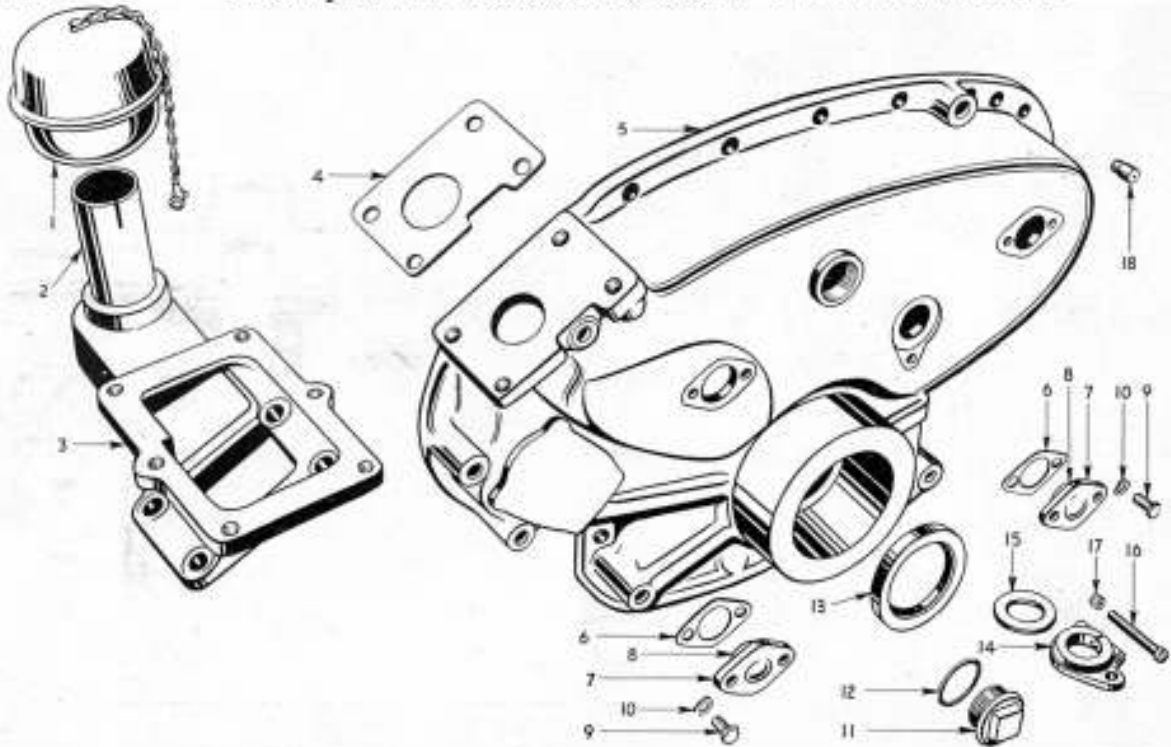
DIAMOND T MOTOR CAR COMPANY

Code	Mfr. No.	Description	Order by this Number	Quantity Required
01 — ENGINE				
0100 — Engine Assembly				
	DFXE	Engine assembly	DX-6083	1
0101 — Cylinder Block and Head				
		Cylinder block assy. with pistons, pins and rings.....	BB-23611ASY	
88020E		Cylinder block only — assembly	BB-23611	1
88021C		Cylinder liner	BB-23459	6
86319A		Cylinder block combustion liner — upper	BB-23536	6
86318A		Cylinder block combustion liner — lower	BB-23537	6
14141A		Cylinder block combustion liner pin	BB-23539	6
88219A		Cylinder block cylinder head stud	BB-23312	40
80992A		Cylinder block spray nozzle sleeve	BB-23839	6
14145A		Cylinder block spray nozzle sleeve stud	BB-23843	12
59A		Cylinder block pipe plug (3/8")	11339F	4
14196A		Cylinder block pipe plug (1 1/4")	DX-611J	13
4746A		Cylinder block pipe plug (3/4")	21224R	14
4598A		Cylinder block to bell housing stud (5/8x2 1/4")	BB-23607	5
4802A		Cylinder block oil pump attaching dowel	BB-23801	2
1707A		Cylinder block gear cover dowel	1267R	2
4283A		Cylinder block water pump attaching stud	BB-23755	1
14258A		Cylinder block oil filter attaching stud	BB-21404	4
88825C		Torque arm support — L.H.	BB-23721	1
4928A		Torque arm support screw (3/8x2"-11)	DX-158	3
4923A		Torque arm support stud	BB-23724	1
1124A		Torque arm support stud nut (3/8"-18)	DX-1032C	1
1126A		Torque arm support stud nut lockwasher (3/8")	DX-262	4
66196A		Torque arm support dowel	BB-23722	2
88827C		Torque arm support — R.H.	BB-23720	1
4708A		Torque arm support screw (5/8x1 3/4"-11)	DX-157	2
4570A		Torque arm support screw (5/8x1 1/2"-11)	DX-156	2
1126A		Torque arm support screw lockwasher (3/8")	DX-262	4
88828A		Torque arm support dowel	BB-23723	2
14101A		Drain cock (3/8")	BB-23602	1
88308E		Cylinder head	BB-23310	2
88301D		Cylinder head gasket	BB-23311	2
82098A		Cylinder head attaching nut	BB-23314	40
11260A		Cylinder head attaching stud plain washer	BB-23313	40
85009A		Cylinder head valve guide — intake	BB-23401	6
85029A		Cylinder head valve guide — exhaust	BB-23406	6
7165A		Cylinder head pipe plug (1")	11224F	6
59A		Cylinder head pipe plug — end — (3/8")	11339F	4
14155A		Cylinder head to exhaust manifold stud	BB-23334	12
88746A		Lifting eye	BB-23315	2
1075A		Cylinder head pipe plug (1/2")	DX-611E	12
88100D		Cylinder head cover	BB-23300	2
88099B		Cylinder head cover gasket	BB-23303	2
13354A		Cylinder head cover attaching screw (3/8x4 1/4"-16)	BB-23302	18
4877A		Cylinder head cover attaching screw (3/8x2 1/2"-16)	13431R	8
14416A		Cylinder head cover screw plain washer	BB-7825	26
342A		Cylinder head cover screw lockwasher	DX-254	26
60A		Cylinder head cover oil drain plug	41412C	2
88034E		Gear cover	BB-23550	1
88035C		Gear cover gasket	BB-23552	1
88036A		Gear cover crankshaft seal	BB-23551	1
88066A		Gear cover camshaft thrust plate	BB-23555	1
88067A		Gear cover camshaft thrust plug	BB-23557	1
88068A		Gear cover camshaft thrust plate shim	BB-23556	20 APP.
88066A		Gear cover fuel pump drive thrust plate	BB-23555	1

**01
ENGINE**

980 — 6 x 4 — PARTS LIST

Code	Mtr. No.	Description	Order by this Number	Quantity Required
88067A		Gear cover fuel pump drive thrust plug	BB-23557	1
88068A		Gear cover fuel pump drive thrust plate shim	BB-23556	20 APP.
4072A		Gear cover thrust plate attaching screw (3/8x3/8"-16)	DX-110A	4
342A		Gear cover thrust plate attaching screw lockwasher (3/8")	DX-254	4
31244A		Gear cover chain inspection plug	13362R	1
31245A		Gear cover chain inspection plug gasket	13566R	1
4339A		Gear cover to cylinder block attaching screw (1/2x1 1/2"-13)	DX-134	10
4384A		Gear cover to cylinder block attaching screw (1/2x3 3/8"-13)	61274R	4
4524A		Gear cover to cylinder block attaching screw (1/2x4 5/8"-13)	DX-142E	2
312A		Gear cover to cylinder block attaching screw lockwasher (1/2")	DX-258	16
DFXE		Engine gasket set	BB-21010	1
88158D		Air compressor bracket	BB-21500	1
88753A		Air compressor bracket gasket	BB-21501	1
352A		Air compressor bracket screw	DX-133	4
312A		Air compressor bracket screw lockwasher	DX-258	4



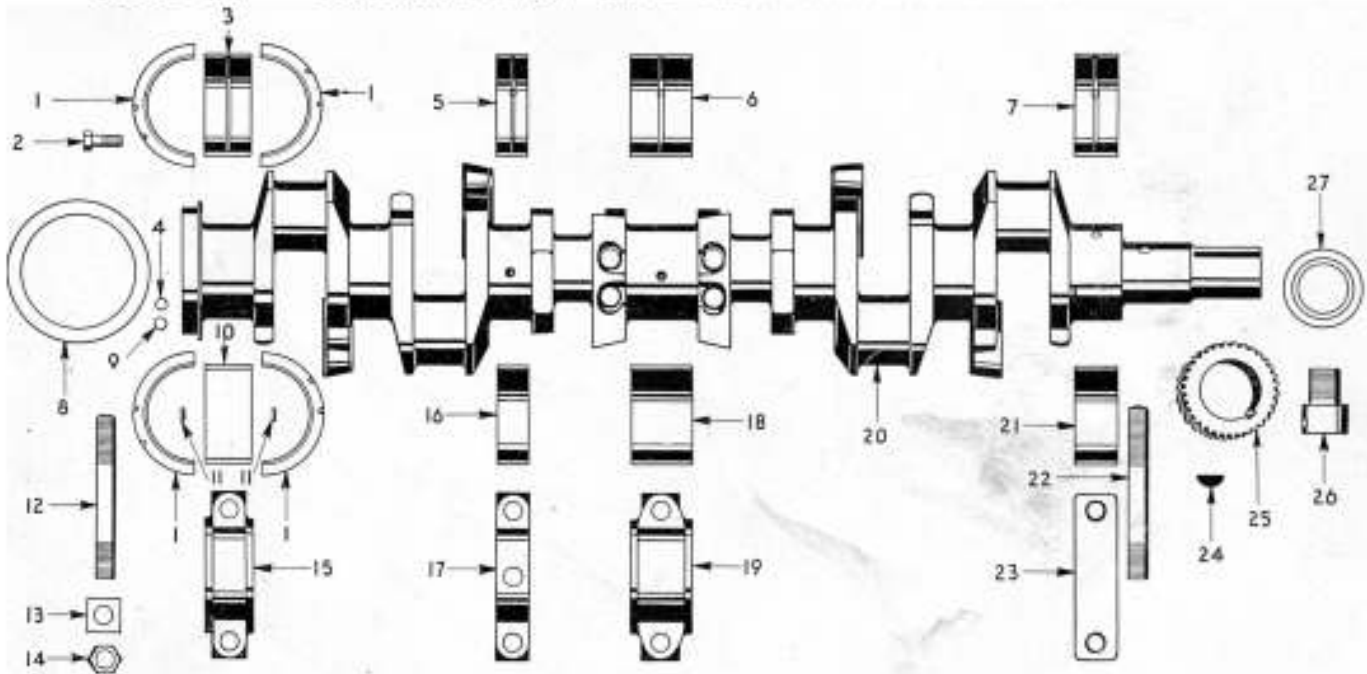
1. Breather assembly	BB-21191	10. Thrust plate attaching screw lockwasher	DX-254
2. Breather tube	BB-21192	11. Inspection plug	13362R
3. Air compressor bracket	BB-21500	12. Inspection plug gasket	13566R
4. Air compressor bracket gasket	BB-21501	13. Crankshaft seal	BB-23551
5. Gear cover	BB-23550	14. Support bracket	BB-23667
6. Thrust plate shim	BB-23556	15. Cork seal	
7. Thrust plate	BB-23555	16. Adjusting screw	DX-586RR
8. Thrust plug	BB-23557	17. Nut	DX-188
9. Thrust plate attaching screw	DX-110A	18. Dowel	1267R

14386A	Air compressor to bracket screw	DX-122	4
335A	Air compressor to bracket screw lockwasher	DX-256	4
88159C	Air compressor driven pulley	BB-21502	1
74866A	Air compressor lubrication tube assembly	BB-21544	1
1533A	Air compressor lubrication tube union	V-314	1
88796BS	Air compressor breather assembly	BB-21191	1
88786A	Air compressor breather tube	BB-21192	1
5871A	Air compressor breather cap chain screw	BB-21193	1

DIAMOND T MOTOR CAR COMPANY

**0102
ENGINE**

Code	Mir. No.	Description	Order by this Number	Quantity Required
0102 — Crankshaft Bearings and Caps				
88605D		Crankshaft	BB-23650	1
88039B		Crankshaft gear	BB-23651	1
4561A		Crankshaft gear key	BB-23652	1
3587A		Crankshaft flywheel screw	BB-23601	8
267A		Crankshaft flywheel screw lock wire	1104R	1
1707A		Crankshaft flywheel dowel	1267R	2
665A		Crankshaft flywheel expansion plug	1246R	2
14621A		Crankshaft oil wick assembly	BB-23653	1
88885A		Starting crank grab	BB-21323	1
88112B—std.		Front main bearing — upper — std.	BB-23612	1
88112B—.002 u/s		Front main bearing — upper —.002 u/s	BB-23613	1
88112B—.005 u/s		Front main bearing — upper —.005 u/s	BB-23614	1
88112B—.010 u/s		Front main bearing — upper —.010 u/s	BB-23615	1
88108B—std.		Front main bearing — lower — std.	BB-23618	1



1. Rear main bearing thrust flange.....	BB-23649	15. Rear main bearing cap.....	BB-23642
2. Flywheel screw	BB-23601	16. Intermediate main bearing — lower.....	BB-23660
3. Rear main bearing — upper.....	BB-23637	17. Intermediate main bearing cap.....	BB-23659
4. Flywheel expansion plug.....	1246R	18. Center main bearing — lower.....	BB-23631
5. Intermediate main bearing — upper.....	BB-23656	19. Center main bearing cap.....	BB-23630
6. Center main bearing — upper.....	BB-23625	20. Crankshaft	BB-23650
7. Front main bearing — upper.....	BB-23612	21. Front main bearing — lower.....	BB-23618
8. Oil seal	BB-23606	22. Front main bearing cap stud.....	BB-23681
9. Flywheel dowel	1267R	23. Front main bearing cap	BB-23617
10. Rear main bearing — lower.....	BB-23643	24. Crankshaft gear key.....	BB-23652
11. Rear main bearing thrust flange dowel.....	51166F	25. Crankshaft gear	BB-23651
12. Intermediate center and rear cap stud.....	BB-23682	26. Starting crank grab	BB-21323
13. Main bearing cap stud nut retainer washer.....	BB-23684	27. Oil seal	BB-23551
14. Main bearing cap stud nut.....	BB-23683		

88108B—.002 u/s	Front main bearing — lower —.002 u/s	BB-23619	1
88108B—.005 u/s	Front main bearing — lower —.005 u/s	BB-23621	1
88108B—.010 u/s	Front main bearing — lower —.010 u/s	BB-23622	1
88091C	Front main bearing cap	BB-23617	1
88107B	Front main bearing cap stud	BB-23681	2
88113B—std.	Center main bearing — upper — std.	BB-23625	1
88113B—.002 u/s	Center main bearing — upper —.002 u/s	BB-23626	1

**0102
0104
ENGINE**

980 — 6 x 4 — PARTS LIST

Code	Mfr. No.	Description	Order by this Number	Quantity Required
88113B—.005 u/s		Center main bearing — upper — .005 u/s	BB-23627	1
88113B—.010 u/s		Center main bearing — upper — .010 u/s	BB-23628	1
88109B—std.		Center main bearing — lower — std.	BB-23631	1
88109B—.002 u/s		Center main bearing — lower — .002 u/s	BB-23632	1
88109B—.005 u/s		Center main bearing — lower — .005 u/s	BB-23633	1
88109B—.010 u/s		Center main bearing — lower — .010 u/s	BB-23634	1
88093C		Center main bearing cap	BB-23630	1
88114B—std.		Rear main bearing — upper — std.	BB-23637	1
88114B—.002 u/s		Rear main bearing — upper — .002 u/s	BB-23638	1
88114B—.005 u/s		Rear main bearing — upper — .005 u/s	BB-23639	1
88114B—.010 u/s		Rear main bearing — upper — .010 u/s	BB-23640	1
88110B—std.		Rear main bearing — lower — std.	BB-23643	1
88110B—.002 u/s		Rear main bearing — lower — .002 u/s	BB-23644	1
88110B—.005 u/s		Rear main bearing — lower — .005 u/s	BB-23645	1
88110B—.010 u/s		Rear main bearing — lower — .010 u/s	BB-23646	1
88094C		Rear main bearing cap	BB-23642	1
88116B		Rear main bearing thrust flange	BB-23649	4
4765A		Rear main bearing thrust flange dowel	51166F	2
88115B—std.		Intermediate main bearing — upper — std.	BB-23656	4
88115B—.002 u/s		Intermediate main bearing — upper — .002 u/s	BB-23657	4
88115B—.005 u/s		Intermediate main bearing — upper — .005 u/s	BB-23658	4
88115B—.010 u/s		Intermediate main bearing — upper — .010 u/s	BB-23659	4
88111B—std.		Intermediate main bearing — lower — std.	BB-23660	4
88111B—.002 u/s		Intermediate main bearing — lower — .002 u/s	BB-23661	4
88111B—.005 u/s		Intermediate main bearing — lower — .005 u/s	BB-23662	4
88111B—.010 u/s		Intermediate main bearing — lower — .010 u/s	BB-23663	4
88092C		Intermediate main bearing cap	BB-23655	4
		Main bearing bushing set (14 pieces) std.	BB-23590	1
		Main bearing bushing set (14 pieces) .002 u/s	BB-23591	1
		Main bearing bushing set (14 pieces) .005 u/s	BB-23592	1
		Main bearing bushing set (14 pieces) .010 u/s	BB-23593	1
88106B		Intermediate center and rear cap stud	BB-23682	12
88105A		Main bearing cap stud nut	BB-23683	14
88104A		Main bearing cap stud nut retainer washer	BB-23684	14
0103 — Pistons, Rings and Pins				
88022, 20, 17		Piston — with pin — std. (5 $\frac{1}{8}$ " diameter)	BB-23450	6
88022, 20, 17		Piston — with pin — .005 o/s	BB-23453	6
88022, 20, 17		Piston — with pin — .010 o/s	BB-23452	6
86020B		Piston pin	BB-23460	6
86020B		Piston pin — .002 o/s	BB-23461	6
86017A		Piston pin retainer	BB-23467	12
3846A—std.		Piston ring — compression — std. — ($\frac{1}{8}$ " wide)	BB-23470	24
3846—.005 o/s		Piston ring — compression — .005 o/s	BB-23471	24
3846A—.010 o/s		Piston ring — compression — .010 o/s	BB-23472	24
3846A—.020 o/s		Piston ring — compression — .020 o/s	BB-23473	24
3932A—std.		Piston ring — oil ring — std. — ($\frac{1}{4}$ " wide)	BB-23480	12
3932A—.005 o/s		Piston ring — oil ring — .005 o/s	BB-23481	12
3932A—.010 o/s		Piston ring — oil ring — .010 o/s	BB-23482	12
3932A—.020 o/s		Piston ring — oil ring — .020 o/s	BB-23483	12
0104 — Connecting Rods and Bearings				
88095CSY		Connecting rod assembly — std.	BB-21090	6
4803A		Connecting rod cap dowel	BB-21093	12
86103A		Connecting rod cap nut ($\frac{3}{4}$ "x16 S.A.E.)	BB-21101	12
302A		Connecting rod cap nut cotter pin ($\frac{1}{8}$ "x $\frac{1}{4}$ ")	DX-215	12
88607B—std.		Connecting rod bearing — std.	BB-21094	12
88607B—.002 u/s		Connecting rod bearing — .002 u/s	BB-21095	12
88607B—.005 u/s		Connecting rod bearing — .005 u/s	BB-21096	12
88607B—.010 u/s		Connecting rod bearing — .010 u/s	BB-21097	12
85291A		Connecting rod bushing	BB-21085	6