

# TM9-805

WAR DEPARTMENT TECHNICAL MANUAL

---

## 1 $\frac{1}{2}$ -TON 4 x 4 TRUCK (Chevrolet)

**RESTRICTED** DISSEMINATION OF RESTRICTED MATTER —  
No person is entitled solely by virtue of his grade or position to  
knowledge or possession of classified matter. Such matter is en-  
trusted only to those individuals whose official duties require such  
knowledge or possession. (See also paragraph 23b, AR 380-5,  
15 March 1944.)



*WAR DEPARTMENT TECHNICAL MANUAL*

*TM 9-805*

For supersession of Quartermaster Corps 10—series manuals, see paragraph 1 d

---

**1½ - TON  
4 x 4 TRUCK  
(Chevrolet)**



*WAR DEPARTMENT*

• *30 DECEMBER 1943*

---

**RESTRICTED DISSEMINATION OF RESTRICTED MATTER—**  
No person is entitled solely by virtue of his grade or position to knowledge or possession of classified matter. Such matter is entrusted only to those individuals whose official duties require such knowledge or possession. (See also paragraph 23b, AR 380-5, 15 March 1944.)

---

WAR DEPARTMENT  
Washington 25, D. C., 30 December 1943

TM 9-805—1½-ton 4 x 4 Truck (Chevrolet), is published for the information and guidance of all concerned.

[A. G. 300.7 (22 Nov 43)]

BY ORDER OF THE SECRETARY OF WAR:

G. C. MARSHALL,  
*Chief of Staff.*

OFFICIAL:

J. A. ULIO,  
*Major General,  
The Adjutant General.*

DISTRIBUTION: X.

(For explanation of symbols, see FM 21-6.)

# 1½-TON 4 x 4 TRUCK (Chevrolet)

---

## CONTENTS

### PART ONE—VEHICLE OPERATING INSTRUCTIONS

SECTION		Paragraphs	Pages
I	Introduction .....	1	5-8
II	Description and tabulated data..	2-4	9-12
III	Driving controls and operation...	5-10	13-23
IV	Auxiliary equipment controls and operation .....	11-15	24-27
V	Operation under unusual conditions .....	16-21	28-30
VI	First echelon preventive mainte- nance service .....	22-26	31-41
VII	Lubrication .....	27-29	42-49
VIII	Tools and equipment stowage on vehicle .....	30-32	50-51

### PART TWO—VEHICLE MAINTENANCE INSTRUCTIONS

IX	Record of modifications.....	33	52
X	Second echelon preventive maintenance .....	34	53-73
XI	Organization tools and equipment	35-36	74
XII	Trouble shooting .....	37-55	75-95
XIII	Engine—Description, data, mainte- nance, and adjustment in vehicle	56-65	96-112
XIV	Engine—Removal and installation	66-67	113-117
XV	Clutch .....	68-70	118-124

**1 1/2-TON 4 x 4 TRUCK (Chevrolet)**

**PART TWO—VEHICLE MAINTENANCE INSTRUCTIONS (Cont'd)**

	<b>Paragraphs</b>	<b>Pages</b>
SECTION XVI Fuel system .....	71-76	125-130
XVII Intake and exhaust system.....	77-78	131-133
XVIII Cooling system .....	79-84	134-139
XIX Electrical system, instruments, and gages .....	85-95	140-171
XX Transmission .....	96-98	172-174
XXI Transfer case .....	99-102	175-177
XXII Propeller shafts .....	103-105	178
XXIII Front axle .....	106-114	179-185
XXIV Rear axle .....	115-119	186-190
XXV Brake system .....	120-130	191-206
XXVI Wheels, wheel bearings, hubs, and tires .....	131-134	207-212
XXVII Springs and shock absorbers.....	135-138	213-216
XXVIII Steering gear .....	139-145	217-221
XXIX Cab, body, and frame.....	146-148	222-226
XXX Chassis sheet metal.....	149-153	227-229
XXXI Power take-off .....	154-159	230-234
XXXII Winch .....	160-162	235-241
XXXIII Hoist .....	163-166	242-247
XXXIV New vehicle run-in test.....	167-169	248-252
XXXV Shipment and temporary storage	170-172	253-257
REFERENCES .....		258-259
INDEX .....		260

# PART ONE—VEHICLE OPERATING INSTRUCTIONS

## Section I

### INTRODUCTION

	Paragraph
Scope .....	1

#### I. SCOPE.

a. This technical manual\* is published for the information and guidance of the using arm personnel charged with the operation and maintenance of this materiel.

b. In addition to a description of 1½-ton 4 x 4 truck (Chevrolet), this manual contains technical information required for the identification, use, and care of the materiel. This manual is divided into two parts. Part One, section I through section VIII, contains vehicle operating instructions. Part Two, section IX through section XXXV, contains vehicle maintenance instructions for using arm personnel charged with the responsibility of doing maintenance work within their jurisdiction.

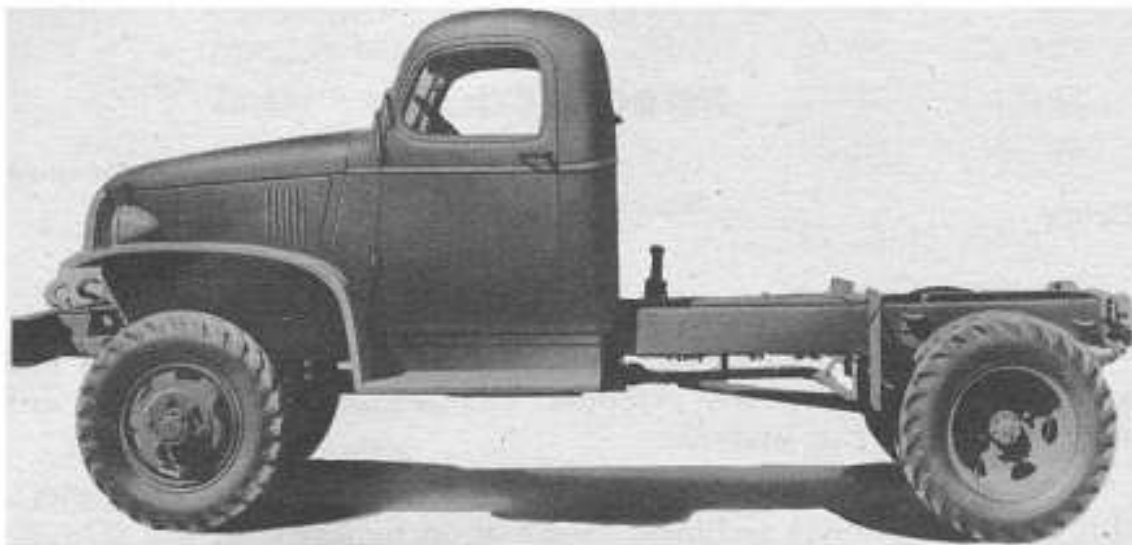
c. In all cases where the nature of the repair, modifications, or adjustment is beyond the scope or facilities of the unit, the responsible ordnance service should be informed so that trained personnel with suitable tools and equipment may be provided, or proper instructions issued.

d. This technical manual supersedes the organizational maintenance instructions in the following Quartermaster Corps publications:

	Date	Name
TM 10-1127	1 March 1942	1½-ton Truck, 4 x 4 (Chevrolet)
TM 10-1203	1 March 1942	1½-ton Truck, 4 x 4 (Chevrolet)
Changes Nos. 1 through 4		
TM 10-1431	28 June 1943	1½-ton Truck, 4 x 4 (Chevrolet)
TM 10-1461	1 April 1942	1½-ton Truck, 4 x 4 panel (Chevrolet)
TM 10-1557	15 July 1942	1½-ton Truck, 4 x 4 (Chevrolet)
TM 10-1559	1 August 1942	1½-ton Truck, 4 x 4 (Chevrolet)

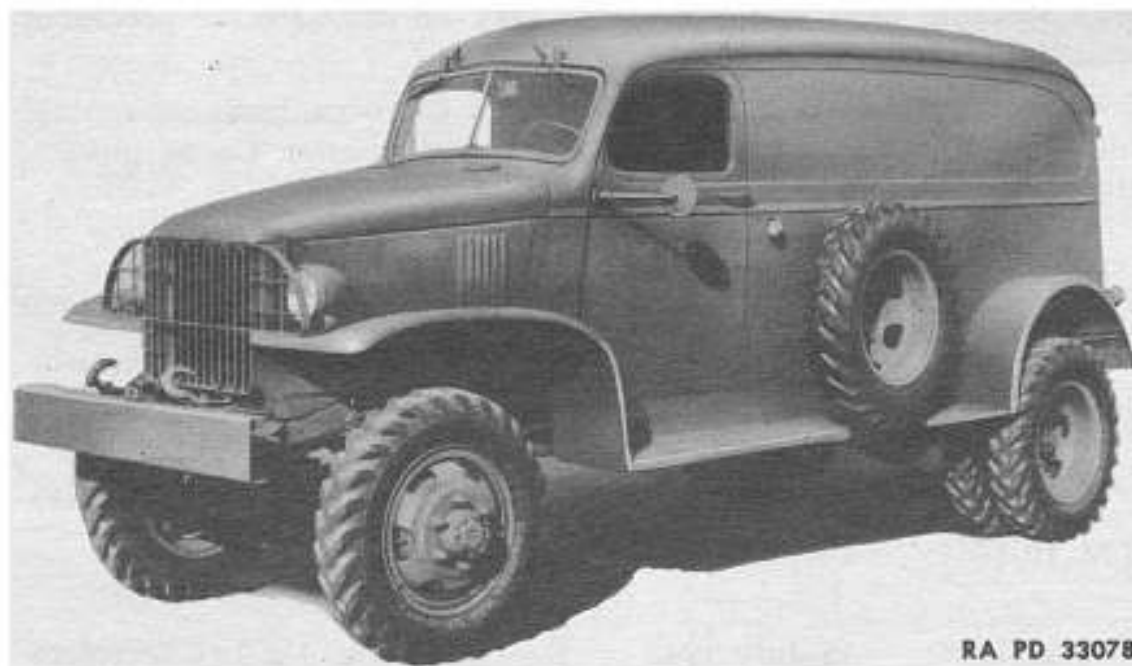
\*To provide operating instructions with the materiel, this technical manual has been published in advance of complete technical review. Any errors or omissions will be corrected by changes or, if extensive, by an early revision.

**1 1/2-TON 4 x 4 TRUCK (Chevrolet)**



RA PD 33077

**Figure 1—Chevrolet 1 1/2-Ton, 4 x 4 Truck  
Model G-7103—Chassis with Cab  
Model G-7113—Cab Tractor**

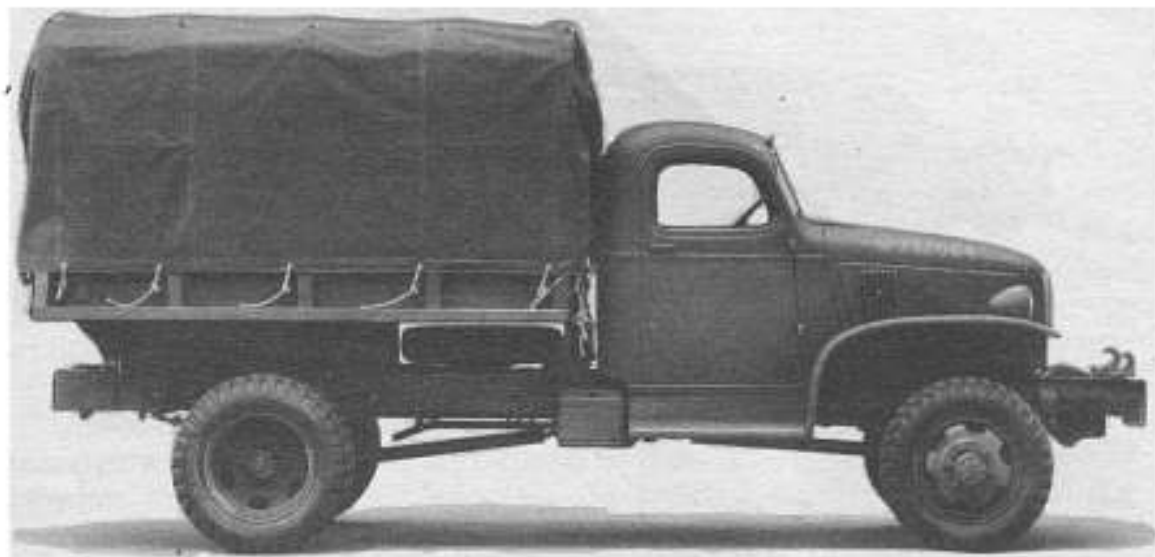


RA PD 33078

**Figure 2—Chevrolet 1 1/2-Ton, 4 x 4 Truck  
Model G-7105—Panel**



## INTRODUCTION



RA PD 33080

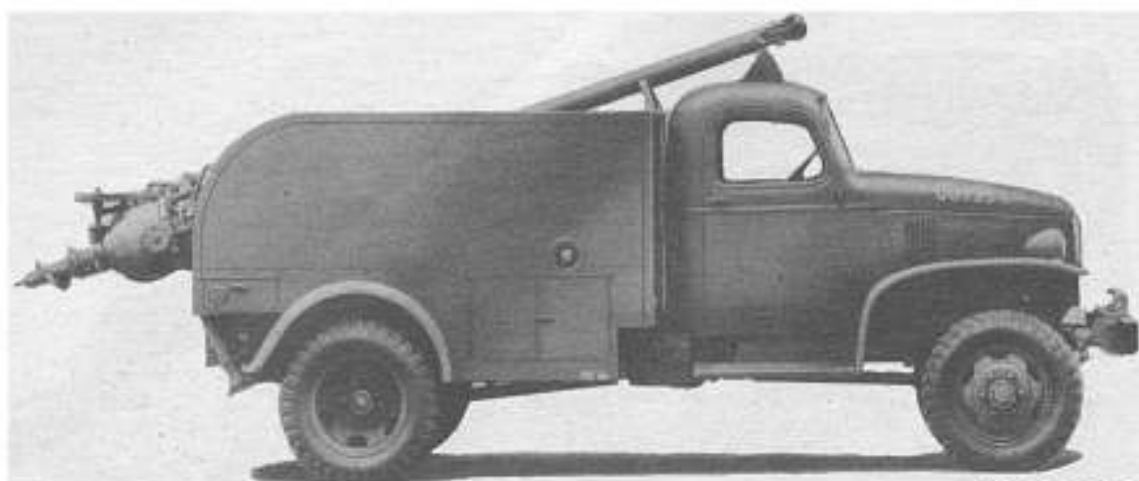
**Figure 3—Chevrolet 1 1/2-Ton, 4 x 4 Truck  
Model G-7106—Dump less Winch  
Model G-7116—Dump with Winch**



RA PD 33079

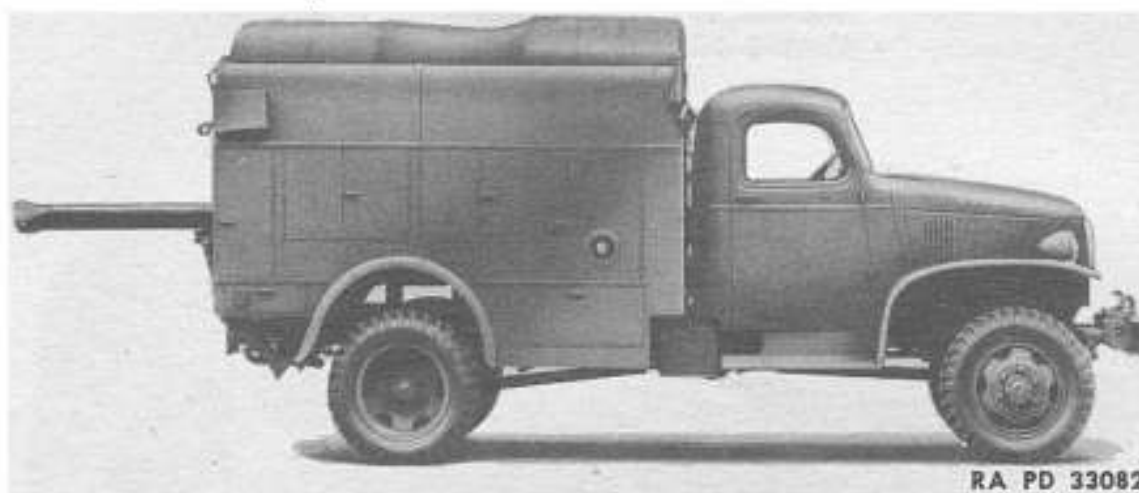
**Figure 4—Chevrolet 1 1/2-Ton, 4 x 4 Truck  
Model G-7107—Cargo less Winch  
Model G-7117—Cargo with Winch**

**1 1/2-TON 4 x 4 TRUCK (Chevrolet)**



RA PD 33081

**Figure 5—Chevrolet 1 1/2-Ton, 4 x 4 Truck  
Model G-7163—Telephone Earth Borer**



RA PD 33082

**Figure 6—Chevrolet 1 1/2-Ton, 4 x 4 Truck  
Model G-7173—Telephone Maintenance**