

MAINTENANCE MANUAL

1/2 TON 4 x 4 CHASSIS

DODGE TRUCKS

built for

UNITED STATES ARMY

<u>Model</u>	<u>Type of Vehicle</u>	<u>Model</u>	<u>Type of Vehicle</u>
WC-1	Closed Cab—Pickup	WC-17	Carryall
WC-3	Open Cab—Pickup	WC-18	Ambulance
WC-4	Open Cab—Pickup w/Winch	WC-19	Panel
WC-5	Closed Cab—Pickup	WC-20	Closed Cab—No Body
WC-6	Command Reconnaissance	WC-21	Open Cab—Pickup
WC-7	Command Recon. w/Winch	WC-22	Open Cab—Pickup w/Winch
WC-8	Radio Panel	WC-23	Command Reconnaissance
WC-9	Ambulance	WC-24	Command Recon. w/Winch
WC-10	Carryall	WC-25	Radio Panel
WC-11	Panel	WC-26	Carryall
WC-12	Closed Cab—Pickup	WC-27	Ambulance
WC-13	Open Cab—Pickup	WC-40	Closed Cab—Pickup
WC-14	Closed Cab—Pickup	WC-41	Closed Cab—No Body
WC-15	Command Reconnaissance	WC-42	Radio Panel
WC-16	Radio Panel	WC-43	Telephone Installation

built by the

CHRYSLER CORPORATION
Dodge Division • Detroit, Michigan

MAINTENANCE MANUAL FOR UNITED STATES ARMY DODGE 4 x 4 TRUCKS

FOREWORD

TWO objectives have been considered in the preparation of this manual.

- 1. OPERATION AND CARE OF THE TRUCK:** The manual contains practical and useful operating instructions and maintenance suggestions for the guidance of DRIVERS responsible for the operation of Dodge 4 x 4 Army Trucks. This information is written with the aim of promoting uninterrupted truck performance under different driving conditions encountered in Army Maneuvers.
- 2. REPAIRING THE TRUCK:** The manual contains practical and workable mechanical instructions adequately illustrated with "action" pictures and "exploded" views. This information is for the use of the MECHANIC whose responsibility is to keep the truck in operation. The "Service Diagnosis" charts will also help the mechanic to analyze his problems before attempting a solution.

The contents of the manual are arranged in group sequence as indicated in the index in the right-hand margin of this page. Each group is divided into "Subjects" or Service Operations which are numbered consecutively throughout the manual. These subject numbers are used in order to make quick reference to related subjects. For example, in the Front Axle group, Subject 32, on page 18, refers to several other subjects which are related to the procedure of removing and installing a front axle housing.

The last group of the manual entitled "Service Standards" is a tabulated summary of adjustment specifications, dimensions of parts and name and type of units built by other manufacturers.

Special service tools mentioned throughout the manual are obtainable from the Miller Tool & Manufacturing Company, Detroit, Michigan.

The "TM" number assigned to this manual appears on a Maintenance Number Plate attached to the compartment door on the instrument panel. See 2, Fig. 1. The Maintenance Number Plate also contains a number for the Parts List so that both the Maintenance Manual and the Parts List, applicable to the truck being serviced, can be easily identified by referring to the Maintenance Number Plate.

Dodge 4 x 4 Army Trucks are manufactured by the

CHRYSLER CORPORATION

Dodge Division

DETROIT, MICHIGAN

D-18502

INDEX	
Group	Page
Operating Instructions	3
Lubrication	9
Axle—Front	15
Axle—Rear, and Differential Carrier Assemblies	39
Brakes	53
Clutch	65
Cooling System	71
Electrical System	79
Engine	119
Frame, Springs and Shock Absorbers	139
Fuel and Exhaust	145
Steering Gear	157
Transmission, Transfer Case, Winch and Universal Joints	163
Wheels and Tires	176
Body and Sheet Metal	179
Service Standards	185

PREFACE

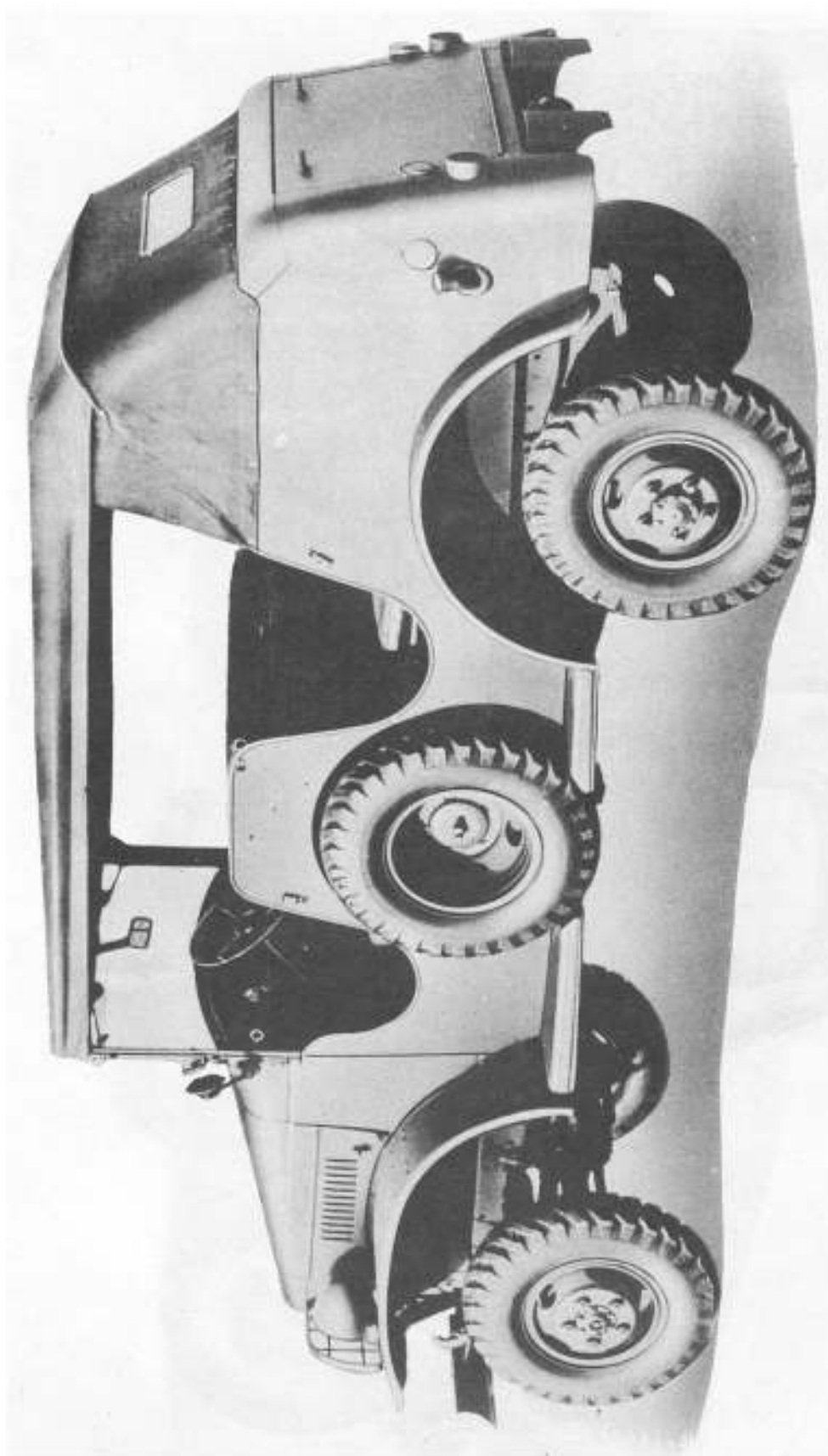
This manual contains operation and maintenance information for all 1/2-ton 4x4 WC-series trucks manufactured by the Dodge Division of the Chrysler Corporation. It is a reproduction of an original manual to which has been added information from other sources. We believe that it is the most complete manual available for these trucks because the original manual contained updated information not found in earlier publications and because the supplemental information can be of additional service to Dodge owners.

In keeping with Industrial Products' tradition of high quality, this manual utilizes page and cover stocks that closely duplicate the basis weight (thickness) and color of the original manuals. The original type of "Perfect" binding is also used. These factors, combined with the information described above, give the reader a valuable reference work at a reasonable price.

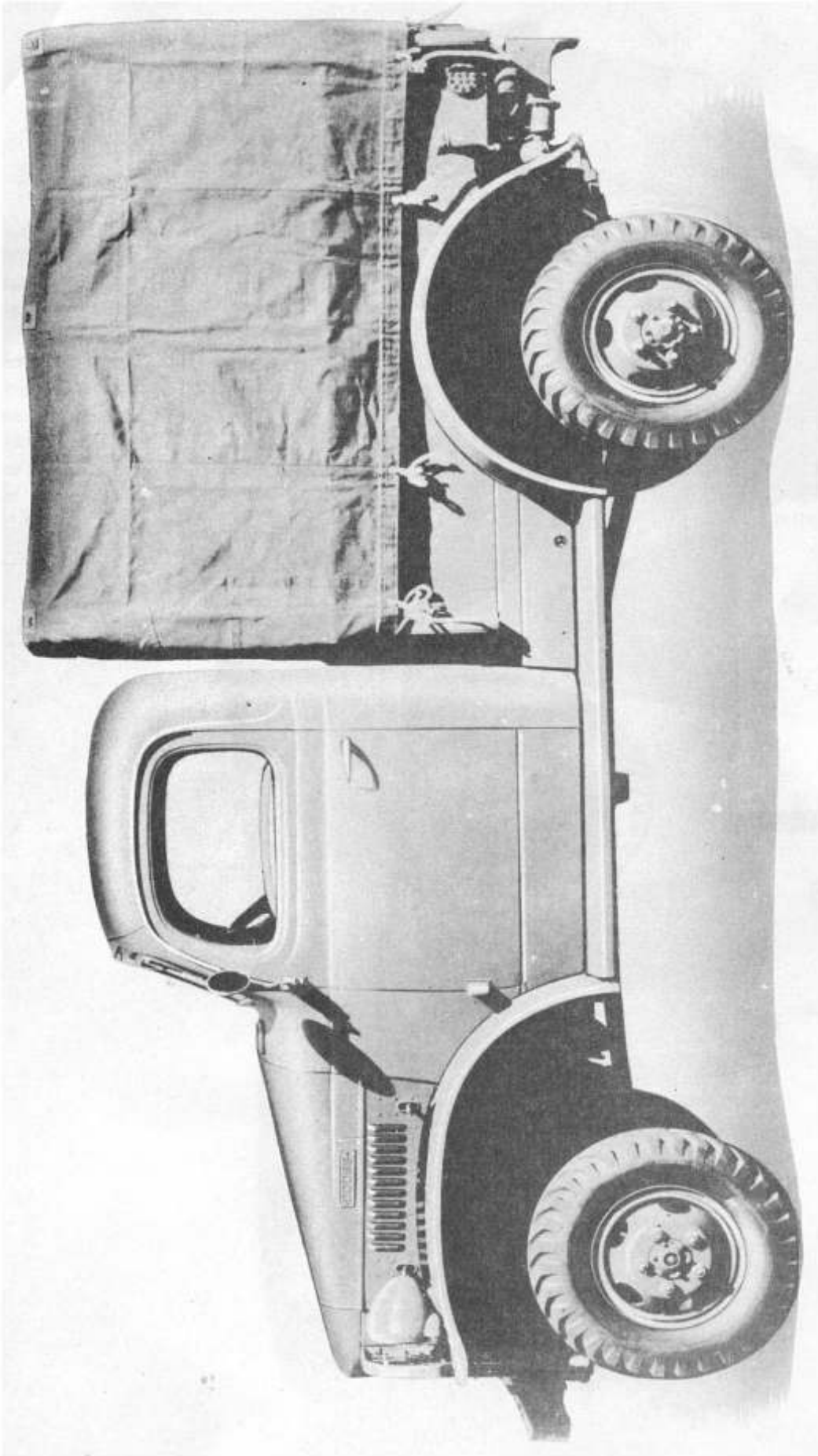
Industrial Products Company also has other publications available for Dodge 4x4 vehicles, both military and civilian. We invite your inquiries.

Industrial Products Company
P. O. Box 2144
Toluca Lake, CA 91602
U.S.A.

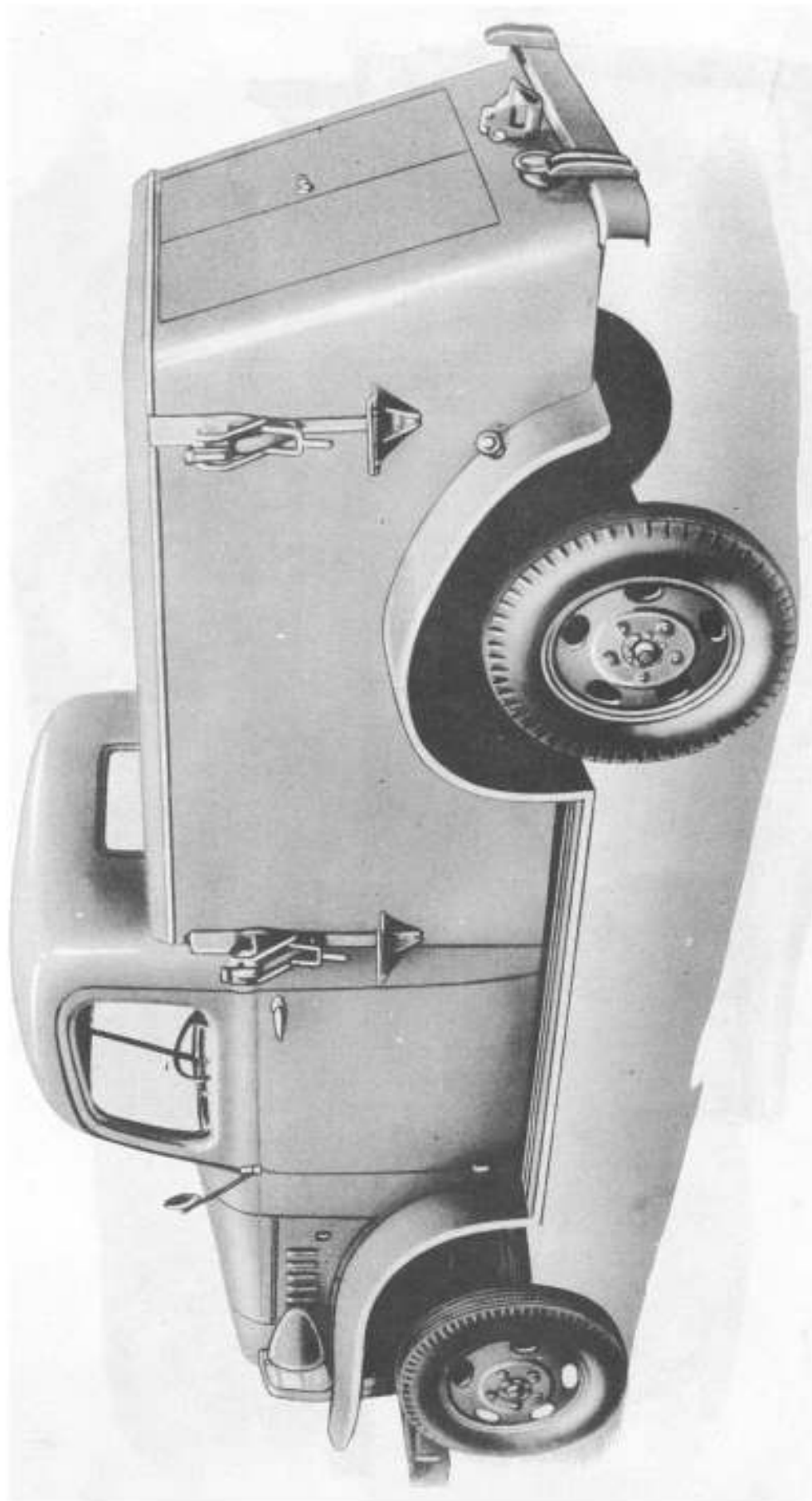
THIRD PRINTING
January, 1985



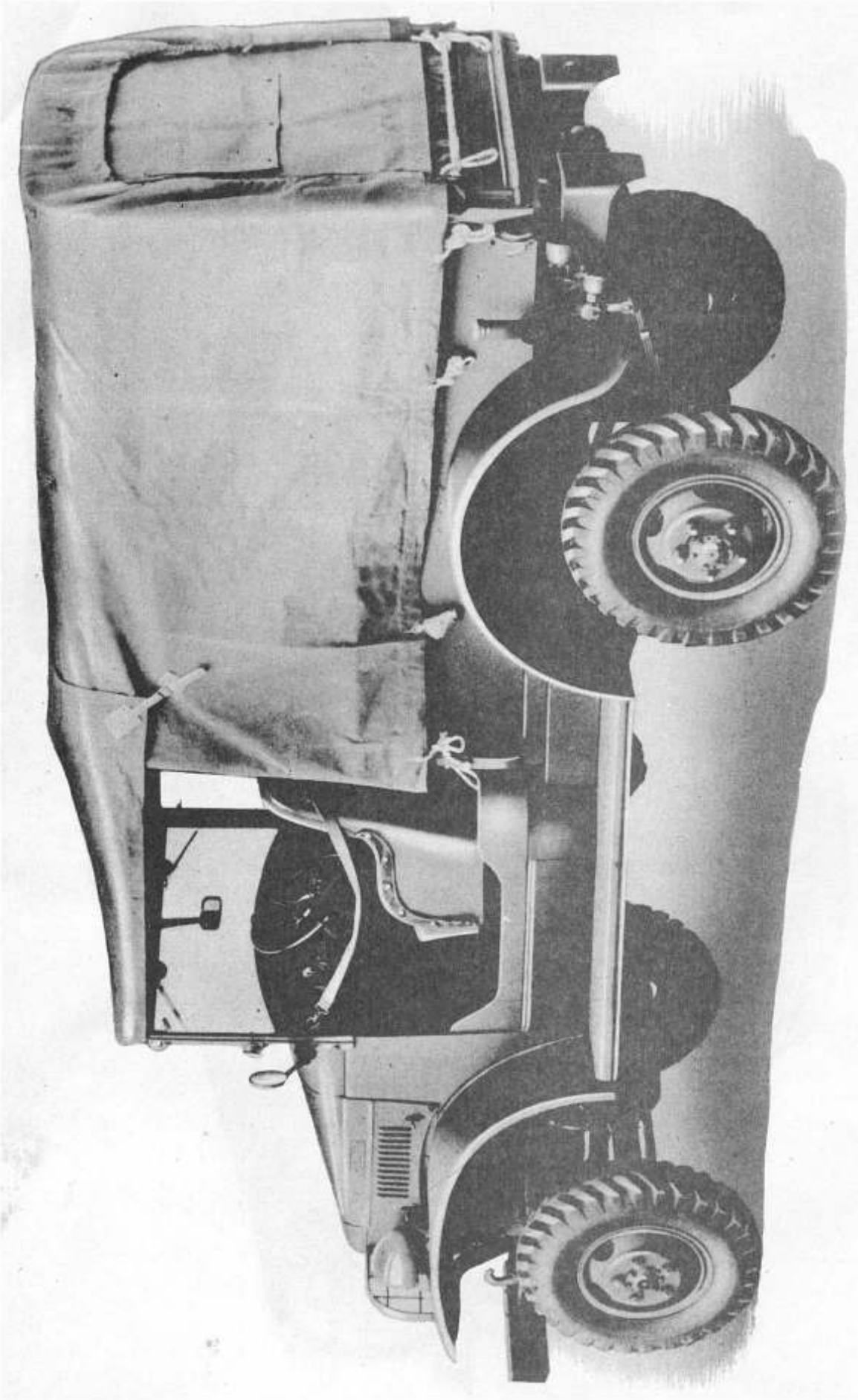
T207, T211 AND T215 COMMAND RECONNAISSANCE—LEFT REAR THREE-QUARTER VIEW



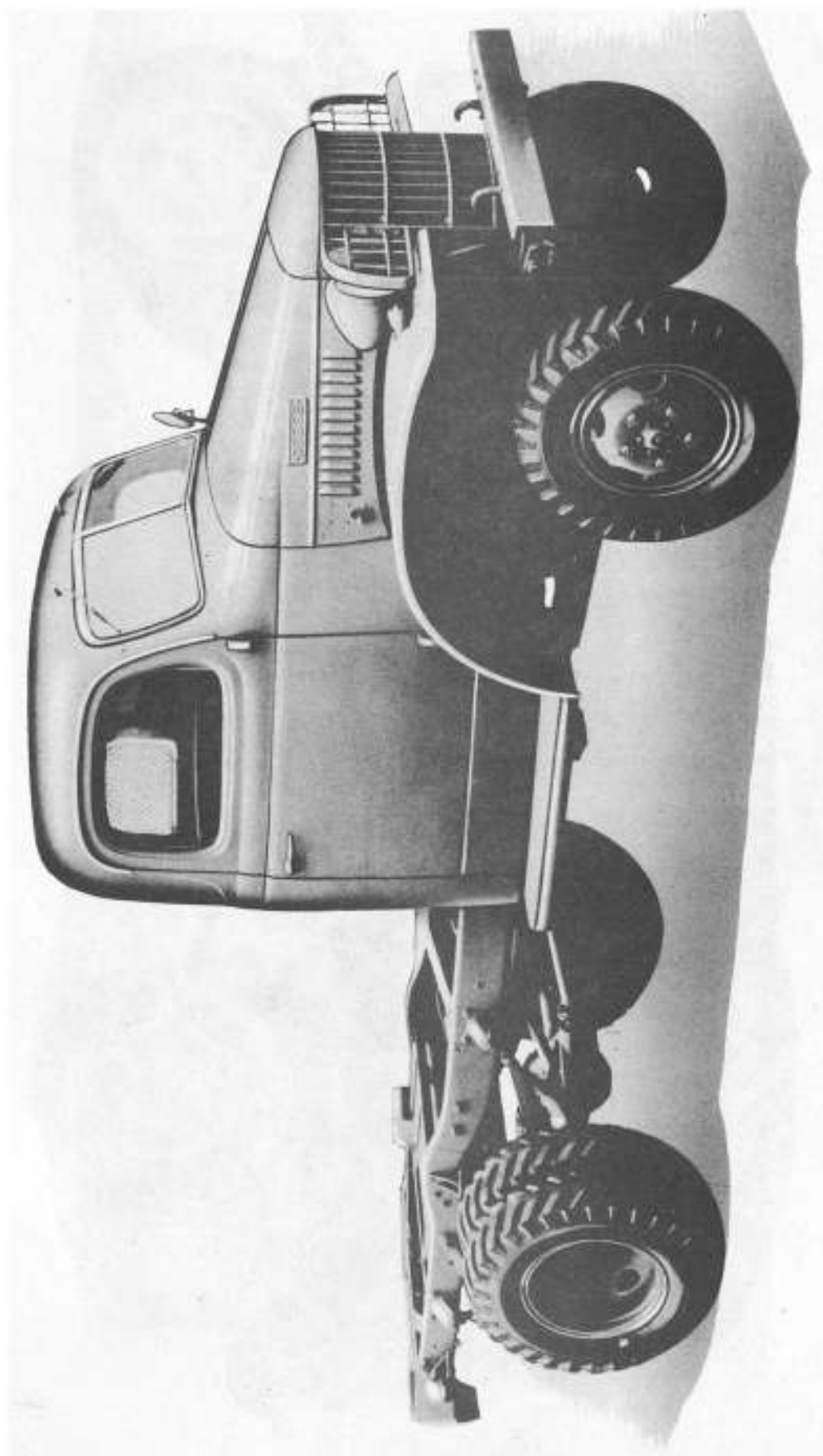
T207, T211 AND T215 CLOSED CAB W/EXPRESS OR PICK-UP BODY—LEFT SIDE VIEW



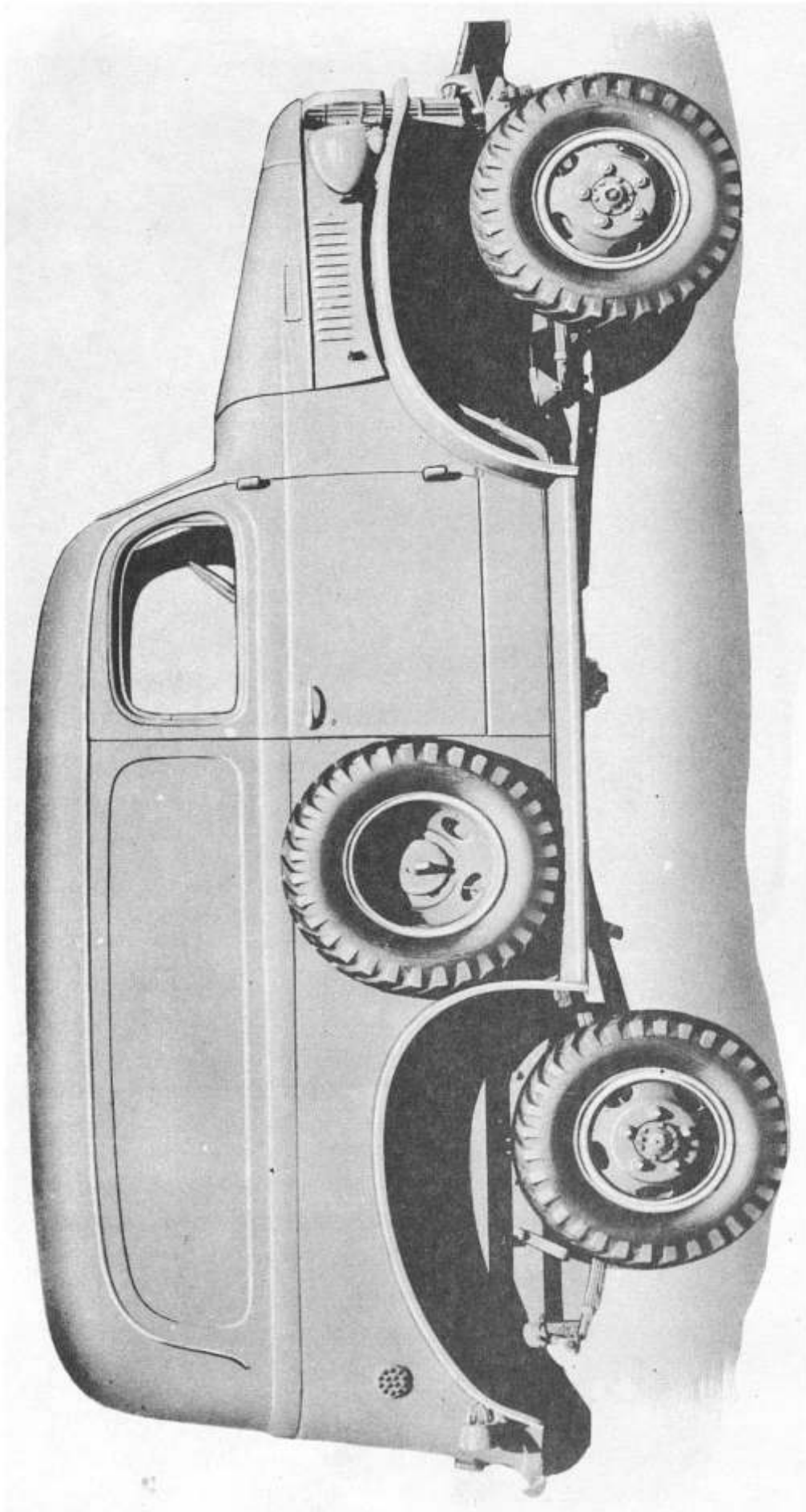
T215 TELEPHONE BODY—LEFT REAR THREE-QUARTER VIEW



T207, T211 AND T215—OPEN CAB W/PICK-UP BODY—LEFT REAR THREE-QUARTER VIEW



T211 AND T215 CLOSED CAB W/O BODY—RIGHT FRONT THREE-QUARTER VIEW



T207, T211 AND T215 PANEL BODY—RIGHT SIDE VIEW