

# PARTS LIST

3/4 Ton 4 x 4

## DODGE TRUCK

Built for

## UNITED STATES ARMY

### MODEL NUMBERS

WC-51	WC-56
WC-52	WC-57
WC-53	WC-58
WC-54	

### CONTRACT NUMBERS

W-398-QM-11420  
W-398-QM-11422

#### U. S. A. REGISTRATION NUMBERS CONTRACT W-398-QM-11420

252,293 to 254,792 Incl.	2,072,128 to 2,073,327 Incl.
245,645 to 246,394 Incl.	77,841 to 78,590 Incl.

#### U. S. A. REGISTRATION NUMBERS CONTRACT W-398-QM-11422

20,163,146 to 20,167,956 Incl.	710,000 to 718,695 Incl.
259,105 to 288,212 Incl.	20,167,957 to 20,182,608 Incl.
289,213 to 211,084 Incl.	20,184,953 to 20,185,809 Incl.
78,691 to 78,399 Incl.	20,182,609 to 20,184,512 Incl.

### FARGO MOTOR CORPORATION

Subsidiary of CHRYSLER CORPORATION

DETROIT, MICHIGAN

**TM 10-1530**  
**WAR DEPARTMENT**

WASHINGTON, MARCH 26, 1942

TM 10-1530, Parts List, Truck,  $\frac{3}{4}$  Ton, 4x4.  
Dodge (Model WC51, WC52, WC53, WC54, WC56, WC57, WC58)

Published by the Fargo Motor Corporation, Subsidiary of Chrysler Corporation  
is furnished for the information and guidance of all concerned.

AG 062.11 (4/26/41) PC (C) June 10, 1941

By Order of the Secretary of War:  
**G. C. MARSHALL**

Chief of Staff

Official:

**J. A. ULIO,**  
Major General,  
The Adjutant General.

# DODGE TRUCK

## PARTS LIST

May 25, 1942

### 3/4 TON MODEL

Model	Type of Vehicle	U. S. Registration Nos.	
CONTRACT NUMBER W-398-QM-11420			
WC-51	Weapon Carrier	252,293 to	254,792 Incl.
WC-52	Weapon Carrier with winch	245,845 to	246,394 Incl.
WC-53	Carryall	2,072,128 to	2,073,327 Incl.
WC-54	Ambulance	77,841 to	78,690 Incl.
CONTRACT NUMBER W-398-QM-11422			
WC-51	Weapon Carrier	259,135 to	289,212 Incl.
WC-52	Weapon Carrier with winch	289,213 to	291,384 Incl.
WC-53	Carryall	20,163,146 to	20,167,956 Incl.
WC-54	Ambulance	78,691 to	79,999 Incl. & 710,000 to 718,635 Incl.
WC-56	Reconnaissance	20,167,957 to	20,182,608 Incl.
WC-57	Reconnaissance with winch	20,184,953 to	20,185,868 Incl.
WC-58	Radio	20,182,609 to	20,184,952 Incl.

ENGINEERS' SYMBOL T214  
 WHEELBASE 98" - 114" and 121"  
 CYLINDERS 6  
 STARTING SERIAL NO. 81,534,381

Group 01	Engine
Group 02	Clutch
Group 03	Fuel
Group 04	Exhaust
Group 05	Cooling
Group 06	Electrical
Group 07	Transmission
Group 08	Transfer Case
Group 09	Propeller Shaft
Group 10	Front Axle
Group 11	Rear Axle
Group 12	Brake
Group 13	Wheels, Hubs & Drums
Group 14	Steering
Group 15	Frame and Brackets
Group 16	Springs & Shock Absorbers
Group 17	Front Fender & Sheet Metal
Group 18	Body
Group 19	Winch
Group 20	Power Take-Off
Group 21	Bumpers and Guards
Group 22	Miscellaneous Body-Chassis
Group 23	General Utilities and Standard Equipment
Group 24	Bearing
Group 25	Special Tools, Dies, Molds & Patterns

## Instructions for Ordering Prime or Painted Sheet Metal Parts

Sheet metal parts which are indicated as "white" should be painted locally.

When local painting facilities are not available, prime or painted sheet metal parts may be ordered from Chrysler Corporation, Parts Division as follows:

To order primed parts specify "white" part number and in the description column on the parts order enter the "Prime Operation."

To order painted parts specify "white" part number and in the description column on the parts order enter the following: "Prime, Paint and Packing Operation." Also specify truck serial number.

### PRIME FINISH AND SPECIAL PACKING OPERATIONS

Part No. Prime Operation	Description	Additional Net Price For Operation
830006	Front Fenders and Hood Top Panels .....	\$1.50
830007	Rear Fenders, Radiator Shells and Hood Halves .....	1.25
830010	Rear Wheel Shields (Per Shield), Radiator Air Scoop Pan, Radiator Grilles, Radiator Shell Panels, Running Boards, Running Board Splash Guards, Hood Side Panels, Body to Frame Splash Shields, Body Side Shields, Body to Rear Fender Splash Shields, Front Fender Splash Shield Assemblies, Fender Lower Grilles, Rear Bumper Stone Deflectors, Front Bumper Shields, Front Bumper End Plate.....	1.00

### PRIME, PAINT AND SPECIAL PACKING OPERATIONS

Part No. Paint Operation	Description	Additional Net Price For Operation
830008	Front Fenders, Deck and Luggage Compartment Lids and Hood Top Panels.....	\$4.75
830009	Rear Fenders, Radiator Shells and Hood Halves .....	3.50
830011	Rear Wheel Shields (Per Shield), Wheels, Radiator Air Scoop Pan, Radiator Grilles, Radiator Shell Panels, Running Boards, Running Board Splash Guards, Hood Side Panels, Body to Frame Splash Shields, Body Side Shields, Body to Rear Fender Splash Shields, Front Fender Splash Shield Assemblies, Fender Lower Grilles, Rear Bumper Stone Deflectors, Front Bumper Shields, Front Bumper End Plate.....	2.00
831004	Doors .....	5.00
Note:	Cab or Cab Shell (Painted).....	17.50
	Cab or Cab Shell (Crating Operation).....	7.50

The above net charges, not subject to discount, will be added to the net price of the part when a finish other than white is desired.

Prices and specifications subject to change without notice.

## INFORMATION

The information consolidated into this Parts List includes the following:

Manufacturer's part number

Part name

Vendors name and part number (where applicable)

Model application

Quantity used per vehicle

List prices

Special notes necessary for proper identification

Class "A" parts are indicated by "▼"

Parts not peculiar to government vehicles are indicated by "■". Parts thus indicated will be those that are used on commercial as well as government vehicles.

Part numbers preceded by ⊗ indicate the price is U. S. Government net.

## ARRANGEMENT

Each major group is divided into sub-groups which are numbered. The first (2) numbers used in the sub groups are the same as the numbers of their respective major groups. For example group 01 is engine, the sub groups under Engine are numbered 01-1, 01-2, 01-3, etc.

Attaching parts such as Bolt, Nuts, Studs, Washers, etc., can easily be identified as they follow the part or parts with which they are used and are shown indented from the margin.

## ILLUSTRATIONS

The illustrations included in this parts list show the construction of the various assemblies. The exploded type illustrations show the parts disassembled in their relative positions. Illustrations are shown at the beginning of each major group. The correct names for parts illustrated are shown below or on the back of the illustration and are keyed to the illustration by reference numbers. Immediately following the part names will be found the part number or numbers of the parts illustrated. Where two or more part numbers are shown opposite any one part name, it will be necessary to refer to text or listing in parts list for correct model information. The number of the sub-group, in which these parts are listed, is shown immediately following the part number. An index of illustration plate numbers will be found immediately preceding the alphabetical index.

## PAGE NUMBERING

To facilitate locating parts, all pages are numbered in consecutive order by major groups, the page number showing first the major group number followed by the number of the page in the group — For example:

Pages 09-3, 09-4, indicate: group 09, page 3; group 09, page 4.

## ALPHABETICAL INDEX

Located in front of book

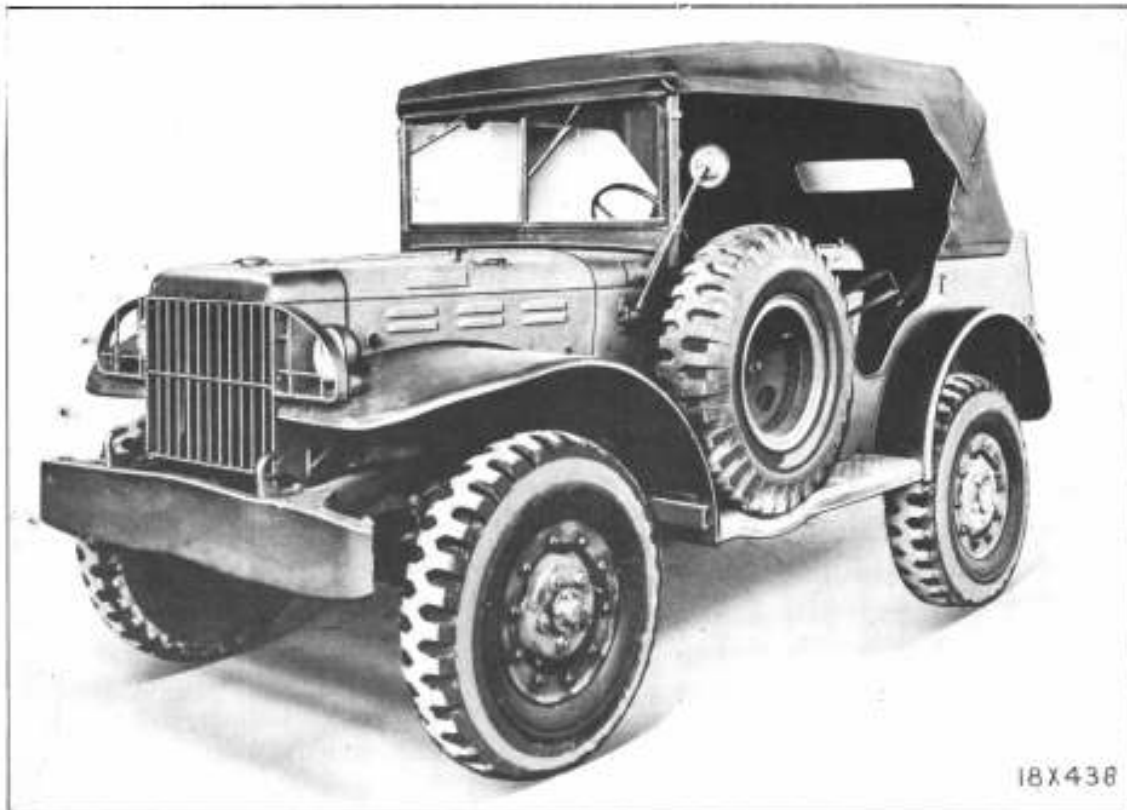
Quick reference to any part by name is provided in the alphabetical index. This index shows the numbers or the sub-group in which the parts are listed.

## NUMERICAL INDEX

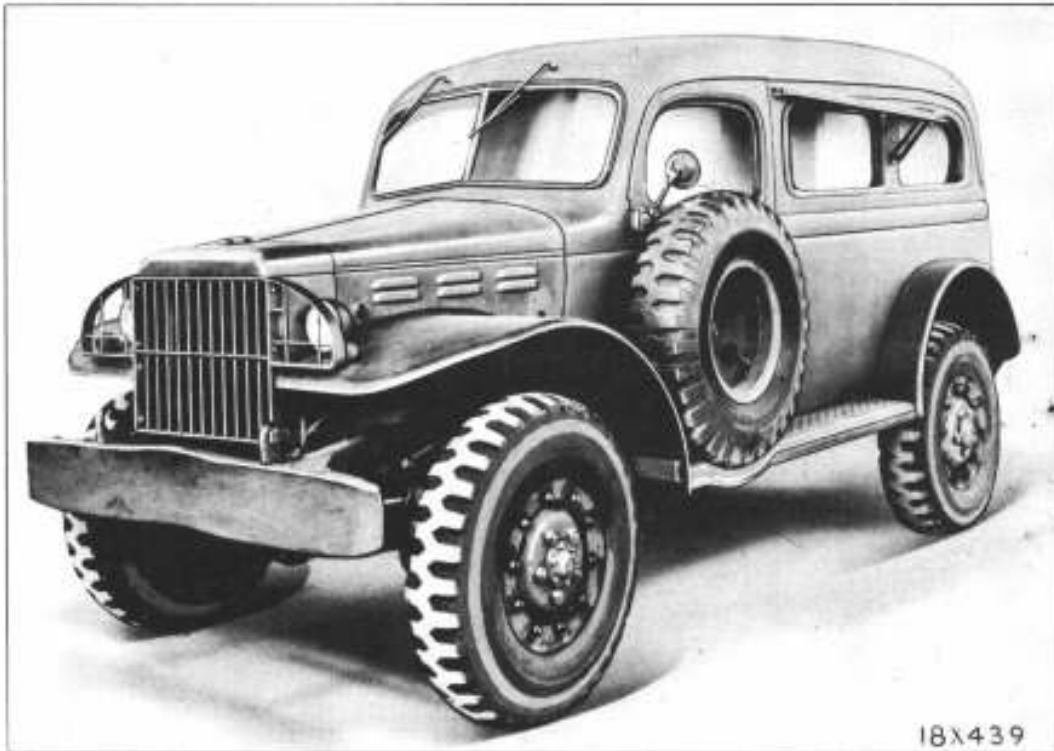
Located in back of book

Reference to any part number is provided in the numerical index. This index lists all parts in numerical sequence and shows the sub-group in which each part is listed also list price.

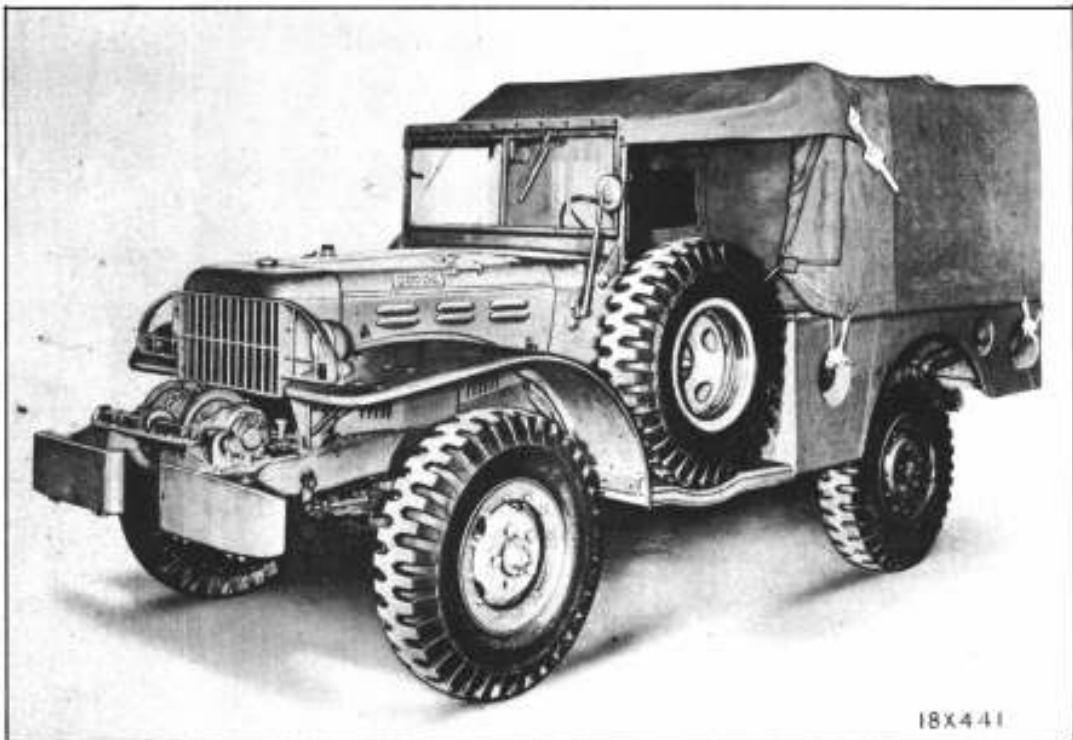
**RECONNAISSANCE**  
**RECONNAISSANCE - RADIO**



CARRY ALL



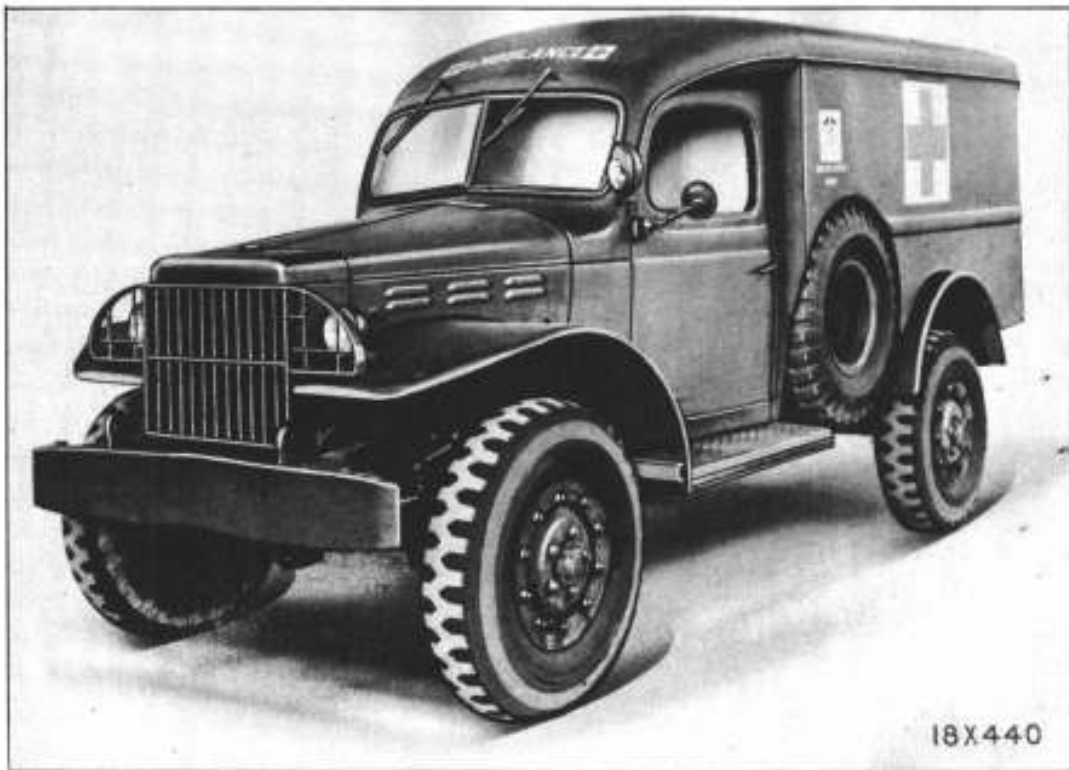
**BUCKET SEAT - WEAPON CARRIER**



18X441



AMBULANCE



## MAJOR GROUP and SUB GROUP INDEX

Group No.	NAME	Page No.	Group No.	NAME	Page No.
	ENGINE.....	01-1		0608 Blackout Parking Lamp and Switch... Tail and Signal Lamp (Blackout Type).....	06-19
0100	Engine Assembly.....	01-4		Dome Lamp (Carry-All).....	06-20
0101	Cylinder Block, Head and Water Connections.....	01-5	0609	Horn.....	06-20
0102	Crankshaft, Bearing and Caps.....	01-6	0610	Battery Cables and Connections.....	06-21
0103	Pistons and Rings.....	01-7	07	TRANSMISSION.....	07-1
	Piston Expander.....	01-8	0700	Transmission (4 Speed).....	07-4
	Piston Pin.....	01-8	0701	Transmission Case.....	07-4
0104	Connecting Rods.....	01-8	0703	Transmission Main Drive Pinion and Bearings.....	07-4
0105	Valve and Valve Tappets.....	01-9	0704	Transmission Mainshaft, Countershaft, Reverse Idler Gearshaft and Gears.....	07-4
0106	Camshaft, Gears and Sprockets, Chain Case and Chain Case Cover..	01-10	0705	Speedometer Gears.....	07-5
0107	Oil Pump Assembly (Filter and Parts).....	01-13	0706	Gearshift.....	07-5
	Oil Pressure Relief Valve.....	01-13	08	TRANSFER CASE	
	Oil Strainer.....	01-13	0800	Transfer Case Assembly.....	08-4
	Oil Pan.....	01-14	0801	Transfer Case.....	08-4
	Oil Gauge Tube.....	01-14	0802	Transfer Case Drive Gear and Shaft and Bearings.....	08-4
	Breather Pipe - Crankcase Ventilator and Oil Level Indicator.....	01-15	0803	Transfer Case Driven Gear and Shaft and Bearings.....	08-4
0108	Manifold.....	01-16	0804	Transfer Case Idler Gear and Shaft and Bearings.....	08-5
0109	Flywheel and Ring Gear.....	01-16	0806	Transfer Case Shift Forks and Rails and Shift Lever.....	08-5
0110	Engine Support.....	01-16	0808	Transfer Case Mounting Parts.....	08-5
02	CLUTCH.....	02-1	09	PROPELLER SHAFT AND UNIVERSAL JOINT.....	09-1
0201	Clutch Disc.....	02-4	0901	Propeller Shaft.....	09-3
0202	Clutch Cover, Pressure Plate and Springs.....	02-4		Propeller Shaft Companion Flange (or Yoke).....	09-3
0203	Clutch Release Lever and Eye Bolt..	02-4	0902	Universal Joint.....	----
	Clutch Release Bearing.....	02-4	10	FRONT AXLE.....	10-1
	Clutch Release Fork.....	02-4	1000	Front Axle.....	10-3
0204	Clutch Pedal.....	02-5	1001	Front Axle Housing.....	10-3
0207	Clutch Housing.....	02-5	1002	Differential.....	10-3
03	FUEL SYSTEM.....	03-1	1003	Drive Gear, Pinion and Pinion Bearings.....	10-4
0301	Carburetor.....	03-4		Drive Pinion.....	10-4
0302	Fuel Pump.....	03-6		Drive Pinion Bearings.....	10-4
0303	Accelerator and Throttle Control...	03-8	1005	Universal Drive.....	10-4
0304	Fuel Tank.....	03-10		Drive Flange.....	10-5
04	EXHAUST		1006	Steering Knuckle Flange and Arm...	10-5
0401	Muffler.....	04-1	11	AXLE - REAR.....	11-1
0402	Exhaust Pipe.....	04-2	1100	Rear Axle.....	11-3
	Muffler Tail Pipe.....	04-2	1101	Rear Axle Housing.....	11-3
05	COOLING.....	05-1	1102	Drive Shaft.....	11-3
0501	Radiator Shell.....	05-2	1103	Differential Case and Carrier Assembly and Bearings.....	11-3
0502	Thermostat and Thermometer.....	05-3	1104	Drive Gear and Pinion and Bearings.....	11-4
0503	Water Pump.....	05-3	12	BRAKES.....	----
	Fan, Belt and Pulleys.....	05-4	1201	Hand Brake Lever.....	12-6
0504	Radiator Mounting.....	05-5		Hand Brake Operating Links, Levers and Rods.....	12-6
0505	Engine Water Fittings and Hose.....	----		Hand Brake Drum.....	12-6
06	ELECTRICAL.....	06-1		Hand Brake Support.....	12-6
0601	Generator (Except Carry-All and Reconnaissance) (6 Volt).....	06-6		Hand Brake Band.....	12-7
	Generator (Carry-All and Reconnaissance) (12 Volt).....	06-7		Hand Brake Adjusting Parts.....	12-7
0602	Starting Motor (Except Carry-All and Reconnaissance) (6 Volt).....	06-9	1202	Brake Shoes.....	12-7
	Starting Motor (Carry-All and Reconnaissance) (12 Volt).....	06-11	1203	Brake Support.....	12-7
0603	Distributor.....	06-12		Brake Shoe Anchor.....	12-7
0604	Ignition Coil and Wiring and Ignition Switch.....	06-13		Brake Shoe Adjuster.....	12-8
0605	Instrument Lamp.....	06-15		Brake Shoe Guide.....	12-8
	Ammeter.....	06-15	1204	Brake Pedal.....	12-8
	Voltmeter (Reconnaissance and Carry-All).....	06-15	1205	Hydraulic Master Cylinder.....	12-8
	Fuel Gauge.....	06-15		Hydraulic Master Cylinder Internal Parts.....	12-9
	Thermometer.....	06-15	1207	Hydraulic Wheel Cylinder.....	12-9
	Oil Gauge.....	06-16		Hydraulic Wheel Cylinder Internal Parts.....	12-10
0606	Light Switches, Cable Wiring Harness and Trailer Connector....	06-16			
1607	Headlamp.....	06-18			

Prices and specifications subject to change without notice.

■ Indicates part used on Commercial and Government vehicles.

\* Indicates amount used as required.

P.O.A.—Price on Application

▼ Indicates Class "A" Part.

© U. S. Government Agency Net.