

TM 10-1377

TO 19-75AAA-110

WAR DEPARTMENT TECHNICAL MANUAL

OPERATION AND
MAINTENANCE MANUAL
FWD TRUCK
MODEL SU-COE
5-6 TON 4x4

WAR DEPARTMENT

WASHINGTON 25, D. C., *January 29, 1942*

TM 10-1377, Maintenance Manual, Truck 5-6 Ton 4 x 4, Four-Wheel Drive (Model SU-COE) published by The Four Wheel Drive Auto Company, is furnished for the information and guidance of all concerned.

[AG 082.11 (4/26/41) PC (C) (10 Jun 41)]

BY ORDER OF THE SECRETARY OF WAR:

OFFICIAL:

E. S. ADAMS
Major General

G. C. MARSHALL
Chief of Staff

© PAPERPRINT.BE 2015

**OPERATION
AND
MAINTENANCE
MANUAL**

MODEL SU-COE

**F
W
D**

Introduction

SCOPE. This manual is the second edition of TM 10-1377. It covers serial numbers 62841 to 63191, 63441 to 63791, and 66173 to 69372. The information in this manual is for the guidance of the using arms and services. It contains a description of units, including instructions with reference to the operation, inspection, adjustments, and repair. It is grouped in a convenient and understandable manner, made up in sections which are numbered on the title page, and the sections are tabbed to correspond with the numbers on the title page.

DESCRIPTION. This FWD Model SU-COE truck is a four-wheel-drive and is powered with a six cylinder L-head type of engine. It has a conventional type of transfer case assembly with a center differential similar to the differential in the front and rear axles.

DIFFERENCES IN VEHICLES. There are two distinct types in the two series of vehicles: The first series, numbers 62841 to 63191, inclusive, and 63441 to 63791, inclusive, have a cargo body mounted. The second series, numbers 66173 to 69372, have cargo bodies mounted up to serial number 66674. The balance of the vehicles from and including serial number 66674 to 69372 are tractors, having a winch mounted back of the cab and a power brake cylinder for a trailer. There are other differences, such as the instrument panels, electrical wiring, brake piping, and trailer brake connections. The location of the instruments and controls is different between the first and second series. The illustrations of the wiring and brake diagrams indicate the serial numbers of the vehicles to avoid any confusion in making repairs.





SERIAL NUMBER	FWD	MODEL
TRUCK, 5-6 TON 4X4 GENERAL SERVICE CARGO		
PUBLICATIONS APPLYING TO THIS VEHICLE		
PARTS LIST 1/4 TO		MAINTENANCE MANUAL 1/4 TO
DATE OF DELIVERY		
WEIGHT UNLOADED		
GROSS WEIGHT		
MAXIMUM PAY LOAD		
MAXIMUM TRAILER LOAD		
MAXIMUM SPEED		
<p>CENTER DIFFERENTIAL LOCK. THIS TRUCK DRIVES ON ALL WHEELS AT ALL TIMES. THE CENTER DIFFERENTIAL LOCK IS PROVIDED TO OVERCOME WHEEL SLIPPAGE ON EITHER AXLE AND SHOULD BE ENGAGED BEFORE SLIPPAGE OCCURS. UNDER NO CONDITION SHOULD THIS LOCK BE LEFT ENGAGED WHEN THE POSSIBILITY OF SLIPPAGE NO LONGER EXISTS. SEE MAINTENANCE MANUAL FOR DETAILS.</p> <p>LUBRICATION. FOR COMPLETE SPECIFICATIONS AND CHART SEE MAINTENANCE MANUAL.</p> <p>ENGINE { DIE FOR SUMMER 20 S A I DIE FOR WINTER 30 S A I</p>		
<p>THE FOUR WHEEL DRIVE AUTO CO. CLINTONVILLE, WIS., U.S.A. — KITCHENER, ONTARIO, CANADA</p>		

Name Plate—Used on Serial No. 62841-63191 Incl. and No. 63441-63791 Incl.

SERIAL NO.	FWD	MODEL
		SU - COE
TRUCK, 5-6 TON, 4X4 GENERAL SERVICE LOAD CARRIER		
SUPPLY SERVICE MAINTAINING VEHICLE: ORDNANCE DEPARTMENT		
VEHICLE WEIGHT, UNLOADED	14,600 LBS.	
MAXIMUM PAYLOAD	{ ROAD 12,000 LBS. { CROSS COUNTRY 10,000 LBS.	
MAXIMUM GROSS WEIGHT	26,600 LBS.	
MAXIMUM TOWED LOAD	16,000 LBS.	
DATE OF DELIVERY		
PRESCRIBED BY SERVICE CONCERNED:		
OCTANE RATING OF GASOLINE:	68 - 72	
SAE GRADE OF OIL, ABOVE 32°F:	NO. 40	
SAE GRADE OF OIL, BELOW 32°F:	NO. 30	
<p>THE FOUR WHEEL DRIVE AUTO CO. CLINTONVILLE, WIS., U.S.A. — KITCHENER, ONT., CANADA</p>		

Name Plate Used on Serial No. 66173 to 69372 Incl.

Introduction

SCOPE. This manual is the second edition of TM 10-1377. It covers serial numbers 62841 to 63191, 63441 to 63791, and 66173 to 69372. The information in this manual is for the guidance of the using arms and services. It contains a description of units, including instructions with reference to the operation, inspection, adjustments, and repair. It is grouped in a convenient and understandable manner, made up in sections which are numbered on the title page, and the sections are tabbed to correspond with the numbers on the title page.

DESCRIPTION. This FWD Model SU-COE truck is a four-wheel-drive and is powered with a six cylinder L-head type of engine. It has a conventional type of transfer case assembly with a center differential similar to the differential in the front and rear axles.

DIFFERENCES IN VEHICLES. There are two distinct types in the two series of vehicles: The first series, numbers 62841 to 63191, inclusive, and 63441 to 63791, inclusive, have a cargo body mounted. The second series, numbers 66173 to 69372, have cargo bodies mounted up to serial number 66674. The balance of the vehicles from and including serial number 66674 to 69372 are tractors, having a winch mounted back of the cab and a power brake cylinder for a trailer. There are other differences, such as the instrument panels, electrical wiring, brake piping, and trailer brake connections. The location of the instruments and controls is different between the first and second series. The illustrations of the wiring and brake diagrams indicate the serial numbers of the vehicles to avoid any confusion in making repairs.



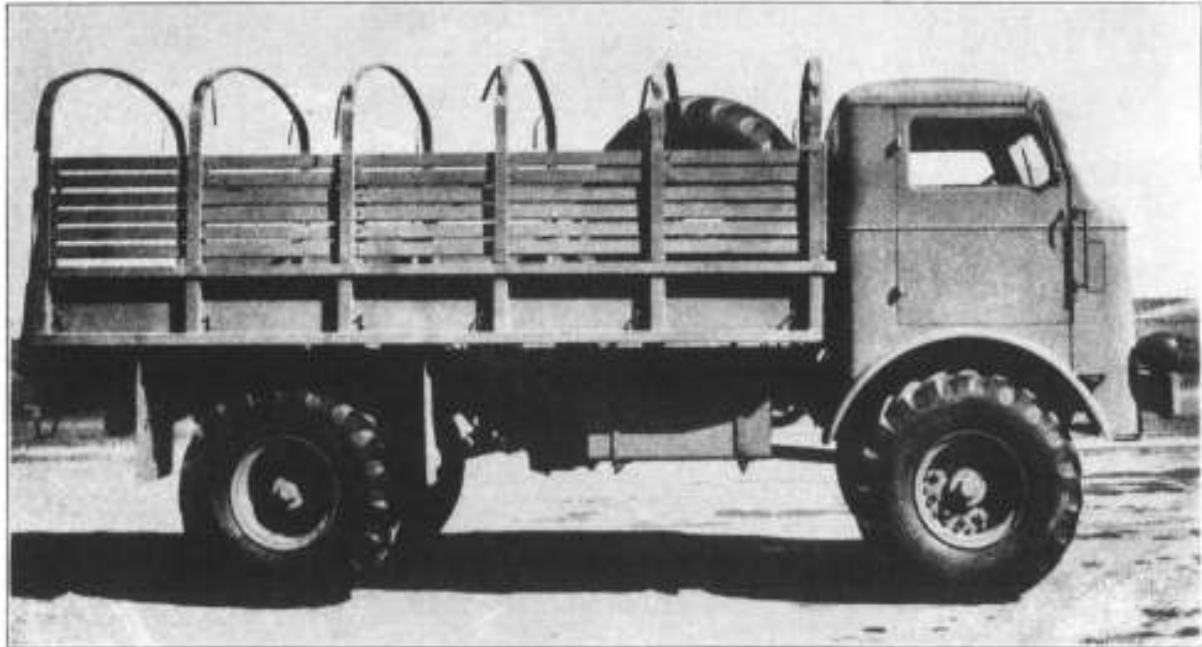


SERIAL NUMBER	FWD	MODEL
TRUCK, 5-6 TON 4X4 GENERAL SERVICE CARGO		
PUBLICATIONS APPLYING TO THIS VEHICLE		
PARTS LIST 1/4 IN	MAINTENANCE MANUAL 1/4 IN	
DATE OF DELIVERY		
WEIGHT UNLOADED		
GROSS WEIGHT		
MAXIMUM PAY LOAD		
MAXIMUM TRAILER LOAD		
MAXIMUM SPEED		
<p>CENTER DIFFERENTIAL LOCK. THIS TRUCK DRIVES ON ALL WHEELS AT ALL TIMES. THE CENTER DIFFERENTIAL LOCK IS PROVIDED TO OVERCOME WHEEL SLIPPAGE ON EITHER AXLE AND SHOULD BE ENGAGED BEFORE SLIPPAGE OCCURS. UNDER NO CONDITION SHOULD THIS LOCK BE LEFT ENGAGED WHEN THE POSSIBILITY OF SLIPPAGE NO LONGER EXISTS. SEE MAINTENANCE MANUAL FOR DETAILS.</p> <p>LUBRICATION. FOR COMPLETE SPECIFICATIONS AND CHART SEE MAINTENANCE MANUAL.</p> <p>ENGINE { OIL FOR SUMMER 20 S A 1 OIL FOR WINTER 30 S A 1</p>		
<p>THE FOUR WHEEL DRIVE AUTO CO. CLINTONVILLE, WIS., U.S.A. — KITCHENER, ONT., CANADA</p>		

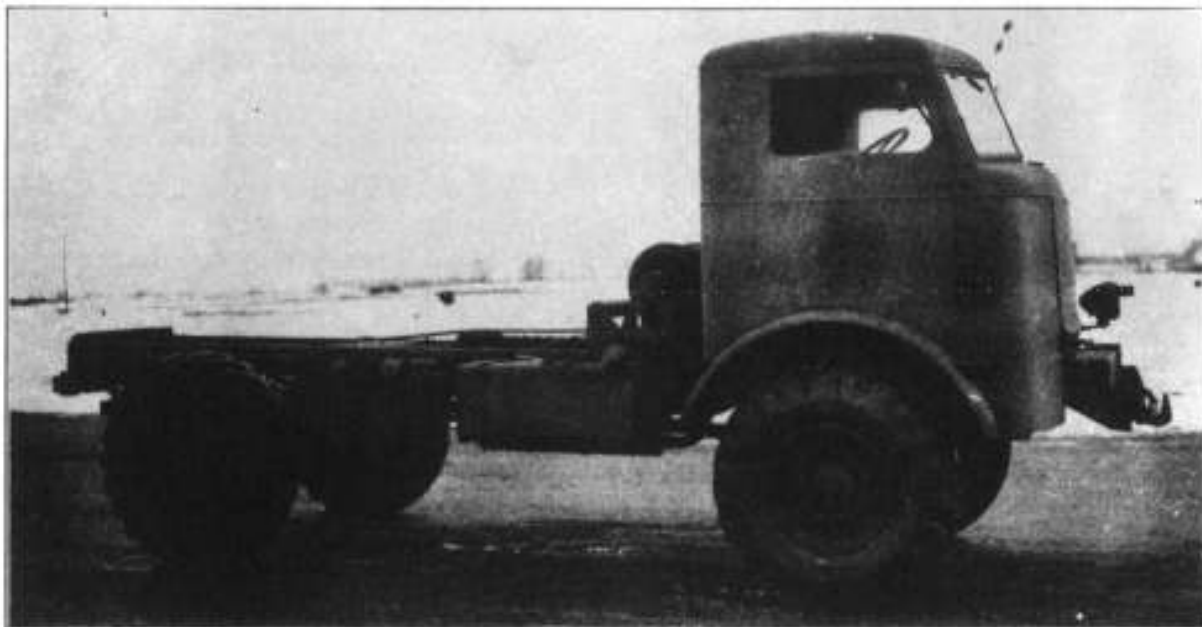
Name Plate—Used on Serial No. 62841-63191 Incl. and No. 63441-63791 Incl.

SERIAL NO.	FWD	MODEL
		SU - COE
TRUCK, 5-6 TON, 4X4 GENERAL SERVICE LOAD CARRIER		
SUPPLY SERVICE MAINTAINING VEHICLE:		
ORDNANCE DEPARTMENT		
VEHICLE WEIGHT, UNLOADED	14,600 LBS.	
MAXIMUM PAYLOAD	ROAD	12,000 LBS.
	CROSS COUNTRY	10,000 LBS.
MAXIMUM GROSS WEIGHT	26,600 LBS.	
MAXIMUM TOWED LOAD	16,000 LBS.	
DATE OF DELIVERY		
PRESCRIBED BY SERVICE CONCERNED:		
OCTANE RATING OF GASOLINE:	68 - 72	
SAE GRADE OF OIL, ABOVE 32°F:	NO. 40	
SAE GRADE OF OIL, BELOW 32°F:	NO. 30	
<p>THE FOUR WHEEL DRIVE AUTO CO. CLINTONVILLE, WIS., U.S.A. — KITCHENER, ONT., CANADA</p>		

Name Plate Used on Serial No. 66173 to 69372 Incl.



SU-COE With Cargo Body



SU-COE With Winch

FIGURE 1



GENERAL DATA

Engine:

Type.....	Waukesha SRKR
H.P. at 2250 R.P.M.....	126
Bore.....	4 5/8"
Stroke.....	5 1/8"
Cylinders.....	6

Capacities:

Fuel tanks	
L. H. tank—(34.8 Imp. Gals.).....	42 U. S. Gals.
R. H. tank—(34.8 Imp. Gals.).....	42 U. S. Gals.
Engine crankcase (refill)—(11.6 Imp. Qts.).....	14 U. S. Qts.
Cooling system (complete)—(30.7 Imp. Qts.).....	37 U. S. Qts.
Radiator (only)—(18.2 Imp. Qts.).....	22 U. S. Qts.
Transmission—(10 Imp. Qts.).....	12 U. S. Qts.
Transmission with power take-off—(11.6 Imp. Qts.).....	14 U. S. Qts.
Transfer—(7.4 Imp. Qts.).....	9 U. S. Qts.
Front axle differential—(3.3 Imp. Qts.).....	4 U. S. Qts.
Rear axle differential—(3.3 Imp. Qts.).....	4 U. S. Qts.
Oil bath air cleaner—(.8 Imp. Qts.).....	1 U. S. Qt.
Hydraulic brake assembly capacity.....	2 Qts.
Steering gear capacity.....	6.7 Pts.

Speeds (All Wheels Driving)—Ratio 8.87:1 With 14.00 x 20 Tires:

In first gear.....	3.4 Miles Per Hr.
In second gear.....	5.85 Miles Per Hr.
In third gear.....	10.8 Miles Per Hr.
In fourth gear.....	18.5 Miles Per Hr.
In fifth gear.....	34.2 Miles Per Hr.
Reverse gear.....	3.8 Miles Per Hr.
Maximum allowable speed.....	34.2 Miles Per Hr.

Dimensions and Weights:

Wheelbase.....	144"
Length, over all.....	254"
Width, over all.....	96"
Height, over all.....	119"
Lowest operable height.....	113"
Weight w body.....	14,600 lbs.
Wheel size.....	10.00 x 20
Tire size.....	14.00 x 20
Tire pressure.....	90 lbs.
Tread (front).....	72"
Tread (rear).....	72"
Approach angle.....	40° 40' degrees
Departure angle.....	33° 10' degrees
Minimum turning radius.....	62 ft.
Ground clearance—(front and rear Axles).....	14"

Towing Facilities:

Front.....	Tow Hooks
Rear.....	Pintle Hook
Front and rear.....	With Winch

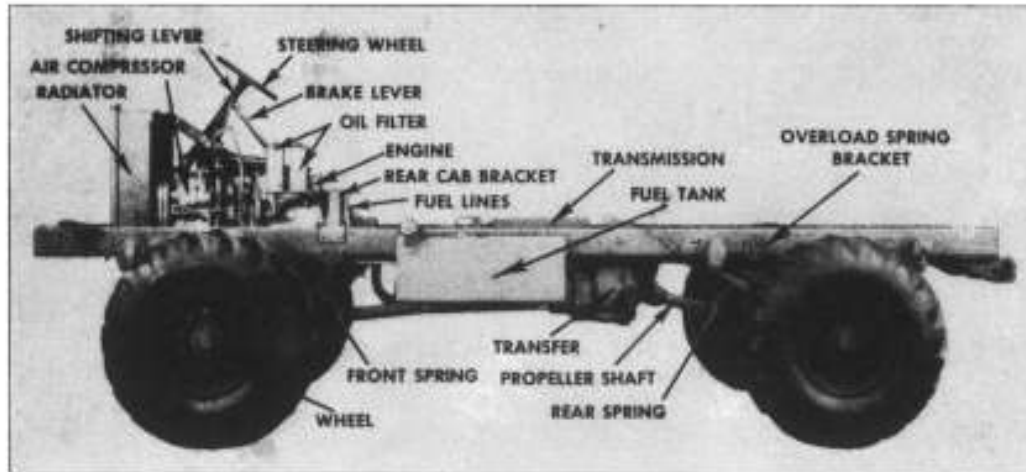


FIGURE 2—SU-COE Chassis (Less Winch)

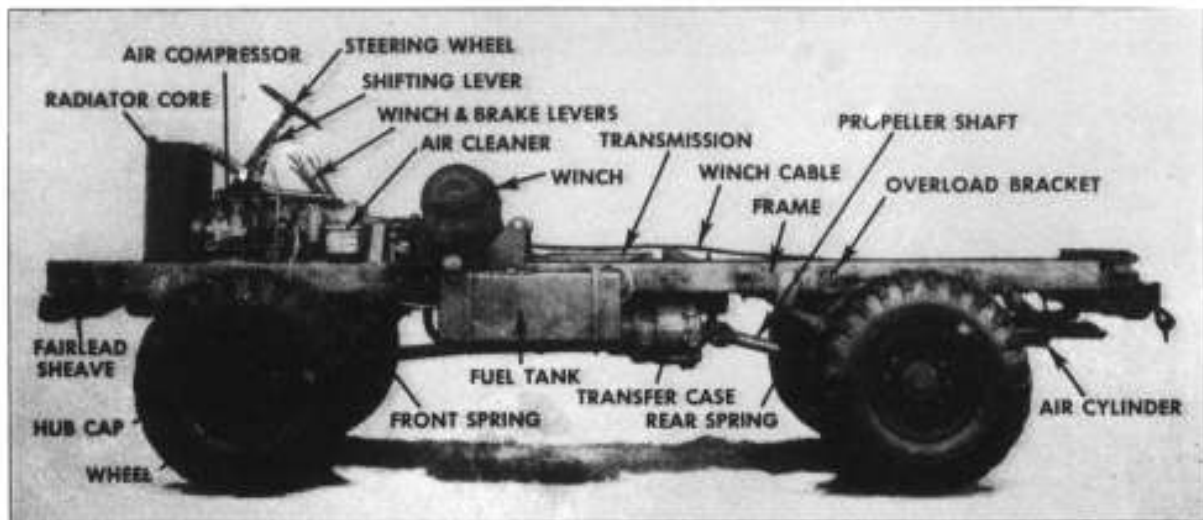


FIGURE 3—SU-COE Chassis (With Winch)