

# TM 9-224

WAR DEPARTMENT TECHNICAL MANUAL

---

## MACHINE GUN MOUNTS FOR TRUCKS



# MACHINE GUN MOUNTS FOR TRUCKS

## CONTENTS

	<b>Paragraphs</b>	<b>Pages</b>
<b>SECTION</b>		
I. Introduction .....	1- 3	2-11
II. Operation .....	4	12
III. Mounting and dismounting weapons	5- 8	13-28
IV. Disassembly and assembly.....	9-11	29- 30
V. Care and preservation.....	12-19	31-33
VI. Inspection .....	20-21	34-35
VII. Maintenance and repair.....	22-24	36-41
VIII. Painting .....	25-29	42-44
IX. References .....	30-31	45
<b>INDEX</b> .....		46- 48

**TM 9-224****1-2****MACHINE GUN MOUNTS FOR TRUCKS****Section I****INTRODUCTION**

	Paragraph
Scope .....	1
Description and characteristics .....	2
Differences among models .....	3

**1. SCOPE.**

a. This manual is published for the information and guidance of the personnel of the using arms charged with the operation and maintenance of this materiel. In addition to description, it contains information required for the identification, use, and care of the following machine gun mounts:

- (1) Truck Pedestal Mount M24.
- (2) Truck Pedestal Mount M24A1.
- (3) Truck Pedestal Mount M25.
- (4) Truck Pedestal Mount M31.
- (5) Cal. .30 Machine Gun Mount M48.
- (6) Truck Mount M32.
- (7) Truck Mount M36.
- (8) Truck Mount M37.
- (9) Truck Mount M37A1.
- (10) Truck Mount M37A2.

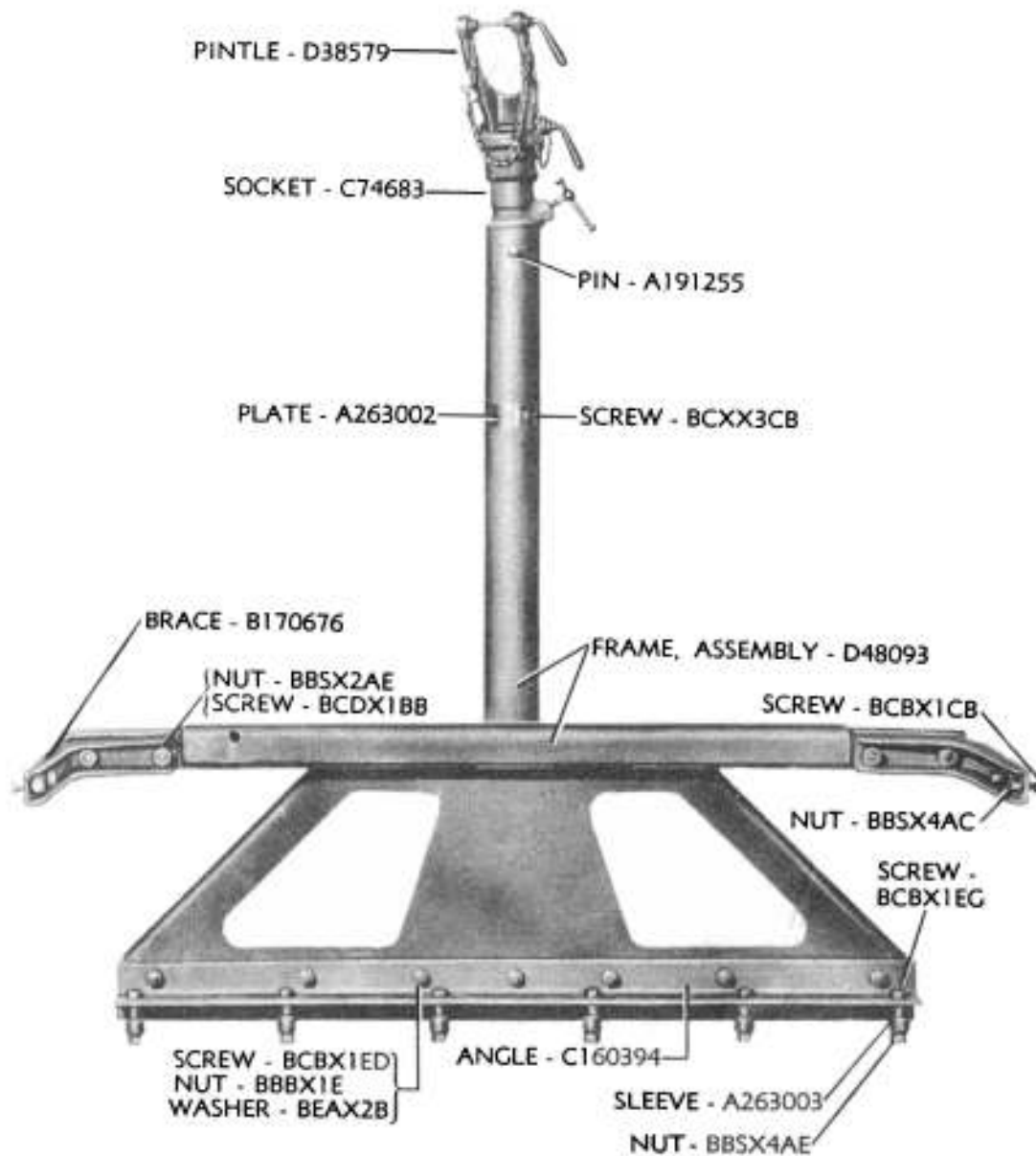
**2. DESCRIPTION AND CHARACTERISTICS.**

a. **Truck Pedestal Mounts M24A1, M24, M25, M31, and M48** (figs. 1, 2, 3, 4, and 5). Each mount consists essentially of a cradle pintle and a pedestal body. The pintle is rotatable in a socket of the pedestal body, and can be locked at any point of traverse by means of the cradle pintle clamping screw.

(1) The weapons used with these truck pedestal mounts are as follows:

- (a) Browning Machine Gun, cal. .30, M1919A4, flexible.
- (b) Browning Machine Gun, cal. .50, M2, heavy barrel, flexible.
- (c) Browning Automatic Gun, cal. .30, M1918A2.
- (d) Browning Machine Gun, cal. .30, M1917A1 with Cradle D7431 of Tripod Mount M1917A1.

## INTRODUCTION



RA PD 57901

**Figure 1—Truck Pedestal Mount M24A1**

- (2) The truck with which the mounts are used are as follows:
- (a) The M24 is used on  $\frac{1}{2}$ -ton, 4 x 4 trucks.
  - (b) The M24A1 is used with  $\frac{3}{4}$ -ton, 4 x 4 trucks.
  - (c) The M25 is used with Half-Track Personnel Carriers M3 and M5.
  - (d) The M31 is used with  $\frac{1}{4}$ -ton, 4 x 4 trucks.
  - (e) The M48 is used with  $\frac{1}{4}$ -ton, 4 x 4 trucks.

TM 9-224  
2

MACHINE GUN MOUNTS FOR TRUCKS

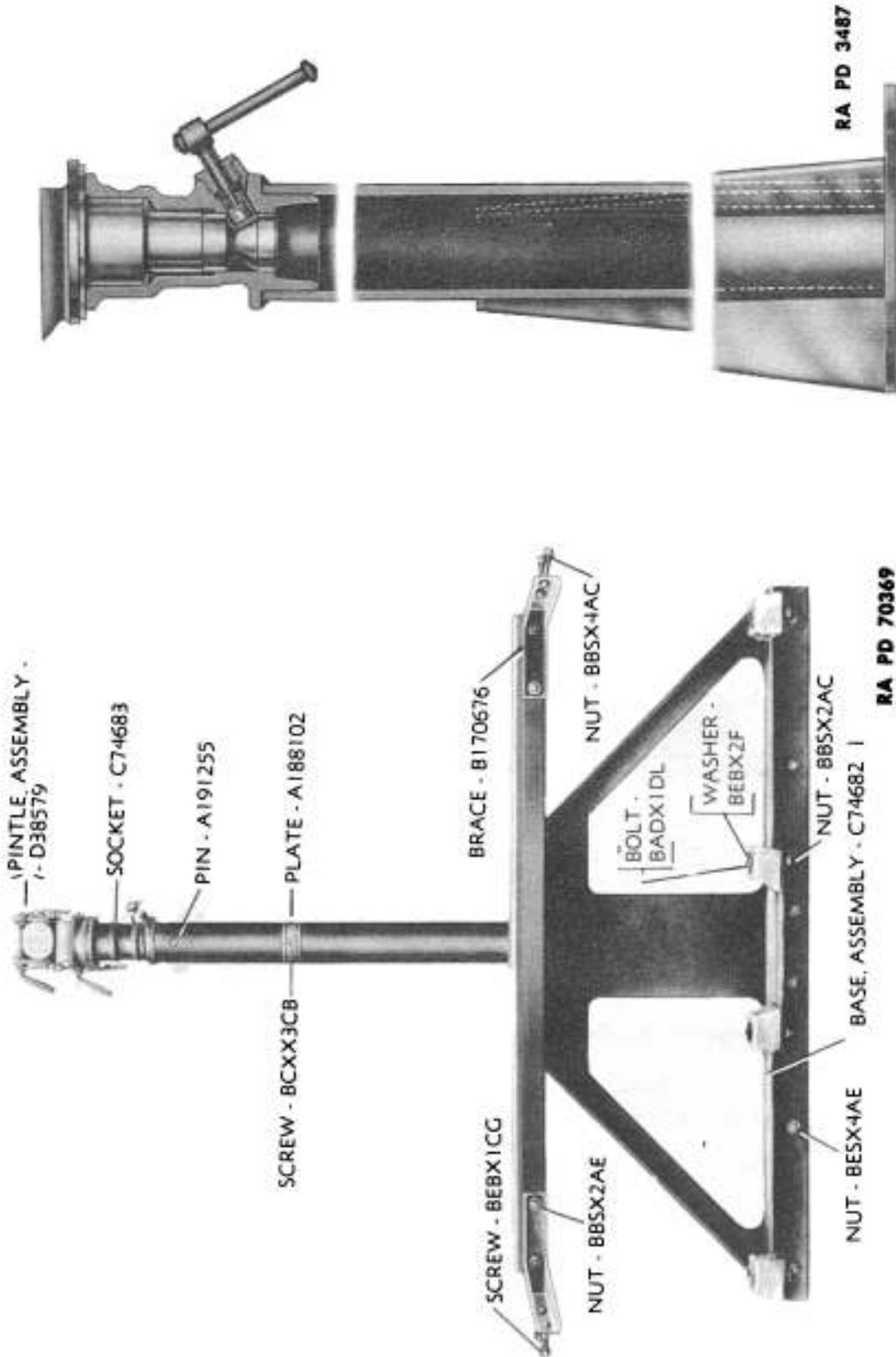


Figure 3—Truck Pedestal Mount M25

Figure 2—Truck Pedestal Mount M24

INTRODUCTION

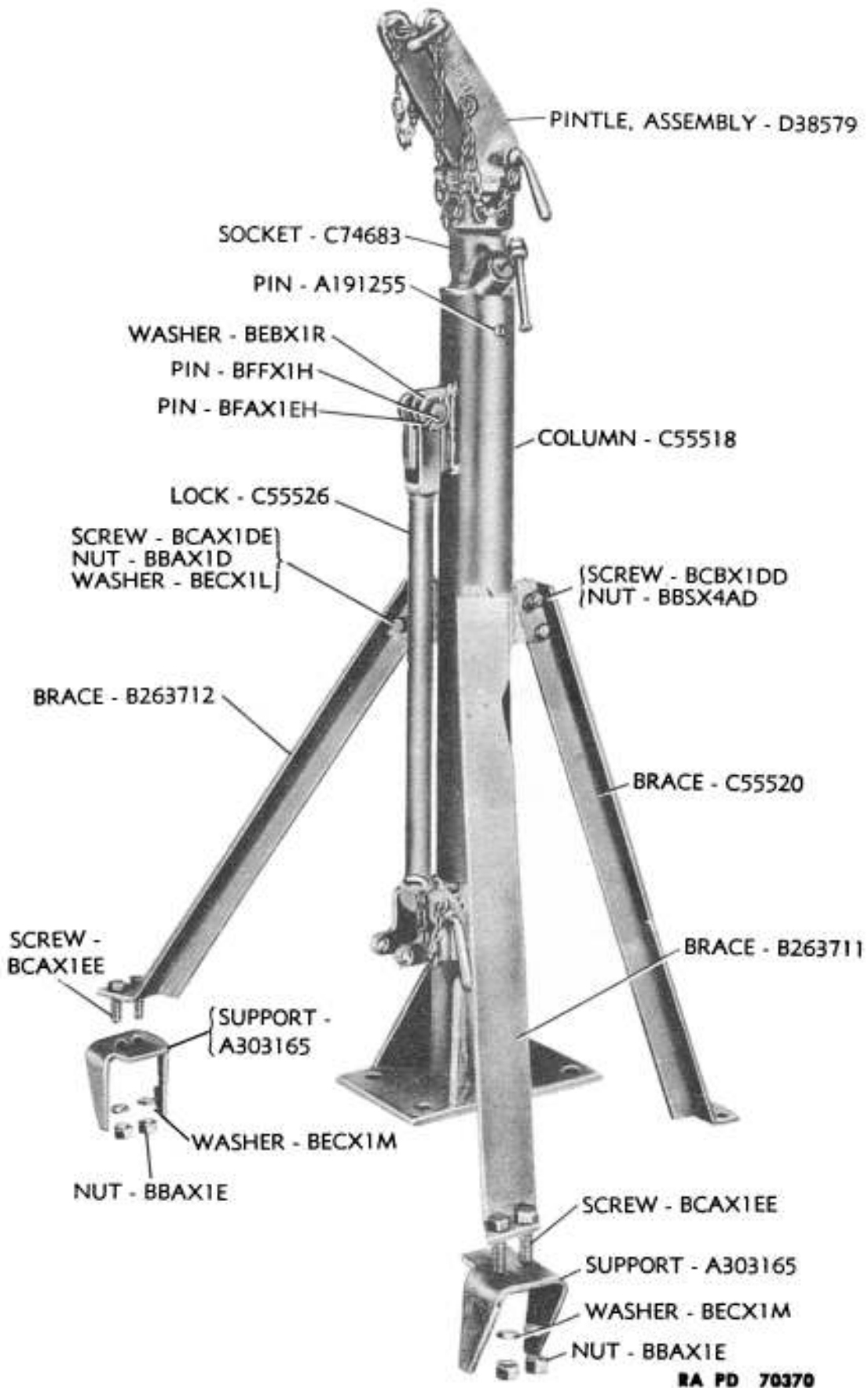
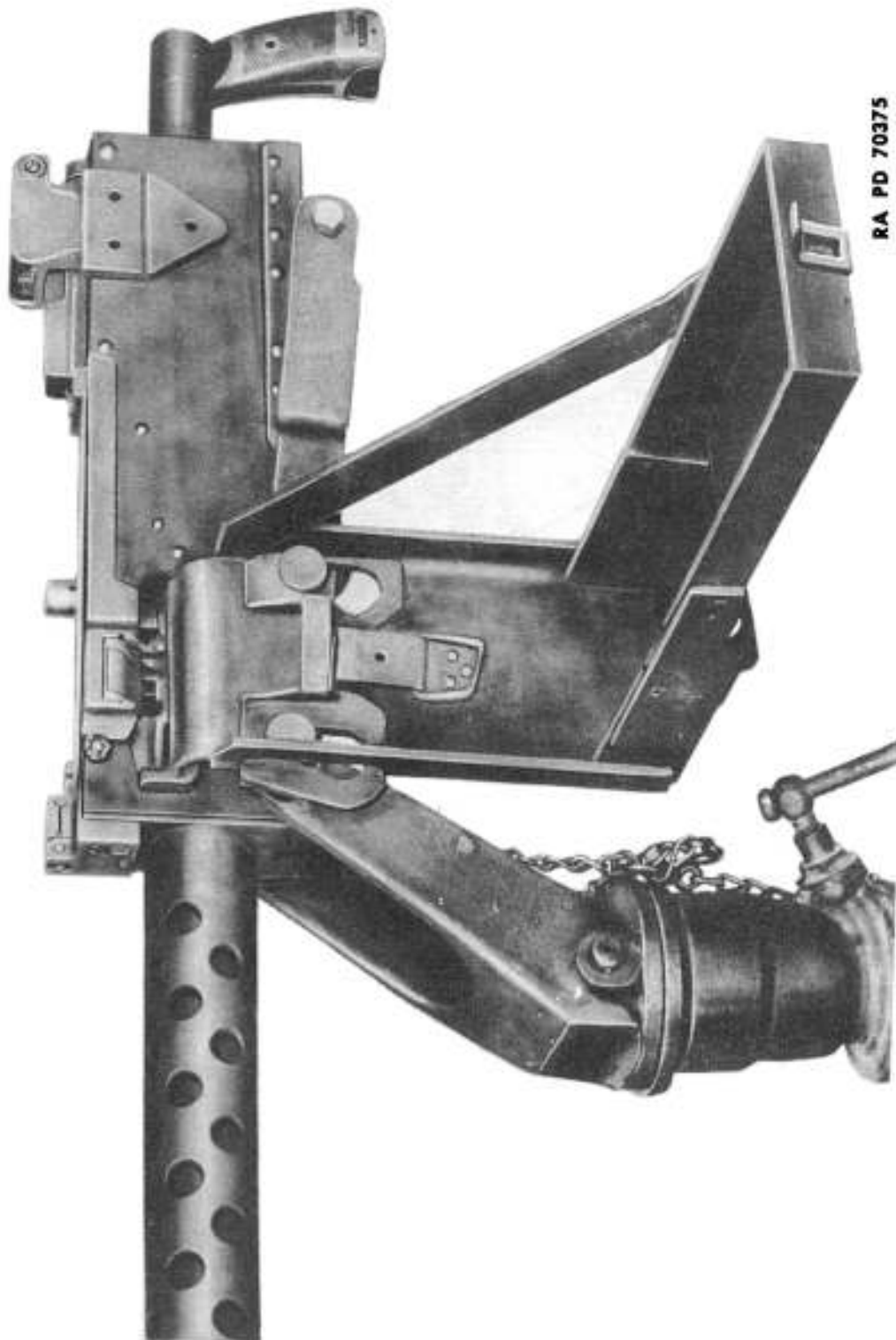


Figure 4—Truck Pedestal Mount M31

MACHINE GUN MOUNTS FOR TRUCKS



RA PD 70375

Figure 5—Cal. .30 Machine Gun Mount M48 with TAC Holder for Ammunition Box M1



INTRODUCTION

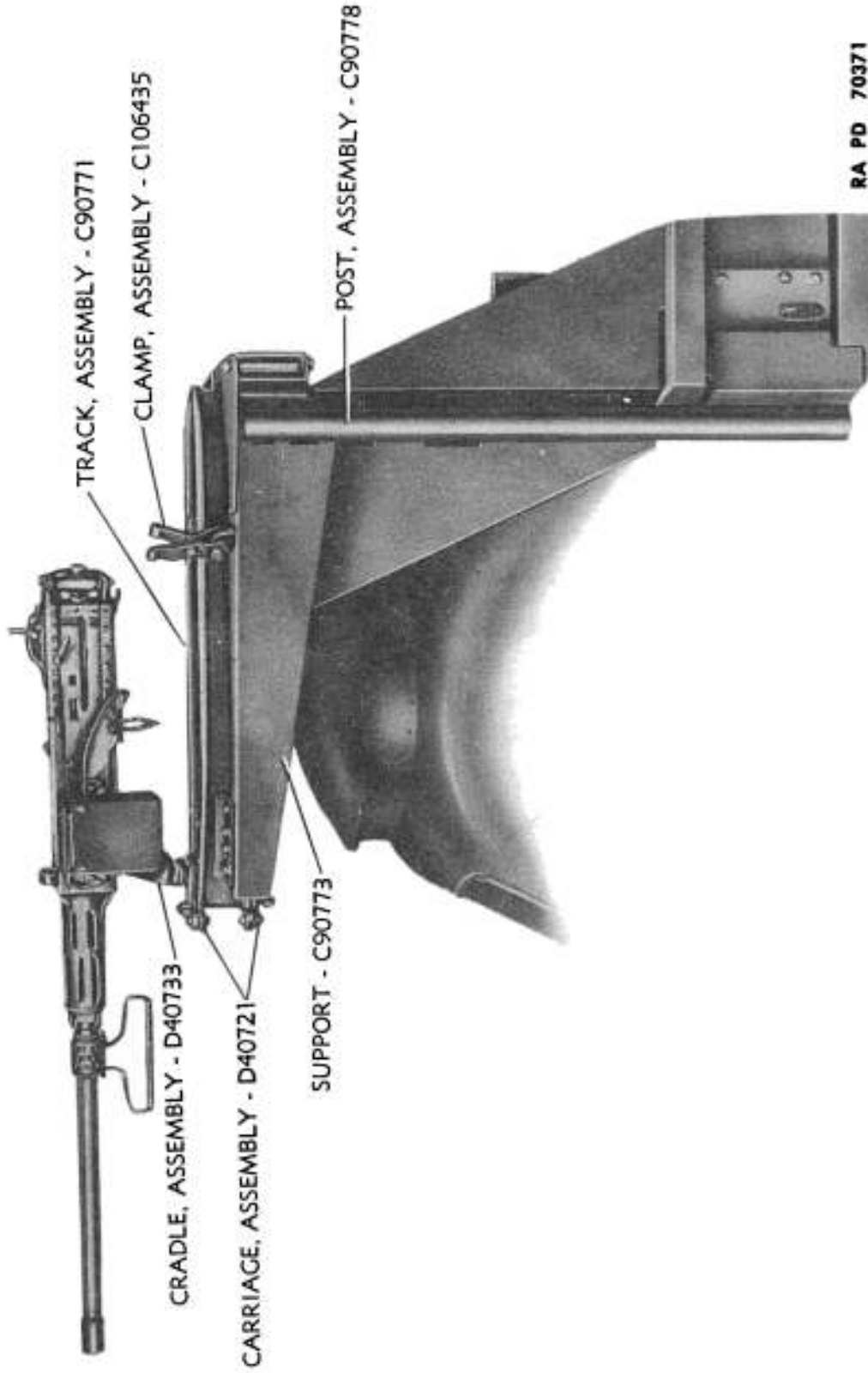
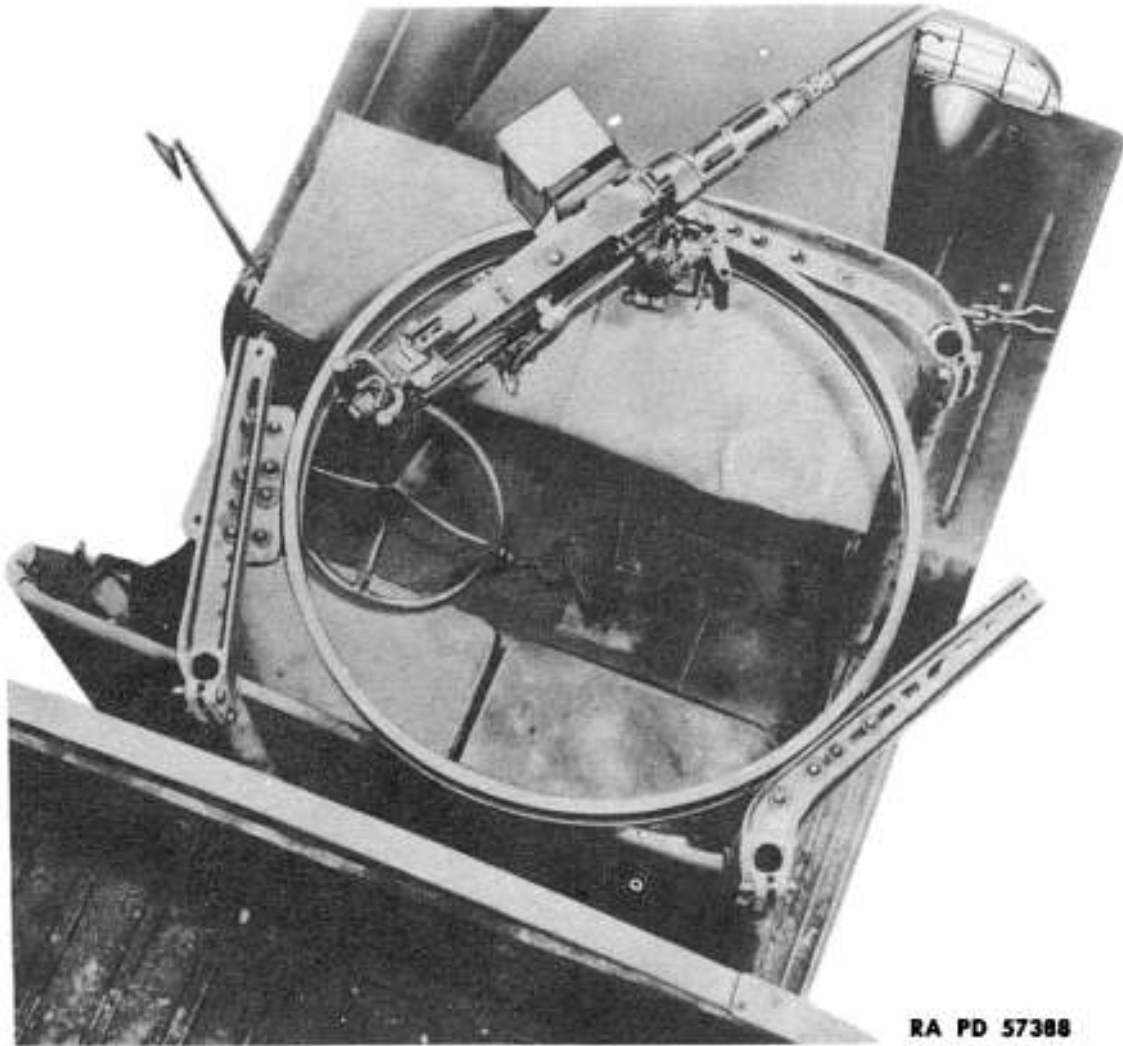


Figure 6—Truck Mount M32—Left Side View

TM 9-224

2

## MACHINE GUN MOUNTS FOR TRUCKS



RA PD 57388

**Figure 7—Truck Mount M36—Top View**

b. Truck Mounts M32, M36, M37, M37A1, and M37A2 (figs. 6, 7, and 8). Each mount consists essentially of a cradle with a roller carriage on a circular track. The cradle is rotatable in the pintle sleeve of the carriage, and is adjustable for elevation. The carriage is guided on the track by means of rollers. The track is secured to the vehicle by supports.

(1) Each mount can be used with either the Browning Machine Gun, cal. .30, M1919A4, flexible, or Browning Machine Gun, cal. .50, M2, heavy barrel, flexible.

(2) The trucks with which the mounts are used are as follows:

(a) The M32 Truck can be installed only on the 2½-ton, 6 x 6, long wheel base closed trucks with conventional steel bodies.

(b) The M36 Truck Mount is used on the following trucks:

1. 2½-ton, 6 x 6 (GMC), L.W.B., open cab truck.
2. 2½-ton, 6 x 6 (GMC), S.W.B., open cab truck.
3. 2½-ton, 6 x 6 (GMC), C.O.E., open cab truck.