

# **MAINTENANCE MANUAL**

**4—5 TON 4 x 4 TRACTOR-TRUCK  
THE AUTOCAR COMPANY**

**BUILT FOR  
UNITED STATES ARMY**



**Use this book only for  
MODEL NUMBER  
U—7144—T**

**CONTRACT NUMBERS  
W—398—QM—10141  
W—398—QM—10802**

**U. S. A. REGISTRATION NUMBERS  
W—461794 TO W—462750  
W—482421 TO W—482632  
W—482662 TO W—482674  
W—487221 TO W—487320**

TM 10-1117

WAR DEPARTMENT,  
Washington, September 4, 1941

TM 10-1117, Maintenance Manual, Tractor Truck 4-5-Ton, 4x4, Autocar (Model U-7144-T) published by The Autocar Company is furnished for the information and guidance of all concerned.

(AG 062.11 (4/26/41) PC (C), June 10, 1941.)

By order of the Secretary of War:

G. C. MARSHALL,  
*Chief of Staff.*

Official:

E. S. ADAMS,  
*Major General,  
The Adjutant General.*

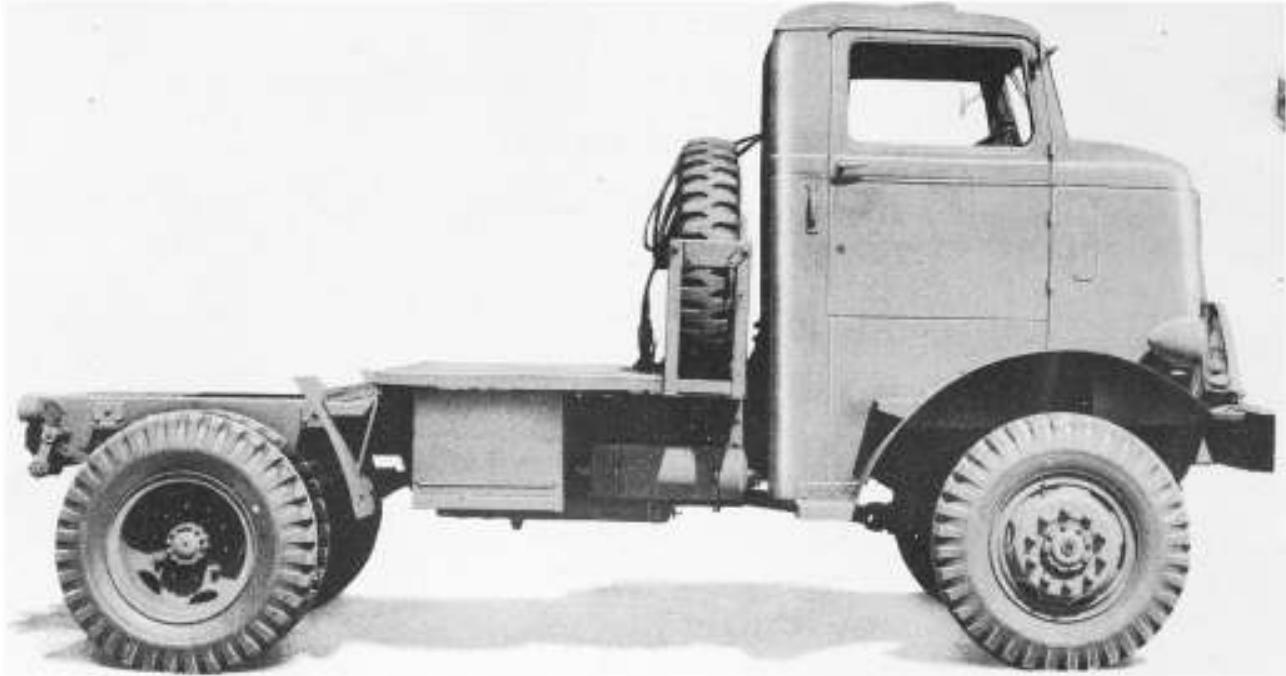
# MAINTENANCE MANUAL

4-5 Ton, 4x4 Tractor Truck

Model Number U-7144-T

## CONTENTS

	Page No.
General Information.....	1-5
Dimensions .....	3-4
Instruments and Controls.....	6-10
Driver's Instructions .....	11-12
Precautions for Winter.....	12-13
Lubrication .....	16-17
Engine .....	19-26
Oil Filter .....	27
Governor .....	28-29
Air Cleaner .....	36
Fuel System .....	30-35
Carburetor .....	30-32
Fuel Filter .....	33
Fuel Pump .....	34-35
Cooling System .....	37-38
Fan .....	37
Water Pump .....	38
Electrical System .....	39-59
Wiring Diagram .....	40-41
Operation and Adjustment.....	45-53
Generator .....	54-55
Distributor .....	56-58
Starting Motor .....	59
Clutch .....	60-62
Transmission .....	63-65
Transfer Case .....	66-68
Driveshafts and Universal Joints.....	69
Front Axle .....	70-79
Front Wheel Alignment.....	70-72
Adjustment of Spiral Bevel Gears.....	78-79
Rear Axle .....	80-83
Brakes, Driveshaft Hand.....	84
Brakes, Air .....	86-93
Diagram .....	86-87
Operation and Adjustment.....	89-93
Service Chart .....	93
Steering .....	94-95
Springs .....	96-97
Shock Absorbers .....	98-99
Wheels .....	100
Bearing Chart .....	101

**AUTOCAR MODEL U-7144-T****4-5 Ton 4 x 4 Tractor Truck**

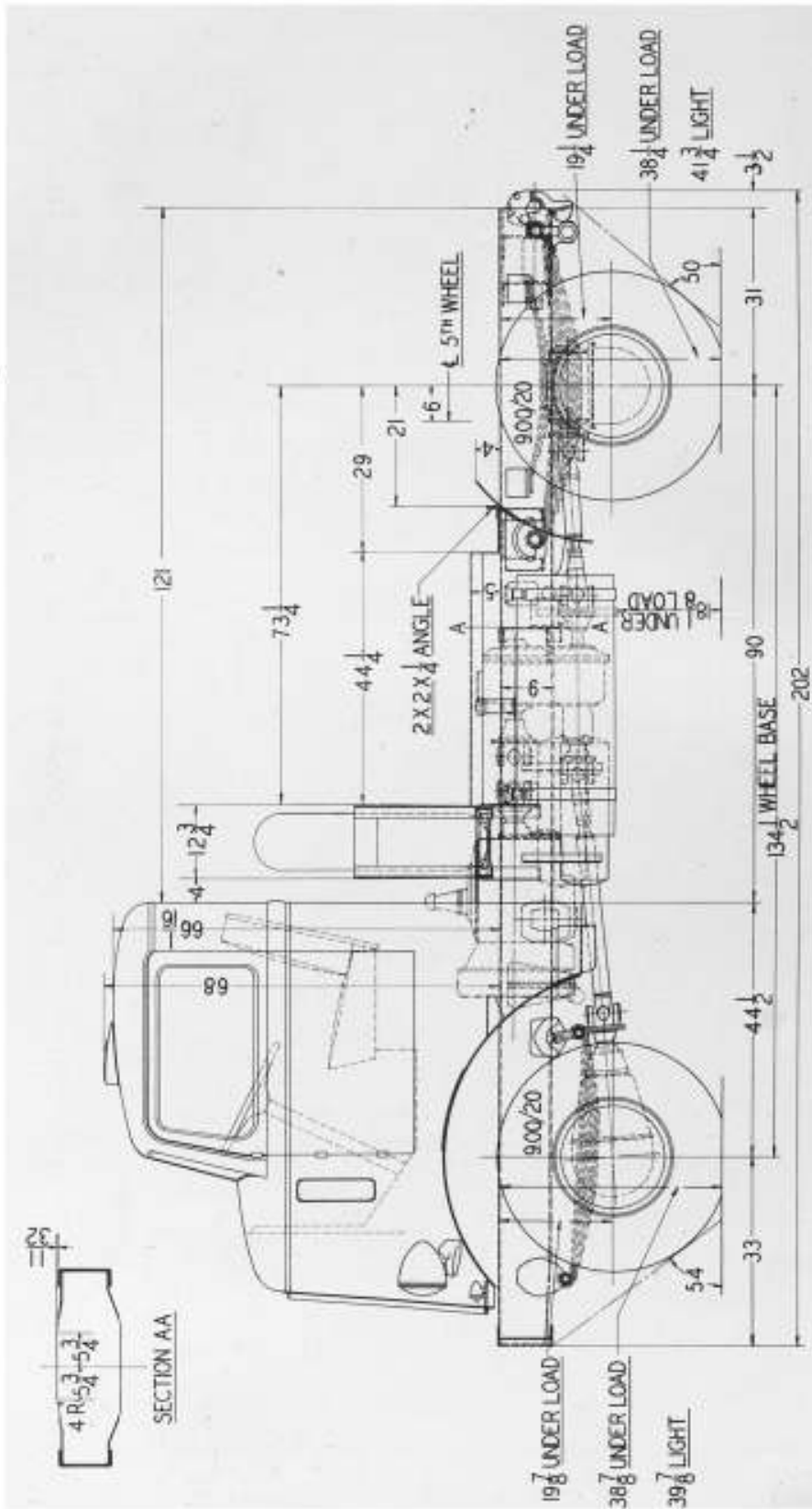
Wheelbase.....	134½"
Back of Cab to C/L of Rear Axle.....	90"
Back of Cab to End of Frame.....	121"

ENGINE.....	Hercules
Model.....	RXC
Cylinders.....	6
Bore.....	4⅝"
Stroke.....	5¼"
Displacement—Cu. In.....	529
A.M.A. Horsepower.....	51.3

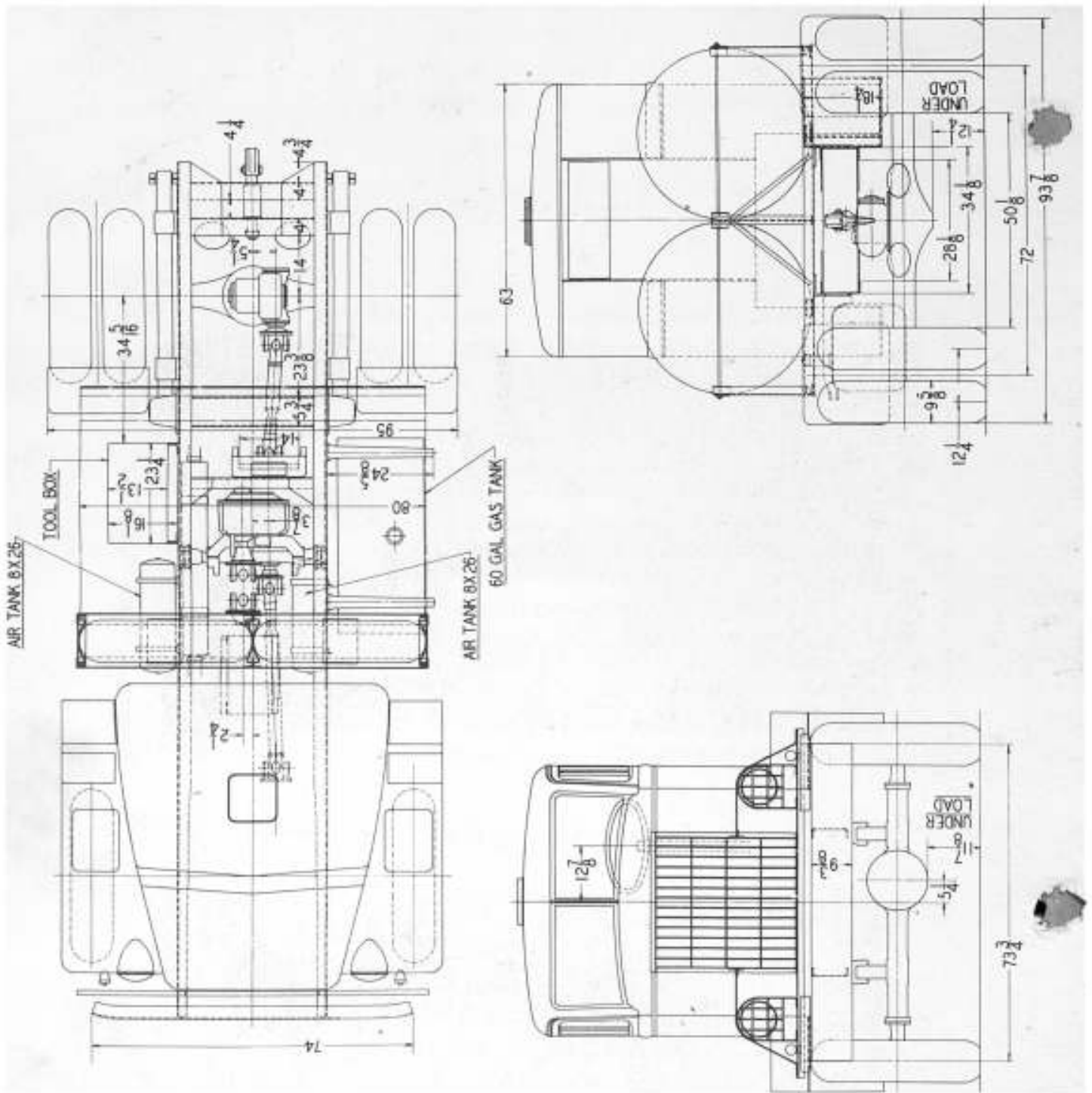
WEIGHT	Front	Rear	Tc
Chassis and Cab, Complete as Illustrated.....	6900	5300	12200

TIRES—9.00/20—10 Ply, Bus-Balloon, Mud and Snow Type Tread.

### DIMENSIONS



DIMENSIONS



### PURPOSE OF THIS MANUAL

This manual is designed to present general specifications, maintenance information and certain repair instructions on units used in this vehicle in a convenient manner.


The sequence of units is identical with those used in the Standard Parts Manuals to facilitate the use of the books for reference purposes.

### SERIAL NUMBERS

When ordering replacement parts, the serial number of the vehicle must always be specified. Serial number is stamped on name plate on right hand side of instrument panel. (Also stamped on left hand frame rail just ahead of gasoline tank.)

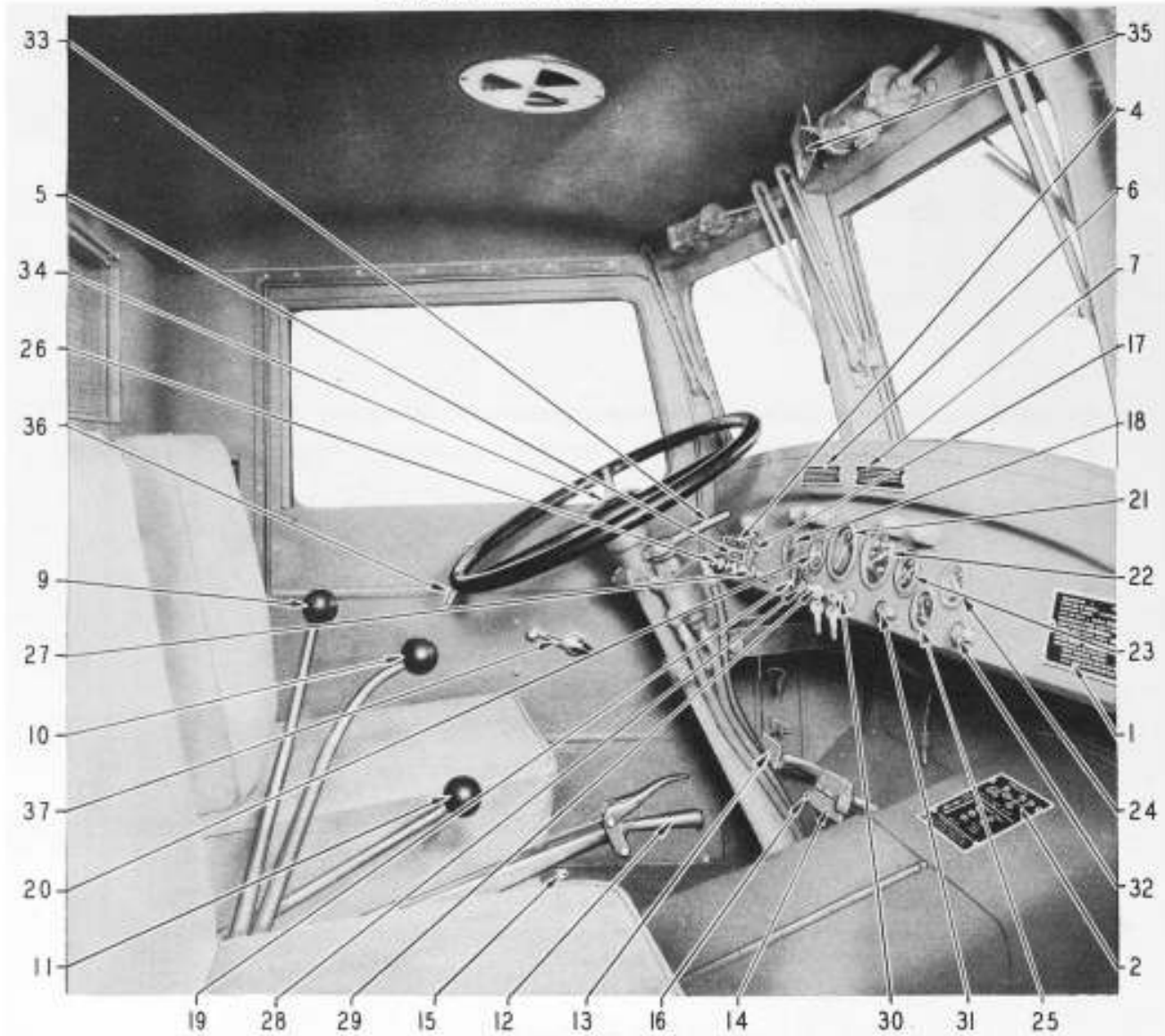
NOMENCLATURE:	-	TRACTOR TRUCK, 4 X 4
SUPPLY ARM OR SERVICE		
MAINTAINING VEHICLE	-	QUARTERMASTER CORPS
MAKE AND MODEL	-	AUTOCAR [REDACTED]
MANUFACTURER'S SERIAL NUMBER	-	[REDACTED]
WEIGHT, UNLOADED	-	[REDACTED]
MAXIMUM GROSS WEIGHT, LOADED	-	[REDACTED]
SEMI-TRAILER MAXIMUM GROSS WEIGHT	-	[REDACTED]
DATE OF DELIVERY	-	[REDACTED]
RECOMMENDED BY MANUFACTURER		
OCTANE RATING OF GASOLINE		- 62 MIN.
S. A. E. GRADE OF OIL FOR SUMMER USE		- 40
S. A. E. GRADE OF OIL FOR WINTER USE		- 30

### ENGINE NUMBER

OIL PRESSURE AT WORKING SPEED		26	LBS. MIN.
FIRING ORDER	1-5-3-6-2-4		
ENGINE No	128131	SIZE	4 <sup>5</sup> / <sub>8</sub> x 5- <sup>1</sup> / <sub>4</sub>
MODEL	RXC	TAPPET CLEARANCE	EXH. .010 INT. .006
HERCULES MOTORS CORP. CANTON, OHIO U.S.A.			
	UNITED STATES PAT. No's.		FRANCE PAT. No's.
	1960093-1840010	1525883-1972752	758852 NOV. 7-33
	1351293-1845015		780372 JAN. 29-35
	1887998-1909926	CANADA PAT. No.	780801 FEB. 11-35
1895632-1836945	347715 JAN. 22-35		

Located on the left hand side of the cylinder block. Also stamped in cylinder block at upper right hand corner in front.

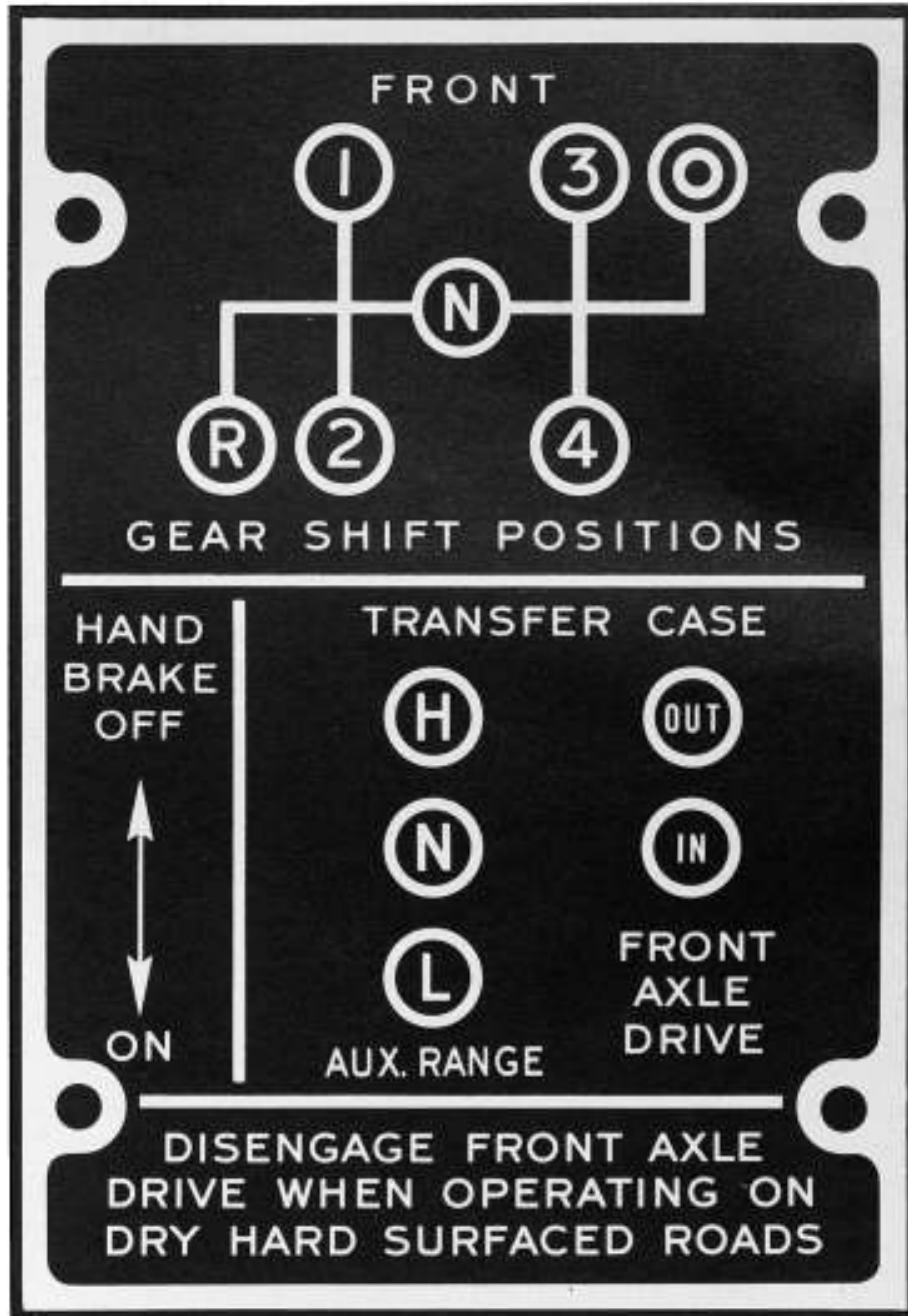
## INSTRUMENTS AND CONTROLS



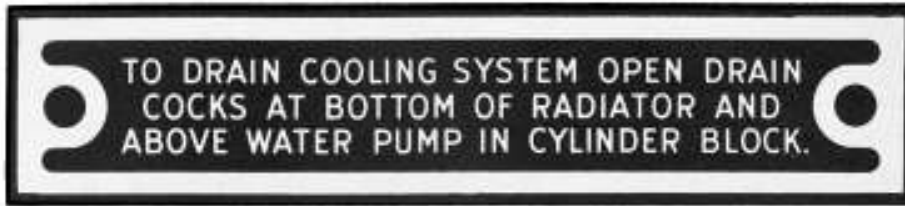
- |  |                                    |
|--|------------------------------------|
| 1 Name Plate                                   | 20 Air Pressure Gauge              |
| 2 Transmission and Transfer Case Diagram Plate | 21 Tachometer                      |
| 4 Drain Caution Plate                          | 22 Speedometer                     |
| 5 Publications Reference Plate                 | 23 Oil Pressure Gauge              |
| 6 Engine Speed Caution Plate                   | 24 Heat Indicator Gauge            |
| 7 Buzzer Caution Plate                         | 25 Gasoline Gauge                  |
| 9 Transfer Case Gear Shift Lever               | 26 Windshield Wiper Control Valves |
| 10 Front Axle Declutching Lever                | 27 4-Position Light Switch         |
| 11 Main Transmission Gear Shift Lever          | 28 Carburetor Choke                |
| 12 Hand Brake Lever                            | 29 Tachometer Lock Switch          |
| 13 Clutch Operating Pedal                      | 30 Ignition Switch                 |
| 14 Foot Brake Pedal                            | 31 Throttle Button                 |
| 15 Starter Button                              | 32 Panel Lights Rheostat           |
| 16 Foot Dimmer Switch                          | 33 Air Brake Hand Control Valve    |
| 17 Viscometer                                  | 34 Horn Button                     |
| 18 Ammeter                                     | 35 Rear View Mirror                |
| 19 Auxiliary Ammeter                           | 36 Door Opening Handle             |
|  | 37 Door Window Regulator Lever     |



DESCRIPTION OF CAB EQUIPMENT AND OPERATING INSTRUMENTS  
TRANSMISSION AND TRANSFER CASE DIAGRAM PLATE No. 2

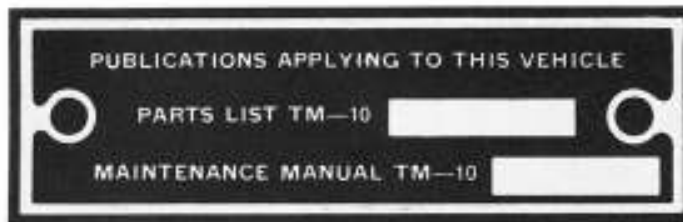


Located to the right of the driver on the top of the engine cover in the cab.



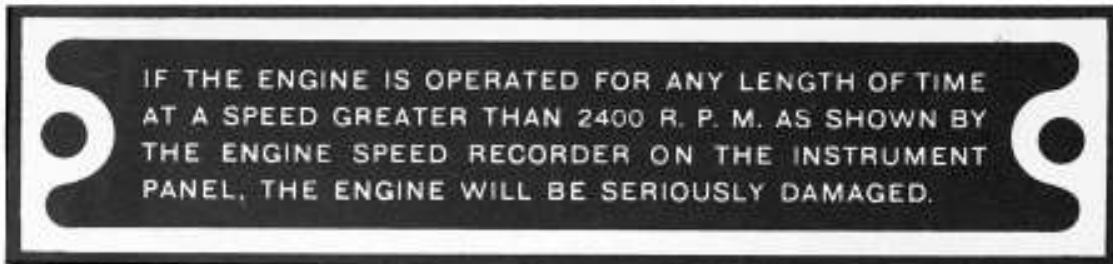
**DRAIN CAUTION PLATE No. 4**

Located on left hand side of instrument panel



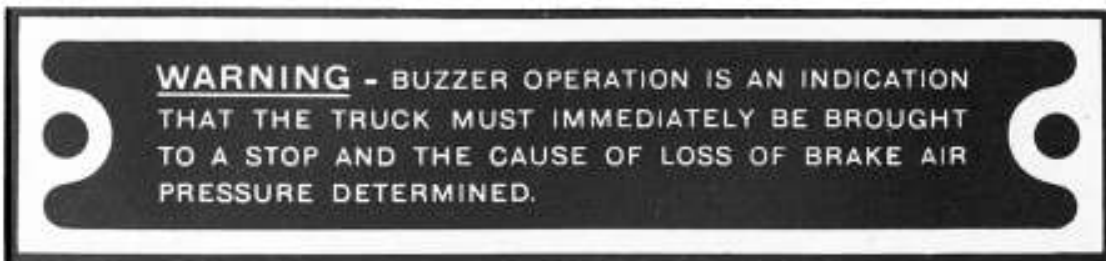
**PUBLICATIONS REFERENCE PLATE No. 5**

Located on left hand side of instrument panel



**ENGINE SPEED CAUTION PLATE No. 6**

Located in center of instrument panel



**BUZZER CAUTION PLATE No. 7**

Located in center of instrument panel