

**DODGE TRUCK**  
**PARTS LIST**  
FOR  
**BRITISH ARMY**

**MODEL T-110L-5**  
**3 TON 4 X 2 -160" W.B.**

**SUPPLY MECH. 6118**  
**ISSUED APRIL 15, 1944**



**BUILT FOR**  
**BRITISH WAR DEPARTMENT**  
**CHRYSLER CORPORATION OF CANADA, LIMITED**  
(PARTS DIVISION)

0-1.

# DODGE TRUCK PARTS LIST

## GENERAL INFORMATION

### 4 X 2

Symbol	T-110L-5 (160" W.B.)
Two Speed Axle	6.33 and 8.81 To 1 Ratio
No. Cylinders	6
Cyl. Bore	3-7/16"
Stroke	4-1/4
Starting Serial No.	91,107,224
Last Serial No.	91,114,723

Specifications
Alphabetical and Illustration Index
Numerical Index
Group 1 Accessories, Bumpers
Groups 2 & 3 Axles—Front & Rear
Groups 4 & 5 Brakes—Hand & Service
Group 6 Clutch
Group 7 Cooling
Group 8 Electrical
Group 9 Engine
Group 10 Engine Oiling
Group 11 Exhaust
Group 12 Fenders & Sheet Metal
Group 13 Frame
Group 14 Fuel
Group 15 Hood
Group 16 Prop. Shaft & U. Joint
Groups 17 & 18 Springs & Standard Parts
Group 19 Steering
Group 20 Tools
Group 21 Transmission & Power Pump
Group 22 Wheels
Group 23 Cab

WM-3952

## INFORMATION

The information consolidated into this Parts List includes the following:

Part Name.	Part Number.
Model application.	Quantity used per truck.
Effective points of changes by truck serial number, engine number or body number.	Special notes necessary for proper identification of parts.

## ARRANGEMENT

Each major group is divided into sub-groups which are numbered and lettered. The numbers used on the sub-groups are the same as the numbers of their respective major groups. The letters on the sub-groups are in alphabetical sequence in the major groups - for example:

Major Group No. 9 has sub-groups 9-A, 9-B, 9-C, etc.

Attaching parts such as bolts, nuts, studs, etc., can easily be identified as in most cases they follow the part or parts with which they are used and are shown indented from the margin.

## ILLUSTRATIONS

Illustrations are included at the beginning of each major group. The correct names for parts in the illustrations are shown below or on the back of the picture and are keyed to the picture by reference numbers. Immediately following the part names will be

found the number of the parts list sub-group in which the part is listed.

An index of illustration plate numbers will be found immediately preceding the alphabetical index.

## PAGE NUMBERING

To facilitate locating parts, all pages are numbered in consecutive order by major groups, the page number showing first the major group number followed by the number of

the page in the group -- for example:

Page 9-3, 9-4, 9-5, indicate: Group 9, page 3: Group 9, page 4: Group 9, page 5.

## ALPHABETICAL INDEX

Quick reference to any part by name is provided in the alphabetical index. This

index shows the number of the sub-group in which the parts are listed.

## NUMERICAL INDEX

Reference to any part number is provided in the numerical index. This index lists all

parts in numerical sequence and shows the sub-group in which each part number is listed.

## STANDARD PARTS

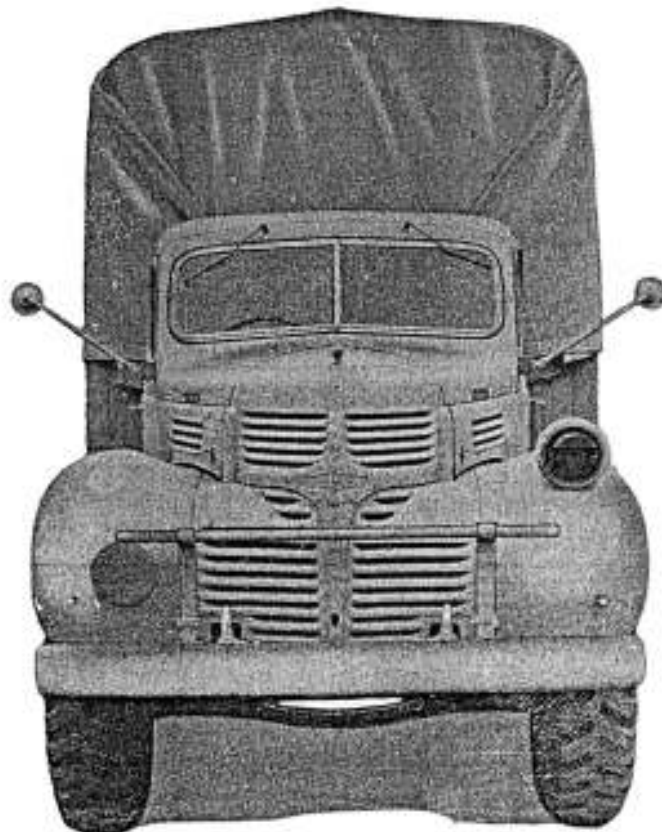
For illustrations and description of Standard Parts, such as screws, bolts, nuts,

washers, etc., see Group 18.

SIDE VIEW



FRONT VIEW









# ALPHABETICAL INDEX

Group	Group	Group
<b>A</b>	<b>B (Cont'd)</b>	<b>B (Cont'd)</b>
Absorbers - Shock..... 17-K	Body Hold Down Bolts... 23-B	Brake Solution - Hydraulic..... 5-A
Accelerator Pedal..... 14-A	Body Hold Down Brackets 13-D	Brake Tubes..... 5-J
Adapter - Speedometer Drive..... 3-H	Body - Master Cylinder. 5-I	Brake Tube Frame Tee... 5-J
Adjuster - Differential Bearing..... 3-C	Body Rear Panel or Section..... 23-0	Breather Pipe..... 10-A
Ammeter Assembly..... 8-A	Body - Wheel Brake Cylinder..... 5-L	Breather Pipe Air Cleaner..... 10-A
Arm - Fuel Pump Rocker. 14-F	Bolts - Body..... 23-Z	Brushes - Generator.... 8-E
Arm - Front Door Check. 23-F	Bolts - Body Hold Down. 23-B	Brushes - Starter Motor 8-L
Arm - Steering Gear.... 19-D	Bolt - Front Spring.... 17-C	Bumper - Front..... 1-A
Arm - Steering Knuckle. 2-E	Bolt - Rear Spring.... 17-H	Bumper - Front Axle.... 17-E
Arm - Windshield Adjusting..... 23-S	Bolt - Wheel Hub..... 22-C	Bumper - Front Door... 23-D
Arm - Windshield Wiper. 23-T	Booster Brake Check Valve..... 5-M	Bumper - Rear Spring Axle..... 17-J
Armature - Generator... 8-E	Booster Brake Cylinder Support Bracket..... 5-M	Bushing - Front Spring. 17-C
Armature - Starter Motor..... 8-L	Booster Brake Tubes.... 5-M	Bushing - Rear Spring.. 17-H
Auxiliary Fuel Tank Switch..... 8-N	Booster Brake Vacuum Cylinder..... 5-M	Button - Horn ..... 19-H
Auxiliary Spring..... 17-F	Box - Glove..... 23-C	
Auxiliary Spring Bumper Bracket..... 13-E	Bracket - Auxiliary Spring Bumper..... 13-E	<b>C</b>
Axle - Front..... 2-A	Bracket - Body Hold Down..... 13-D	Cab Assembly..... 23-A
Axle - Rear..... 3-A	Bracket - Booster Brake Cylinder Support..... 5-M	Cab Roof Drip Moulding. 23-K
Axle Shaft..... 3-E	Bracket - Exhaust Pipe. 11-A	Cab Side Panel..... 23-0
	Bracket - Front Spring. 13-E	Cable - Battery Ground. 8-C
	Bracket - Front Spring Bumper..... 17-E	Cable - Battery to Starter..... 8-B
	Bracket - Fuel Tank Support..... 14-H	Cable - Horn Button.... 19-H
	Bracket - Generator Mounting..... 8-E	Cable - Ignition..... 8-H
	Bracket - Muffler Front Support..... 11-B	Cable - Speedometer.... 21-F
	Bracket - Muffler Rear. 11-B	Cable - Tow..... 20-A
	Bracket - Pick..... 23-Y	Camshaft..... 9-J
	Bracket - Pintle Hook.. 13-G	Camshaft Bearing..... 9-J
	Bracket - Radiator Support..... 13-D	Camshaft Sprocket..... 9-J
	Bracket - Radiator Tie Rod Dash..... 23-G	Cap - Distributor..... 8-C
	Bracket - Rear Spring.. 13-E	Cap - Fuel Tank Filler. 14-H
	Bracket - Running Board 13-D	Cap - Radiator Filler.. 7-B
	Bracket - Shovel..... 23-Y	Carburetor Air Cleaner. 14-D
	Bracket - Spare Wheel.. 23-Z	Carburetor Assembly.... 14-D
	Bracket - Steering Gear Housing..... 19-C	Carburetor to Distributor Vacuum Control Tube..... 14-D
	Bracket - Sub Lamp.... 8-P	Carburetor - Repair Package..... 14-D
	Bracket - Tail and Signal Lamp..... 8-0	Carrier - Differential. 3-C
	Bracket - Windshield Arm..... 23-S	Case - Differential.... 3-C
	Bracket - Windshield Hinge..... 23-S	Case - Differential Gear Support..... 3-D
	Brake Band..... 4-B	Cage - Drive Pinion Bearing..... 3-D
	Brake Band Support.... 4-B	Case - Transmission.... 21-A
	Brake Drum..... 4-A	Centre Grille Moulding. 12-C
	Brake Hose..... 5-F	Chain Case Cover..... 9-K
	Brake Pedal..... 5-H	Chain Case Cover Plate. 9-K
	Brake Pedal Extension Lever..... 5-H	Chain - Timing..... 9-K
	Brake Pedal Return Spring..... 5-H	Chain - Tire..... 20-A
		Chain - Tow..... 20-A
		Channel - Front Door Glass Front Run..... 23-E
		Channel - Front Door Glass Lower..... 23-E
		Chassis Wiring..... 8-R
<b>B</b>		
Back - Seat..... 23-U		
Back Window Sliding Panel..... 23-0		
Ball - Carburetor..... 14-D		
Band - Brake..... 4-D		
Bar - Radiator Crash... 1-B		
Battery Assembly..... 8-B		
Battery Ground Cables.. 8-C		
Battery to Starter Cable..... 8-B		
Battery Support..... 13-C		
Bearing - Camshaft..... 9-J		
Bearing - Clutch Release..... 6-D		
Bearing - Connecting Rod..... 9-G		
Bearing - Crankshaft... 9-E		
Bearing - Differential. 3-C		
Bearing - Drive Pinion. 3-D		
Bearing - Propeller Shaft Centre..... 16-C		
Bearing - Steering Knuckle..... 2-D		
Belt - Fan..... 7-A		
Blackout Lamp..... 8-Q		
Blade - Fan..... 7-A		
Blade - Windshield Wiper..... 23-T		
Block - Cylinder..... 9-B		
Block - Rifle Butt..... 23-X		
Board - Floor..... 23-A		
Boards - Running..... 12-C		
Board - Toe..... 23-A		
Body Assembly..... 23-Y		
Body Bolts..... 23-Z		



## ALPHABETICAL INDEX

Group	Group	Group
<b>C (Cont'd)</b>	<b>C (Cont'd)</b>	<b>E</b>
Choke Control..... 14-C	Crankshaft..... 9-E	End or Section - Front.. 23-G
Chuck - Steering Gear... 19-A	Crankshaft Bearing..... 9-E	End - Drag Link Package. 2-G
Cleaner - Breather Pipe	Crankshaft Sprocket.... 9-E	End - Tie Rod..... 2-F
Air..... 10-A	Crankshaft Starting Jaw. 9-E	End - Tie Rod Package... 2-F
Cleaner - Carburetor Air 14-D	Cross Brace - Radiator.. 7-C	End Wrench Kit..... 20-A
Clip - Front Spring..... 17-D	Crossmember - Frame..... 13-B	Engine Assembly..... 9-A
Clip - Generator to	Crossmember - Frame	Engine Dust Pan..... 12-A
Regulator Wiring..... 8-R	Centre Bearing..... 13-B	Engine Front Support... 13-B
Clip - Rear Spring..... 17-I	Crossmember - Frame	Engine Support..... 9-N
Clip - Tail Lamp Wire... 8-T	Front Intermediate.... 13-B	13-D
Clutch Cover and Pressure	Crossmember - Frame Rear 13-B	Elbow - Cylinder Head
Plate..... 6-C	Crossmembers - Frame	Water Outlet..... 9-C
Clutch Driving Disc..... 6-B	Rear Spring..... 13-B	Exhaust Manifold..... 9-D
Clutch - High Speed..... 3-D	Cups - Wheel Bearing.... 22-E	Exhaust Pipe..... 11-A
Clutch Housing..... 6-A	Cushion - Seat..... 23-U	Exhaust Pipe Bracket... 11-A
Clutch Pedal..... 6-F	Cylinder Block..... 9-B	Exhaust Pipe Flange.... 11-A
Clutch Pedal Return	Cylinder Block Dowel.... 9-B	Expander - Piston..... 9-H
Spring..... 6-F	Cylinder Block Plug..... 9-B	Extinguisher - Fire.... 1-C
Clutch Pressure Plate... 6-C	Cylinder - Booster Brake	
Clutch Release Bearing.. 6-D	Vacuum..... 5-M	
Clutch Release Fork..... 6-E	Cylinder Head..... 9-C	
Coil - Generator Field.. 8-E	Cylinder Head Plugs.... 9-C	
Coil - Ignition..... 8-I	Cylinder Head Water Out-	
Coil - Starter Motor	let Elbow..... 9-C	
Field..... 8-L	Cylinder - Master..... 5-I	
Condenser - Generator... 8-E	Cylinder - Wheel Brake.. 5-L	
Condenser - Regulator... 8-E	Cylinder - Master -	
Condenser - Ignition	Package..... 5-I	
Switch..... 8-I	Cylinder - Wheel Brake -	
Cones - Wheel Bearing .. 22-E	Package..... 5-L	
Connecting Rod..... 9-G	<b>D</b>	
Connecting Rod Bearings. 9-G	Dash Grommets..... 8-S	
Connections - Master	Deflector - Front Fender	
Cylinder..... 5-I	Grille Air..... 12-B	
Connections - Wheel	Diaphragm - Fuel Pump... 14-F	
Brake Cylinder..... 5-L	Differential..... 3-C	
Control Cable Bracket... 23-G	Differential Bearings... 3-C	
Control - Choke..... 14-C	Differential Bearing	
Control - Throttle Hand. 14-B	Adjuster..... 3-C	
Core - Radiator..... 7-B	Differential Carrier.... 3-C	
Countershaft Gears..... 21-D	Differential Case..... 3-C	
Countershaft - Trans-	Differential Gear Support	
mission..... 21-B	Case..... 3-D	
Coupling - Windshield	Differential Pinion Gear 3-C	
Wiper..... 23-T	Differential Side Gear.. 3-C	
Cover - Chain Case..... 9-K	Differential Spider.... 3-C	
Cover - Drag Link Dust -	Disc - Clutch Driving... 6-B	
Package..... 2-G	Distributor Assembly... 8-D	
Cover - Front Door Upper	Distributor Suppressor.. 8-D	
Wedge..... 23-D	Door - Glove Box..... 23-C	
Cover - Fuel Pump Top... 14-F	Door Lock Striker..... 23-D	
Cover - Grille..... 1-D	Door Trim Panel..... 23-O	
Cover - Master Cylinder	Dowel-Cylinder Block... 9-B	
Supply Tank..... 5-I	Drag Link Dust Cover... 2-G	
Cover and Pressure Plate-	Drag Link - Steering... 2-G	
Clutch..... 6-C	Drain - Water Jacket... 9-B	
Cover - Seat Back..... 23-U	Drive Gear and Pinion -	
Cover - Transmission	Matched Set..... 3-D	
Case..... 21-E	Drive Pinion Bearing... 3-D	
Cover - Valve Spring.... 9-L	Drive Pinion Bearing	
Cowl Hood Protector	Cage..... 3-D	
Lacing..... 23-G	Drive Pinion Companion	
Cowl to Roof Panel	Flange..... 3-F	
Moulding..... 23-M	Drum - Brake..... 4-A	
Cowl Ventilator Lid.... 23-Q	Drums - Wheel Brake... 22-D	
Crank - Starting..... 20-A	Dust Cover - Drag Link.. 2-G	
Crankcase Ventilator... 9-M	Dust Cover - Tie Rod End 2-F	
		<b>F</b>
		Fan Belt..... 7-A
		Fan Blade..... 7-A
		Fan Pulley..... 7-A
		Fender - Front..... 12-B
		Filter - Fuel..... 14-G
		Filter to Fuel Pump Tube 14-G
		Filter - Oil..... 10-C
		Fire Extinguisher..... 1-C
		Flange - Drive Pinion
		Companion..... 3-F
		Flange - Exhaust Pipe... 11-A
		Flange - Propeller Shaft 16-D
		Filler - Front Fender... 12-B
		Flanges - Hub Sling.... 22-C
		Float - Carburetor..... 14-D
		Floor Board..... 23-A
		Fluid - Shock Absorber.. 17-K
		Flywheel..... 9-F
		Fork - Clutch Release... 6-E
		Fork - Gearshift..... 21-E
		Fork - Sliding Clutch
		Shift..... 3-D
		Frame Assembly..... 13-A
		Frame Crossmembers.... 13-B
		Frame - Generator..... 8-E
		Frame - Starter Motor... 8-L
		Frame - Windshield..... 23-S
		Front Axle..... 2-A
		Front Axle Bumper..... 17-E
		Front Axle "I" Beam.... 2-B
		Front Bumper..... 1-A
		Front Door Bumper..... 23-D
		Front Door Check Arm... 23-F
		Front Door Glass..... 23-F
		Front Door Glass Run... 23-N
		Front Door Glass Stop..
		Screw..... 23-F
		Front Door Lock and Link
		Assy..... 23-J

# ALPHABETICAL INDEX

Group	Group	Group
<b>F (Cont'd)</b>	<b>G (Cont'd)</b>	<b>H (Cont'd)</b>
Front Door Glass Channel 23-E	Gauge - Oil..... 10-B	Horn Button..... 19-H
Front Door Hinge..... 23-I	Gears - Countershaft.... 21-D	Horn Button Cable..... 19-H
Front Door Lower Weather- strip..... 23-R	Gear - Differential Pinion..... 3-C	Horn - Carburetor Air... 14-D
Front Door Outside Handle..... 23-H	Gear - Differential Side 3-C	Hose - Booster Brake... 5-M
Front Door Remote Control Assy..... 23-J	Gears - Oil Pump..... 10-D	Hose - Brake..... 5-K
Front Door Remote Control Handle..... 23-H	Gear - Reverse Idler... 21-D	Hose - Fuel Tank Filler.. 14-H
Front Door Shell..... 23-F	Gears - Sliding..... 21-D	Hose - Oil Filter Tube.. 10-C
Front Door Weathercord.. 23-V	Gear - Sliding Clutch... 3-D	Hose - Radiator..... 7-B
Front Door Wedge..... 23-D	Gear - Speedometer..... 21-G	Housing - Clutch..... 6-A
Front Door Window Regulator..... 23-P	Gears - Transmission... 21-D	Housing - Gearshift.... 21-E
Front Door Window Regulator Handle..... 23-H	Gearshift Forks..... 21-E	Housing - Instrument... 8-J
Front Door Window Weatherstrip..... 23-R	Gearshift Housing..... 21-E	Housing - Rear Axle.... 3-B
Front End or Section... 23-G	Gearshift Lever..... 3-G	Housing - Steering Gear. 19-B
Front Fender..... 12-B	Gearshift Lever Rod.... 21-E	Hubs and Drums - Wheel.. 22-B
Front Fender Filler..... 12-B	Gearshift Rails..... 21-E	Hub Sling Flange..... 22-C
Front Fender Shield..... 12-B	Gearshift Rod Parts.... 3-G	Hub - Wheel..... 22-C
Front Fender Supports... 12-B	Generator Assembly.... 8-E	Hydraulic Brake Solution 5-A
Front Fender Welt..... 12-B	Generator Condenser... 8-E	
Front Shock Absorber... 17-K	Generator Pulley..... 8-E	<b>I</b>
Front and Rear Spring Brackets..... 13-E	Generator to Regulator Wiring (shielded).... 8-R	"I" Beam - Front Axle... 2-B
Front Spring..... 17-A	Generator to Regulator Wiring Clip..... 8-R	Idler Pinion..... 3-D
Front Spring Bolt..... 17-C	Glass - Front Door..... 23-F	Ignition Cable,Terminals and Nipples..... 8-H
Front Spring Bushing... 17-C	Glass - Windshield..... 23-S	Ignition Coil..... 8-I
Front Spring Clip..... 17-D	Glove Box..... 23-C	Ignition Switch..... 8-I
Front Spring Clip Seat.. 17-E	Grille Cover..... 1-D	Ignition Switch Condenser 8-I
Front Spring Shackles... 17-B	Grommets - Dash..... 8-S	Indicator - Oil Level... 10-G
Front Wheel Bearing Dust Washer..... 22-E	Grommet - Oil Gauge Tube 10-B	Instrument Housing..... 8-J
Front Wheel Bearing Retainer..... 22-E		Instrument Panel..... 23-O
Fuel Filter..... 14-G	<b>H</b>	Instrument Panel Lamp... 8-K
Fuel Gauge..... 14-E	Hand Brake Adjust Parts. 4-C	Instrument Panel Lamp.. Switch..... 8-N
Fuel Line Shut Off Tee.. 14-I	Hand Brake Lever..... 4-D	Intake Manifold..... 9-D
Fuel Pump..... 14-F	Hand Brake Lever Rod... 4-F	
Fuel Pump to Carburetor Tube..... 14-G	Hand Brake Lever Sector. 4-E	<b>J</b>
Fuel Pump Heat Shield... 14-F	Hand Brake Operating Lever..... 4-G	Jack Assembly..... 20-A
Fuel Shut Off Valve to Filter Tube..... 14-G	Handle - Front Door.... 23-H	Jacket - Steering Column 19-E
Fuel Tank..... 14-H	Handle - Hood Lock..... 15-B	Jaw - Crankshaft Starting..... 9-E
Fuel Tank Filler Cap... 14-H	Handle - Windshield Pull 23-S	Jets - Carburetor..... 14-D
Fuel Tank Filler Tube... 14-H	Hanger - Running Board Support..... 13-D	Joint - Propeller Shaft Universal..... 16-B
Fuel Tank to Shut Off Valve Tube..... 14-G	Head - Cylinder..... 9-C	Joint - Universal Pkge.. 16-B
Fuel Tank Support..... 14-H	Head - Generator Drive End..... 8-E	
	Headlamp Assy..... 8-F	<b>K</b>
<b>G</b>	Headlamp Switch..... 8-N	King Pin..... 2-C
Gaskets - Carburetor... 14-D	Headlamp Reinforcement.. 8-F	Kit - Tool..... 20-A
Gasket - Carburetor Package..... 14-D	High Speed Clutch..... 3-D	Knob - Windshield Wiper Control..... 23-T
Gaskets - Manifold..... 9-D	Hinge - Cowl Ventilator. 23-Q	Knuckle - Steering..... 2-D
Gasket - Oil Pan Package 10-G	Hinge - Front Door..... 23-I	
Gasket - Valve Spring Cover Package..... 9-L	Hinge - Glove Box Door.. 23-C	<b>L</b>
Gauge - Fuel..... 14-E	Hinge - Windshield..... 23-S	Lacing - Cowl Hood Protector..... 23-G
	Hood Half..... 15-A	Lacing-Hood..... 15-E
	Hood Hinge..... 15-A	Lacing - Radiator Shell. 7-C
	Hood Hinge Supports... 15-A	Lamp - Blackout..... 8-Q
	Hood Lacing..... 15-E	Lamp - Blackout Switch.. 8-N
	Hood Lock Handle..... 15-B	Lamp - Instrument Panel. 8-K
	Hooks - Pintle..... 13-G	Lamp - Signal or Stop... 8-O
	Horn Assembly..... 8-G	Lamp-Sub..... 8-P