

CHEVROLET

No. 197

ILLUSTRATED SPARE PARTS LIST

1940-1942

FOR

CANADIAN

MILITARY PATTERN VEHICLES

8 CWT	4 x 2
15 CWT	4 x 2
15 CWT	4 x 4
30 CWT	4 x 4
3 TON	4 x 4
F.A. GUN TRACTOR	4 x 4

NOT TO BE PUBLISHED

The information given in this document is not to be communicated, either directly or indirectly, to the press or to any person not holding an official position in His Majesty's Service.

ISSUED BY

GENERAL MOTORS PRODUCTS OF CANADA, LTD.

OSHAWA - ONTARIO

CHEVROLET

ILLUSTRATED

SPARE PARTS LIST

1940 - 1942

FOR

CANADIAN
MILITARY PATTERN VEHICLES

MODEL	PARTS LIST MODEL DESIGNATION	CHASSIS MODEL NUMBER	WHEELBASE	
8 CWT	4 x 2	8	8420	101"
15 CWT	4 x 2	15	8421	101"
15 CWT	4 x 4	15A	8444	101"
30 CWT	4 x 4	30	8441	134"
3 TON	4 x 4	60S	8442	134"
3 TON	4 x 4	60L	8443	158"
F.A. GUN TRACTOR	4 x 4	GT	8440	101"

NOT TO BE PUBLISHED

The information given in this document is not to be communicated, either directly or indirectly, to the press or to any person not holding an official position in His Majesty's Service.

ISSUED BY

GENERAL MOTORS PRODUCTS OF CANADA LTD.

OSHAWA

ONTARIO

Alphabetical
IndexEngine—0.000
Clutch—0.795Cooling—1.000
Oiling—1.426Electrical
2.004—2.999Fuel System
3.000
Carburetor
3.725
Pump—3.900Transmission
4.000—4.447

Transfer Case

Winch

Brakes
4.591—5.266Rear Axle—
Propellor Shaft
5.387—5.547Universal Joint—
Brake Drums
5.548—5.999Front Axle
6.008Steering
6.508—6.999Frames—Shock
Absorbers
7.000—7.411Springs
7.412—7.602

Bumper

Chassis Sheet
Metal—8.000
Tools—8.821Miscell.
9.000—16.999

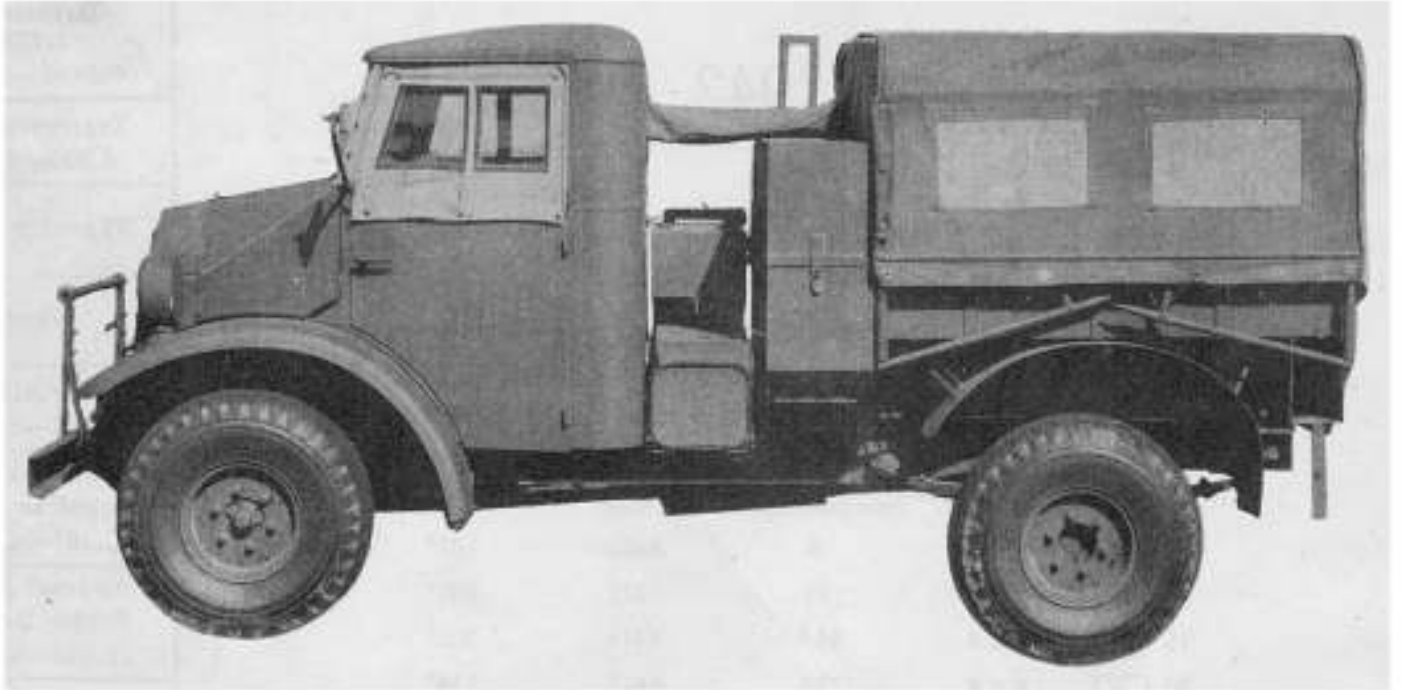
Cab—1st Type

Cab—2nd Type

Standard Parts

Numerical
Index

CHEVROLET -- SPARE PARTS LIST -- ARMY SPECIAL VEHICLES



C-8

THE ABOVE ILLUSTRATION SHOWS A SIDE VIEW OF C-8 (8 CWT. 4x2) ARMY TRUCK WITH A WIRELESS BODY.

THE PERSONNEL BODY OPTION IS ALSO AVAILABLE WITH THIS MODEL.

CHEVROLET -- SPARE PARTS LIST -- ARMY SPECIAL VEHICLES



C-15, C-15A

THE ABOVE ILLUSTRATION SHOWS A THREE-QUARTER FRONT VIEW OF A MODEL C-15 (15 CWT. 4x2) ARMY TRUCK WITH A VAN TYPE BODY OPTION.

SOME OF THE BODY OPTIONS AVAILABLE WITH THESE MODELS ARE:--VAN, OFFICE, WATER TANK, WIRELESS, CABLE LAYER, PERSONNEL AND GENERAL SERVICE.

CHEVROLET -- SPARE PARTS LIST -- ARMY SPECIAL VEHICLES



C-30, C-60S, C-60L

THE ABOVE ILLUSTRATION SHOWS A THREE-QUARTER FRONT VIEW OF THE MODEL C-60L (3 TON 4x4 LORRY), EQUIPPED WITH A GENERAL SERVICE BODY OPTION.

THE MODEL C-60S (3 TON 4x4 LORRY) IS SIMILAR TO THE C-60L, EXCEPT FOR THE DIFFERENCES IN WHEEL BASE, THE C-60L HAVING A 158" WHEELBASE AND THE C-60S HAVING 134" WHEELBASE.

THE MODEL C-30 (30 CWT. 4x4) HAS A 134" WHEELBASE AND IS SIMILAR TO THE C-60S EXCEPT FOR THE LOAD CAPACITIES. THE C-60S IS EQUIPPED WITH ADDITIONAL REAR SPRING LEAVES TO ALLOW FOR A GREATER LOAD.

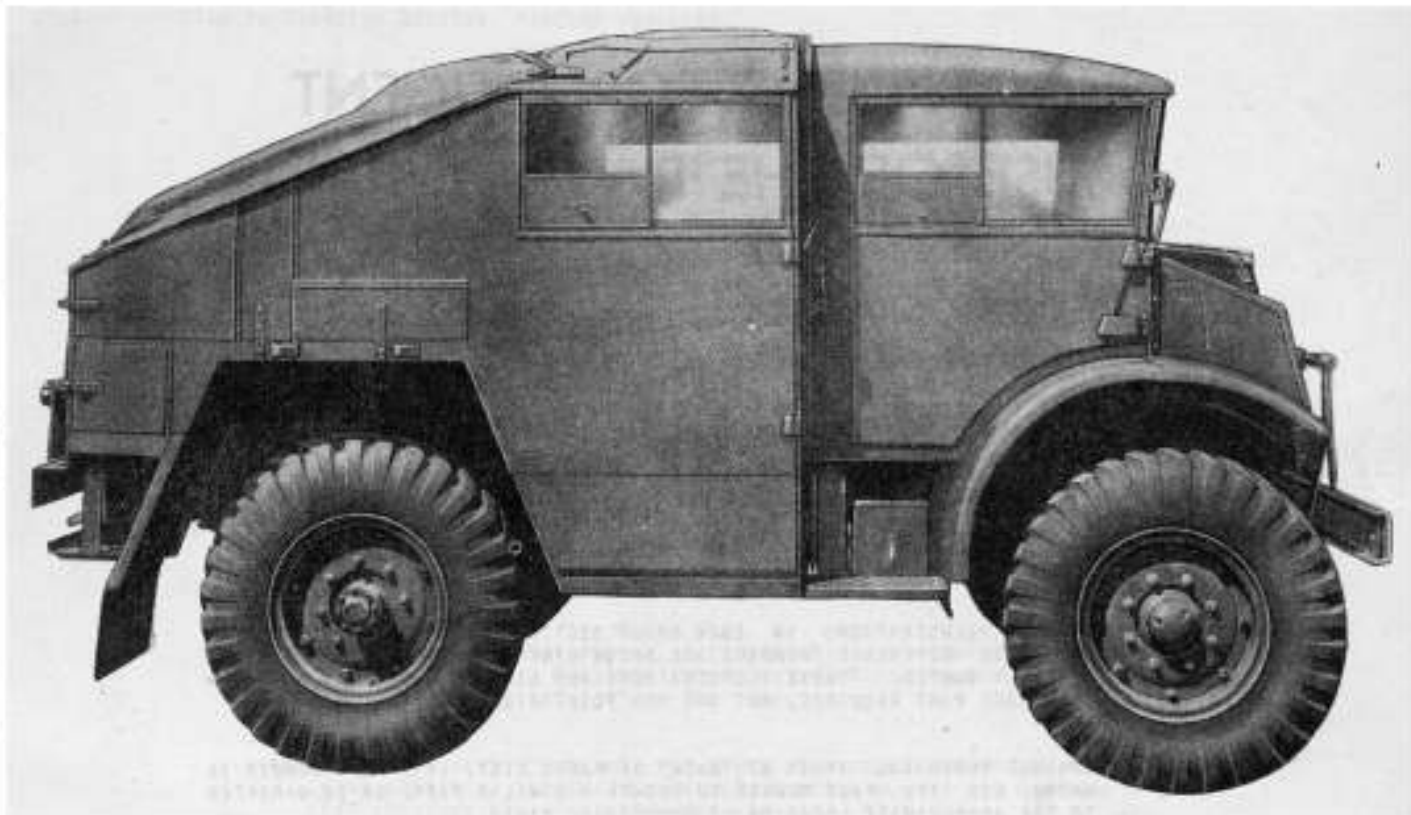
THE VARIOUS BODY OPTIONS AVAILABLE WITH EACH MODEL ARE AS FOLLOWS:

C-30 --OFFICE AND LIGHT ANTI-AIRCRAFT TRACTOR.

C-60S--DUMP, GENERAL SERVICE, STORES AND WRECKER.

C-60L--DENTAL, GENERAL SERVICE, STORES, PETROL TANK, DISINFECTOR, WORKSHOP AND WRECKER.

CHEVROLET -- SPARE PARTS LIST -- ARMY SPECIAL VEHICLES



C-GT

THE ABOVE ILLUSTRATION SHOWS A MODEL C-GT (FIELD ARTILLERY TRACTOR 4x4) WHICH IS BUILT ON A 101" WHEELBASE CHASSIS.

A PORTEE BODY OPTION CAN BE USED ON THE C-GT CHASSIS.

CHEVROLET -- SPARE PARTS LIST -- ARMY SPECIAL VEHICLES

SUGGESTIONS FOR EFFICIENT USE OF THE PARTS LIST

TO LOCATE THE LISTING OF A PART, REFER TO THE PARTS LIST UNDER THE GROUP NUMBER IDENTIFYING IT, WHICH MAY BE DETERMINED BY USING ANY OF THE FOLLOWING THREE METHODS -

1. CONSULT ALPHABETICAL INDEX AT "FRONT" OF PARTS LIST, WHICH LISTS PARTS BY NOUN AND DESCRIPTIVE NAMES AND REFERS TO THE PAGE NUMBER WHERE ALL PARTS OF SIMILAR KIND MAY BE FOUND. IF NAME OF DESIRED PART IS NOT READILY FOUND IN THE INDEX, A CORRELATED PART NAME WILL SUGGEST APPROXIMATE LOCATION.
2. CONSULT ILLUSTRATIONS IN EACH GROUP SECTION, ON WHICH GROUP NUMBERS OR PLATE REFERENCE NUMBERS ARE SHOWN DIRECTING YOU TO THE PART OR ASSEMBLY WANTED. THESE ILLUSTRATIONS AND LINE DRAWINGS MAY NOT SHOW THE EXACT PART REQUIRED, BUT ARE FOR IDENTIFICATION PURPOSES.
3. CONSULT NUMERICAL INDEX AT "BACK" OF PARTS LIST, IF A PART NUMBER IS KNOWN, USE ITS PAGE NUMBER TO LOCATE A SIMILAR PART, OR BE DIRECTED TO THE APPROXIMATE LOCATION OF CORRELATED PARTS.

THE NUMERICAL INDEX SHOWS ALL SERVICE PART NUMBERS IN CONSECUTIVE ORDER.

THE GROUP SYSTEM OF LISTING PARTS, BRIEFLY, IS AS FOLLOWS -

MAIN UNITS OF THE CAR ARE IDENTIFIED BY THE NUMERAL PRECEDING THE DECIMAL, I.E.

ENGINE.....	0.-
COOLING AND OILING.....	1.-
ELECTRICAL.....	2.-
FUEL SYSTEM.....	3.-
ETC. (See thumb index on first title page)	

INDIVIDUAL PARTS ARE ASSIGNED A GROUP NUMBER, THE FIRST NUMERAL IDENTIFYING THE MAIN UNIT WITH WHICH IT IS AFFILIATED, AND FOLLOWING THE DECIMAL IS THE SUB-GROUP NUMBER UNDER WHICH ALL PARTS OF THE SAME NAME AND FUNCTION ARE LISTED. FOR INSTANCE: GROUP 0.033: "0" INDICATES THAT IS AN ENGINE PART. ".033" IS THE LOCATION WHERE ALL PART NUMBERS OF CYLINDER BLOCKS NOW BEING SERVICED MAY BE FOUND.

ALL ILLUSTRATIONS HAVE PLATE NUMBERS. PARTS WHICH ARE ILLUSTRATED SHOW THE PLATE NUMBER IN A COLUMN FOLLOWING THE GROUP NUMBER. ON SPECIAL PARTS PECULIAR TO D.N.D. VEHICLES ON WHICH GROUP NUMBERS ARE NOT AVAILABLE, THE ITEM NUMBER IS ALSO SHOWN, I.E. 20-3 MEANS THE PART IS SHOWN ON PLATE NUMBER 20, ITEM NUMBER 3.

CHEVROLET -- SPARE PARTS LIST -- ARMY SPECIAL VEHICLES

AN ASTERISK (*) PRECEDING A PART NUMBER DENOTES THAT THE PART IS PECULIAR TO CANADIAN MILITARY PATTERN VEHICLES.

INSTRUCTIONS FOR ORDERING PARTS

ALWAYS GIVE PART NUMBER, NAME AND MODEL OF EACH PART ORDERED.

THE NUMBERS SHOWN ON THE ILLUSTRATIONS ARE FOR REFERENCE PURPOSES ONLY. AFTER IDENTIFYING THE PART REQUIRED REFER TO THE LIST OF PARTS AND ORDER BY PART NUMBER AND DESCRIPTION.

"RIGHT" AND "LEFT" DESCRIPTIONS

THE DESIGNATION "RIGHT" AND "LEFT" AS USED IN THIS PARTS LIST ARE DETERMINED FROM THE DRIVER'S POSITION.

UNIDENTIFIED PARTS

IF YOU CANNOT IDENTIFY THE PART REQUIRED, BY PART NUMBER AND DESCRIPTION, USE ONE OF TWO ALTERNATIVES:

- A. SUBMIT THE OLD PART PROPERLY TAGGED WITH AS COMPLETE A DESCRIPTION OF THE ITEM AS POSSIBLE INCLUDING THE MODEL NUMBER. ALSO INDICATE THE LOCATION OF THE PART ON THE VEHICLE.
- B. FURNISH A SKETCH SHOWING THE SHAPE AND APPROXIMATE DIMENSIONS. ALSO GIVE COMPLETE INFORMATION INCLUDING MODEL NUMBER AND MENTION OR DRAW THE LOCATION OF THE PART ON THE VEHICLE.

WHENEVER IN DOUBT ABOUT THE PARTS REQUIRED, GIVE THE CHASSIS SERIAL NUMBER WHICH IS SHOWN ON A PLATE (ILLUSTRATED BELOW) LOCATED ON THE RIGHT SIDE OF THE ENGINE ENCLOSURE, IN THE CAB ON FIRST JOBS, AND LOCATED ON TOP OF INSTRUMENT PANEL ON LATER JOBS.

GENERAL MOTORS OF CANADA LTD. OSHAWA, CANADA	
CHASSIS MODEL	C-60448 - M - W
CAB MODEL	13
CHASSIS SERIAL	2844300960
ENGINE SERIAL	XR3678541
ORDER No.	SPL/MECH - 2037 (4x4)
DATE OF MFG.	MCH. 23 1942

CHEVROLET -- SPARE PARTS LIST -- ARMY SPECIAL VEHICLES

ALPHABETICAL INDEX

A	Page	C (Cont'd)	Page
ACCELERATOR CONTROL.....	67	CASE, transfer.....	86
ADAPTER, speedometer.....	82	CHAINS, tire.....	231
AIR CLEANER.....	66	CHOKE CONTROL.....	67
AIR CLEANER, transfer case.....	87	CLEVIS, front towing.....	195
AMMETER.....	48	CLIPS, spring leaf.....	213
ARM, steering.....	165	CLUTCH.....	16
ARM, valve rocker.....	11	CLUTCH RELEASE.....	15
AXLE, front.....	162	COIL, ignition.....	36
AXLE, rear.....	145	CONDENSERS, radio.....	51
		CONNECTING ROD.....	13
B		CONNECTING ROD, steering.....	188
BAFFLES, radiator.....	26	CONNECTOR, valve rocker shaft oil.....	32
BALANCER, crankshaft.....	14	CORE, radiator.....	22
BATTERY.....	40	COUNTERSHAFT AND GEARS.....	85
BEARINGS, crankshaft main.....	8	COUPLING, trailer.....	133
BEARINGS, differential - rear axle.....	154	COVER, crankcase - front end.....	8
BEARINGS, pinion - front axle.....	173	COVER, power take-off.....	85
BEARINGS, pinion - rear axle.....	148	COVER, radiator grille.....	21
BEARING, propeller shaft centre.....	148	COVER, tie rod dust.....	165
BEARINGS, rear wheel.....	161	COVER, transmission.....	81
BELT, fan.....	20	COVER, valve rocker.....	11
BLOCK, cylinder.....	7	CRANKSHAFT.....	14
BOARD, running.....	226	CRANK, starting.....	9
BOLTS, body hold down.....	239	CYLINDER BLOCK.....	7
BOLTS, spring centre.....	212	CYLINDER, brake main.....	116
BONDING STRAPS.....	49	CYLINDER HEAD.....	9
BOX, battery.....	42	CYLINDERS, wheel.....	119
BRACKET, front license.....	215		
BRACKET, front spring.....	196	D	
BRACKET, starting crank.....	195	DEFROSTER.....	244
BRACKET, steering gear frame.....	198	DIFFERENTIAL & CARRIER, front.....	172
BRACKET, fuel tank.....	63	DIFFERENTIAL & CARRIER, rear.....	152
BRACKET, headlamp.....	58	DIFFERENTIAL CASE, rear axle.....	153
BRACKET, transfer case support.....	97	DISTRIBUTOR.....	45
BRAKE FLUID.....	121	DISTRIBUTOR, oil.....	31
BRAKES, front.....	135	DRUM, brake.....	158
BRAKES, rear.....	135		
BRAKE PEDAL.....	115	E	
BRAKE, propeller shaft hand.....	130	ENDS, steering - front axle.....	174
BRAKE, vacuum power.....	124	ENGINE.....	6
BRAKE, winch.....	106	ENGINE MOUNTING.....	6
BUMPER, clutch pedal.....	240		
BUMPER, front.....	217	F	
BUMPER, tail gate.....	240	FAN.....	20
		FAN, generator.....	37
C		FENDER, front.....	221
CABLES, battery.....	40	FILTER, fuel.....	76
CABLES, brake.....	122	FILTER, oil.....	31
CABLE, winch.....	110	FITTINGS, oil pipe.....	28
CAMSHAFT.....	12	FLANGE, drive pinion - front axle.....	173
CAP, crankcase ventilator.....	28	FLANGE, propeller shaft - front.....	83
CAP, front hub.....	161	FLANGES, propeller shaft.....	154
CARBURETOR.....	72	FLANGES, transfer case propeller shaft....	96
CARRIER, front axle differential.....	172	FLUID, brake.....	121
CARRIER, rear axle differential.....	152	FLUID, shock absorber.....	206
CARRIER, transfer case declutch.....	94	FLYWHEEL.....	14
CARRIER, tire.....	216	FORK, Transfer case gear.....	95
CASE, differential - rear axle.....	153	FRAME.....	190
CASE, transmission.....	81		