

ARMY SERVICE FORCES CATALOG **ORD 3** SNL G-1

RESTRICTED

ORDNANCE SUPPLY CATALOG

Group G

(Standard Nomenclature List No. G-1)

Major Items of Automotive and Semi-Automotive Vehicles (Includes Bicycles)

(Supersedes SNL G-1, dated 7 December 1943.)

RESTRICTED—DISSEMINATION OF RESTRICTED MATTER—*The information contained in restricted documents and the essential characteristics of restricted materiel may be given to any person known to be in the service of the United States, and to persons of undoubted loyalty and discretion who are cooperating in Government work, but will not be communicated to the public or to the press except by authorized military public relations agencies. (See also paragraph 18 b, AR 380-5, 28 September 1942.)*

For full information relative to Standard Nomenclature Lists, the procedure followed and the principles employed in their compilation, together with the purposes and uses thereof, see the Introduction to the Ordnance Catalog (ORD 1 IOC), the Ordnance Provision System Regulations (OPSR) which are now published in OFSB 1-1, and the Ordnance Publications for Supply Index (ORD 2 OPSI).

Major items, the storage and issue of which are the responsibility of the Ordnance Department, are listed in Section 1.

Major items, the storage and issue of which are the responsibility of other Technical Services, but for which the maintenance and/or the storage and issue of maintenance parts, Ordnance is partially responsible, are listed in Section 2.

DISTRIBUTION: Ordnance organizations, establishments and any interested personnel.

Headquarters, Army Service Forces, 26 April 1944

CONTENTS

Headquarters, Army Service Forces,
Washington 25, D. C., 26 April 1944.

Army Service Forces Ordnance Supply Catalog, ORD 3 SNL G-1, Major Items of Automotive and Semi-Automotive Vehicles (Includes Bicycles) has been prepared under the supervision of the Chief of Ordnance, and is published for the information and guidance of all concerned.

[SPX 400.152 (26 Apr 44)]

By command of Lieutenant General SOMERVELL:

W. D. STYER,
Major General, General Staff Corps,
Chief of Staff.

OFFICIAL:

J. A. ULIO,
Major General,
The Adjutant General.

CONTENTS

	Page
LIST OF FIGURES.....	2
MAJOR ITEMS:	
Section 1.....	7
Section 2.....	30
NOTES.....	34
MANUFACTURERS' SYMBOLS.....	34
USE OF PRICES.....	34

LIST OF FIGURES

Figure No.	Title	Page
1	Ambulance, 1/2-ton, 4 x 4 (Dodge).....	35
2	Ambulance, 3/4-ton, 4 x 2 (Packard).....	35
3	Ambulance, 3/4-ton, 4 x 4 (Dodge).....	36
4	Ambulance, 1 1/2-ton, 4 x 2 (Chevrolet).....	36
5	Bus, 15-Passenger, Converted Type (Chevrolet).....	36
6	Car, 5-Passenger, Light Sedan (Ford).....	37
7	Car, 5-Passenger, Sedan (Plymouth).....	37
8	Car, 5-Passenger, Light Sedan, 4-Door (Chevrolet).....	38
9	Car, 5-Passenger, Medium Sedan (Packard).....	38
10	Car, Armored, T17.....	39
11	Car, Armored, T17E1.....	39
12	Car, Armored, T17E2.....	40
13	Car, Armored, T18E2.....	40
14	Car, Armored, Light, M8.....	41

LIST OF FIGURES (Cont'd)

Figure No.	Title	Page
15	Car, Armored, Utility, M20.....	41
16	Car, Half-Track, M2.....	42
17	Car, Half-Track, M2A1.....	42
18	Car, Half-Track, M9.....	43
19	Car, Half-Track, M9A1.....	44
20	Car, Scout, M3A1.....	44
21	Carriage, Motor, 3-inch Gun, M10.....	45
22	Carriage, Motor, 3-inch Gun, M10A1.....	45
23	Carriage, Motor, 37-mm Gun, M6.....	46
24	Carriage, Motor, 57-mm Gun, T48.....	46
25	Carriage, Motor, 75-mm Gun, M3 and M3A1.....	47
26	Semitrailer, 6-ton Payload, 10-ton Gross, Laundry, Stake, Van (Quartermaster).....	47
27	Carriage, Motor, 75-mm Howitzer, M8.....	48
28	Carriage, Motor, 75-mm Howitzer, T30.....	48
29	Carriage, Motor, 76-mm Gun, M18 (T70).....	49
30	Carriage, Motor, 105-mm Howitzer, M7.....	49
31	Carriage, Motor, 105-mm Howitzer, T19.....	50
32	Carriage, Motor, 155-mm Gun, M12.....	50
33	Carriage, Motor, Multiple Gun, M13.....	51
34	Carriage, Motor, Multiple Gun, M14.....	51
35	Carriage, Motor, Multiple Gun, M15.....	52
36	Carriage, Motor, Combination Gun, M15A1.....	52
37	Carriage, Motor, Multiple Gun, M16 and M17.....	53
38	Carrier, 81-mm Mortar, Half-Track, M4.....	53
39	Truck, ½-ton, 4 x 2, Canopy Express (Chevrolet).....	54
40	Carrier, 81-mm Mortar, Half-Track, M4A1.....	54
41	Carrier, 81-mm Mortar, Half-Track, M21.....	54
42	Carrier, Cargo, M28.....	55
43	Carrier, Cargo, M30 (T14).....	56
44	Carrier, Personnel, Half-Track, M3.....	56
45	Carrier, Personnel, Half-Track, M3A1.....	57
46	Carrier, Personnel, Half-Track, M5.....	57
47	Carrier, Personnel, Half-Track, M5A1.....	58
48	Carrier, Universal, T16.....	58
49	Crane, Truck Mounted, M2 (w/Trailer, Clamshell, M16) (for 240-mm Howitzer and 8-inch Gun Materiel).....	59
50	Motorcycle, Chain Drive (Indian).....	60
51	Truck, ½-ton, 4 x 2, Carryall (Chevrolet).....	60
52	Motorcycle, Chain Drive (Harley-Davidson).....	61
53	Motorcycle, Chain Drive, w/Sidecar (Indian Model 340).....	61
54	Motorcycle, Shaft Drive (Indian).....	62
55	Motorcycle, Shaft Drive (Indian).....	62
56	Scooter, Motor, 3-Wheel (Cushman Model 39).....	63
57	Semitrailer, 3-ton Payload, 6-ton Gross, 2-Wheel (2 dt), Van.....	63
58	Semitrailer, 3½-ton Payload, 2-Wheel (2 dt), Combination Stake and Platform.....	64
59	Semitrailer, 6-ton Payload, 10½-ton Gross, 2-Wheel (2 dt).....	64
60	Semitrailer, 7½-ton Payload, 12-ton Gross, 2-Wheel (2 dt), Low Bed, 1942-43 (Truck Engineering Corp.).....	65
61	Tank, Medium, M4A3.....	65

SNL G-1**LIST OF FIGURES (Cont'd)**

Figure No.	Title	Page
62	Tank, Medium, M4A4.....	66
63	Tank, Medium, M4A6.....	66
64	Tank, Medium, T23.....	67
65	Tank, Heavy, M6.....	67
66	Tank, Heavy, M6A1.....	68
67	Tank, Heavy, T1E1.....	68
68	Tank, Light, M3.....	69
69	Tank, Light, M3A1.....	69
70	Tank, Light, M3A3.....	70
71	Tank, Light, M5.....	70
72	Tank, Light, M5A1.....	71
73	Tank, Light, T9E1.....	71
74	Tank, Light, T16.....	72
75	Tank, Medium, M3.....	72
76	Tank, Medium, M3A1.....	73
77	Tank, Medium, M3A2.....	73
78	Tank, Medium, M3A3.....	74
79	Tank, Medium, M3A4.....	74
80	Tank, Medium, M3A5.....	75
81	Tank, Medium, M4.....	75
82	Tank, Medium, M4 (105-mm Howitzer).....	76
83	Tank, Medium, M4A1.....	76
84	Tank, Medium, M4A2.....	77
85	Trailer, ¼-ton Payload, 2-Wheel, Cargo (Willys-Overland).....	77
86	Trailer, ½-ton Payload, 2-Wheel, Public Address, Van (Streich).....	78
87	Trailer, 1-ton Payload, 2-Wheel, Cargo.....	78
88	Trailer, 1-ton Payload, 2-Wheel, Water Tank, 250 Gal.....	79
89	Trailer, 6-ton T23E2.....	79
90	Trailer, Armored, M8 (John Deere).....	80
91	Trailer, Athey, 6-ton, BT898-1.....	80
92	Trailer, Athey, 6-ton, BT898-4.....	81
93	Trailer, Athey, 20-ton, ET1076-1.....	81
94	Trailer, Bomb, M5.....	82
95	Trailer, Heavy Duty, 14-ton (Winter-Weiss).....	82
96	Trailer, Tractor Crane.....	83
97	Truck, ¼-ton, 4 x 4, Amphibian (Ford GPA).....	83
98	Truck, ¼-ton, 4 x 4, Command Reconnaissance.....	83
99	Tractor, High-Speed, 13-ton, M5 (International Harvester).....	84
100	Tractor, High-Speed, 18-ton, M4 (Allis-Chalmers).....	84
101	Tractor, High-Speed, 38-ton, M6 (Allis-Chalmers).....	85
102	Tractor, Light, Wheeled, Industrial Type (Allis-Chalmers).....	85
103	Truck, ½-ton, 4 x 4, Radio (Dodge).....	86
104	Truck, ½-ton, 4 x 4, Carryall (Dodge).....	86
105	Truck, ½-ton, 4 x 4, Command Reconnaissance (Dodge).....	87
106	Truck, ½-ton, 4 x 4, Emergency Repair (Dodge).....	87
107	Truck, ½-ton, 4 x 4, Panel (Dodge).....	88
108	Truck, ½-ton, 4 x 4, Pickup (Dodge).....	88
109	Truck, ½-ton, 4 x 4, Weapons Carrier (Dodge).....	89
110	Truck, 6-ton, 6 x 6, Closed Cab, Cargo (White).....	89
111	Truck, 1½-ton, 4 x 2 (2 dt), Cargo (Ford).....	90

LIST OF FIGURES (Cont'd)

Figure No.	Title	Page
112	Truck, 1½-ton, 4 x 4, C.O.E. (GMC).....	90
113	Truck, ¾-ton, 4 x 2, Pickup (Chevrolet).....	91
114	Truck, ¾-ton, 4 x 2, Panel Delivery (Chevrolet).....	91
115	Truck, 1½-ton, 4 x 2, Stake and Platform (Chevrolet).....	92
116	Truck, 1½-ton, 4 x 2, Canopy Express (Chevrolet).....	92
117	Truck, 1½-ton, 4 x 2, Dump (Chevrolet).....	93
118	Truck, 1½-ton, 4 x 2, Panel Delivery (Chevrolet).....	93
119	Truck, 1½-ton, 4 x 2, Pickup (Chevrolet).....	94
120	Truck, 1½-ton, 6 x 6, Personnel and Cargo, w/Winch (Dodge).....	94
121	Truck, 2½-ton, 4 x 2, Cargo (GMC).....	95
122	Truck, 2½-ton, 4 x 4 (Autocar U-4044).....	95
123	Truck, 2½-ton, 6 x 6, Fuel Tank (750 gal.).....	96
124	Truck, 2½-ton, 6 x 6, Amphibian (GMC DUKW-353).....	96
125	Truck, Ordnance Maintenance.....	97
126	Truck, 4-ton, 4 x 4, Cargo (Four Wheel Drive Co. HAR-1).....	97
127	Truck, 4- to 5-ton, 4 x 4, C.O.E., Tractor (Autocar).....	98
128	Truck, 5-ton, 4 x 2, Comb., Stake and Platform (GMC).....	98
129	Truck, 5- to 6-ton, 4 x 4, C.O.E., Tractor (Autocar).....	99
130	Truck, 5- to 6-ton, 4 x 4, C.O.E., Tractor (Mack).....	99
131	Truck, 6-ton, 6 x 6, Prime Mover (Corbitt 50 SD-6).....	100
132	Truck, 6-ton, 6 x 6, Cargo (Mack NM-5, 1942).....	100
133	Truck, 7½-ton, 6 x 6, Prime Mover (Mack No. 2).....	101
134	Truck, 7½-ton, 6 x 6, Tractor Fuel Servicing (Army Air Force Model F-1).....	101
135	Truck, 8-ton, 6 x 4 (4 dt), Tractor (Corbitt).....	102
136	Truck, Artillery Repair, M1.....	102
137	Truck, Bomb Lift, M1.....	103
138	Truck, Bomb Service, M1 (Ford 19Y).....	103
139	Truck, Bomb Service, M6 (Chevrolet).....	104
140	Truck, Emergency Repair, M1.....	104
141	Truck, Half-Track, M2.....	105
142	Truck, Lift, M22 (T21) (Weaver).....	105
143	Truck, Tractor, M26 (Pacific Car and Foundry).....	106
144	Semitrailer, 40-ton, Tank Transporter, M15.....	106
145	Truck, 12-ton, 6 x 4 (4 dt), M20 (Diamond-T 980-981).....	107
146	Trailer, 45-ton, 12-Wheel (12 dt), M9 (Fruehauf Trailer Co.).....	107
147	Truck, Wrecking, Heavy, M1 (Ward La France and Kenworth)....	107
148	Vehicle, Landing, Tracked (Armored), Mk. I, LVT (A) (1) (w/Turret)	108
149	Vehicle, Landing, Tracked (Armored), Army Type Mk. II, LVT (A) (2).....	109
150	Vehicle, Landing, Tracked (Unarmored), Mk. I, LVT (1).....	109
151	Vehicle, Landing, Tracked (Unarmored), Mk. II, LVT (2).....	109
152	Vehicle, Tank Recovery, M31 (T2).....	110
153	Semitrailer, 6-ton Payload, 10-ton Gross, 2-Wheel (2 dt), (Carter)..	110
154	Semitrailer, 6-ton Payload, 10-ton Gross, 2-Wheel (2 dt), 1943 (Gerstenslager) (Quartermaster).....	111
155	Semitrailer, 6-ton Payload, 10-ton Gross, 2-Wheel (2 dt), 1943 (Gerstenslager Model W-8120) (Quartermaster).....	111
156	Semitrailer, 6-ton Payload, 10-ton Gross, 2-Wheel (2 dt), Sterilization and Bath, 1942 (Strick) (Quartermaster).....	112
157	Trailer, 1-ton Gross, 2-Wheel (2 dt), Communications (Signal Corps)	112

SNL G-1

LIST OF FIGURES (Cont'd)

Figure No.	Title	Page
158	Trailer, Telephone Cable Splicer, ¼-ton, K38 (Signal Corps).....	113
159	Trailer, Telephone Construction and Combination Cable Hauler, 5-ton, K37 (Highway) (Signal Corps).....	113
160	Trailer, Telephone Construction and Pole Hauling, 2-ton, K-36 (Signal Corps).....	114
161	Truck, 2½-ton, 4 x 4 (Autocar) (Army Air Force).....	114
162	Truck, 4-ton, 4 x 4, Shovel Crane, w/Trailer (Coleman Motor Co.) (Corps of Engineers).....	114
163	Truck, 5- to 6-ton, 4 x 4, C.O.E., Van (Autocar) (Signal Corps).....	115
164	Truck, 6-ton, 6 x 6, Bridge Ponton w/Winch (Corps of Engineers) ..	115
165	Truck, 6-ton, 6 x 6, Chassis w/Winch, w/Quickway Crane (Brockway) (Corps of Engineers).....	116
166	Truck, 1½-ton, 4 x 4, Cargo (Chevrolet).....	116
167	Truck, 1½-ton, 4 x 4, Combination Stake and Platform, 15 ft. (Chevrolet).....	117
168	Truck, 1½-ton, 4 x 4, Combination Stake and Platform, C.O.E. (Chevrolet).....	117
169	Truck, 1½-ton, 4 x 4, Dump (Chevrolet).....	118
170	Truck, 1½-ton, 4 x 4, Earth Borer and Pole Setter (Chevrolet) (Signal Corps).....	118
171	Truck, 1½-ton, 4 x 4, Airfield Service (Chevrolet) (Army Air Force)	119
172	Truck, 1½-ton, 4 x 4, Panel Delivery (Chevrolet).....	119
173	Truck, 1½-ton, 4 x 4, Tractor (Chevrolet).....	120
174	Truck, 1½-ton, 4 x 4, Airfield Crash (Chevrolet) (Corps of Engineers)	120
175	Truck, 4-ton, 6 x 6, Cargo, L.W.B. (Diamond T).....	121
176	Truck, 4-ton, 6 x 6, Cargo, S.W.B. (Diamond T).....	121
177	Truck, 4-ton, 6 x 6, Crane, Swinging Boom, w/Winch (Diamond T) (Chemical Warfare Service).....	122
178	Truck, 4-ton, 6 x 6, Water Distributor, 1000 gal. (Diamond T) (Corps of Engineers).....	122
179	Truck, 4-ton, 6 x 6, Dump (Diamond T).....	123
180	Truck, 4-ton, 6 x 6, Map Reproduction Equipment, L.W.B. (Diamond T) (Corps of Engineers).....	123
181	Truck, 4-ton, 6 x 6, Wrecker (Diamond T).....	124
182	Truck, 4-ton, 6 x 6, Bituminous Supply Tank, 800 gal. (Diamond T) (Corps of Engineers) ..	124
183	Truck, ¾-ton, 4 x 4, Carryall (Dodge).....	125
184	Truck, ¾-ton, 4 x 4, Command Reconnaissance (Dodge).....	125
185	Truck, ¾-ton, 4 x 4, Emergency Repair (Dodge).....	126
186	Truck, ¾-ton, 4 x 4, Weapons Carrier, w/Winch (Dodge).....	126
187	Truck, ¾-ton, 4 x 4, Command Reconnaissance (Dodge).....	127
188	Truck, 2½-ton, 4 x 2 (2 dt), Comb. Stake and Platform (International Harvester Model K-7).....	127
189	Truck, 2½-ton, 4 x 2 (2 dt), Dump (International Harvester).....	128
190	Truck, ½-ton, 4 x 2, Panel (Chevrolet).....	128

SNL G-1



Figure 1 — Ambulance, 1/2-ton, 4 x 4 (Dodge)



Figure 2 — Ambulance, 3/4-ton, 4 x 2 (Packard)

SNL G-1

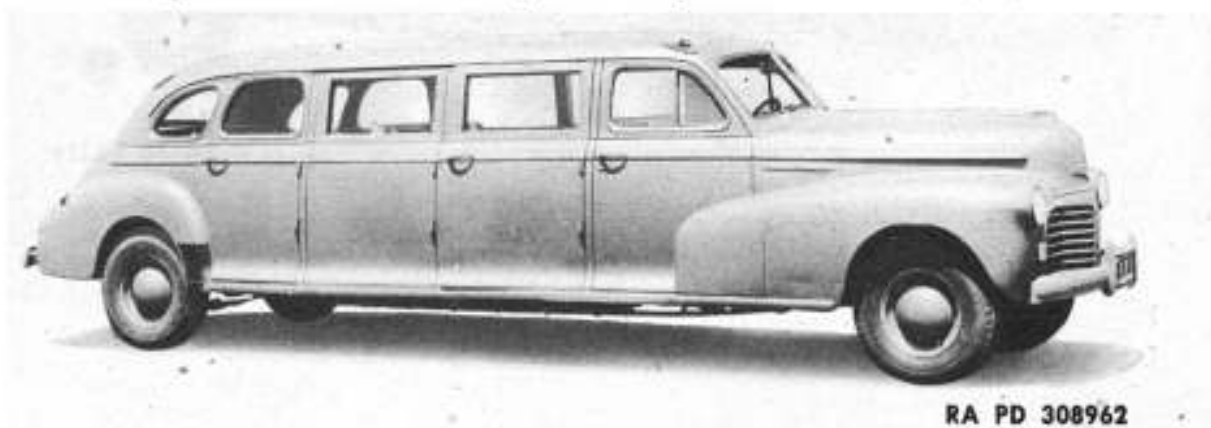


RA PD 66315

Figure 3 — Ambulance, 3/4-ton, 4 x 4 (Dodge)



Figure 4 — Ambulance, 1 1/2-ton, 4 x 2 (Chevrolet) RA PD 308965



RA PD 308962

Figure 5 — Bus, 15-Passenger, Converted Type (Chevrolet)

SNL G-1



Figure 6 – Car, 5-Passenger, Light Sedan (Ford)



Figure 7 – Car, 5-Passenger, Sedan (Plymouth)

SNL G-1



Figure 8 — Car, 5-Passenger, Light Sedan, 4-Door (Chevrolet)



Figure 9 — Car, 5-Passenger, Medium Sedan (Packard)