

# **MAINTENANCE MANUAL**

## **DODGE TRUCKS**

**3/4 TON, 4x4  
[CANADIAN]  
AIRPORTABLE  
WADE PROOFED**



**CHRYSLER CORPORATION OF CANADA, LIMITED**

# **TROPICAL MAINTENANCE SUPPLEMENT**



**A SURVEY OF  
POTENTIAL TROUBLES  
AND  
THEIR PREVENTION IN THE FIELD**

**Prepared By:—**

**ARMY ENGINEERING DESIGN BRANCH  
DEPARTMENT OF MUNITIONS AND SUPPLY  
OTTAWA, CANADA**

September 15, 1945.

**3/4 APT-D1**

**MAINTENANCE  
MANUAL  
FOR  
DODGE TRUCKS  
3/4 TON, 4 x 4  
(CANADIAN)  
AIRPORTABLE  
WADEPROOFED**

Changes and additions to the Maintenance Manual will be covered by Service Information Bulletins.

PREPARED UNDER THE DIRECTION

OF

THE DIRECTOR GENERAL OF ARMY ENGINEERING DESIGN  
OTTAWA — CANADA

CHRYSLER CORPORATION OF CANADA LIMITED

**SECTION INDEX**

NAME	SECTION
Model Data	<b>A</b>
Period Maintenance Including Preparation for Wading	<b>B</b>
Lubrication	<b>C</b>
Wheels and Tires	<b>D</b>
Brakes	<b>E</b>
Front Axle	<b>F</b>
Steering	<b>G</b>
Rear Axle and Drive Shaft	<b>H</b>
Springs and Shock Absorbers	<b>I</b>
Frame	<b>J</b>
Engine	<b>K</b>
Clutch	<b>L</b>
Transmission and Power Take-Off	<b>M</b>
Transfer Case	<b>N</b>
Winch	<b>O</b>
Cooling System	<b>P</b>
Fuel and Exhaust	<b>Q</b>
Electrical	<b>R</b>
Cab and Sheet Metal	<b>S</b>
Airportability	<b>T</b>
Maintenance Requirements	<b>U</b>
Specifications and Special Tool List	<b>V</b>

**WM-4146**  
CHRYSLER PART NO.

## FOREWORD

This Maintenance Manual is published primarily for the use of the mechanic and workshop personnel whose responsibility is to keep the vehicle in good mechanical condition.

It is not a text book for those who have not had previous shop experience and does not present instructions in elementary form. The manual contains practical and workable mechanical instructions adequately illustrated with "action" pictures and "exploded" views. The "Service Diagnosis" charts will also help the mechanic to analyze his problems before attempting a solution.

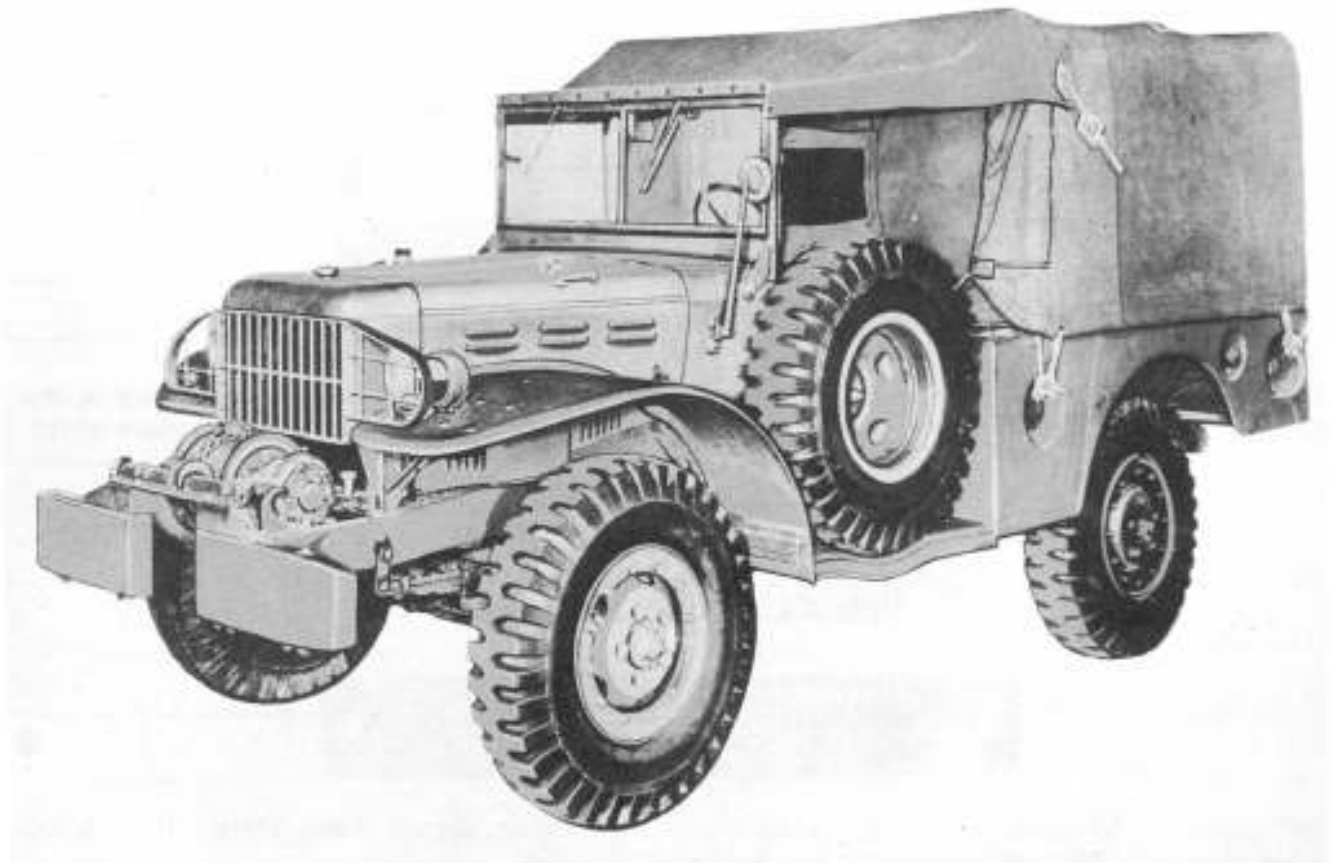
The Manual is arranged in lettered sections as shown in the Section Index. A separate Manual is published for the use of the vehicle operator containing "Operating and Maintenance Instructions" and minor repair details.

## PUBLICATIONS PLATE

To identify this MANUAL with the vehicles to which it applies a "PUBLICATION PLATE" as shown below is assembled to the vehicle panel. The correct DRIVER'S HANDBOOK and SPARE PARTS LIST are indicated in the same manner.

PUBLICATIONS APPLYING TO THIS VEHICLE	
<input type="radio"/> DRIVERS HANDBOOK	<input type="text"/>
<input type="radio"/> MAINTENANCE MANUAL	<input type="text"/>
<input type="radio"/> SPARE PARTS LISTS	<input type="text"/>

When making reference to a MANUAL, HANDBOOK, or PARTS LIST first determine that the IDENTIFYING SYMBOL corresponds to that stamped on the PUBLICATIONS PLATE.



The above illustration shows a left side view of the Dodge  $\frac{3}{4}$  Ton. 4x4. 98" Wheelbase Chassis equipped with General Service Body.

### CHASSIS RECORD NAME PLATE

<b>DODGE TRUCKS</b>	
MFD. BY CHRYSLER CORP. OF CANADA LTD.	
CHASSIS MODEL	D-150-150-15
CAB MODEL	21
CHASSIS SERIAL	<input type="text"/>
ENGINE SERIAL	<input type="text"/>
ORDER NO. S/M	2433
DATE OF MFG.	<input type="text"/>

The chassis record name plate shown above is stamped with all important data pertaining to the vehicle. It is important that serial and model numbers be quoted when ordering spare parts.

### VEHICLE MODEL PLATE

<b>VEHICLE MODEL</b>
D-150-150-15

The vehicle model plate shown is located above the Chassis Record Name Plate. In addition to the chassis model number it also gives body code symbols.

### DODGE VEHICLE PLATE

	SERIAL NO. <input type="text"/>	MODEL <input type="text"/>
	MAX. GROSS WEIGHT EXCEPT AS CONTROLLED BY TIRES, SPRINGS AND AUXILIARY EQUIP.	
	<input type="text"/>	
	WARRANTY VOID IF ABOVE WEIGHT IS EXCEEDED	
<b>DODGE TRUCKS</b>		
MFD. BY CHRYSLER CORPORATION OF CANADA LIMITED		

The plate illustrated above is the standard vehicle identification plate. It contains the vehicle serial number, the DODGE model number and the Maximum Gross Weight.







## SECTION B

# PERIOD MAINTENANCE

(Including Oil Changing)

The following paragraphs describe the maintenance jobs not regularly attended to by the driver in the Sixteen Tasks system. The lubrication diagram is shown in Section "C" and the recommended lubricants are listed on pages C-5, to C-7.

### AFTER THE FIRST 250 and 1,250 MILES

**ENGINE OIL**—On new and reconditioned engines change the oil after the first 250 miles and again after a further 1000 miles. Details of draining and subsequent changes are given in paragraph "Changing Engine Oil". (See Section "C" Lubrication.)

**CYLINDER HEAD**—Whenever an engine has been reconditioned, or the cylinder head has been removed for any other purpose, the cylinder head retaining screws should be tightened in the order shown in Fig. 1 Page K-1. Tighten all screws evenly with a suitable torque wrench to 65 to 70 foot lbs. A final tightening and checking of the tension should

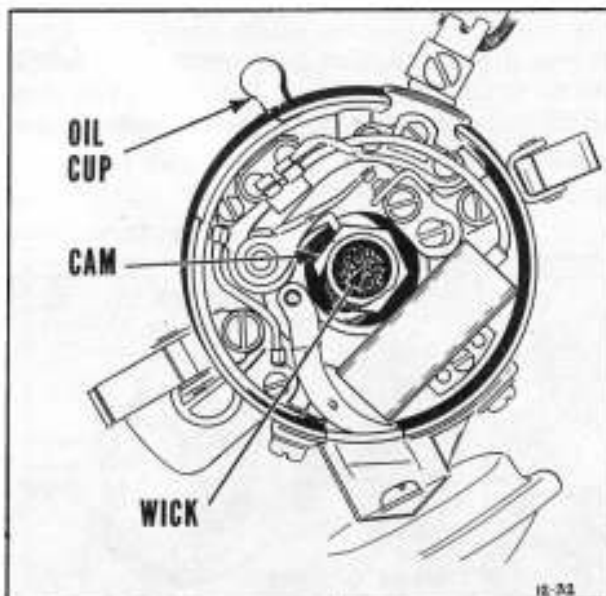


Fig. 1—Distributor

be made after the engine has been run for some time and is still warm.

### EVERY 1000 MILES

**DISTRIBUTOR**—Lubricate the distributor shaft every 1000 miles—five drops of seasonal engine oil in oil cup on side of distributor body, also two drops of oil on wick beneath the rotor. Add just a smear of vaseline to the cam. (Fig. 1)

**NOTE:**—On waterproofed vehicles the distributor is a sealed unit. Exercise care when removing the cap retaining screws and washers and the cap gasket.

**GENERATOR**—Lubricate generator bearings every 1000 miles—ten drops of seasonal engine oil in front and rear oil cups. (Fig. 2)

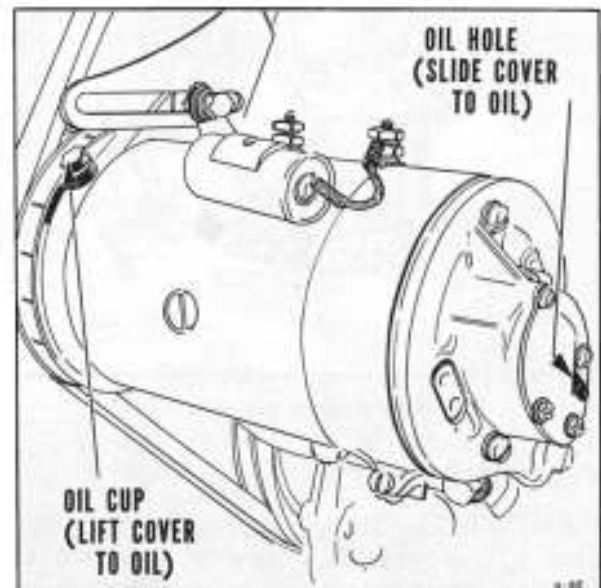


Fig. 2—Generator

**STARTER**—Lift oil cup cover and fill cup with a seasonal engine oil every 1000 miles. Lightly oil operating lever frictional points. (Fig. 3)

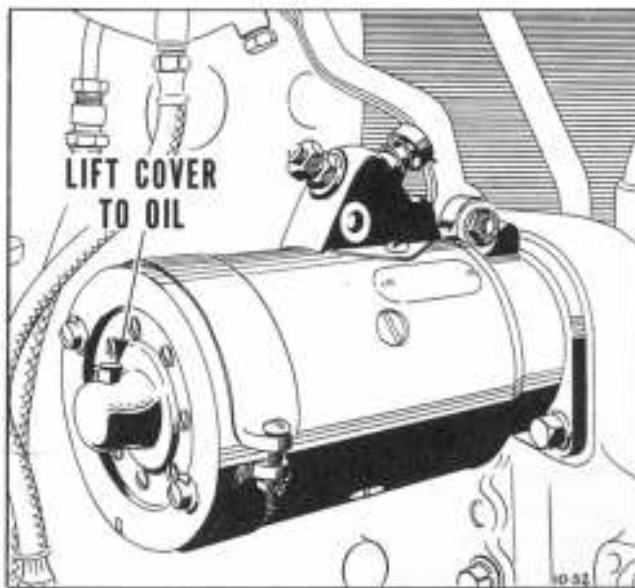


Fig. 3—Starter

### FRONT AXLE UNIVERSALS

Remove plug in bottom of each universal. Lubricate through fitting on top of universal until grease comes out of lower plug hole. (Fig. 4).

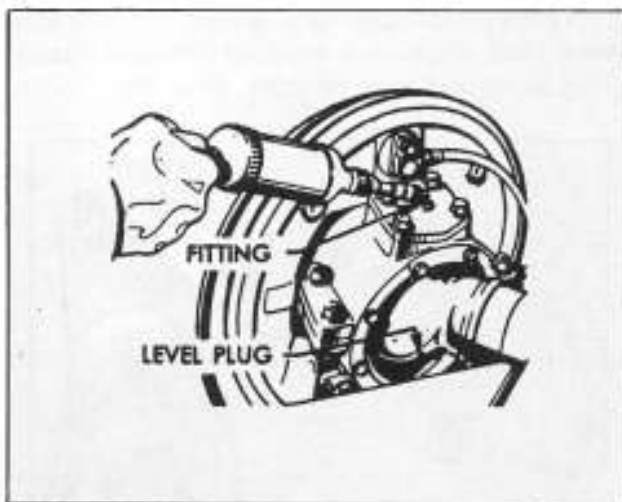


Fig. 4—Front Axle Ball Joint

### EVERY 2000 MILES

**ENGINE OIL**—Change regularly every 2000 miles. It is always advisable to drain the engine oil while the engine is at normal operating temperature. The oil will drain more completely when hot and will, therefore carry more of the foreign material and dirt away. Get under the vehicle and remove the drain plug (Fig. 5). Use the adjustable wrench to remove the plug. Allow the oil to drain thoroughly and replace the plug, making sure

that it is pulled up tight and the copper gasket is in place between the plug and the oil pan. The oil filter cartridge should be inspected at each oil change period and any sediment drained off. Replace cartridge if plugged.

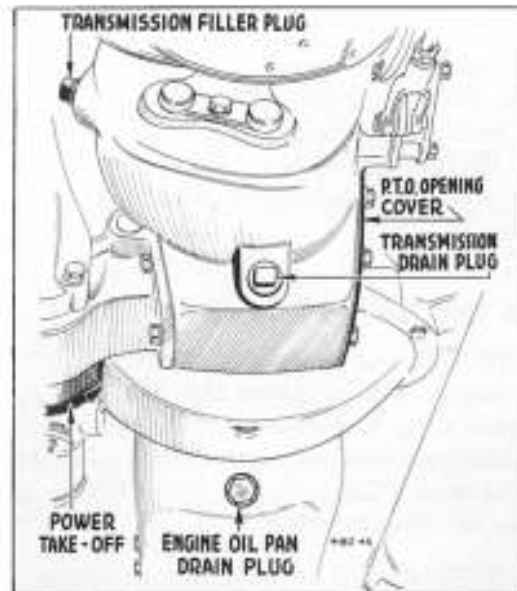


Fig. 5—Filler and Drain Plugs

### EVERY 5000 MILES

**TRANSMISSION**—The lubricant in the transmission is to be changed every 5,000 miles. This should be done whenever possible after a run, and the oil is still warm.

Remove drain and filler plugs and allow lubricant to drain thoroughly. Replace drain plug and fill to level of the filler plug. Replace filler plug. (Fig. 5).

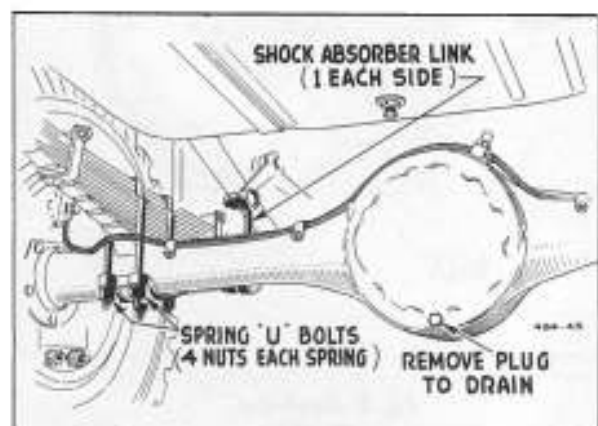


Fig. 6—Front and Rear Axle Housing