

MILITARY AND CIVILIAN
 YOUR EARLY DODGE AREA HEADQUARTERS
 • **DODGE TRUCKS ARE OUR SPECIALTY**
 WRITE OR CALL TODAY CONCERNING YOUR SPECIFIC NEEDS
VINTAGE POWER WAGONS
 502 South 7th Street, Fairfield, Iowa 52506 U.S.A.
 Phone 515-477-4665

**Master
 Parts List**
 - COVERING
DODGE TRUCKS
 BUILT FOR
UNITED STATES ARMY

**The Following Models Are Covered
 in This Book:**

1940 T202 1940 T203 1941 T204 1941 T205
 1941 T215 1941 T112 1941 T113 1941 T214
 1943 T223

FOR U. S. ARMY CONTRACTORS AND PURCHASERS - UNIFORM IDENTIFICATION AND SPECIFICATION CHARTS OF PARTS, ETC. - KRM

PAGE

GROUP INDEX

SEND EACH PAGE TO FIND ONE DESIRED

Engine	01
Clutch	02
Fuel	03
Exhaust	04
Cooling	05
Electrical	06
Transmission	07
Driveshafts	08
Front Axle	09
Rear Axle	10
Leaf Springs	11
Wheels, Tires, & Hubs	12
Steering	13
Body	14
Paint	15
Tools	16
Wrench	17
Power	18
Identification	19
Body	20
Leaf Springs	21
Bearing	22
Wheels	23

A SPECIAL MESSAGE • •

In this issue there is a dividing or index page between each group. This dividing page serves as an index to illustrations and parts by sub group in each major group.

The reference or key number of each part in an exploded view will also be found with enlarged picture of such part over its respective column on the parts specifying page.

All parts which are included in the service packages, sets, or kits are ear marked by the letter "K" in the numerical index.

The contents or bill of material of all service packages will be listed "in order of major groups and sub groups" in the Service Package Bill of Material Section.

~~All part~~ numbers which have been superseded are listed in the numerical index showing the superseding or current part number. All current numbers which supersede part numbers previously listed in the first edition TM10-1199 are indicated in the text of the book by this symbol (:). These current part numbers so indicated will be listed along with all previous supersedences which were listed in the first edition TM10-1199 in the "Parts Supersedence List" showing the current and the previous part numbers.

You will find it easy to use this book effectively, if you will spend a few brief moments to acquaint yourself with the way it has been planned. Turn to page "Finger Tip Information."

FINGER-TIP PARTS INFORMATION

PAGE NUMBERING

Roman numerals (I-II-III-IV-V) are used for all pages up to the start of group specifying information, and at that point pages are numbered consecutively in the usual manner.

BODY TYPES:

To make it easy for you to quickly identify any particular body type, all types of bodies with model symbols and contract numbers are shown on pages VI through XIX.

MODEL IDENTIFICATION AND SPECIFICATION CHART

Quickly converts sales symbols into Engineering symbols which are used for specifying parts for a particular truck model.

EXPLODED VIEWS OF MOST MAJOR GROUPS—

- (a) Shows parts in their relative position.
- (b) Each exploded view has an index of its own group. Each part carries a reference number which gives its correct name with its sub-group number and the number of page on which it is specified for particular model application.

SPECIFYING CHARTS

- (a) Set up in column form, except in cases where it proved more practical to give part numbers and name in exploded picture. The aim always—greatest speed and accuracy in specifying parts.
- (b) As far as possible parts are listed showing assemblies with their attaching parts (bolts-nuts) in the sequence of removal or replacement—otherwise attaching parts are listed in lower panel.
- (c) Where attaching parts are not pictured in sequence of removal, a reference or key letter is found directly under the name of the major part. You then go directly to the lower panel under this reference or key letter.

ALMOST EVERY PART PICTURED

- (a) Above each specifying column is a picture of the particular part for quick identification.
- (b) The majority of parts pictured above specifying column carry the reference number of the part shown in exploded view.
- (c) In cases where a type of part carries more than one part number and there are graphic differences in the parts, more than one part is pictured.
- (d) Illustrating each part at top of columns helps parts picker or mechanic in selecting correct parts. However, it is recommended that part numbers be specified from the columns and not from the picture. There are certain instances where types of parts have minor differences which would be important when specifying but not of sufficient importance to warrant more than one picture.
- (e) While it is impracticable to picture all parts in their relative size, this has been done wherever possible.

PARTS INTERCHANGEABILITY LIST

Specifying charts give at a glance—complete parts interchangeability.

ALPHABETICAL INDEX — Located in front of book.

Quick reference to any part by name is provided in the alphabetical index. This index shows the numbers of the sub-group and page on which the parts are listed.

NUMERICAL INDEX — Located in back of book.

Reference to any part number is provided in the numerical index. This index lists all parts in numerical sequence, also their Item Stock number, and shows the sub-group in which each part is listed—also list price, part number and name of vendor (where applicable) and all identifying symbols.

Instructions for Ordering Prime or Painted Sheet Metal Parts

Sheet metal parts which are indicated as "white" should be painted locally.

When local painting facilities are not available, prime or painted sheet metal parts may be ordered from Chrysler Corporation, Parts Division as follows:

To order primed parts specify "white" part number and in the description column on the parts order enter the "Prime Operation."

To order painted parts specify "white" part number and in the description column on the parts order enter the following: "Prime, Paint and Packing Operation." Also specify truck serial number.

PRIME FINISH AND SPECIAL PACKING OPERATIONS

Part No. Prime Operation	Description	Additional Net Price For Operation
830006	Front Fenders and Hood Top Panels.....	\$ 1.50
830007	Rear Fenders, Radiator Shells and Hood Halves.....	1.25
830010	Rear Wheel Shields (Per Shield), Radiator Air Scoop Pan, Radiator Grilles, Radiator Shell Panels, Running Boards, Running Board Splash Guards, Hood Side Panels, Body to Frame Splash Shields, Body Side Shields, Body to Rear Fender Splash Shields, Front Fender Splash Shield Assemblies, Fender Lower Grilles, Rear Bumper Stone Deflectors, Front Bumper Shields, Front Bumper End Plate.....	1.00

PRIME, PAINT AND SPECIAL PACKING OPERATIONS

Part No. Paint Operation	Description	Additional Net Price For Operation
830008	Front Fenders, Deck and Luggage Compartment Lids and Hood Top Panels.....	\$ 4.75
830009	Rear Fenders, Radiator Shells and Hood Halves.....	3.50
830011	Rear Wheel Shields (Per Shield), Wheels, Radiator Air Scoop Pan, Radiator Grilles, Radiator Shell Panels, Running Boards, Running Board Splash Guards, Hood Side Panels, Body to Frame Splash Shields, Body Side Shields, Body to Rear Fender Splash Shields, Front Fender Splash Shield Assemblies, Fender Lower Grilles, Rear Bumper Stone Deflectors, Front Bumper Shields, Front Bumper End Plate.....	2.00
830012	MISCELLANEOUS PARTS: Such as: Grille, Hood, Body or Fender Mouldings, Ornaments, Medallions, Escutcheons, Handles, or any other part of similar area.....	.50
830004	Doors.....	5.00
None	Cab (Painted).....	17.50
	Cab Shell (Painted).....	7.50
	Cab or Cab Shell (Crating Operation).....	7.50
	Crating Roof Panels	\$5.00 net, no discount.
	Crating Roof Repair Panels	\$3.00 net, no discount.

The above net charges, not subject to discount, will be added to the net price of the part when a finish other than white is desired.

Prices and specifications subject to change without notice.

VI

MODELS AND BODY TYPES

CLOSED CAB—NO BODY (1/2 ton)



USM-BT-1

LIST BELOW SHOWS TRUCK MODELS USING CLOSED CAB—NO BODY

Engineering Symbol	Sales Symbol	U. S. Government Contract No.	Individual Parts List No.	Technical Manual No.
T-211	WC-20	W-398-QM-8388	D-10034	—
T-215	WC-41	W-398-QM-10327	D-10252	10-1152
T-215	WC-41	W-398-QM-11244	D-10454	10-1152

CLOSED CAB—NO BODY (1 1/2 ton)



USM-BT-2

LIST BELOW SHOWS TRUCK MODELS USING CLOSED CAB—NO BODY

Engineering Symbol	Sales Symbol	U. S. Government Contract No.	Individual Parts List No.	Technical Manual No.
T-118	WF-31	W-398-QM-10616	D-10353	10-1156
T-118	WF-31	W-398-QM-12572	D-10501	10-1534

MODELS AND BODY TYPES

CLOSED CAB—CARGO BODY

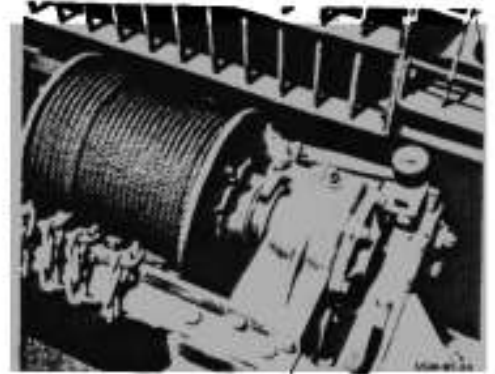


USM-BT-3

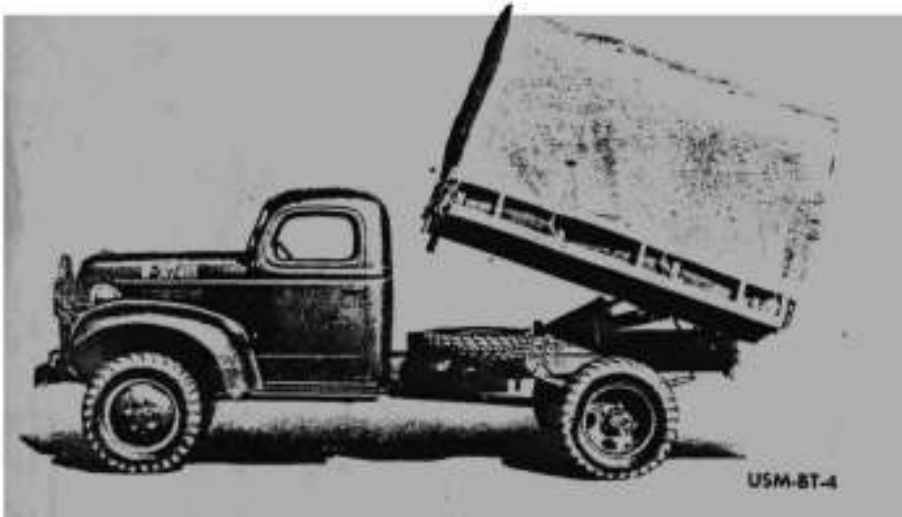
LIST BELOW SHOWS TRUCK MODELS WITH CARGO BODY

Engineering Symbol	Sales Symbol	U. S. Government Contract No.	Individual Parts List No.	Technical Manual No.
T-203	VF-401	W-398-QM-7471	D-8068	—
T-203	VF-404	W-398-QM-7813	D-8250	—
T-203	*VF-402	W-398-QM-7471	D-8068	—
T-203	*VF-405	W-398-QM-7813	D-8250	—

*These Models with Winch



CLOSED CAB—DUMP BODY



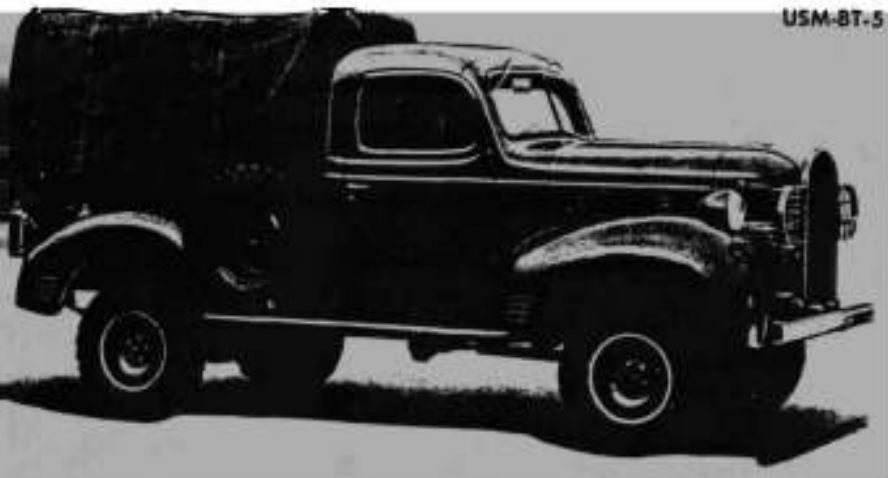
USM-BT-4

LIST BELOW SHOWS TRUCK MODELS WITH DUMP BODY

Engineering Symbol	Sales Symbol	U. S. Government Contract No.	Individual Parts List No.	Technical Manual No.
T-203	VF-406	W-398-QM-7813	D-8250	—
T-203	VF-403	W-398-QM-7471	D-8068	—

MODELS AND BODY TYPES

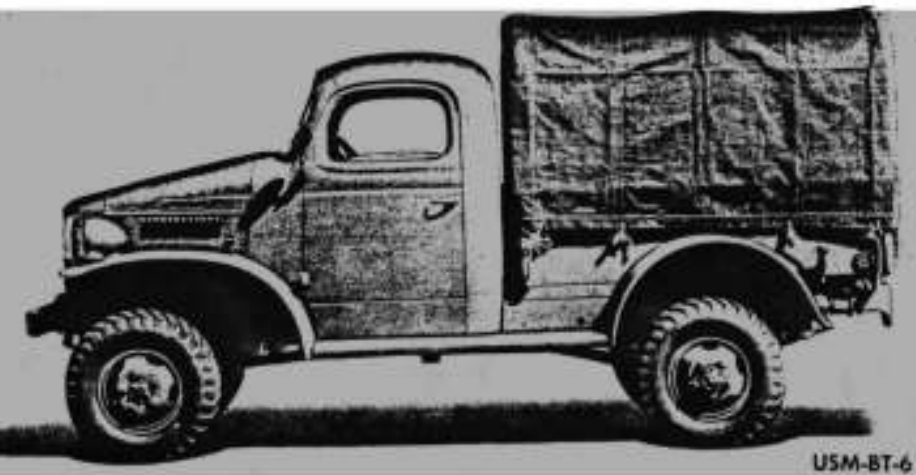
CLOSED CAB—PICK-UP AND EXPRESS BODY



LIST BELOW SHOWS TRUCK MODELS USING PICK-UP OR EXPRESS BODY

Engineering Symbol	Sales Symbol	U. S. Government Contract No.	Individual Parts List No.	Technical Manual No.
T-202	VC-3	W-398-QM-7739	D-9249	—
T-202	VC-3	W-398-QM-7500	D-9147	—
T-202	VC-4	W-398-QM-7500	D-9147	—
T-112	WC-38	W-398-QM-10595	D-10330	10-1154
T-112	WC-47	W-398-QM-11399	D-10455	10-1378

CLOSED CAB—PICK-UP AND EXPRESS BODY

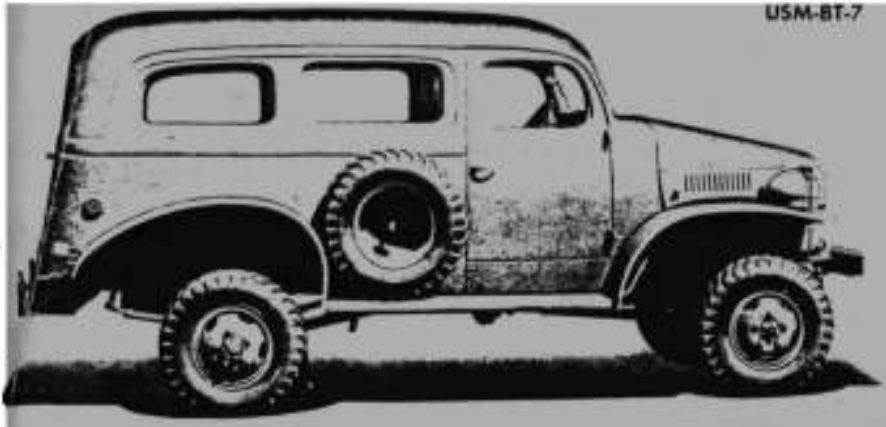


LIST BELOW SHOWS TRUCK MODELS USING PICK-UP OR EXPRESS BODY

Engineering Symbol	Sales Symbol	U. S. Government Contract No.	Individual Parts List No.	Technical Manual No.
T-207	WC-1	W-398-QM-8039	D-9589	—
T-207	WC-1	W-398-QM-8286	D-9589	—
T-207	WC-5	W-398-QM-8286	D-9589	—
T-211	WC-12	W-398-QM-8388	D-10034	—
T-211	WC-12	W-398-QM-8388	D-10187	—
T-211	WC-14	W-398-QM-8388	D-10034	—
T-215	WC-40	W-398-QM-10327	D-10252	10-1152

MODELS AND BODY TYPES

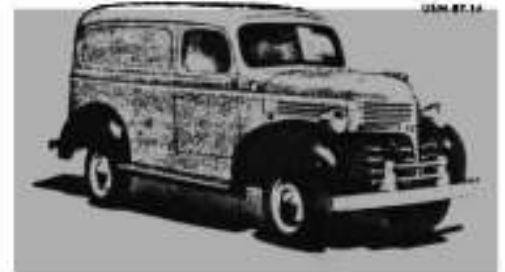
CARRY-ALL BODY



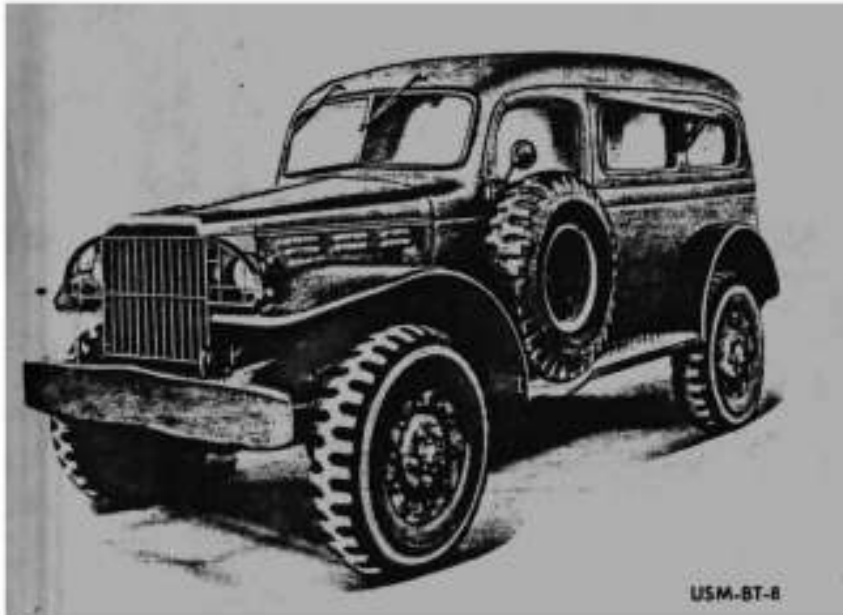
LIST BELOW SHOWS TRUCK MODELS USING CARRY-ALL BODY

Engineering Symbol	Sales Symbol	U. S. Government Contract No.	Individual Parts List No.	Technical Manual No.
T-202	*VC-6	W-398-QM-7812	D-9249	—
T-112	WC-36	W-398-QM-10596	D-10330	10-1154
T-112	WC-48	W-398-QM-11399	D-10455	10-1378
T-207	WC-10	W-398-QM-8288	D-9589	—
T-207	WC-10	W-398-QM-8288	D-9874	—
T-207	WC-10	W-398-QM-9140	D-9953	—
T-211	WC-17	W-398-QM-9388	D-10034	—
T-215	WC-25	W-398-QM-10327	D-10252	10-1152
T-215	WC-26	W-398-QM-DA28	D-10252	10-1152
T-215	WC-26	W-398-QM-11592	D-10465	10-1442

*VC-6 similar to above with exception of sheet metal as shown at Right



CARRY-ALL BODY



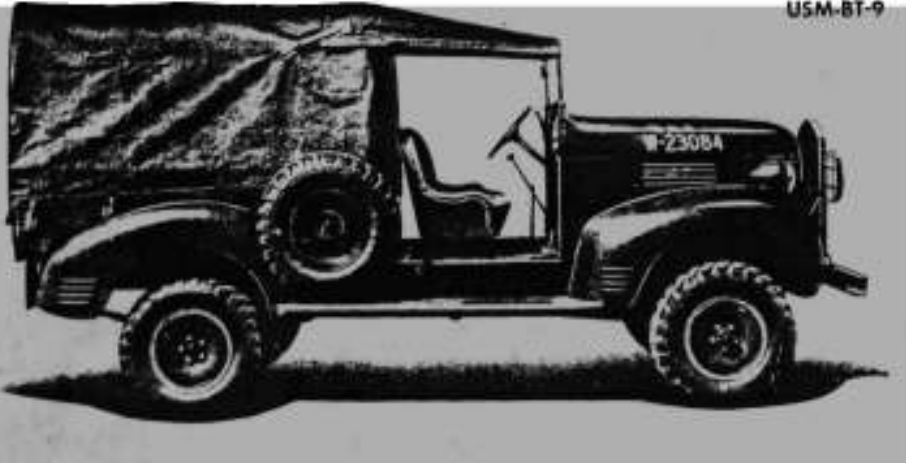
LIST BELOW SHOWS TRUCK MODELS USING CARRY-ALL BODY

Engineering Symbol	Sales Symbol	U. S. Government Contract No.	Individual Parts List No.	Technical Manual No.
T-214	WC-53	W-398-QM-11420	D-10483	10-1530

MODELS AND BODY TYPES

OPEN CAB

USM-BT-9

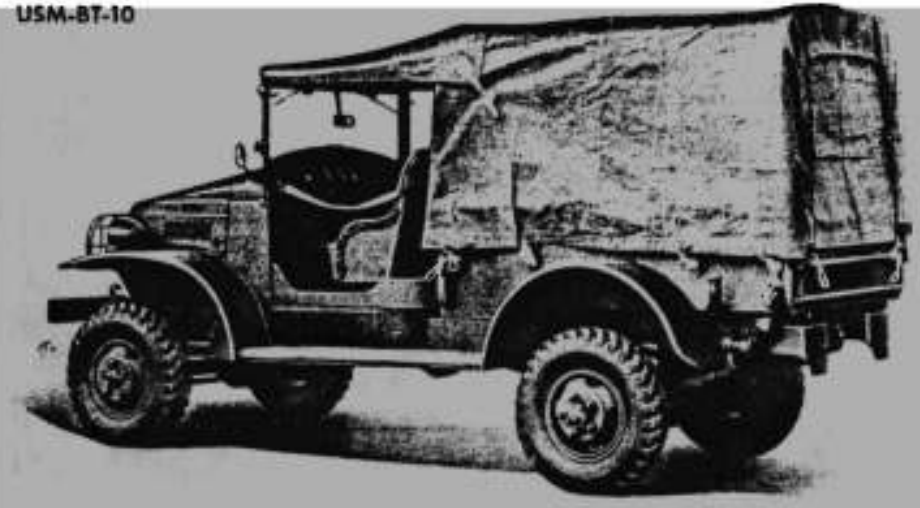


LIST BELOW SHOWS TRUCK MODELS WITH OPEN CAB

Engineering Symbol	Sales Symbol	U. S. Government Contract No.	Individual Parts List No.	Technical Manual No.
T-202	VC-5	W-398-QM-7739	D-9249	—
T-202	VC-5	W-398-QM-7500	D-9147	—
T-202	VC-5	W-398-QM-7899	D-9381	—

OPEN CAB

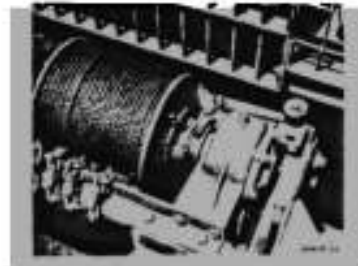
USM-BT-10



LIST BELOW SHOWS TRUCK MODELS WITH OPEN CAB

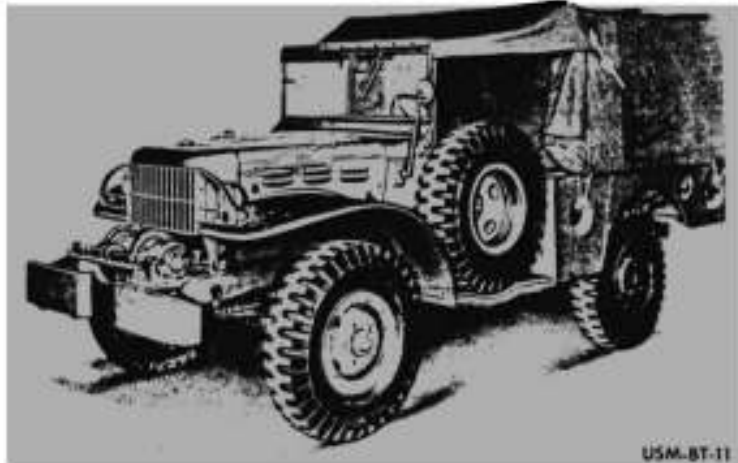
Engineering Symbol	Sales Symbol	U. S. Government Contract No.	Individual Parts List No.	Technical Manual No.
T-207	WC-3	W-398-QM-8286	D-9589	—
T-207	WC-3	W-398-QM-8286	D-9874	—
T-207	*WC-4	W-398-QM-8286	D-9589	—
T-207	*WC-4	W-398-QM-8286	D-9874	—
T-207	*WC-4	W-398-QM-8140	D-9953	—
T-211	WC-13	W-398-QM-9388	D-10034	—
T-211	WC-13	W-398-QM-9388	D-10187	—
T-215	WC-21	W-398-QM-10327	D-10252	10-1152
T-215	WC-21	W-398-QM-DA28	D-10252	10-1152
T-215	WC-22	W-398-QM-10327	D-10252	10-1152
T-215	WC-21	DAW-398-QM-129	D-10451	10-1152
T-215	WC-21	W-398-QM-11592	D-10465	10-1442
T-215	WC-21	DAW-398-QM-210	D-10465	10-1442

*These models with Winch



MODELS AND BODY TYPES

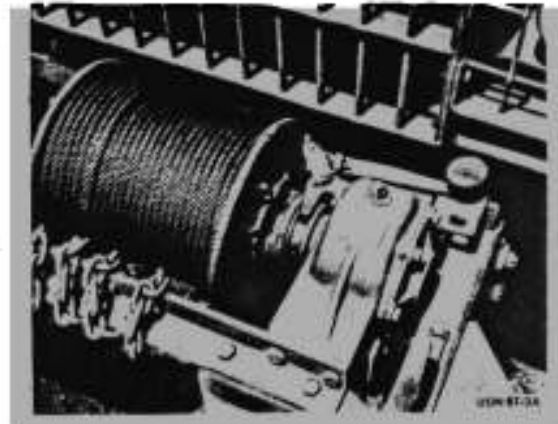
OPEN CAB



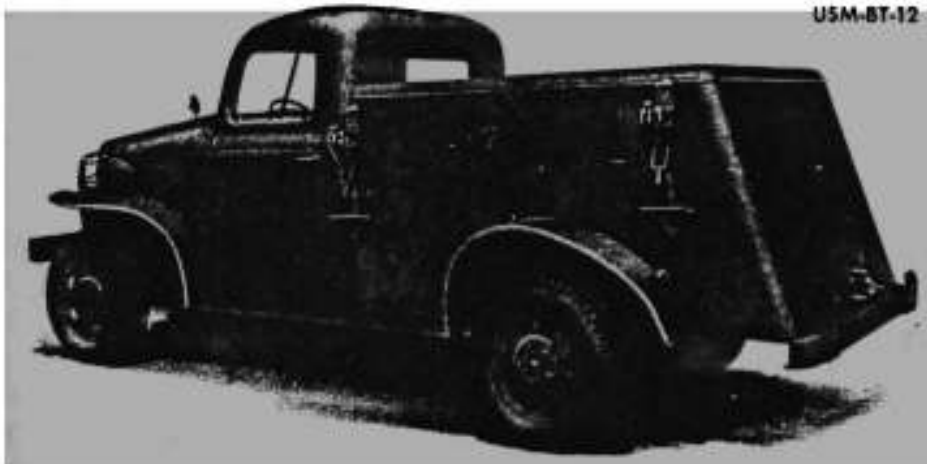
LIST BELOW SHOWS TRUCK MODELS WITH OPEN CAB

Engineering Symbol	Sales Symbol	U. S. Government Contract No.	Individual Parts List No.	Technical Manual No.
T-214 (Weapon Carrier)	WC-51	W-398-QM-11420	D-10483	10-1530
T-214 (Weapon Carrier)	WC-51	W-398-QM-11422	D-10483	10-1530
T-214 (Weapon Carrier)	*WC-52	W-398-QM-11420	D-10483	10-1530
T-214 (Weapon Carrier)	*WC-52	W-398-QM-11422	D-10483	10-1530
T-214 (Gun Motor Carriage)	*WC-55	W-374-ORD-1316	D-10482	SNG-121

*These models with Winch



TELEPHONE BODY



LIST BELOW SHOWS TRUCK MODELS WITH TELEPHONE BODY

Engineering Symbol	Sales Symbol	U. S. Government Contract No.	Individual Parts List No.	Technical Manual No.
T-112	WC-39	W-398-QM-10595	D-10330	10-1154
T-215	WC-43	W-398-QM-11592	D-10471	10-1442
T-112	WC-50	W-398-QM-11399	D-10455	10-1378