

MASTER PARTS LIST

COVERING
DODGE TRUCKS

BUILT FOR
UNITED STATES ARMY

The Following Models Are Covered in This Book:

1940	T202	1940	T203	1941	T207	1941	T211
1941	T215	1941	T112	1941	T118	1942	T214

FOR U. S. ARMY CONTRACT AND REGISTRATION NUMBERS, SEE MODEL
IDENTIFICATION AND SPECIFICATION CHARTS ON PAGES XVII-XVIII-XIX

SPECIAL ADAPTATION
CHRYSLER CORPORATION, PARTS DIVISION
INFORMATION CENTER

FOR MOPAR PRODUCTS

FARGO MOTOR CORPORATION

SUBSIDIARY OF

CHRYSLER CORPORATION

DETROIT, MICHIGAN

PRINTED IN U. S. A.

D-10459

TM 10-1199

WAR DEPARTMENT

Washington, May 8, 1942

TM 10-1199, Master Parts List, Trucks, Models January 1, 1940 to January 1, 1942, published by the Fargo Motor Corporation Division of Chrysler Corporation is furnished for the information and guidance of all concerned.

(AG O62. 11(4/26/41) PC(C), June 10, 1941.)

By order of the Secretary of War:

Official:

J. A. ULIO,
Major General,
The Adjutant General.

G. C. MARSHALL,
Chief of Staff.

Master Parts List

COVERING
DODGE TRUCKS
BUILT FOR
UNITED STATES ARMY

The Following Models Are Covered
in This Book:

1940 T202 1940 T203 1941 T207 1941 T211
1941 T215 1941 T112 1941 T118 1942 T214

FOR U. S. ARMY CONTRACT AND REGISTRATION NUMBERS, SEE MODEL
IDENTIFICATION AND SPECIFICATION CHARTS ON PAGES XVII-XVIII-XIX

SPECIAL ADAPTATION
CHRYSLER CORPORATION, PARTS DIVISION
INFORMATION CENTER
FOR MOPAR PRODUCTS
PUBLISHED OCTOBER, 1942

FARGO MOTOR CORPORATION

SUBSIDIARY OF

CHRYSLER CORPORATION

DETROIT, MICHIGAN

INDEX

SEND BACK PAGES TO FIND GROUP DESIRED
Group 01 Engine
Group 02 Clutch
Group 03 Fuel
Group 04 Exhaust
Group 05 Cooling
Group 06 Electrical
Group 07 Transmission
Group 08 Transfer Case
Group 09 Propeller Shaft
Group 10 Front Axle
Group 11 Rear Axle
Group 12 Brake
Group 13 Wheels, Hubs & Drums
Group 14 Steering
Group 15 Frame and Brackets
Group 16 Springs & Shock Absorber
Group 17 Front Fender & Sheet Metal
Group 18 Body
Group 19 Winch
Group 20 Power Take-Off
Group 21 Bumpers and Guards
Group 22 Miscellaneous-Body-Chassis
Group 23 Gen'l Use, Standardized P'ts
Group 25 Bearing Chart
Group 26 Specifi'ts Lines, Hose Tubes

TME 10-1199

Authentication Notice	Inside Front Cover
Alphabetical Index	Page XX
Arrangement of Book and Finger Tip Information . . .	Page IV
Body Styles (Pictures) and Contract Number . .	Pages VI to XVI
Contents of the Book	Page III
Instructions on Ordering Prime and Painted Sheet Metal	Page V
Model Identification and Specification Charts	Pages XVII to XIX

IDENTIFYING DATA FOR TRUCKS

Engineering Symbols	} All on Plate on Instrument Panel
Model Code	
Serial Numbers	
U. S. Government Registration Nos.	Are painted on both sides of Hood
U. S. Government Contract No.	Is not shown

A WORTH-WHILE SUGGESTION!

★ This book was compiled to bring together under one cover all parts information on Dodge Trucks built for the United States Army by the Chrysler Corporation from January 1, 1940, to January 1, 1942.

★ ★ ★

★ In order that you may have a truly efficient working instrument in this book, many new ideas have been incorporated. . . .

You will find it easy to use this book effectively, if you will spend a few brief moments to acquaint yourself with the way it has been planned.

CONTENTS OF BOOK

The information consolidated into this Parts List includes the following:

Manufacturer's part number

Part name

Vendor's name and part number (where applicable) (in Numerical Index)

Model application

Quantity used per vehicle

List prices (in Numerical Index)

Special notes necessary for proper identification (all in Numerical Index)

Class "A" parts are indicated by "▼" (in Numerical Index)

Parts not peculiar to government vehicles are indicated by "■". Parts thus indicated will be those that are used on commercial as well as government vehicles (in Numerical Index)

FINGER-TIP PARTS INFORMATION

PAGE NUMBERING

Roman numerals (I-II-III-IV-V) are used for all pages up to the start of group specifying information, and at that point pages are numbered consecutively in the usual manner.

BODY TYPES:

To make it easy for you to quickly identify any particular body type, all types of bodies with model symbols and contract numbers are shown on pages VI to XVI.

MODEL IDENTIFICATION AND SPECIFICATION CHART

Quickly converts sales symbols into Engineering symbols which are used for specifying parts for a particular truck model.

EXPLODED VIEWS OF MOST MAJOR GROUPS—

- (a) Shows parts in their relative position.
- (b) Each exploded view has an index of its own group. Each part carries a reference number which gives its correct name with its sub-group number and the number of page on which it is specified for particular model application.

SPECIFYING CHARTS

- (a) Set up in column form, except in cases where it proved more practical to give part numbers and name in exploded picture. The aim always—greatest speed and accuracy in specifying parts.
- (b) As far as possible parts are listed showing assemblies with their attaching parts (bolts-nuts) in the sequence of removal or replacement—otherwise attaching parts are listed in lower panel.
- (c) Where attaching parts are not pictured in sequence of removal, a reference or key letter is found directly under the name of the major part. You then go directly to the lower panel under this reference or key letter.

ALMOST EVERY PART PICTURED

- (a) Above each specifying column is a picture of the particular part for quick identification.
- (b) In cases where a type of part carries more than one part number and there are graphic differences in the parts, more than one part is pictured.
- (c) Illustrating each part at top of columns helps parts picker or mechanic in selecting correct parts. However, it is recommended that part numbers be specified from the columns and not from the picture. There are certain instances where types of parts have minor differences which would be important when specifying but not of sufficient importance to warrant more than one picture.
- (d) While it is impracticable to picture all parts in their relative size, this has been done wherever possible.

PARTS INTERCHANGEABILITY LIST

Specifying charts give at a glance—complete parts interchangeability.

ALPHABETICAL INDEX — Located in front of book.

Quick reference to any part by name is provided in the alphabetical index. This index shows the numbers or the sub-group and page on which the parts are listed.

NUMERICAL INDEX — Located in back of book.

Reference to any part number is provided in the numerical index. This index lists all parts in numerical sequence and shows the sub-group in which each part is listed—also list price, part number and name of vendor (where applicable) and all identifying symbols.

Instructions for Ordering Prime or Painted Sheet Metal Parts

Sheet metal parts which are indicated as "white" should be painted locally.

When local painting facilities are not available, prime or painted sheet metal parts may be ordered from Chrysler Corporation, Parts Division as follows:

To order primed parts specify "white" part number and in the description column on the parts order enter the "Prime Operation."

To order painted parts specify "white" part number and in the description column on the parts order enter the following: "Prime, Paint and Packing Operation." Also specify truck serial number.

PRIME FINISH AND SPECIAL PACKING OPERATIONS

Part No. Prime Operation	Description	Additional Net Price For Operation
830006	Front Fenders and Hood Top Panels.....	\$ 1.50
830007	Rear Fenders, Radiator Shells and Hood Halves.....	1.25
830010	Rear Wheel Shields (Per Shield), Radiator Air Scoop Pan, Radiator Grilles, Radiator Shell Panels, Running Boards, Running Board Splash Guards, Hood Side Panels, Body to Frame Splash Shields, Body Side Shields, Body to Rear Fender Splash Shields, Front Fender Splash Shield Assemblies, Fender Lower Grilles, Rear Bumper Stone Deflectors, Front Bumper Shields, Front Bumper End Plate.....	1.00

PRIME, PAINT AND SPECIAL PACKING OPERATIONS

Part No. Paint Operation	Description	Additional Net Price For Operation
830008	Front Fenders, Deck and Luggage Compartment Lids and Hood Top Panels.....	\$ 4.75
830009	Rear Fenders, Radiator Shells and Hood Halves.....	3.50
830011	Rear Wheel Shields (Per Shield), Wheels, Radiator Air Scoop Pan, Radiator Grilles, Radiator Shell Panels, Running Boards, Running Board Splash Guards, Hood Side Panels, Body to Frame Splash Shields, Body Side Shields, Body to Rear Fender Splash Shields, Front Fender Splash Shield Assemblies, Fender Lower Grilles, Rear Bumper Stone Deflectors, Front Bumper Shields, Front Bumper End Plate.....	2.00
830012	MISCELLANEOUS PARTS: Such as: Grille, Hood, Body or Fender Mouldings, Ornaments, Medallions, Escutcheons, Handles, or any other part of similar area.....	.50
830004	Doors.....	5.00
None	Cab or Cab Shell (Painted).....	17.50
	Cab or Cab Shell (Crating Operation).....	7.50
	Crating Roof Panels	\$5.00 net, no discount.
	Crating Roof Repair Panels	\$3.00 net, no discount.

The above net charges, not subject to discount, will be added to the net price of the part when a finish other than white is desired.

Prices and specifications subject to change without notice.

MODELS AND BODY TYPES

CLOSED CAB—NO BODY (1½ ton)



USM-BT-1

LIST BELOW SHOWS TRUCK MODELS USING CLOSED CAB—NO BODY

Engineering Symbol	Sales Symbol	U. S. Government Contract No.	Individual Parts List No.	Technical Manual No.
T-211	WC-20	W-398-QM-9388	D-10034	—
T-215	WC-41	W-398-QM-10327	D-10252	10-1152
T-215	WC-41	W-398-QM-11244	D-10454	10-1152

CLOSED CAB—NO BODY (1½ ton)



USM-BT-2

LIST BELOW SHOWS TRUCK MODELS USING CLOSED CAB—NO BODY

Engineering Symbol	Sales Symbol	U. S. Government Contract No.	Individual Parts List No.	Technical Manual No.
T-118	WF-31	W-398-QM-10616	D-10353	10-1156
T-118	WF-31	W-398-QM-12572	D-10501	10-1534

MODELS AND BODY TYPES

VII

CLOSED CAB—CARGO BODY

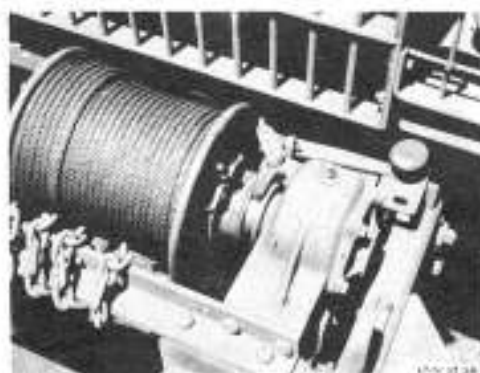


USM-BT-3

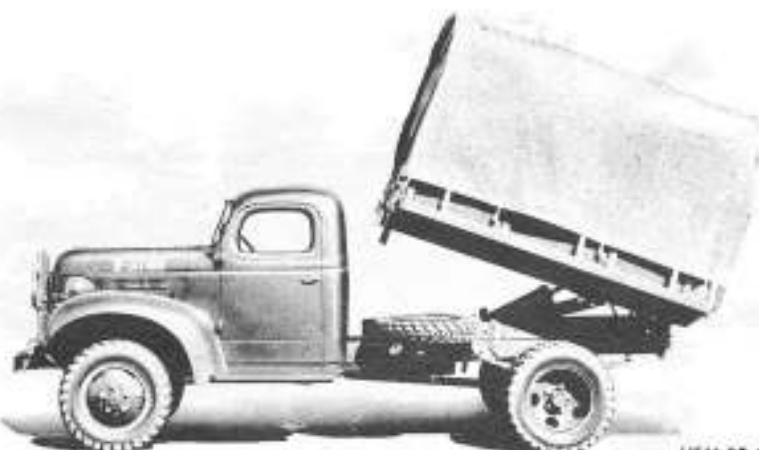
LIST BELOW SHOWS TRUCK MODELS WITH CARGO BODY

Engineering Symbol	Sales Symbol	U. S. Government Contract No.	Individual Parts List No.	Technical Manual No.
T-203	VF-401	W-398-QM-7471	D-9068	—
T-203	VF-404	W-398-QM-7813	D-9250	—
T-203	*VF-402	W-398-QM-7471	D-9068	—
T-203	*VF-405	W-398-QM-7813	D-9250	—

*These Models with Winch



CLOSED CAB—DUMP BODY



USM-BT-4

LIST BELOW SHOWS TRUCK MODELS WITH DUMP BODY

Engineering Symbol	Sales Symbol	U. S. Government Contract No.	Individual Parts List No.	Technical Manual No.
T-203	VF-406	W-398-QM-7813	D-9250	—
T-203	VF-403	W-398-QM-7471	D-9068	—

TM 10-1199

MODELS AND BODY TYPES

CLOSED CAB—PICK-UP AND EXPRESS BODY

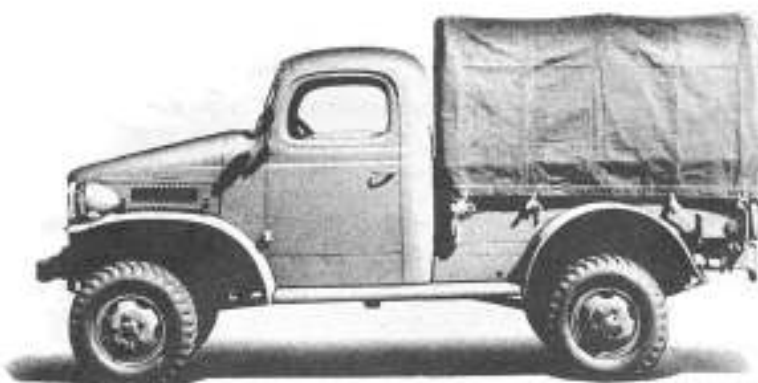


USM-BT-5

LIST BELOW SHOWS TRUCK MODELS USING PICK-UP OR EXPRESS BODY

Engineering Symbol	Sales Symbol	U. S. Government Contract No.	Individual Parts List No.	Technical Manual No.
T-202	VC-3	W-398-QM-7738	D-9219	—
T-202	VC-3	W-398-QM-7500	D-9147	—
T-202	VC-4	W-398-QM-7500	D-9147	—
T-112	WC-38	W-398-QM-10595	D-10330	10-1154
T-112	WC-47	W-398-QM-11399	D-10455	10-1378

CLOSED CAB—PICK-UP AND EXPRESS BODY



USM-BT-6

LIST BELOW SHOWS TRUCK MODELS USING PICK-UP OR EXPRESS BODY

Engineering Symbol	Sales Symbol	U. S. Government Contract No.	Individual Parts List No.	Technical Manual No.
T-207	WC-1	W-398-QM-8039	D-9589	—
T-207	WC-1	W-398-QM-8296	D-9589	—
T-207	WC-8	W-398-QM-8296	D-9589	—
T-211	WC-12	W-398-QM-9388	D-10034	—
T-211	WC-12	W-398-QM-9388	D-10187	—
T-211	WC-14	W-398-QM-9388	D-10034	—
T-215	WC-40	W-398-QM-10327	D-10252	10-1152