

**TM 9-808**

**R E S T R I C T E D**

**WAR DEPARTMENT**

**TECHNICAL MANUAL**



**3/4-TON TRUCK, 4x4 (DODGE)**

**MAY 12, 1943**



TECHNICAL MANUAL }  
No. 9-808 }WAR DEPARTMENT  
Washington, May 12, 1943**3/4 -TON TRUCK, 4x4 (DODGE)**Prepared under the direction of the  
Chief of Ordnance

(with the cooperation of the Fargo Motor Corporation, subsidiary of Chrysler Corporation)

**CONTENTS****PART ONE — Vehicle Operating Instructions**

		Paragraphs	Pages
SECTION	I. Introduction .....	1— 4	3— 16
	II. Vehicle controls and operation....	5— 26	17— 50
	III. Controls and operation of auxiliary unit .....	27	51— 54
	IV. Operation under unusual conditions .....	28— 33	55— 61
	V. Preventive maintenance inspections .....	34— 41	62— 94
	VI. Lubrication .....	42— 44	95—104
	VII. General care and preservation.....	45— 47	105—106
	VIII. Tools and equipment on the vehicle .....	48— 51	107—113
	IX. Materiel affected by chemicals ....	52— 55	114—116
	X. Demolition to prevent capture....	56— 58	117

**PART TWO — Vehicle Maintenance Instructions**

XI. Maintenance allocations .....	59— 60	118—126
XII. Equipment and special tools .....	61— 64	127—133

\* This manual supersedes TB 808-1, December 7, 1942 and TM 9-808, November 14, 1942.

**¾-TON TRUCK, 4 x 4 (DODGE)**

	Paragraphs	Pages
SECTION XIII. Organizational spare parts and accessories .....	65– 68	134–141
XIV. Engine .....	69– 87	142–193
XV. Clutch .....	88– 92	194–199
XVI. Fuel system .....	93–114	200–221
XVII. Exhaust system .....	115–120	222–225
XVIII. Cooling system .....	121–133	226–241
XIX. Battery .....	134–140	242–252
XX. Starting system .....	141–147	253–256
XXI. Generating system .....	148–155	257–274
XXII. Ignition system .....	156–171	275–291
XXIII. Lighting system .....	172–203	292–315
XXIV. Miscellaneous electrical equipment .....	204–214	316–324
XXV. Wiring .....	215–224	325–340
XXVI. Instruments and gages .....	225–236	341–347
XXVII. Transmission and power take-off .....	237–243	348–361
XXVIII. Transfer case .....	244–248	362–366
XXIX. Propeller shafts .....	249–252	367–370
XXX. Front axle .....	253–263	371–386
XXXI. Rear axle .....	264–271	387–396
XXXII. Foot brakes .....	272–282	397–413
XXXIII. Hand brake .....	283–289	414–420
XXXIV. Wheels and tires .....	290–298	421–432
XXXV. Steering .....	299–307	433–446
XXXVI. Frame .....	308–312	447–451
XXXVII. Springs and shock absorbers .....	313–324	452–462
XXXVIII. Body and sheet metal .....	325–341	463–475
XXXIX. Winch .....	342–350	476–482
XL. Painting .....	351–356	483–485
XLI. Storage and shipment .....	357–361	486–491
XLII. References .....	362–363	492–493
INDEX .....		494–505



## PART ONE – Vehicle Operating Instructions

### Section I

## INTRODUCTION

	Paragraph
Scope .....	1
Description .....	2
Differences between models .....	3
Data .....	4

### 1. SCOPE.

a. This manual is published for the information of the using arms and services.

b. In addition to a description of the Dodge ¾-ton, four-wheel drive (4 x 4) vehicles, this manual contains description of the major units, group assemblies, and functional system; and instructions for their operation, inspection, adjustment, minor repair, removal, and installation. Specific information for the guidance of operating personnel (crew) is contained in Part One, sections I to X, inclusive. Information for the guidance of organizational maintenance personnel (using arms mechanics) is contained in Part Two, sections XI to XLII, inclusive.

c. In all cases where the nature of the repair, modification, or adjustment is beyond the scope or facilities of the unit, the responsible ordnance service should be informed so that trained personnel with suitable tools and equipment may be provided, or proper instructions issued.

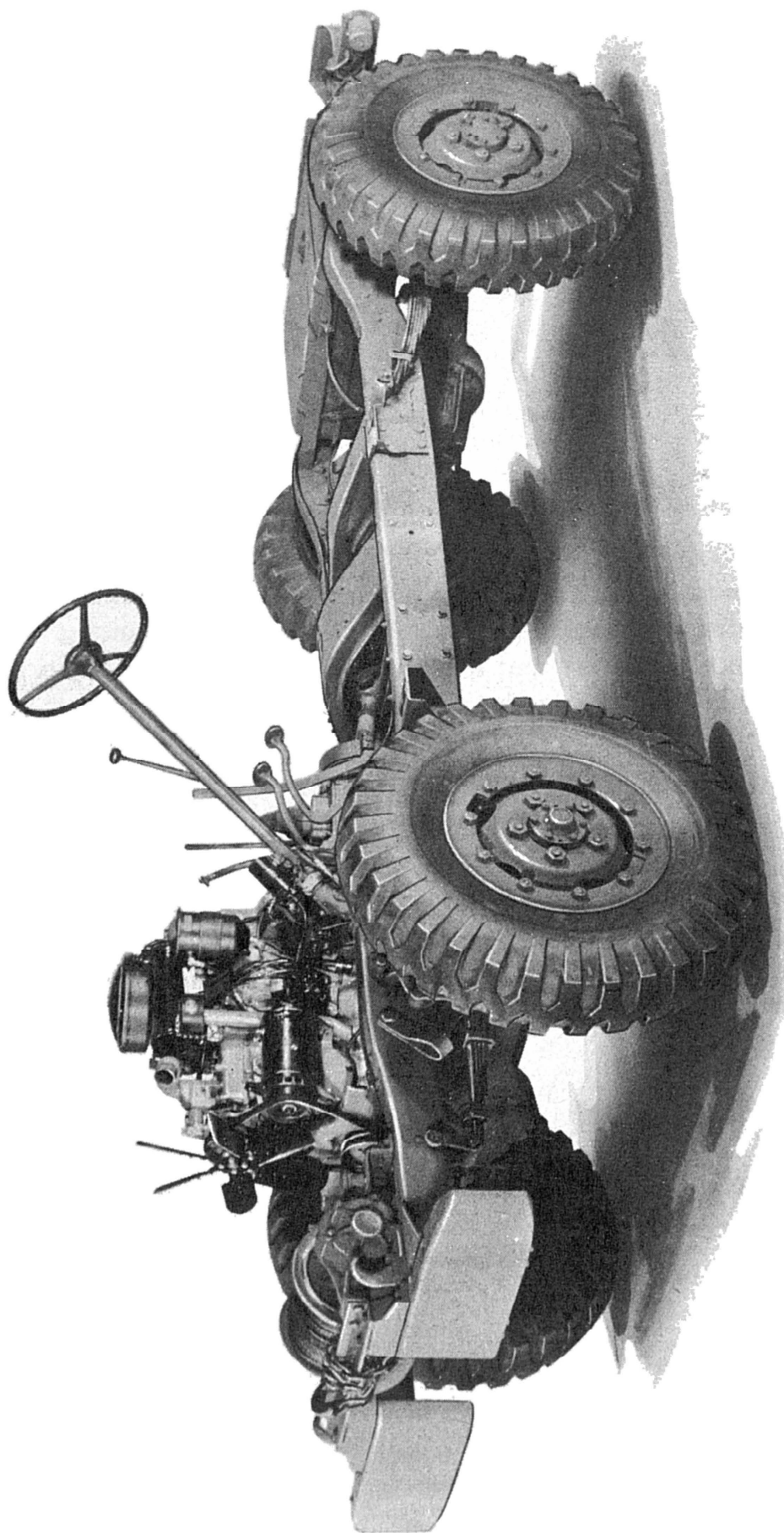
### 2. DESCRIPTION.

a. The following models of vehicles are covered by this manual:

Type of Vehicle	Model	Type of Vehicle	Model
Weapon carrier .....	WC-51	Command .....	WC-56
Weapon carrier with winch	WC-52	Command with winch.....	WC-57
Carryall .....	WC-53	Telephone maintenance ....	WC-59
Ambulance .....	WC-54	Emergency repair .....	WC-60

b. The steering gear of all models is mounted on the left side; therefore, all models are known as “left-hand drive” vehicles. Throughout this manual, the use of the terms “left” and “right” indicate positions in relation to the location of the steering gear; “left” means the steering gear side; “right” means the side opposite steering gear.

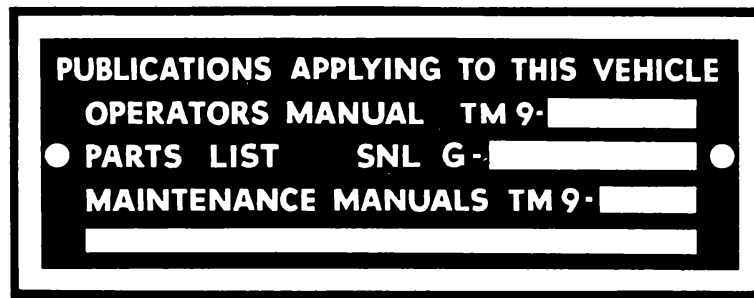
**$\frac{3}{4}$ -TON TRUCK, 4 x 4 (DODGE)**



RA PD 52783

**Figure 1 —  $\frac{3}{4}$ -Ton, 4 x 4 Chassis**

## INTRODUCTION



RA PD 52784

*Figure 2 — Manual Identification Plate*

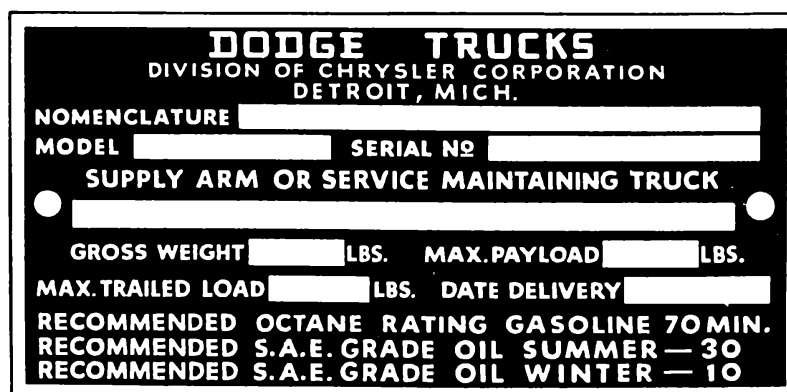
c. All models are equipped with a liquid-cooled, 6-cylinder, L-head gasoline engine, located at the front of the vehicle. Engine power is transmitted from the four-speed transmission through a short propeller shaft to the transfer case, and thence to both front and rear axles. The vehicles may be driven with all four wheels or with rear wheels only.

d. A manual identification plate is attached to the instrument panel of each vehicle to designate the technical manual number of the publications applying to the vehicle (fig. 2).

e. A serial number plate is attached to the instrument panel of each vehicle. This plate gives pertinent vehicle information such as model, serial number, weights, fuel, and oil recommendations (fig. 3).

**3. DIFFERENCES BETWEEN MODELS.**

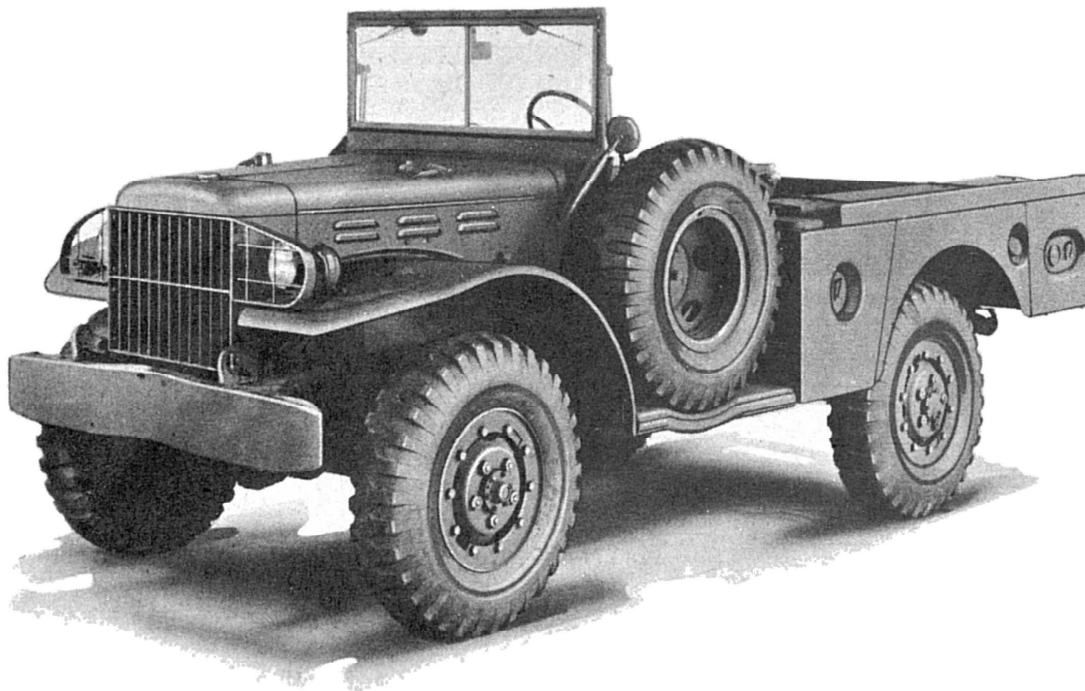
a. **Weapon Carrier; Models WC-51 and WC-52** (figs. 4, 5, 6, and 7). The difference between models WC-51 and WC-52 is that the latter is equipped with a power take-off and a drive shaft for the winch mounted at the front of the vehicle. Both models can be identified by the open driver's compartment and weapon carrier body with tarpaulin mounted behind the driver's compartment. The electrical system of both models is 6-volt with the battery located under the hood.



RA PD 52710

*Figure 3 — Serial Number Plate*

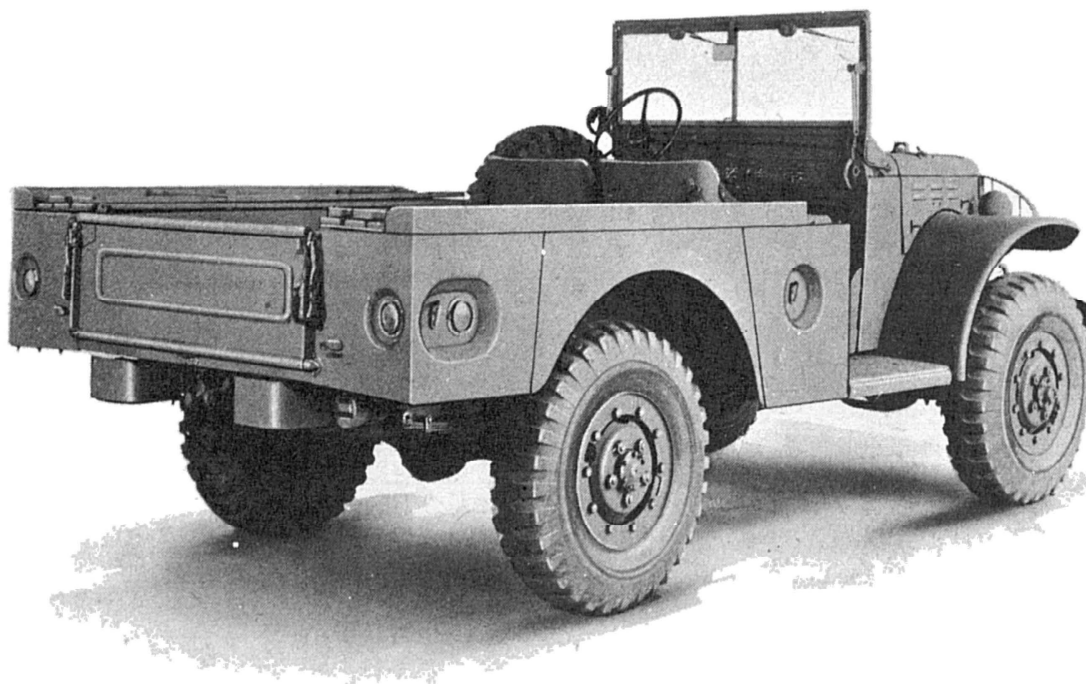
**¾-TON TRUCK, 4 x 4 (DODGE)**



RA PD 52757

**Figure 4 — Weapon Carrier Model WC-51 — Tarpaulin Off —  
Left Front View**

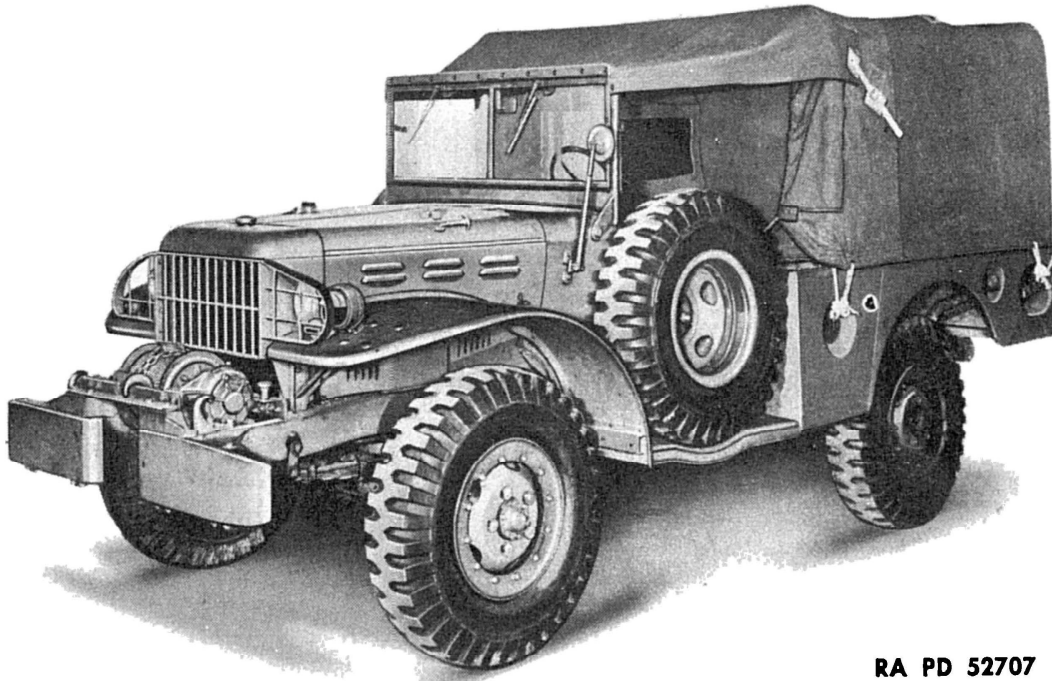
b. Carryall; Model WC-53 (figs. 8 and 9). This model can be identified by its closed body with side windows. The electrical system is 12-volt with battery located on right running board, and provision is made for the installation of radio equipment.



RA PD 52758

**Figure 5 — Weapon Carrier Model WC-51 — Tarpaulin Off —  
Right Rear View**

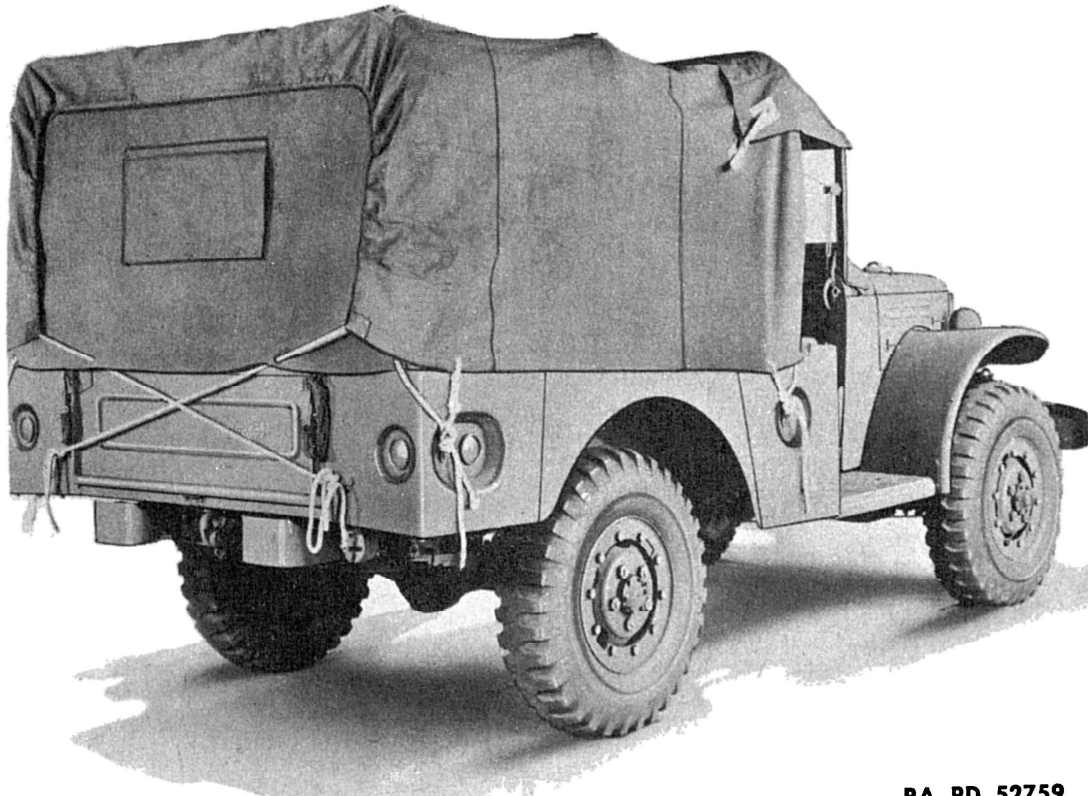
## INTRODUCTION



RA PD 52707

**Figure 6 — Weapon Carrier Model WC-52, with Winch — Tarpaulin On — Left Front View**

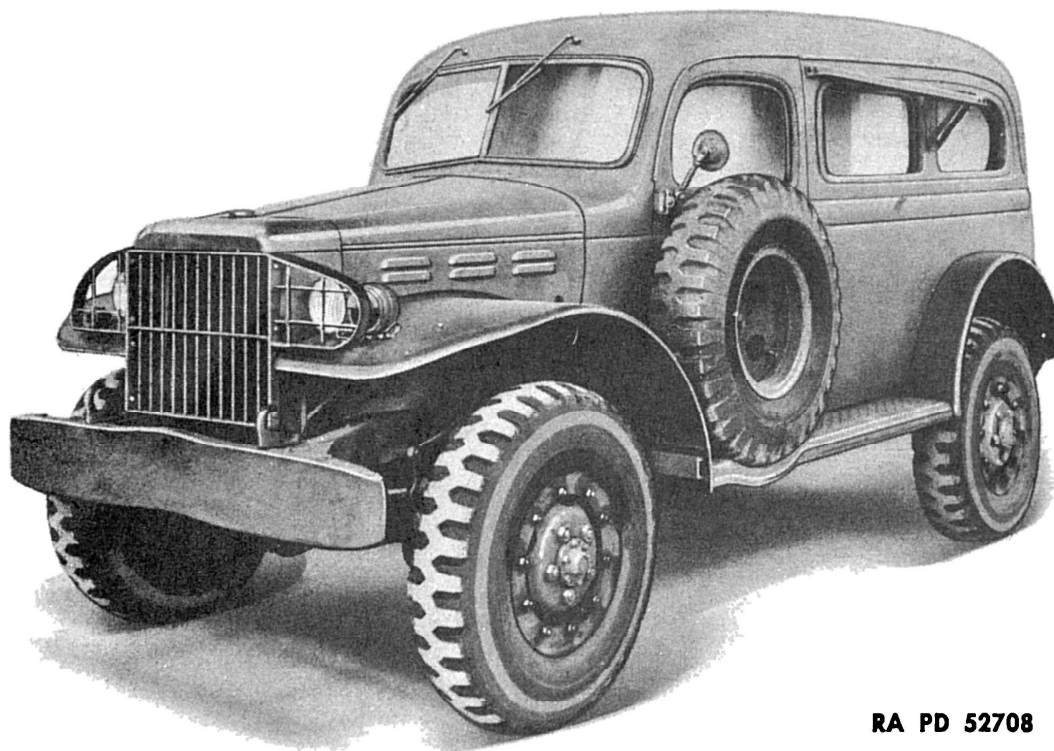
c. **Ambulance; Model WC-54** (figs. 10 and 11). This model can be identified by the large cross on each side of the body. It contains equipment for the care of wounded personnel. The electrical system is 6-volt with battery located under the hood.



RA PD 52759

**Figure 7 — Weapon Carrier Model WC-52, with Winch — Tarpaulin On — Right Rear View**

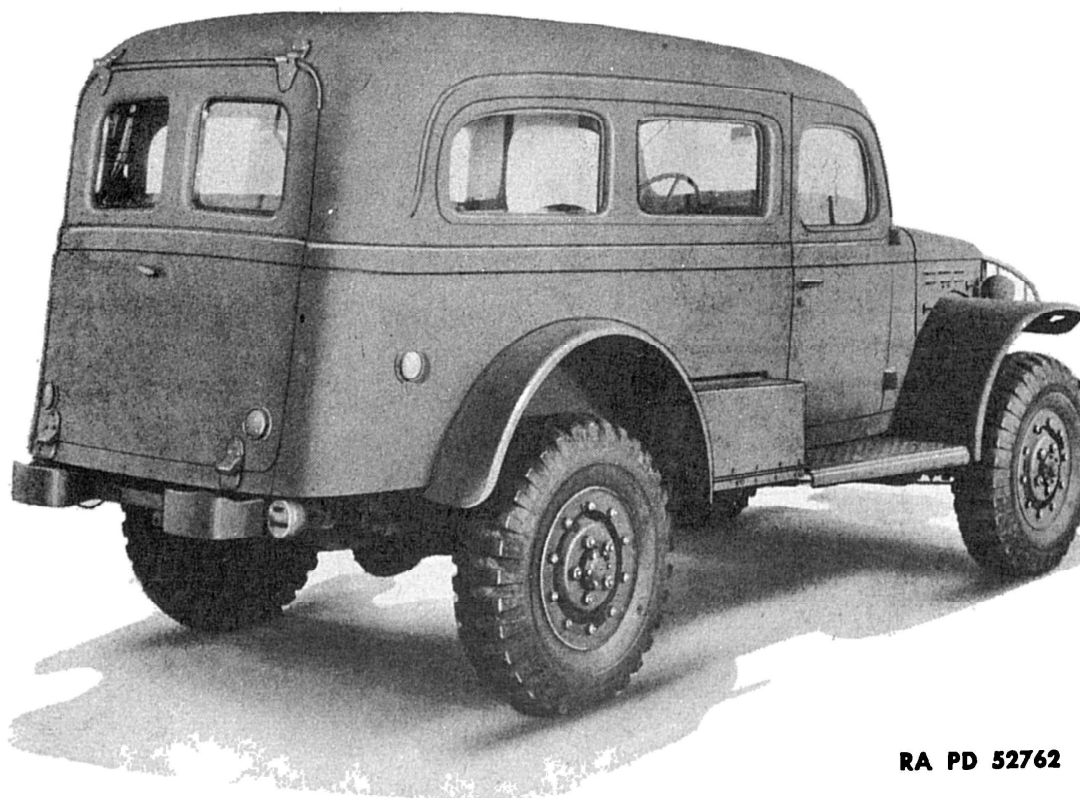
**3/4-TON TRUCK, 4 x 4 (DODGE)**



RA PD 52708

**Figure 8 — Carryall Model WC-53 — Left Front View**

d. **Command; Models WC-56 and WC-57** (figs. 12, 13, 14, and 15). The difference between models WC-56 and WC-57 is that the latter is equipped with a power take-off and a drive shaft for the winch mounted at the front of the vehicle. Both models can be identified by the open type



RA PD 52762

**Figure 9 — Carryall Model WC-53 — Right Rear View**