

TM 9-808

WAR DEPARTMENT TECHNICAL MANUAL

3/4-TON 4x4 TRUCK (DODGE)

Distribution. This is a reprint for stock only, of TM 9-808, 3/4 Ton 4x4 Truck (Dodge), dated 31 January 1944. No original distribution will be made to personnel possessing the original publication.

3/4 - TON
4x4 TRUCK
(DODGE)



WAR DEPARTMENT
Washington 25, D. C., 31 January 1944

TM 9-808, 3/4-ton 4 x 4 Truck (Dodge), is published
for the information and guidance of all concerned

[A.G. 300.7 (20 Oct. 43)]

BY ORDER OF THE SECRETARY OF WAR:

G. C. MARSHALL,
Chief of Staff.

OFFICIAL:

J. A. ULIO,
Major General,
The Adjutant General.

DISTRIBUTION: B and H7 (5); B18 (2); R9 (4); Bn 6, 7, 9 and 18
(2); C6, 7 and 18 (2), 9 (5).

(For explanation of symbols, see FM 21-6)

3/4-TON 4 x 4 TRUCK (DODGE)

CONTENTS

PART ONE—VEHICLE OPERATING INSTRUCTIONS

		Paragraphs	Pages
SECTION	I	Introduction	1 5
	II	Description and tabulated data..	2-4 6-14
	III	Driving controls and operation..	5-9 15-33
	IV	Auxiliary equipment controls and operation	10-11 34-38
	V	Operation under unusual condi- tions	12-17 39-46
	VI	First echelon preventive main- tenance services	18-22 47-56
	VII	Lubrication	23-24 57-67
	VIII	Tools and equipment stowage on the vehicle	25 68-69

PART TWO—VEHICLE MAINTENANCE INSTRUCTIONS

SECTION	IX	Record of modifications	26 70
	X	New vehicle run-in test	27-28 71-75
	XI	Second echelon preventive main- tenance	29 76-97
	XII	Organization tools and equipment	30-31 98
	XIII	Trouble shooting	32-53 99-132
	XIV	Engine—description, maintenance, and adjustment in vehicle . . .	54-65 133-153
	XV	Engine removal and installation.	66-67 154-162
	XVI	Fuel system	68-75 163-176
	XVII	Exhaust system	76-79 177-178
	XVIII	Cooling system	80-86 179-189
	XIX	Battery	87-89 190-194

3/4-TON 4 x 4 TRUCK (DODGE)

	Paragraphs	Pages
SECTION XX Starting system	90-93	195-197
XXI Generating system	94-97	198-201
XXII Ignition system	98-102	202-208
XXIII Radio interference suppression..	103	209-219
XXIV Lighting system	104-113	220-230
XXV Instruments, gages, and miscel- laneous electrical equipment..	114-123	231-240
XXVI Wiring	124-128	241-251
XXVII Clutch	129-131	252-255
XXVIII Transmission and power take-off.	132-134	256-261
XXIX Transfer case	135-137	262-264
XXX Propeller shafts	138-139	265-267
XXXI Front axle	140-145	268-280
XXXII Rear axle	146-149	281-286
XXXIII Foot brakes	150-155	287-297
XXXIV Hand brake	156-160	298-302
XXXV Wheels and tires	161-165	303-309
XXXVI Steering	166-169	310-315
XXXVII Frame	170-171	316-318
XXXVIII Springs and shock absorbers	172-176	319-325
XXXIX Body and sheet metal	177-187	326-333
XL Winch	188-193	334-337

PART THREE—STORAGE AND SHIPMENT

SECTION XLI Storage and shipment	194-198	338-343
REFERENCES		344-346
INDEX		347

PART ONE—VEHICLE OPERATING INSTRUCTIONS

Section I

INTRODUCTION

Paragraph

Scope 1

1. SCOPE.

a. This technical manual is published for the information and guidance of the using arm personnel charged with the operation and maintenance of this materiel.

b. In addition to a description of the $\frac{3}{4}$ -ton 4 x 4 truck (Dodge), this manual contains technical information required for the identification, use, and care of the materiel. The manual is divided into three parts. Part One, section I through section VIII, contains vehicle operating instructions. Part Two, section IX through section XL, contains vehicle maintenance instructions for using arm personnel charged with the responsibility of doing maintenance work within their jurisdiction. Part Three, section XLI, contains instructions for the shipment and limited storage of this vehicle.

c. In all cases where the nature of the repair, modifications, or adjustment is beyond the scope or facilities of the unit, the responsible ordnance service should be informed so that trained personnel with suitable tools and equipment may be provided, or proper instructions issued.

d. This manual includes operating and organizational maintenance instructions from TM 10-1531, 1 October 1942. Together with TM 9-1808A and TM 9-1808B this manual supersedes TM 10-1531, 1 October 1942.

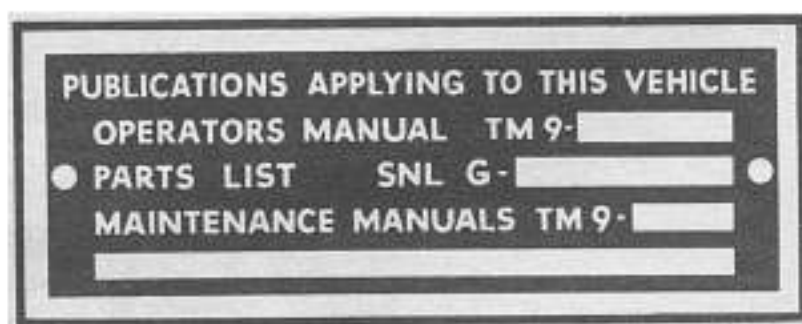
3/4-TON 4 x 4 TRUCK (DODGE)**Section II****DESCRIPTION AND TABULATED DATA**

	Paragraph
Description	2
Differences among models	3
Data	4

2. DESCRIPTION.

a. The following models of vehicles are covered by this manual:

Type of Vehicle	Model	Type of Vehicle	Model
Weapon carrier	WC-51	Command	WC-56
Weapon carrier with winch	WC-52	Command with winch ..	WC-57
Carryall	WC-53	Telephone maintenance.	WC-59
Ambulance	WC-54	Emergency repair	WC-60



RA PD 52784

Figure 1—Publication Identification Plate

b. All models are equipped with a liquid-cooled, 6-cylinder, L-head gasoline engine, located at the front of the vehicle. Engine power is transmitted from the four-speed transmission through a short propeller shaft to the transfer case, and thence to both front and rear axles. The vehicles may be driven with all four wheels or with rear wheels only.

c. A manual identification plate is attached to the instrument panel of each vehicle to designate the technical manual number and parts list number pertaining to the vehicle (fig. 1).

d. A serial number plate is attached to the instrument panel of each vehicle. This plate gives pertinent vehicle information such as model, serial number, weights, fuel and oil recommendations (fig. 2).

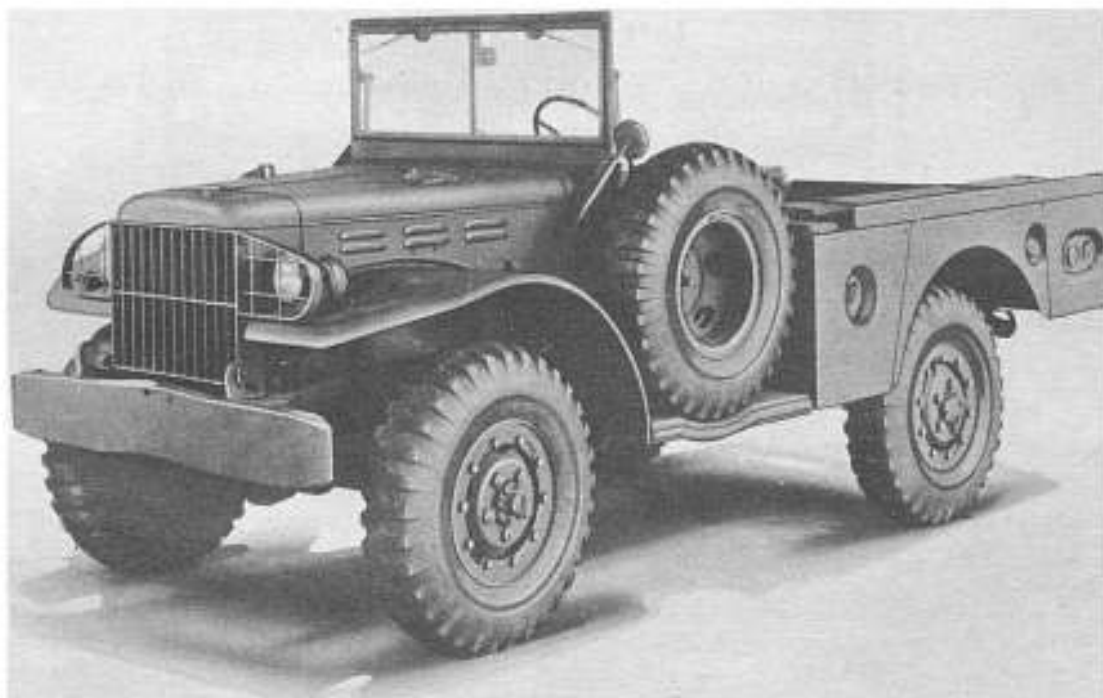
e. The steering gear of all models is mounted on the left side; therefore, all models are known as "left-hand drive" vehicles. Throughout this manual, the use of the terms "left" and "right" indicate positions in relation to the location of the steering gear; "left" means the steering gear side; "right" means the side opposite steering gear.

DESCRIPTION AND TABULATED DATA**3. DIFFERENCES AMONG MODELS.**

a. **Weapon Carrier; Models WC-51 and WC-52** (figs. 3 and 4). The difference between models WC-51 and WC-52 is that the latter is equipped with a power take-off and a drive shaft for the winch mounted at the front of the vehicle. Both models can be identified

DODGE TRUCKS	
DIVISION OF CHRYSLER CORPORATION DETROIT, MICH.	
NOMENCLATURE	
MODEL	SERIAL NO
SUPPLY ARM OR SERVICE MAINTAINING TRUCK	
GROSS WEIGHT	LBS. MAX. PAYLOAD
	LBS.
MAX. TRAILED LOAD	DATE DELIVERY
RECOMMENDED OCTANE RATING GASOLINE 70 MIN.	
RECOMMENDED S.A.E. GRADE OIL SUMMER — 30	
RECOMMENDED S.A.E. GRADE OIL WINTER — 10	

RA PD 52710

Figure 2—Serial Number Plate

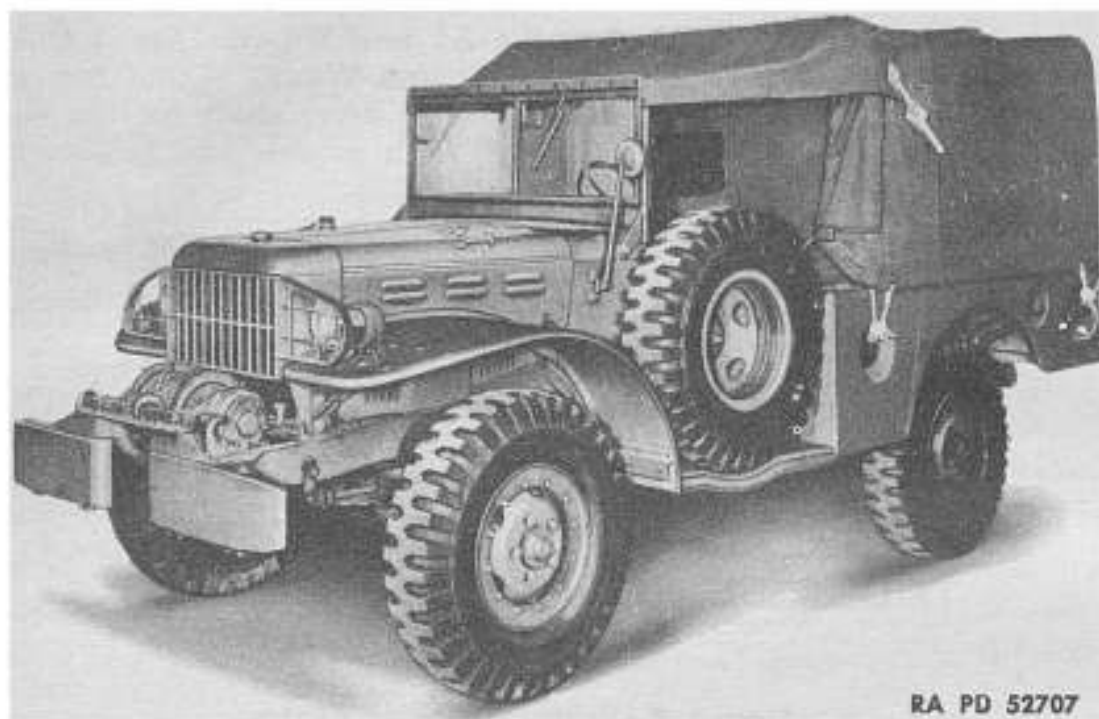
RA PD 52757

Figure 3—Weapon Carrier (Model WC-51)—Left Front View

by the open driver's compartment and weapon carrier body with tarpaulin mounted behind the driver's compartment. The electrical system of both models is 6-volt with the battery located under the hood.

b. **Carryall; Model WC-53** (fig. 5). This model can be identified by its closed body with side windows. The electrical system is 12-volt

3/4-TON 4 x 4 TRUCK (DODGE)



**Figure 4—Weapon Carrier (Model WC-52) with Winch—
Left Front View**

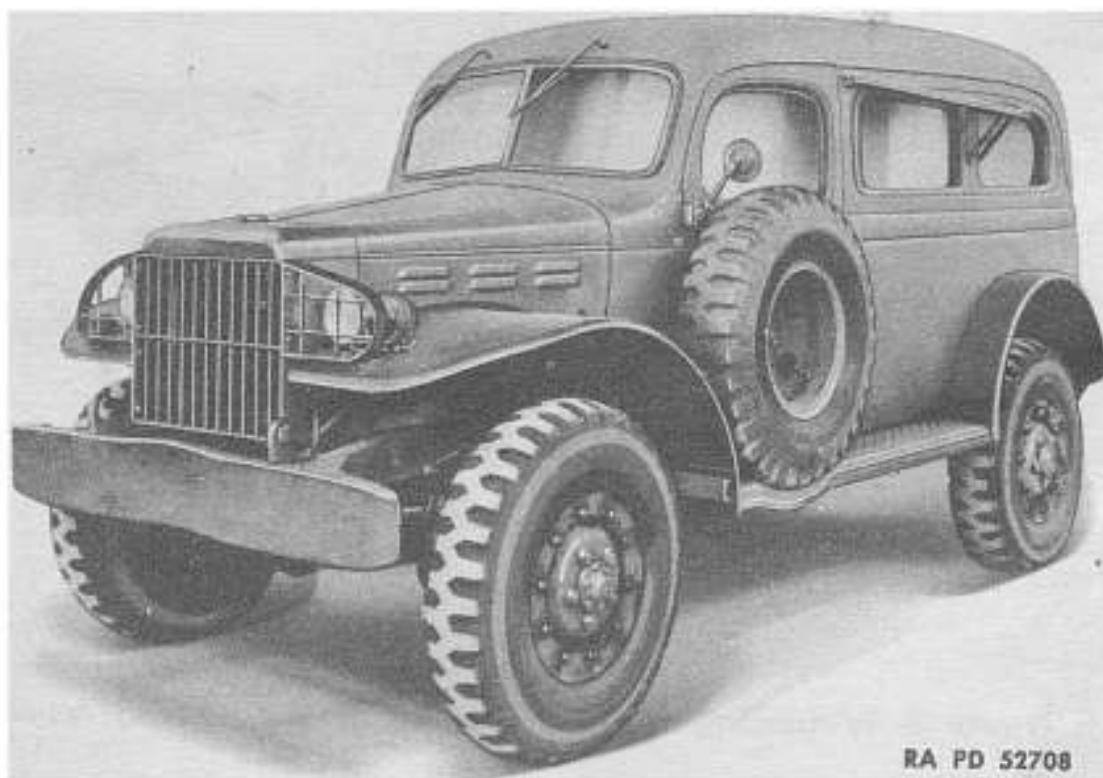


Figure 5—Carryall (Model WC-53)—Left Front View