

RESTRICTED

WAR DEPARTMENT

TECHNICAL MANUAL



1½ TON TRUCK, 6X6  
(DODGE)

MARCH 18, 1943

**RESTRICTED**

**TECHNICAL MANUAL** }  
**No. 9-810** }

**WAR DEPARTMENT**  
**Washington, March 18, 1943**

# **TRUCK, 1½ TON 6X6 (DODGE)**

**Prepared under the direction of the  
 Chief of Ordnance**

**(with the cooperation of the Fargo Motor Corporation,  
 Subsidiary of the Chrysler Corporation)**

## **CONTENTS**

### **PART ONE — Operator's Instructions**

<b>SECTION</b>	<b>Paragraph</b>	<b>Page</b>
I Introduction.....	1-3	4
II Description and tabulated data.....	4-8	5-13
III Vehicle equipment.....	9-12	14 18
IV Operating instructions and controls....	13-33	19 51
V Operation under unusual conditions....	34-39	52-58
VI Lubrication instructions.....	40-44	59-69
VII Preventive maintenance inspections....	45-53	70-82
VIII General care and preservation.....	54 55	83
IX Materiel affected by gas.....	56-59	84 86
X Demolition to prevent capture.....	60 62	87

### **PART TWO — Organization Instructions**

XI General information on maintenance...	63 65	88 101
XII Equipment and special tools.....	66-69	102-109
XIII Organizational spare parts and accessories... ..	70-72	110-117
XIV Engine.....	73-90	118-168
XV Clutch.....	91-95	169-174

**TRUCK, 1½ TON 6X6 (DODGE)**

<b>SECTION</b>		<b>Paragraph</b>	<b>Page</b>
XVI	Fuel system.....	96-117	175-200
XVII	Exhaust system.....	118-123	201-204
XVIII	Cooling system.....	124-137	205-220
XIX	Battery.....	138-144	221-229
XX	Starting system.....	145-151	230-234
XXI	Generating system.....	152-158	235-254
XXII	Ignition system.....	159-173	255-272
XXIII	Lighting system.....	174-197	273-294
XXIV	Wiring.....	198-208	295-308
XXV	Instruments and gages.....	209-220	309-317
XXVI	Transmission and power take-off.....	221-226	318-330
XXVII	Transfer case.....	227-231	331-337
XXVIII	Propeller shafts.....	232-235	338-343
XXIX	Front axle.....	236-247	344-362
XXX	Rear axles.....	248-255	363-374
XXXI	Foot brakes.....	256-266	375-393
XXXII	Hand brake.....	267-273	394-401
XXXIII	Wheels and tires.....	274-282	402-413
XXXIV	Steering.....	283-291	414-429
XXXV	Frame.....	292-296	430-434
XXXVI	Springs and shock absorbers.....	297-308	435-445
XXXVII	Body and sheet metal.....	309-320	446-454
XXXVIII	Winch.....	321-329	455-462
XXXIX	Painting.....	330-335	463-465
XL	Storage and shipment.....	336-340	466-471
XLI	References.....	341-342	472-473
	Index.....		474

# PART ONE—Operator's Instructions

## Section I

### INTRODUCTION

	Paragraph
Purpose and scope.....	1
Content and arrangement of manual.....	2
References.....	3

#### 1. PURPOSE AND SCOPE.

a. The instructions in this manual are for the information and guidance of the personnel of the using arm charged with the operation, maintenance and repair of Dodge 1½ ton six wheel drive (6X6) vehicles. The instructions are for the purpose of describing the function of various units and controls and how to operate the vehicle. In addition, instructions are given for inspection, lubrication, maintenance, minor repairs and unit replacement.

#### 2. CONTENT AND ARRANGEMENT OF MANUAL.

a. The manual is divided in two parts:

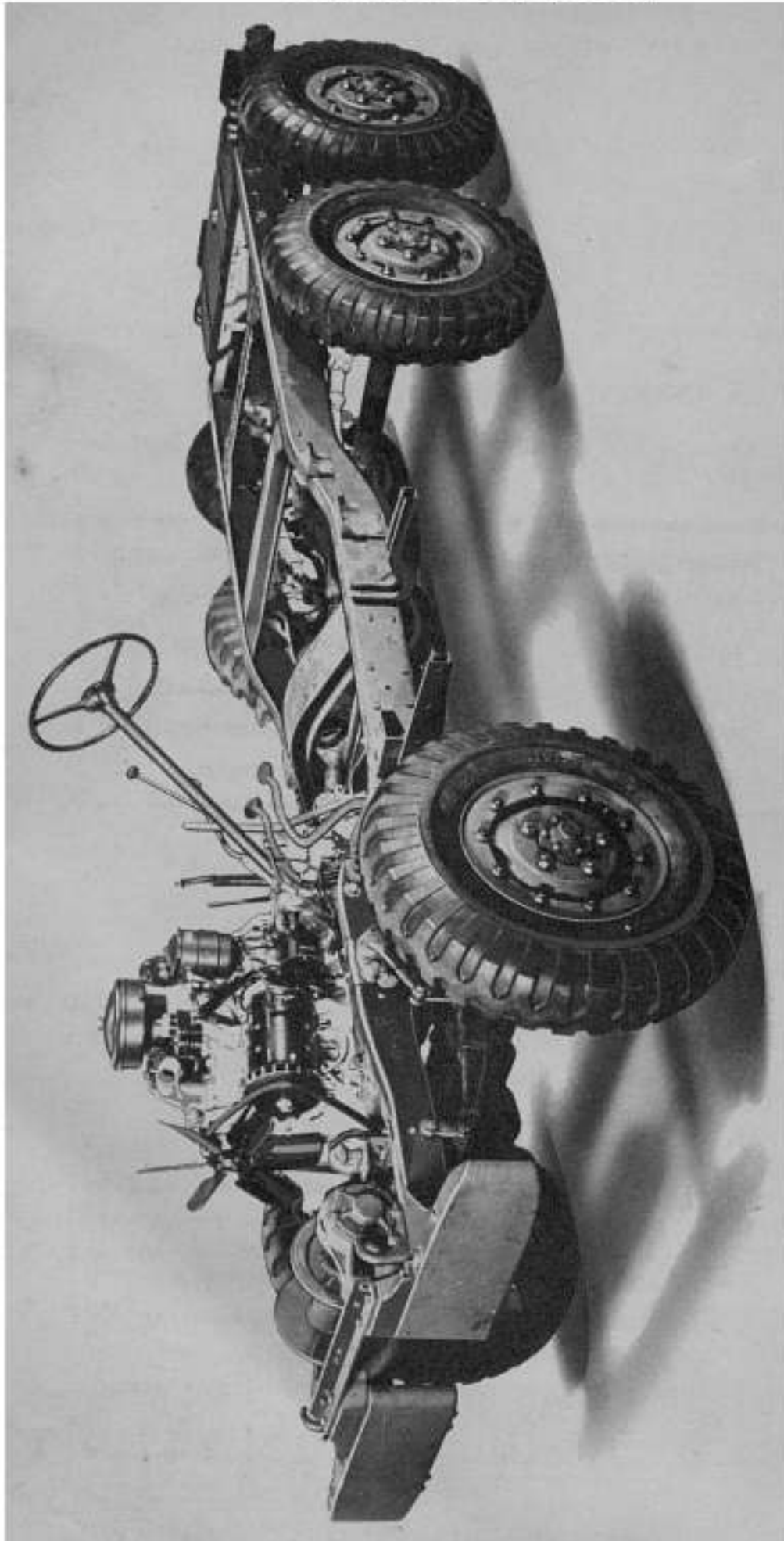
(1) Part One, containing Sections I through X, is for the information and guidance of the operating personnel of the using arm. It contains descriptions of controls and equipment, instruction for driving, lubrication and general care of the vehicles.

(2) Part Two, containing Sections XI through XLI, is for the information and guidance of personnel of the using arm charged with the responsibility of doing maintenance work within their jurisdiction. These sections contain descriptions of major units, trouble shooting and instructions for making minor adjustments, repairs or unit replacement.

#### 3. REFERENCES.

a. Refer to Section XLI for Standard Nomenclature Lists, Technical Manuals and other publications for the materiel described herein.

TRUCK, 1½ TON 6X6 (DODGE)



RA PD 53100

Figure 1—Chassis—1½ Ton 6X6 (Dodge)

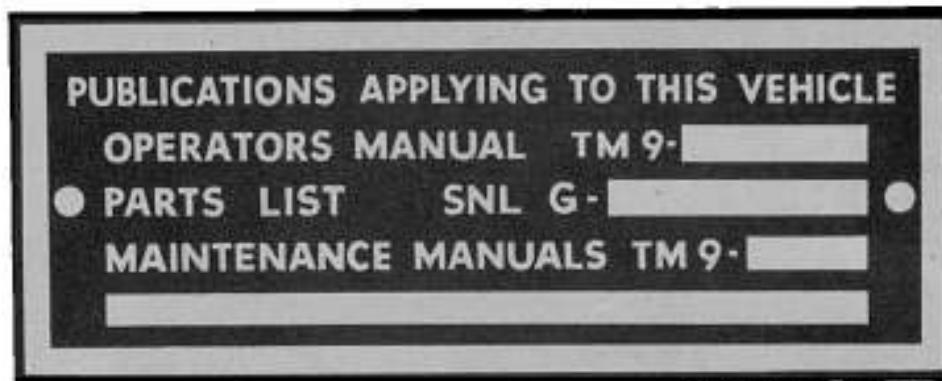
## Section II

## DESCRIPTION AND TABULATED DATA

	Paragraph
Manual identification plate.....	4
Serial number plate.....	5
Description of vehicles.....	6
Tabulated data.....	7
Adjustment specifications.....	8

## 4. MANUAL IDENTIFICATION PLATE.

a. A plate is attached to the instrument panel of each vehicle to designate the "TM" number of the publications applying to the vehicle (fig. 2).

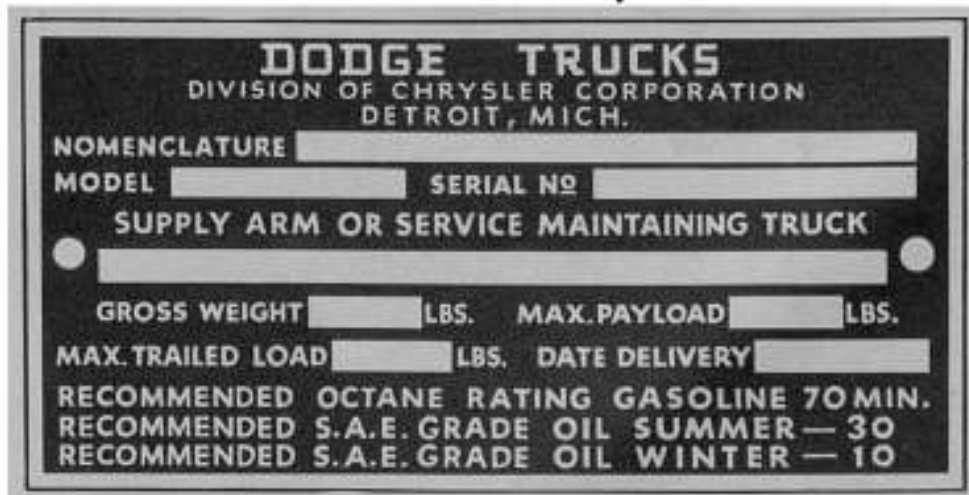


RA PD 52784

Figure 2—Manual Identification Plate

## 5. SERIAL NUMBER PLATE.

a. This plate gives pertinent vehicle information such as model, serial number, weights, fuel and oil recommendations (fig. 3). One is attached to the instrument panel of each vehicle.



RA PD 52710

Figure 3—Serial Number Plate

**TRUCK, 1½ TON 6X6 (DODGE)****6. DESCRIPTION OF VEHICLES.**

- a. The following models of vehicles are covered by this manual:

**Type of Vehicle**

	<b>Model</b>
Personnel and Cargo Truck without Winch.....	WC-62
Personnel and Cargo Truck with Winch.....	WC-63

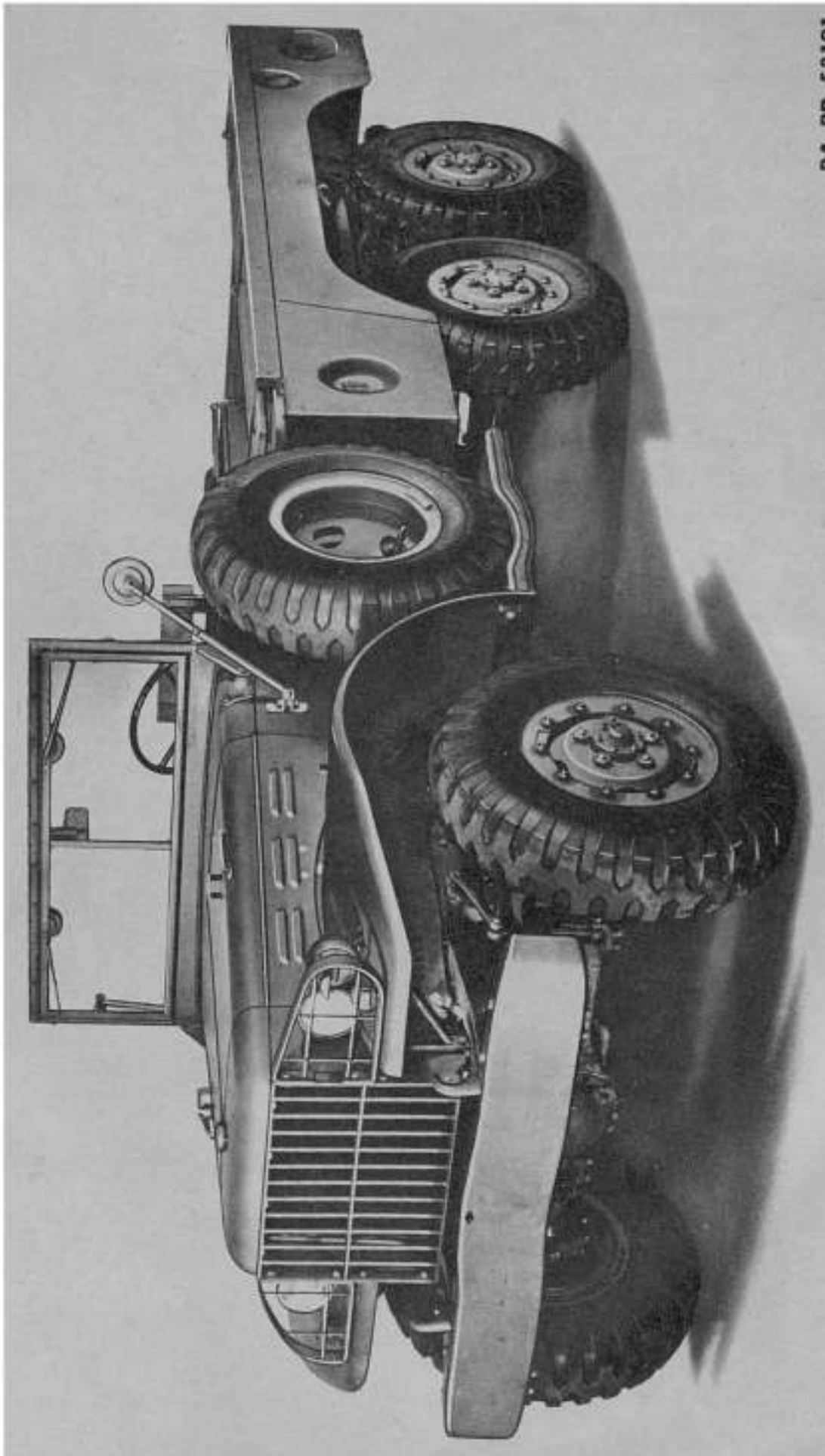
b. The steering gear of both models is mounted on the left side and they are known as "left hand drive" vehicles. Throughout this manual, the use of the terms "left" and "right" indicates positions in relation to the location of the steering gear—"left" means the steering gear side; "right" means the side opposite steering gear.

c. Both models are equipped with a liquid cooled six cylinder L-head gasoline engine, located at the front of the vehicle. Engine power is transmitted from the four speed transmission through a short propeller shaft to the transfer case and thence to both front and rear axles. The vehicles may be driven with power on all six wheels or with the four rear wheels only (fig. 1).

- d. Differences between models (fig. 4, 5, 6 and 7):

(1) The difference between Models WC-62 and WC-63 is that the latter is equipped with a power take-off and a drive shaft for the winch mounted at the front of the vehicle. Both models can be identified by the open driver's compartment and personnel and cargo body with tarpaulin mounted behind the driver's compartment. The electrical system of both models is six volt with the battery located under the hood.

## DESCRIPTION AND TABULATED DATA



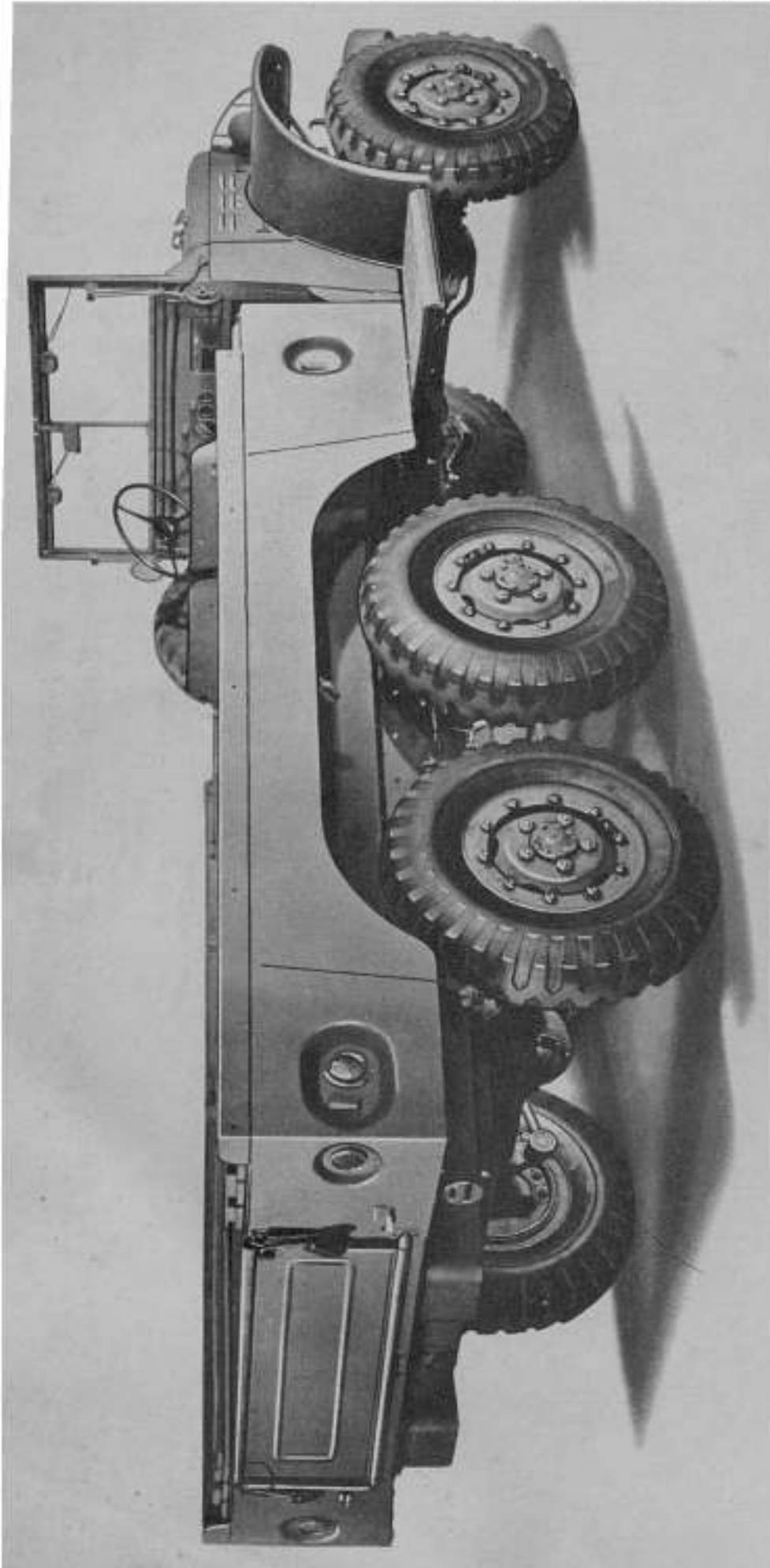
**Figure 4—Personnel and Cargo Truck—Tarpaulin Off—  
Left Front View (Model WC - 62)**



## TRUCK, 1½ TON 6X6 (DODGE)

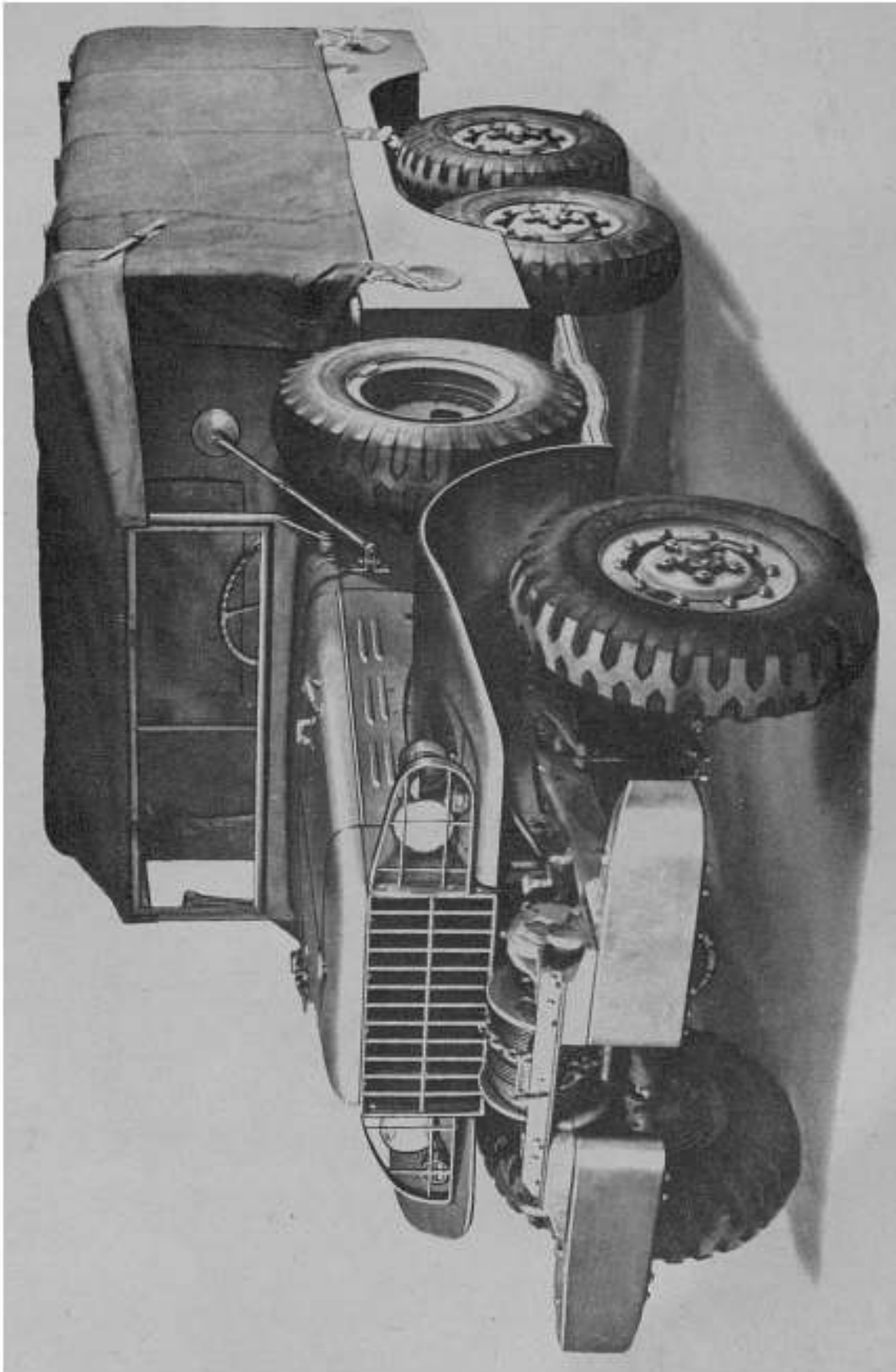
RA PD 53102

**Figure 5—Personnel and Cargo Truck—Tarpaulin Off—  
Right Rear View (Model WC - 62)**



## DESCRIPTION AND TABULATED DATA

RA PD 53103



**Figure 6—Personnel and Cargo Truck with Winch—Tarpaulin On—  
Left Front View (Model WC - 63)**