

MAINTENANCE *Manual*



2½ TON • 6 x 6

Built for

**UNITED STATES ARMY
MODELS CCKW 352 & 353**

General Motors Truck

TM 10-1269

WAR DEPARTMENT

Washington, January 19, 1942

TM 10-1269, Maintenance Manual, Truck, 2½-Ton, 6 x 6 GMC (Models CCKW-352—353) published by the Yellow Truck & Coach Manufacturing Company is furnished for the information and guidance of all concerned.

[AG 062.11 (4-26-41) PC (C), June 10, 1941.]

By order of the Secretary of War:

G. C. MARSHALL,
Chief of Staff

Official:

J. A. ULIO,
Major General,
The Adjutant General

Maintenance Manual

GMC 2½-TON 6 x 6
MODELS CCKW-352 & 353



TM 10-1269

FORM X-4202

Copyright 1942

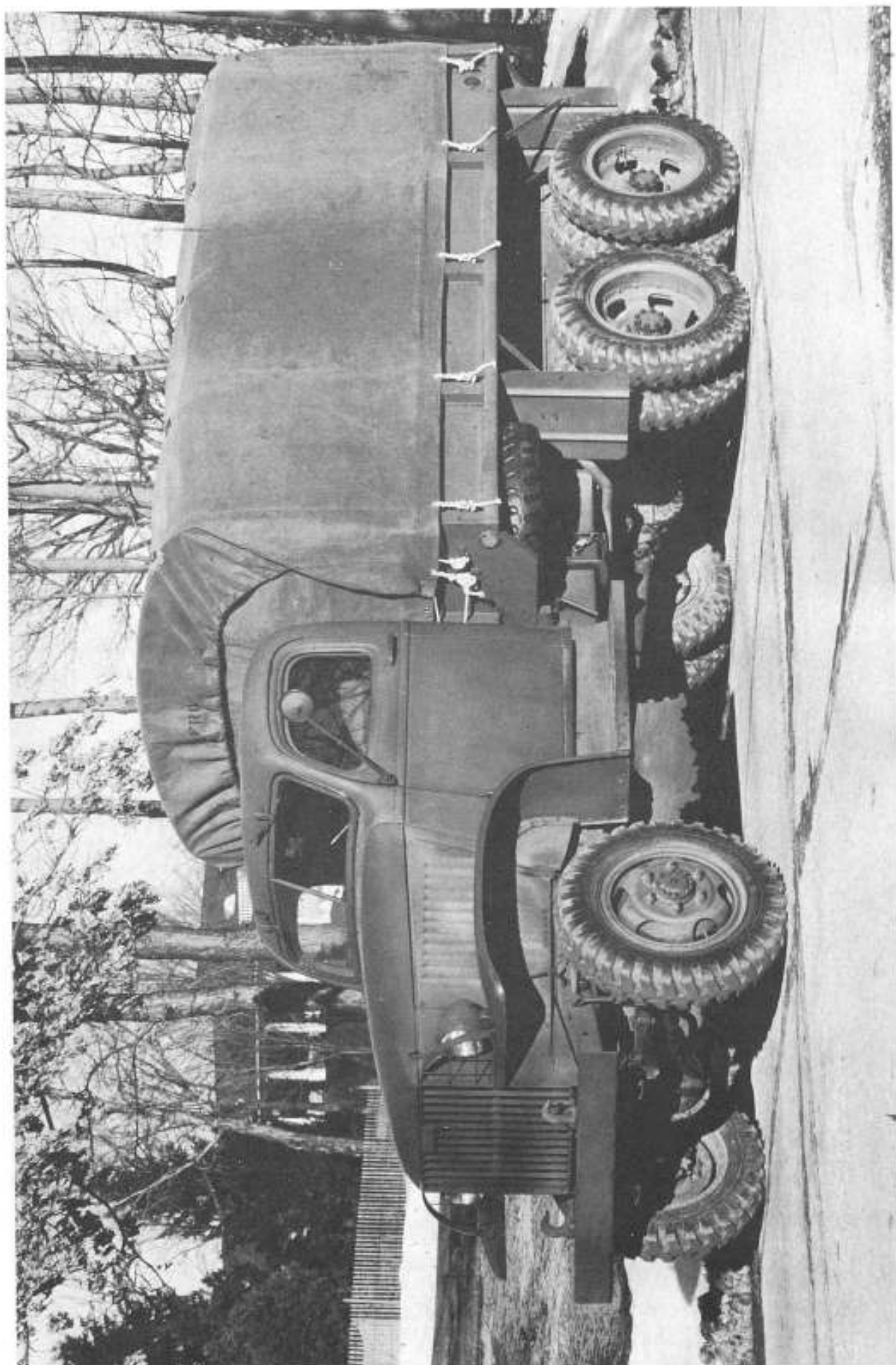
GENERAL MOTORS TRUCK & COACH

DIVISION OF
YELLOW TRUCK & COACH MANUFACTURING COMPANY

PONTIAC, MICHIGAN

Index

- D** DATA
- 1** AXLE, FRONT
- 2** AXLE, REAR
- 3** BODY
- 4** BRAKES
- 5** CLUTCH
- 6** COOLING
- 7** ELECTRICAL
- 8** ENGINE
- 11** FRAME
- 12** FUEL
- 13** LUBRICATION
- 15** SPRINGS
- 16** STEERING
- 17** TRANSMISSION
- 18** PROPELLER SHAFT
- 19** WHEELS
- W** WINCH
- I** INDEX



GMC TRUCK 2 1/2-TON 6x6 TRUCK

(Model illustrated is 164" wheelbase—is not equipped with winch)

Introduction

This maintenance manual has been especially prepared to cover GMC trucks built for the United States Army and is published for the information and guidance of all concerned.

If the utmost in performance and reliability are to be expected, good driving practices should always be observed and each truck periodically inspected in order to make necessary adjustments and perform needed service at the right place at the right time.

All information essential to the proper maintenance and repair of these trucks is contained in this manual. All who are charged with the responsibility of performing such service or with driving the vehicles should study this book thoroughly and refer to it frequently.

GMC MAINTENANCE MANUAL

MODEL IDENTIFICATION

THE MODEL OF EACH VEHICLE AFFORDS A POSITIVE MEANS
OF IDENTIFYING AXLE AND WINCH APPLICATION FOR EACH
TRUCK. THE BASIC MODEL (CCKW-352 OR 3) IS SUFFIXED
WITH A LETTER AND NUMBER, EACH OF WHICH INDICATE UNIT

APPLICATION:

"A" - CARGO BODY - NO WINCH
"B" - CARGO BODY - WITH WINCH
"C" - STOCK RACK
"D" - TANK - NO WINCH
"E" - TANK - WITH WINCH

"1" - SPLIT HOUSING TYPE AXLES
"2" - BANJO HOUSING TYPE AXLES

MODEL CCKW-352 - 145" WHEELBASE
MODEL CCKW-353 - 164" WHEELBASE

A COMBINATION OF THE ABOVE SYMBOLS APPEARS WITH
MODEL AND CHASSIS SERIAL NUMBER ON RIGHT HAND FRAME
SIDE RAIL ABOVE FRONT SPRING.

GMC MAINTENANCE MANUAL

Unit Index



FOLLOWING INDEX LISTS VARIOUS SECTION NUMBERS WHICH DESCRIBE UNITS USED ON THESE VEHICLES TOGETHER WITH TYPE OF VEHICLE TO WHICH THEY APPLY. REFERENCE SHOULD BE MADE TO "VEHICLE IDENTIFICATION" LISTING IN INTRODUCTORY PAGES OF THIS BOOK TO DETERMINE SERIAL NUMBERS OF VEHICLES EQUIPPED WITH BANJO OR SPLIT TYPE AXLE HOUSINGS.

| Section Name In Order Shown | Type of Axle Housing Used on Vehicle | |
|---------------------------------------|--------------------------------------|--------------------------------------|
| | Banjo Type Housing Section Number | Split Type Housing Section Number |
| DRIVER'S INSTRUCTIONS | DR.750 | DR.750 |
| FRONT AXLE | 1.9001A | 1.9401 |
| REAR AXLE | 2.10501 | 2.10601 |
| CAB | 3.3801 | 3.3801 |
| BRAKES | 4.11801 | 4.11801 |
| CLUTCH | 5.9101 | 5.9101 |
| COOLING SYSTEM | 6.9901 | 6.9901 |
| WIRING | 7W.1451 | 7W.1451 |
| STARTING MOTOR AND BATTERY | 7S.0551B | 7S.0551B |
| DISTRIBUTOR, COIL, AND SPARK PLUGS | 7D.0701 | 7D.0701 |
| GENERATOR AND CONTROL | 7G.0801 | 7G.0801 |
| LIGHTING EQUIPMENT | 7L.0751B | 7L.0751B |
| MISCELLANEOUS ELECTRICAL | 7M.0351 | 7M.0351 |
| ENGINE | 8.9901 | 8.9901 |
| FRAME | 11.6001 | 11.6001 |
| FUEL SYSTEM | 12.10701 | 12.10701 |
| LUBRICATION | 13.1351 | 13.1351 |
| SPRINGS | 15.6701 | 15.6701 |
| STEERING GEAR | 16.9201 | 16.9201 |
| TRANSMISSION | 17.14801 | 17.14801 |
| TRANSFER CASE | 17.14901 | 17.15001 |
| POWER TAKE-OFF | 17.15101 | 17.15101 |
| PROPELLER SHAFTS | 18.9601 | 18.9601 |
| WHEELS, HUBS, AND BEARING | 19.9801 | 19.9801 |
| WINCH | W.051 | W.051 |

G M C MAINTENANCE MANUAL

General Data

Engine

| | |
|-------------------------------------|----------|
| Type----- | 270 |
| Horsepower - S.A.E.----- | 34.35 |
| Displacement - Cu. In.----- | 269.5 |
| Bore----- | 3-25/32" |
| Stroke----- | 4" |
| Cylinders----- | 6 |
| Engine Governed Speed (R.P.M.)----- | 2750 |

Capacities

| | |
|--|--------|
| Fuel Tank - (Gals.)----- | 40 |
| Engine Crankcase - Refill (Qts.)----- | 10 |
| Cooling System (Qts.)----- | 19 |
| Transmission(Pts.or Lbs.)(Without Power Take-Off)----- | 13 |
| Transmission(Pts.or Lbs.)(With Power Take-Off)----- | 14 |
| Oil Bath Air Cleaner (Qts.)----- | 1 |
| Winch(For Trucks So Equipped)(Pts.or Lbs.)----- | 3-3/4 |
| <u>Models CCKW-352 & 3---A1 and B1</u> | |
| Vehicles With Split Housing Type Axles(Refill) | |
| Transfer Case (Pts.or Lbs.)----- | 7 |
| Front Axle Differential(Pts.or Lbs.)----- | 7 |
| Rear Axle Differential(Pts.or Lbs.)----- | 7 |
| <u>Models CCKW-352 & 3---A2 and B2</u> | |
| Vehicles With Banjo Type Axles (Refill) | |
| Transfer Case (Pts. or Lbs.)----- | 4 |
| Front Axle Differential (Pts. or Lbs.)----- | 13-1/2 |
| Rear Axle Differential (Pts. or Lbs.)----- | 17 |

TORQUE FOR TIGHTENING BOLTS AND NUTS

REFER TO LAST PAGES OF BOOK FOR TORQUE IN
FOOT POUNDS AT WHICH VARIOUS CHASSIS AND ENGINE
BOLTS AND NUTS SHOULD BE TIGHTENED.

Serial Number and Model Number Locations

Specify Chassis Serial Number and Engine Serial Number in all references to vehicles covered by this publication. Specify Model or Serial Number of units of vehicle whenever service on these items is required.



WINCH—Number plate located at filler plug.



GENERATOR—Model number on plate at pulley end of generator.



GOVERNOR—Model number stamped on governor name plate.



CARBURETOR—Model number stamped on disc near cleanout plug.



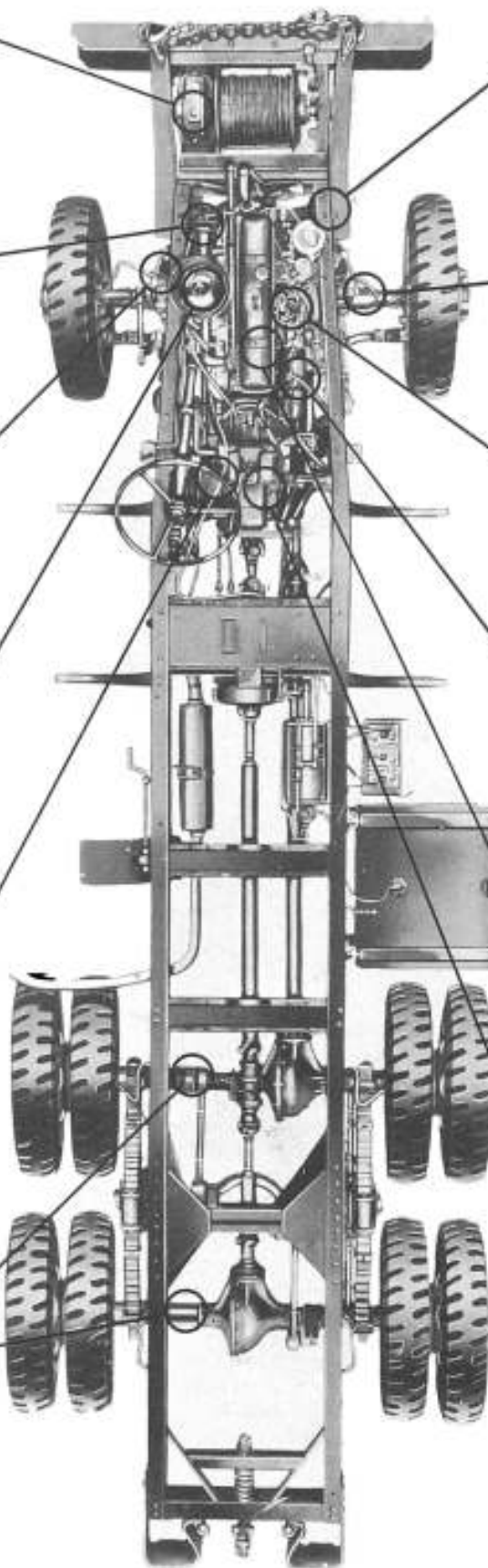
POWER TAKE-OFF—Serial number plate on L. H. side of housing.



REAR AXLE—Stamped on axle housing tube (short side).



CARGO BODY—Model number plate on lower L. H. front corner of body.



CHASSIS SERIAL NO.—Stamped on R. H. frame side rail above front spring.



FRONT AXLE—Stamped on R. H. side of housing.



DISTRIBUTOR—Model number plate on body of distributor.



STARTING MOTOR—Model number plate on side of motor.



ENGINE—Serial number plate on L. H. of crankcase—also stamped on R. H. side of crankcase near distributor.



TRANSMISSION—Model number appears on name plate on L. H. side of transmission case.



CAB & VOLTAGE REGULATOR—Cab serial number plate on L. H. of cowl under hood. Regulator model number plate appears on cover of regulator.

GMC 6 x 6

TM 10-1269 X-4202

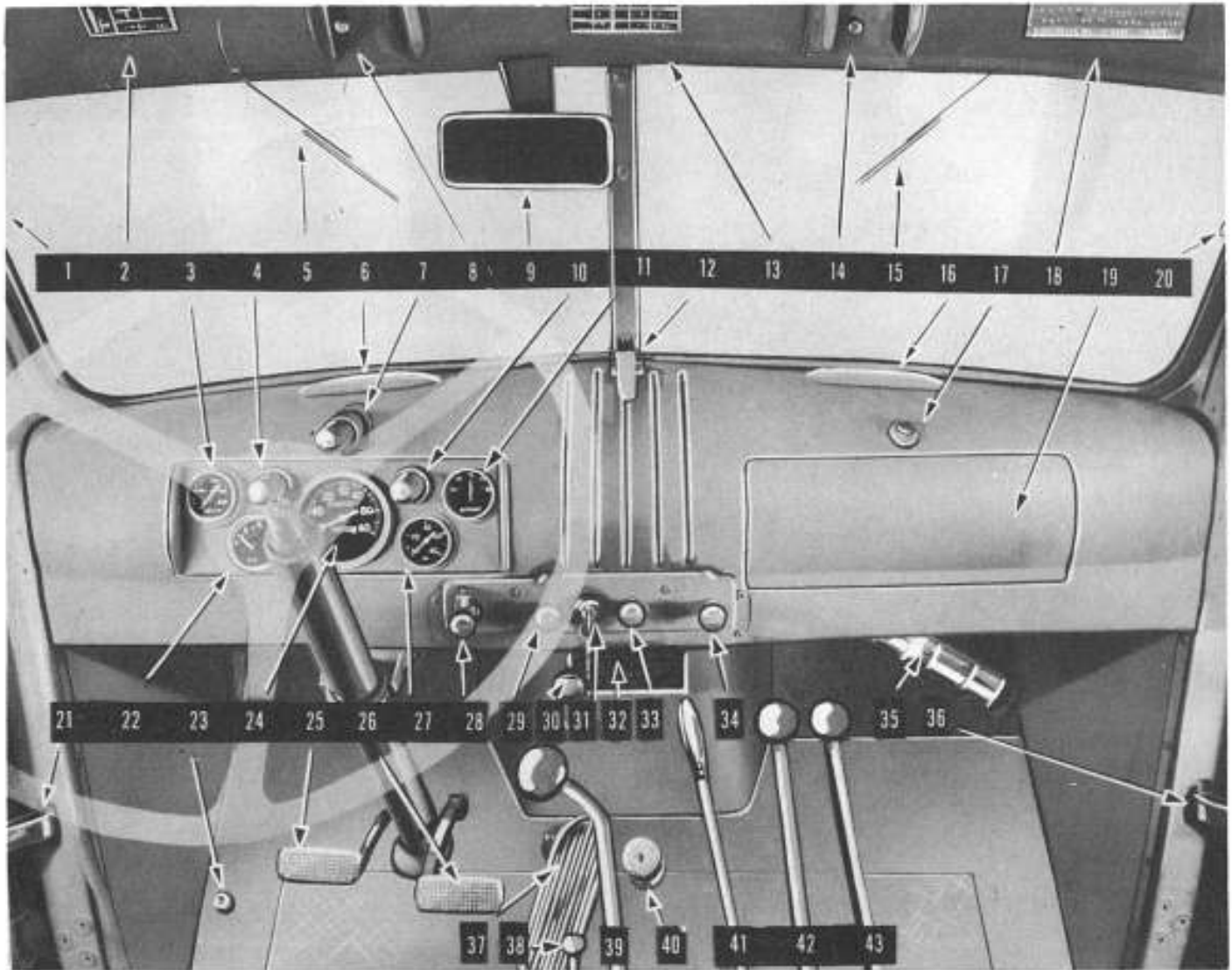


Fig. 1 Interior of Driver's Cab - Showing Controls and Instruments.

- | | | |
|--|--|---|
| 1. L.H. Windshield Quadrant Thumb Screw | 15. Windshield Wiper Blade R.H. | 30. Ventilator Control Handle |
| 2. Shifting Instruction Plate | 16. Defroster Opening - R.H. | 31. Ignition Key and Switch |
| 3. Temperature Gauge | 17. Package Compartment Door Lock | 32. Serial Number Plate |
| 4. Temperature and Fuel Gauge Light | 18. Winch Operating Plate - (on trucks with winch) | 33. Choke Button |
| 5. Windshield Wiper Blade L.H. | 19. Package Compartment | 34. Instrument Panel Light Switch |
| 6. Defroster Opening - L.H. | 20. R.H. Windshield Quadrant Adjusting Screw | 35. Fire Extinguisher |
| 7. Instrument Light | 21. Door Check Strap | 36. Door Check Strap |
| 8. L.H. Windshield Wiper Control Button | 22. Fuel Gauge | 37. Accelerator Pedal |
| 9. Rear View Mirror | 23. Dimmer Switch | 38. Power Take-Off Lever - (on trucks with winch) |
| 10. Ammeter and Oil Gauge Light | 24. Speedometer | 39. Transmission Shift Lever |
| 11. Ammeter | 25. Clutch Pedal | 40. Starter Button |
| 12. Windshield Lock | 26. Brake Pedal | 41. Hand Brake Lever |
| 13. Road Speed Caution Plate | 27. Oil Gauge | 42. Transfer Case High and Low Shift Lever |
| 14. R.H. Windshield Wiper Control Button | 28. Light Switch | 43. Transfer Case Front Axle Declutching Lever |
| | 29. Throttle Button | |

PUBLICATIONS APPLYING TO THIS VEHICLE
PARTS LIST TM-10-1268
MAINTENANCE MANUAL TM-10-1269

"Publication Plate" - gives TM number of Maintenance Manual and Parts Book application to each vehicle.