

ARMY SERVICE FORCES CATALOG

ORD 9

SNL G-532
List of All Service Parts

ORDNANCE SUPPLY CATALOG

GROUP G

Technical Reference { **TM 10-1479**
TM 10-1679

List of All Service Parts

for

TRUCK, 7¹/₂-TON, 6 x 6 PRIME MOVER w/WINCH (Mack Models NO 2, 3, 6 and 7)

(Parts Formerly listed in TM 10-1478, 2nd edition, dated
October 1943 are now included in this SNL G-532)

Reproduction intégrale du document américain.

HEADQUARTERS, ARMY SERVICE FORCES, 15 JULY 1945

Tirage : Novembre 1961

Headquarters, Army Service Forces,

Washington 25, D. C., 15 July 1945

Army Service Forces Ordnance Supply Catalog, ORD 9, SNL G-532, List of All Service Parts for Truck, 7 $\frac{1}{2}$ -ton, 6X6, Prime Mover. (Mack Models NO 2, 3, 6 and* 7) has been prepared under the supervision of the Chief of Ordnance and is published for the information and guidance of all concerned.

SPX 400.152 (14 June 1945).

By command of General SOMERVELL:

Le R. LUTES,
Major General, General Staff Corps,
Chief of Staff.

OFFICIAL:

J. A. ULIO,
Major General,
The Adjutant General.

DISTRIBUTION: AAF (10); AGF (10); ASF (2); T of Opn (10); Arm & Sv Bd (1); S Div ASF (1); Tech Sv (2); Sv C (10); PC&S (1) except Air Bases (0); PE ORD O (5); Dist O 9 (5); Dist Br O 9 (3); Reg O 9 (3); Establishment 9 (except AM Establishments) (5); Decentralized Sub-O 9 (3); Tk Dep 9 (5); Gen & Sp Sv Sch (10); USMA (2); A (10); CHQ (10); D (2); R 9 (2); Bn 9 (2); C 9 (3)

For explanation of symbols see FM 21-6.

ARMY SERVICE FORCES CATALOG

ORD 9 **SNL G-532**
List of All Service Parts

ORDNANCE SUPPLY CATALOG

GROUP G

Technical Reference { **TM 10-1479**
 TM 10-1679

List of All Service Parts

for

TRUCK, 7½-TON, 6x6 PRIME MOVER w/WINCH

Mack Models NO 2, 3, 6 and 7

GENERAL INFORMATION: This is a list of all items of Service for the Truck, 7½ ton, 6 x 6 Prime Mover (Mack Models NO 2, 3, 6 and 7) arranged according to standardized government grouping. **WARNING:** Many of the parts listed herein are not stocked for issue. See ORD 7 and 8 of the appropriate major combination SNL for those parts stocked for issue. In case parts not listed in ORD 8 are needed, separate requisitions for these parts should be forwarded through normal supply channels with justification therefor.

This list of all service parts is to be used for identification and storage purposes. Every individual part is not necessarily stored by itself; in fact, many parts are stored as authorized assemblies. Such assemblies are indicated herein. The components, however, of such assemblies are listed alphabetically within the group with the number of each particular part required per unit assembly.

Quick Reference Index

GENERAL INFORMATION

ORD 9

LIST OF ALL SERVICE PARTS

- | | |
|--|---|
| 01 | ENGINE |
| 02 | CLUTCH |
| 03 | FUEL |
| 04 | EXHAUST SYSTEM |
| 05 | COOLING SYSTEM |
| 06 | ELECTRICAL |
| 07 | TRANSMISSION |
| 08 | TRANSFER |
| 09 | PROPELLER SHAFT AND
UNIVERSAL JOINTS |
| 10 | FRONT AXLE |
| 11 | REAR AXLE |
| 12 | BRAKES |
| 13 | WHEELS, HUBS AND DRUMS |
| 14 | STEERING |
| 15 | FRAME AND BRACKETS |
| 16 | SPRINGS AND SHOCK
ABSORBERS |
| 17 | HOODS, FENDERS, RUNNING
BOARDS, ETC. |
| 18 | BODIES |
| 20 | WINCH, HOIST AND POWER
TAKE-OFF |
| 21 | BUMPERS AND GUARDS |
| 22 | MISC. BODY, CHASSIS AND
ACCESSORIES |
| 23 | GENERAL USE
STANDARDIZED PARTS |
| 26 | RADIO |
| ARMAMENT, SIGHTING AND
FIRE CONTROL EQUIPMENT | |

INDEXES

GENERAL INFORMATION (Continued)

For full information relative to the Ordnance Supply Catalog, the procedure followed and the principles employed in their compilation, together with the purposes and uses thereof, see ORD 1, Introduction; ORD 2, Index; and the (OPSR) Ordnance Provision System Regulations.

FEDERAL STOCK NUMBER: Classification Codes for Federal Stock Numbers listed herein will be found in ORD 5-2 "Stock List".

SPECIAL INFORMATION: The major item covered by this catalog is designated as a general purpose vehicle as defined in paragraph 3, AR 850-15, dated 28 August 1943.

Components of Kits, Sets and Assemblies: Whenever any doubt might exist as to the components of an assembly, an explanatory statement or a complete listing of components is furnished. For all KITS and SETS a complete listing of components is given. Wherever separate items are shown which are also part of a KIT or SET that fact is stated following the nomenclature of the separate item.

Attaching Parts: Attaching parts such as bolts, nuts, rivets, screws and washers are indented immediately under the part or assembly which they attach. Whenever two similar items, such as right and left hand brackets have the same attaching parts, the attaching parts are listed only after the last of the similar parts. The quantities shown for the attaching parts are for both right and left hand brackets.

Illustrations: This catalog contains various illustrations to aid the user in locating and identifying parts. These are so placed as to be convenient for reference in connection with the text. For each part identified on an illustration the noun, part number and group number of the item is given. An index of illustrations by number, title and page is included with other indexes at the back of the book.

Indexes: Complete indexes, alphabetical and numerical, are furnished at the back of the book. These indexes and contents are explained in brief paragraphs at the beginning of each index.

Stock Numbers: The prefix of the SNL type stock number (i.e. G067, G502, etc.) signifies that the particular part or component was originally coded under the major item designation for that SNL and does NOT mean that the part is used only in that major item. All subsequent lists include that same part will show the identical stock number.

Identification Plates for Vehicle and Principal Components:

The locations of identification and serial number markings on this vehicle are as follows:

Chassis—Model and Serial Number etched on plate on instrument board.

—Serial Number stamped on front end of frame left side member.

Engine—Serial Number stamped on right side of timing gear cover.

Transmission—Model and Serial Number stamped on right side, upper rear corner of case.

Front Axle—Serial Number stamped on right side of carrier housing.

Rear Axle—Model and Serial Number stamped on right front side of carrier housing.

Winch—Model and Serial Number stamped on plate on gear case (Under side of assembly).

Definition of Locational Terms:

The location of some items is indicated by "l.h." or "r.h." "l.h." means that the item is to the left of a similar item designated "r.h." as viewed from the driver's seat. The terms "front" or "forward" and "rear" are applied from this same point of view.

How to Find Parts: This catalog is arranged and cross-indexed so that parts can be found easily even though only one of the several identifying factors is known. The various ways in which parts can be located are as follows:

If the nomenclature (basic name) only is known, refer to the alphabetical index in the back of the book. This index will give the subgroup in which the part is listed. As the part names are arranged in alphabetical order within the subgroups, the complete listing of the part can readily be found.

If any one of the numbers—Ordnance, manufacturers' or stock—is known, refer to the numerical index in the back of the book. This index will give the subgroup number in which the part is listed. By checking in the appropriate number column in that subgroup, the complete listing of the part can readily be found.

If the use, function or location, of the part is known, refer to the illustration index to determine on which the part in question is most likely to appear. Then turn to the proper illustration and pick the proper part from which reference to the proper nomenclature, part and stock number, etc. can be determined. Also reference to the standardized government grouping immediately following this explanation will be of help in selecting parts upon a functional basis.

Notice: of discrepancies or suggested changes should be directed to Office, Chief of Ordnance—Detroit, Maintenance Division, Military Publications Branch, SPOMM-BM, Detroit 32, Michigan.

Standardized Government Grouping: The parts listed in this catalog are arranged by groups and subgroups and alphabetically within these groups. Parts are grouped primarily on the basis of their function. This arrangement facilitates location and selection of parts. See "How to Find Parts" immediately preceding.

STANDARDIZED GOVERNMENT GROUPING

01—ENGINE GROUP

0100 Engine Assembly
 0101 Cylinder Block w/Upper Crankcase
 0101B Cylinder Head
 0102 Crankshaft
 0102A Crankshaft Bearings
 0102B Vibration Damper
 0103 Pistons
 0103A Rings
 0103B Piston Pins
 0104 Connecting Rods
 0104A Connecting Rod Bearings
 0105 Valves, Seats, Guides and Springs
 0105A Tappets or Lifts
 0105B Push Rods, Rocker Arms and Shafts
 0105C Push Rod Covers and Gaskets
 0105D Valve Covers and Gaskets
 0106 Camshaft
 0106A Camshaft Bearings
 0106B Timing Gears
 0106D Gear Case Cover and Gaskets
 0107 Oil Pump
 0107A Oil Pan (Crankcase, lower)
 0107E Oil Filter
 0107F Oil Filter Attaching Parts
 0107G Oil Filler and Oil Breather
 0107H Level Gauge
 0107J Oil Lines and Fittings
 0107K Oil Pressure Regulator
 0107L Viscometer
 0107N Crankcase Ventilator
 0108A Intake Manifolds
 0108B Exhaust Manifolds
 0109 Flywheel
 0109B Ring Gear
 0110 Engine Mountings
 0113B Accessory Drive

0502 Thermostat
 0503 Water Pump
 0503A Fans
 0503B Fan and Generator Belts
 0503D Fan Shroud
 0504 Radiator Mountings
 0505 Engine Water Fittings and Hose

06—ELECTRICAL GROUP

0601 Generator
 0601A Generator Attaching Parts
 0601B Generator Regulator
 0601B-1 Generator Regulator Voltage Regulator Unit
 0601B-2 Generator Regulator Current Regulator Unit
 0601B-3 Generator Regulator Cutout Relay Unit
 0602 Cranking Motor
 0602A Cranking Motor Magnetic Switch
 0602B Cranking Motor Series Parallel Switch
 0603 Distributor
 0603B Distributor Vacuum Control Unit
 0604 Ignition Coil
 0604A Ignition Wiring
 0604B Spark Plugs
 0604C Ignition Lock Switch
 0605 Instruments
 0605C Panel Light
 0606 Switches
 0606B Chassis Wiring
 0606D Circuit Breakers
 0606E Terminal Boxes
 0606F Trailer Electric Coupling Parts
 0607 Headlights
 0607A Lamp-Units (sealed beams)
 0607B Lamps
 0607D Parking and/or Blackout Lights
 0608 Tail Lights
 0608A Auxiliary Lights
 0609 Horns
 0609A Horn Button
 0610 Battery
 0610A Battery Hangers and/or Box
 0610B Starting Cables, Connections

02—CLUTCH GROUP

0200 Clutch Assembly
 0201 Clutch Disc
 0201A Facings and Rivets
 0202 Cover, Pressure Plates and Springs
 0202A Clutch Pressure Levers
 0203 Release Yoke, Bearings and Fork
 0204 Pedal
 0204A Pedal Linkage
 0205 Pilot Bearing
 0207 Clutch Housing

03—FUEL GROUP

0300 Fuel Tank
 0300A Tank Gauge Unit
 0301 Carburetor
 0301B Choke Control
 0301C Air Cleaner
 0302 Fuel Pump
 0303 Accelerator and Linkage
 0303A Hand Throttle and Linkage
 0304 Fuel Lines
 0305 Governor
 0305A Governor Spark Controls
 0306 Fuel Filters

04—EXHAUST GROUP

0401 Muffler
 0402 Exhaust Pipe
 0402A Tail Pipe

05—COOLING GROUP

0501A Shell
 0501B Core
 0501H Shutter

07—TRANSMISSION GROUP

0700 Transmission Assembly
 0701 Case
 0703 Main Drive Pinion and Bearings
 0704 Main Shaft and Bearings
 0704B Gears
 0704C Countershaft and Reverse Idler Shaft and Bearings
 0706 Gear Shift Cover or Housing
 0706A Gear Shift Lever and Parts
 0706B Gear Shifter Rails and Parts
 0706C Gear Shifter Yokes or Forks

08—TRANSFER GROUP

0801 Case
 0802A Spline Shaft, Gears, Bearings and Parts
 0803A Countershaft, Gears, Bearings and Parts
 0804B Front Drive Shaft, Gears, Bearings and Parts
 0804C Main Drive Shaft, Gears, Bearings and Parts
 0805 Shifter Shafts
 0805A Yokes
 0805B Shift Levers
 0805C Declutch Lever and Parts
 0805D Gear Shift Cover
 0810 Speedometer Drive Gears

09—PROPELLER SHAFT AND UNIVERSAL JOINT GROUP

0901 Propeller Shaft Assemblies
 0902 Universal Joints

STANDARDIZED GOVERNMENT GROUPING (Continued)**10—FRONT AXLE GROUP**

- 1000 Front Axle Assembly
- 1001 Housing
- 1002 Differential and Carrier Assembly
- 1003 Differential Gears, Pinions and Bearings
- 1006 Steering Knuckle, Flange, Arms and Pin
- 1007 Axle Shafts
- 1007A Wheel Drive Housing, Gears and Bearings

11—REAR AXLE GROUP

- 1100 Rear Axle Assembly
- 1101 Housing Assembly
- 1102 Axle Drive Shafts
- 1103 Differential and Carrier Assembly, forward rear and rear rear axles
- 1103-1 Differential and Carrier Assembly, forward rear axle, only
- 1103-2 Differential and Carrier Assembly, rear rear axle, only
- 1104 Differential Case, Gears, Pinions and Bearings, forward rear and rear rear axle
- 1104-1 Differential Case, Gears, Pinions and Bearings, forward rear axle only
- 1104-2 Differential Case, Gears, Pinions and Bearings, rear rear axle only

12—BRAKE GROUP

- 1201 Hand Brake
- 1202 Shoes and Facings
- 1203 Brake Shoe Support
- 1203C Slack Adjuster
- 1203D Brake Cams
- 1207A Brake Diaphragm Chambers (front)
- 1207B Brake Diaphragm Chambers (rear)
- 1209B Hoses
- 1209C Tubes, Clips and Tube Connectors
- 1209E Relay Valve
- 1209F Foot Brake Valve
- 1209G Quick Release Valve
- 1209H Double Check Valve
- 1209H-1 Single Check Valve
- 1209J Reservoir Tank
- 1209K Safety Valve
- 1209L Air Compressor Governor
- 1209M Low Pressure Indicator
- 1209P Trailer Connections
- 1209Q Tire Inflation Valve
- 1209R Hand Control Valve
- 1213 Air Compressor Assembly

13—WHEEL, HUBS AND DRUM GROUP

- 1301 Wheel Assembly
- 1301A Bearings
- 1301B Seals
- 1302 Hubs and Drums
- 1302A Wheel Studs and Nuts

14—STEERING GROUP

- 1401 Steering Connecting Rod Drag Link
- 1402 Tie Rod
- 1403 Gear Assembly
- 1403A Steering Gear Parts
- 1404 Wheel Assembly
- 1405 Brackets

15—FRAME AND BRACKETS GROUP

- 1500 Frame and Brackets
- 1501 Towing Attachments
- 1502 Pintle Hook
- 1505 Spare Wheel Carrier and Tire Lock

16—SPRING AND SHOCK ABSORBER GROUP

- 1601 Front Springs
- 1601A Rear Springs
- 1601C Spring Bumpers

- 1602 Shackles and Spring Attaching Parts
- 1602A Trunnion
- 1603 Shock Absorbers and Mountings
- 1604A Torque Rods

17—HOOD, FENDERS, RUNNING BOARDS, APRONS AND MISCELLANEOUS SHEET METAL GROUP

- 1701 Fenders
- 1703 Running Boards (Cab Steps)
- 1704 Hood

18—BODY GROUP

- 1800 Body
- 1800A Cab Assembly
- 1800B Cab Top and Curtains
- 1800C Dash
- 1800D Cab Mounting Parts
- 1800E Cab Sill
- 1802A Body Panels
- 1802B Body Stakes
- 1802C Body Gates and Steps
- 1802D Body Bows, Hooks and Straps
- 1802E Splash Guards
- 1802F Tail and Stop Lamp Housing
- 1803 Floor Mats and Seals
- 1803A Floor Boards
- 1804 Seats
- 1805 Door Assemblies
- 1805A Door Hinge
- 1805C Door Handle
- 1809 Instrument Panel and Mounting Parts
- 1809A Compartment and Parts
- 1811 Windshield Assembly
- 1811B Windshield Frame, Moulding and Seals
- 1811C Windshield Wiper Assembly
- 1811D Windshield Wiper Parts
- 1811D-1 Windshield Wiper Connections, Tubing and Valve
- 1811E Windshield Wiper Arm and Blade
- 1817 Tool Box
- 1820 Gun Supports and Brackets

20—WINCH, HOIST AND POWER TAKE-OFF GROUP

- 2000 Winch Assembly
- 2001 Winch Parts and Winch Drive Shafts
- 2002 Cables and Chains
- 2003 Winch Control Parts
- 2010 Hoist Assembly
- 2010E Hoist Mounting Parts
- 2012 Power Take-off Assembly

21—BUMPERS AND GUARDS GROUP

- 2101 Bumpers
- 2102 Bumper Brackets
- 2103 Radiator Guard
- 2103A Headlight Guards

22—MISCELLANEOUS BODY CHASSIS AND ACCESSORIES GROUP

- 2201 Tarpaulins
- 2202 Rear View Mirrors
- 2203 Identification and Caution Plates
- 2203A Reflector Jewel
- 2204 Speedometers and Parts
- 2205 Tachometer Assembly Parts
- 2211 Air Horns and Parts

23—GENERAL USE STANDARDIZED PARTS GROUP

- 2306 Tire and Tubes, Valve Caps, Insides

26—RADIO GROUP

- 2603 Radio Suppression System Parts

MANUFACTURERS' IDENTIFICATION SYMBOLS

Listed below are the symbols used as prefixes to the manufacturers' part and drawing numbers appearing in this book. The symbol indicates the manufacturer whose part number is used for each item.

<i>Symbol</i>	<i>Name</i>	<i>Address</i>
AC	A. C. Spark Plug Div. (General Motors Corp.)	Flint, Michigan
AD	Alemite Div. (Stewart-Warner Corp.)	Chicago, Ill.
AM	Air-Maze Corp.	313. Caxton Bldg., Cleveland, Ohio
BN	The Bantam Bearing Corporation	3702 W. Sample St., South Bend, Ind.
BPC	Bowen Products Corporation	Mill St. & 4th, Ecorse, Mich.
BRT	Brewer-Tichener Corp.	Port Watson St., Cortland, N. Y.
BW	Budd Wheel Co.	12141 Charlevoix, Detroit, Mich.
BWE	Bendix-Westinghouse Automotive Air Brake Co.	Elyria, Ohio
CB	Corcoran-Brown Lamp Co. (The)	4900 Spring Gr. Ave., Cincinnati, Ohio
CM	The Chicago Rawhide Mfg. Co.	1303 Elston Ave., Chicago, Ill.
CP	Champion Spark Plug Co.	Toledo, Ohio
DM	H. A. Douglas Mfg. Co.	Bronson, Mich.
DN	Donaldson Co., Inc.	666 Pelham St., St. Paul, Minn.
DR	Delco-Remy Div. (General Motors Corp.)	Anderson, Ind.
EAT	Eaton Mfg. Co. (The)	Cleveland, Ohio
ES	Electric Storage Battery Co.	1940 Hughes St., Bristol, Conn.
GTS	Gits Bros. Mfg. Co.	1848 S. Kilbourne Ave., Chicago, Ill.
GW	Gar Wood Industries, Inc.	7924 Riopelle St., Detroit, Mich.
HC	Cole-Hersee Company	54 Old Colony Ave., Boston, Mass.
HE	Houde Engineering Corporation	537 E. Delvan Ave., Buffalo, N. Y.
HY	Hyatt Bearings Div. (General Motors Corp.)	P. O. Box 71, Harrison, N. J.
ICM	Ideal Clamp Mfg. Co., Inc.	435 Liberty Ave., Brooklyn 7, N. Y.
LPE	Lipe-Rollway Corporation	Geddes & Lipe Sts., Syracuse, N. Y.
M	Mack Mfg. Corporation	34th St. & 5th Ave., New York, N. Y.
MRC	Marlin-Rockwell Corp.	Jamestown, N. Y. (see GBD)
MZ	"Mazda"-General Electric Co.	Schenectady, N. Y.
ND	New Departure Mfg. Co.	1940 Hughes St., Bristol, Conn.
PF	Packard Electric Div. (General Motor Corp.)	Dana Ave., Warren, Ohio
PG	Pierce Governor Company	1605-35 Ohio St., Anderson, Ind.
PK	Parker-Kalon Corporation	200 Varick St., New York, N. Y.
PM	Pullman Standard Car Mfg. Co.	79 E. Adams St., Chicago, Ill.
PU	Purolator Products, Inc.	365 Frelinghuysen Ave., Chicago, Ill.
PWM	Powell Muffler Co., Inc.	720 Broad St., Utica, N. Y.
RCB	Reading Chain & Block Co.	Reading, Pa.
RG	Ross Gear & Tool Co.	Lafayette, Ind.
RJ	Rajah Co. (The)	53 Locust Ave., Bloomfield, N. J.
SFC	Schantz Furniture Co.	Allentown, Pa.
SK	Shakeproof Lock & Washer Co.	2501 Keeler Ave., Chicago, Ill.
SKF	SKF Industries, Inc.	Front St. & Erie Ave., Philadelphia, Pa.
SP	Spicer Mfg. Co.	4100 Bennett Rd., Toledo, Ohio
SU	Superior Universal Products Co.	Lima, Ohio
SW	Stewart-Warner	1828 Diversy Pkwy., Chicago, Ill.
TBC	Thompson-Bremer & Co.	1640 W. Hubbard St., Chicago, Ill.
TD	Timken-Detroit Axle Co.	Clark Ave., Detroit, Mich.
TIM	Timken Roller Bearing Co. (The)	1935 Kelly Ave., Canton, Ohio
TNP	Tinnerman Products, Inc. (Speed Nut Div.)	2038 Fulton Ave., Cleveland, Ohio
TR	Torrington Co. (The)	Torrington, Conn.
TRI	Trico Products Co.	817 Washington St., Buffalo, N. Y.
TRU	Tru Stop (Amer. Chain & Cable Co.)	Wilkes-Barre, Pa.
UC	United Carr Fastener Corp.	31 Ames St., Cambridge, Mass.
WE	Westinghouse El. & Mfg. Co.	East Pittsburgh, Pa.
WH	The Weatherhead Co.	300 E. 131st St., Cleveland, Ohio
Z	Zenith Carburetor Div. (Bendix Aviation Co.)	696 Hart Ave., Detroit, Mich.

LIST OF ABBREVIATIONS

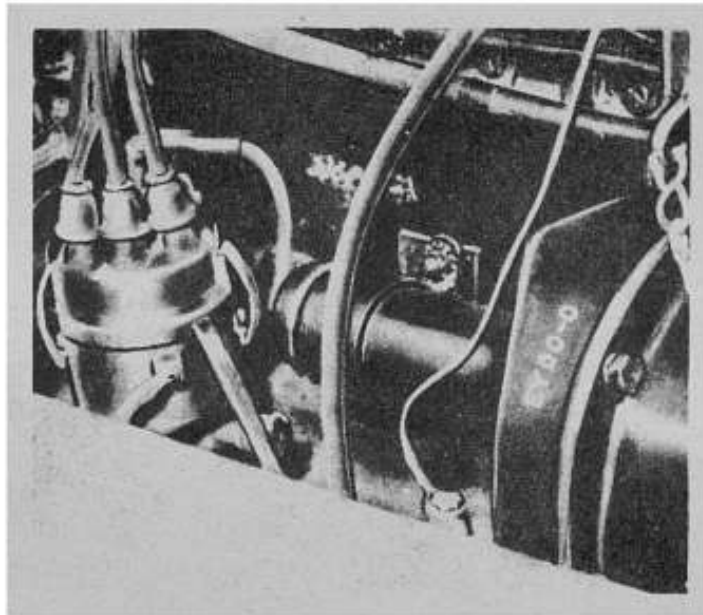
The following is a list of the standard abbreviations appearing in this catalog.

adj.....	adjustable	lgth.....	length
alloy-S.....	alloy steel	l.h.....	left hand
amp.....	ampere	lkg.....	locking
annld.....	annealed	mach.....	machine
asb.....	asbestos	med.....	medium
as req.....	as required	M.I.....	malleable iron
bg-hd.....	binding head	mm.....	millimeter
b-hd.....	button-head	m-screw.....	mounting screw
blk.....	black	NC.....	National coarse
br.....	brass	NF.....	National fine
bz.....	bronze	ni-pltd.....	nickel plated
cap.....	capacity	No.....	number
C.E.....	commutator end	NPT.....	National pipe thread
chr-alloy.....	chromium alloy	O.D.....	outside diameter
C.I.....	cast iron	O.S.....	oversize
ck.....	countersunk	rd-hd.....	round head
ck-hd.....	countersunk head	rd-pt.....	round point
cop.....	copper	rd-recessed-hd.....	round cross-recess head
cp.....	candlepower	reg.....	regular
c-pin.....	cotter pin	req.....	required
cup-pt.....	cup point	r.h.....	right hand
D.E.....	drive end	S.....	steel
deg.....	degree	s-fin.....	semi-finished
diam.....	diameter	sgle.....	single
dld.f/c-pin.....	drilled for cotter pin	sgle-cond.....	single conductor
dld.f/lkg-wire.....	drilled for locking wire	sgle-tung-fil.....	single tungsten filament
f/.....	for	sh.....	sheet
fil-hd.....	fillister head	sh.met.....	sheet metal
fl-ck-hd.....	flat countersunk head	spg.....	spring
fl-hd.....	flat head	sq-hd.....	square head
fl-pt.....	flat point	sq-nk.....	square neck
gal.....	gallon & galvanized	std.....	standard
hdl. (hdl.).....	handle	stght.....	straight
hex.....	hexagonal	thd.....	thread
hex-hd.....	hexagonal head	thk.....	thick
hgr-pt.....	hanger point	thkns.....	thickness
ht-trtd.....	heat treat	unfin.....	unfinished
hv.....	heavy	U.S.....	undersize
I.D.....	inside diameter	v.....	volt
in.....	inch	W.I.....	wrought iron
int.....	internal	w/.....	with
inter-chg.w/.....	interchangeable with	w/o.....	without
int-ext.....	internal-external	zn-pltd.....	zinc-plated
lgt.....	light		



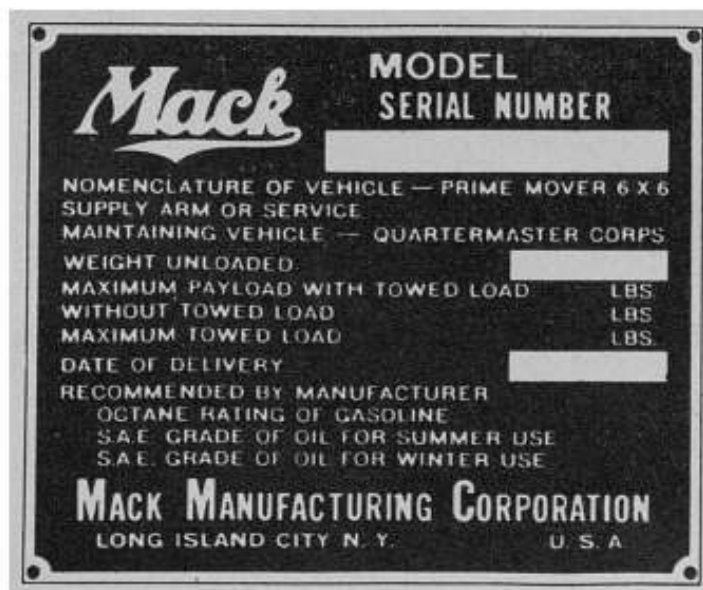
RA PD 333304

FIGURE A—CHASSIS SERIAL NUMBER LOCATION



RA PD 333305

FIGURE B—ENGINE SERIAL NUMBER LOCATION



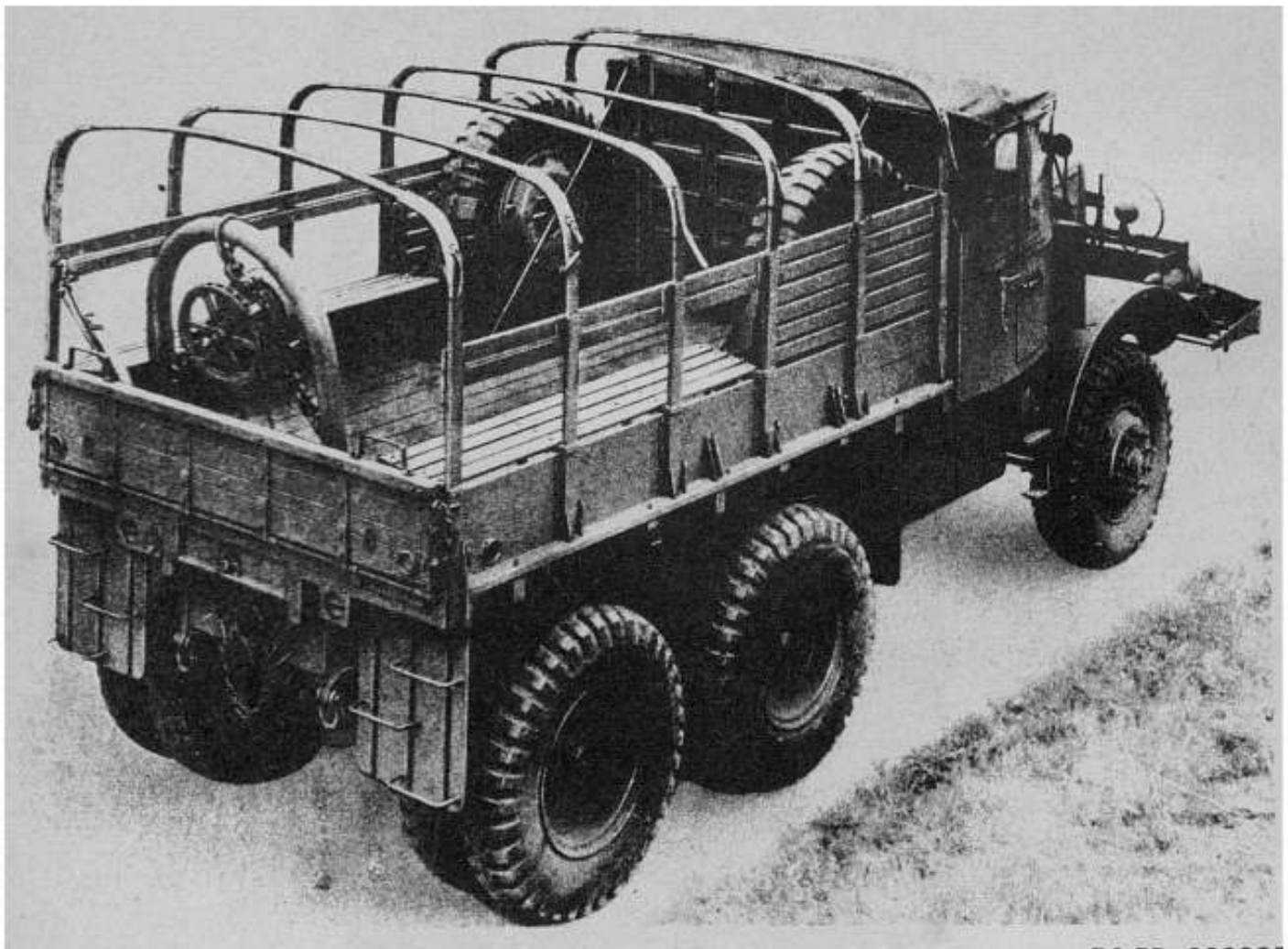
RA PD 333306

FIGURE C—CHASSIS NAME PLATE



RA PD 333300

FIGURE D—TRUCK—LEFT FRONT VIEW



RA PD 333301

FIGURE E—TRUCK—RIGHT REAR VIEW