

DEPARTMENT OF THE ARMY
SUPPLY CATALOG

ORD 9 SNL G-527

GROUP G

LIST OF ALL SERVICE PARTS

OF

TRAILER, WATER TANK, 250-GAL, 1-TON, 2-WHEEL

Supersedes ORD 9 SNL G-527, 31 January 1944, including C1, 3 March 1944,
C2, 25 April 1944, and C3, 15 February 1945

This catalog is correct to 30 January 1953

DEPARTMENT OF THE ARMY
WASHINGTON 25, D.C., 24 February 1953

Department of the Army Supply Catalog ORD 9 SNL G-527 is published for the information and guidance of all concerned.

[AG 461 (2 Feb 53)]

BY ORDER OF THE SECRETARY OF THE ARMY:

OFFICIAL:

WM. E. BERGIN
Major General, USA
The Adjutant General

J. LAWTON COLLINS
Chief of Staff, United States Army

DISTRIBUTION:

Active Army:

Tech Svc (1); Tech Svc Bd (2); AFF (3); AA Comd (2); OS Maj Comd (10); Base Comd (2); MDW (3); Log Comd (5); A (10); CHQ (2); Div (2); Regt 9 (2); Bn 9 (2); CO 9 (2); FT (2); Sch (5) except 9 (50); PMS&T 9 (1); Gen Dep (2); Dep 9 (10); POE (5); OSD (2); PRGR 9 (10); Ars 9 (10); Proc Dist 9 (10); Mil Dist (3).

NG: Same as Active Army except one copy to each unit.

Army Reserve: Same as Active Army except one copy to each unit.

For explanation of distribution formula, see SR 310-90-1.

CONTENTS

	Page
INTRODUCTION.....	1
NOTES.....	3
GROUP 06 ELECTRICAL SYSTEM.....	8
GROUP 11 AXLE.....	13
GROUP 12 BRAKE SYSTEM.....	13
GROUP 13 WHEELS, HUBS, AND DRUMS.....	20
GROUP 15 FRAME AND BRACKETS.....	23
GROUP 16 SPRINGS.....	28
GROUP 17 FENDERS AND APRONS.....	32
GROUP 18 BODY.....	33
GROUP 22 MISCELLANEOUS ACCESSORIES.....	38
ALPHABETICAL INDEX.....	41
ORDNANCE AND MANUFACTURER'S PART NUMBER INDEX.....	43
STOCK NUMBER INDEX.....	54

INTRODUCTION

1. GENERAL. a. This catalog is a list of items of the 250-gallon, 1-ton, 2-wheel, water tank trailer arranged according to standard government grouping.

Note: Many of the parts listed herein are not stocked for issue. See ORD 7 and ORD 8 sections of this catalog for listings of those parts stocked for issue to the various levels of maintenance. When parts not listed in the ORD 8 are needed, separate requisition for these parts should be forwarded through normal supply channels with justification therefor.

b. This list of all service parts is to be used for identification and storage purposes. Every individual part is not necessarily stored by itself; many parts are stored as authorized assemblies. Such assemblies are indicated herein. The components of such assemblies are listed alphabetically within the group, with the total quantity of each part required for that particular application.

c. An explanation of symbols (such as *H-1*, *H-6*, etc) used throughout this catalog is included under heading NOTES.

d. If stock numbers in this list do not correspond with those in ORD 8, the numbers in publication of later effective date will govern.

e. The prefix letter and number of the stock number (ie, G104, G103, or G167) usually signifies that the particular part or component was originally coded under the major-item designation for that SNL, and does NOT mean that the part is used ONLY in that major item. All subsequent catalogs for different items will include the same stock number for this same part.

f. Additional application of items listed in this publication, if any, are contained in ORD 5-5 series.

g. For prices of items contained herein, see the appropriate catalog of the ORD 5-3 series.

h. The major item, 250-gallon, 1-ton, 2-wheel, water tank trailer, is stored, issued, and reviewed under ORD 3 SNL G-1.

i. For full information relative to the Ordnance section of the Department of the Army Supply Catalog, including the purposes and uses thereof, the procedure followed, and the principles employed in its compilation, see ORD 1.

2. MAJOR ITEM DESIGNATION. The major item covered in this catalog is designated as a general purpose vehicle as defined in AR 700-105.

3. PUBLICATION PERTAINING TO THIS VEHICLE. The following technical manual pertains to this vehicle and components thereof: TM 9-883.

4. INTERCHANGEABILITY OF COMPONENTS. The drawbar, springs, axle, wheels and brakes and components are the same as or are interchangeable with those of trailer, 1-ton, payload, 2-wheel, cargo, and trailer, 3-ton, 2-wheel, ammunition, M26.

5. SERIAL NUMBER LOCATION. The serial number for this vehicle is located on the front of the trailer frame channel.

6. ILLUSTRATIONS. This catalog contains illustrations to aid the user in locating and identifying parts. These are placed before each group to be convenient for reference in connection with the text for that group. For each part identified on an illustration, the noun, part number, and group number of the item are given. The prefix portion of the figure number indicates the group to which it pertains; the suffix indicates the sequence number within that group (that is, figure 06-1 signifies illustration number 1 in group 06).

7. COMPONENTS OF ASSEMBLIES. Whenever any doubt might exist as to what items are included as components of assemblies, an explanatory note or a complete listing of such component parts is shown.

8. ATTACHING PARTS. Attaching parts such as bolts, nuts, rivets, washers, etc., are indented immediately under the item which they attach. Attaching parts for any attached item not procured will be found listed under their proper alphabetical listing in the appropriate group; but they will not be in-

dented. Whenever two or more similar items having the same attaching parts, such as left and right brake backing plate, are listed, they are placed one immediately following the other and the attaching parts for both are covered by a single listing under the second item.

9. DEFINITION OF LOCATIONAL TERMS. The *right* and *left* sides of the trailer are determined by standing at the back of the trailer and looking towards the landing gear. All components are designated *right* and *left* as viewed from the rear of the vehicle.

10. DESCRIPTION. a. Items appearing within a subgroup that lists components of and/or items related to only *one* assembly or subassembly automatically assume as part of their official nomenclature the title of the pertinent subgroup. (Example: "BRACKET, drawbar" is an entry in subgroup 1503. The complete description of the item is "BRACKET, drawbar," "DRAWBAR" being the subgroup title.)

b. Items appearing within a subgroup that lists *more than one* assembly or *more than one* group of related items are listed with their complete description. (Example: "CAP, hub" is an entry in subgroup 1311. The complete description of the item is as shown, the title of the subgroup being "WHEELS, HUBS, AND DRUMS.")

11. HOW TO FIND PARTS. This catalog is arranged and cross-indexed so that parts can be found easily even though only one of the several identifying factors is known. The various ways in which parts can be located are as follows:

a. If only the nomenclature (basic noun-name) is known, and the subgroup is not, refer to the alphabetical index in the back of the catalog. This index will give the subgroup in which the part is listed. As the part names are arranged in alphabetical order within this subgroup, the complete listing of the part can readily be found.

b. If any one of the numbers—ordnance, stock, or manufacturer's—is known, refer to the appropriate numerical index in the back of the catalog. This index will give the subgroup number in which the part will be found.

c. If the shape, use, function, or location of the part is known, refer to illustrations in which the part is likely to appear until a picture of the part is found. The arrow pointing to the part will lead out to a listing of the name, part number, and subgroup number, which will permit locating the complete listing of the part.

12. STANDARD GOVERNMENT GROUPING. The parts listed in this catalog are arranged by groups and subgroups and alphabetically within these groups. Parts are grouped primarily on the basis of their function rather than location. This arrangement facilitates identification and selection of parts. Refer to paragraph 11, "HOW TO FIND PARTS."

06—ELECTRICAL SYSTEM

0608 Switch and Parts
0609.1 Tail Lights and Lamp-Units
0613.1 Wiring Harnesses
0617 Coupling (Electric)

11—AXLE

1100 Axle

12—BRAKE SYSTEM

1201 Hand Brake

13—WHEELS, HUBS, AND DRUMS

1311 Wheels, Hubs, and Drums
1313 Tires and Tubes

15—FRAME AND BRACKETS

1501 Frame Assemblies and Brackets
1503 Drawbar
1507 Landing Gear

16—SPRINGS

1601 Springs

17—FENDERS AND APRONS

1701 Fenders and Aprons

18—BODY

1808 Hose Rack
1811.1 Water Tank
1811.2 Water Tank Parts
1811.3 Water Tank Hose, Strainer, and Parts
1811.4 Water Faucets and Parts
1811.5 Water Faucet Boxes and Parts
1811.6 Water Piping Parts

22—MISCELLANEOUS ACCESSORIES

2202 Reflectors
2206 Water Hand Pump and Parts
2210 Vehicular Data Plate

13. ABBREVIATIONS. The following is a list of abbreviations appearing in this catalog:

adj.....	adjustable	med.....	medium
al.....	aluminum	MI.....	malleable iron
alloy-S.....	alloy steel	NC.....	National Coarse Thread
assy.....	assembly	NF.....	National Fine Thread
b-hd.....	button head	NPT.....	National Pipe Thread
br.....	brass	OD.....	outside diameter
bz.....	bronze	od.....	olive drab
cd or zn-pltd.....	cadmium or zinc plated	opng.....	opening
cop.....	copper	phos-ctd.....	phosphate coated
cp.....	candlepower	psi.....	per square inch
cup-pt.....	cup point	rd-hd.....	round head
deg.....	degree	reg.....	regular
diam.....	diameter	RH.....	right hand
dld-f/c-pin.....	drilled for cotter pin	ru.....	rubber
dld-f/lkg-wire.....	drilled for locking wire	S.....	steel
ext-teeth.....	external teeth	s-fin.....	semi finish
ft.....	foot or feet	sltd.....	slotted
glvd.....	galvanized	sq-hd.....	square head
hd.....	head	SR.....	single row
hex.....	hexagonal	std.....	standard
hv.....	heavy	stght.....	straight
ID.....	inside diameter	thk.....	thick
in.....	inch	tnd.....	tinned
int-teeth.....	internal teeth	unfin.....	unfinished
lea.....	leather	v.....	volt
lg.....	long	w/-.....	with
LH.....	left hand	w/o.....	without
lt.....	light	zn-pltd.....	zinc plated
mach.....	machine		

14. MANUFACTURERS' SYMBOLS. The following symbols, preceding the manufacturers' part numbers, appear in this catalog:

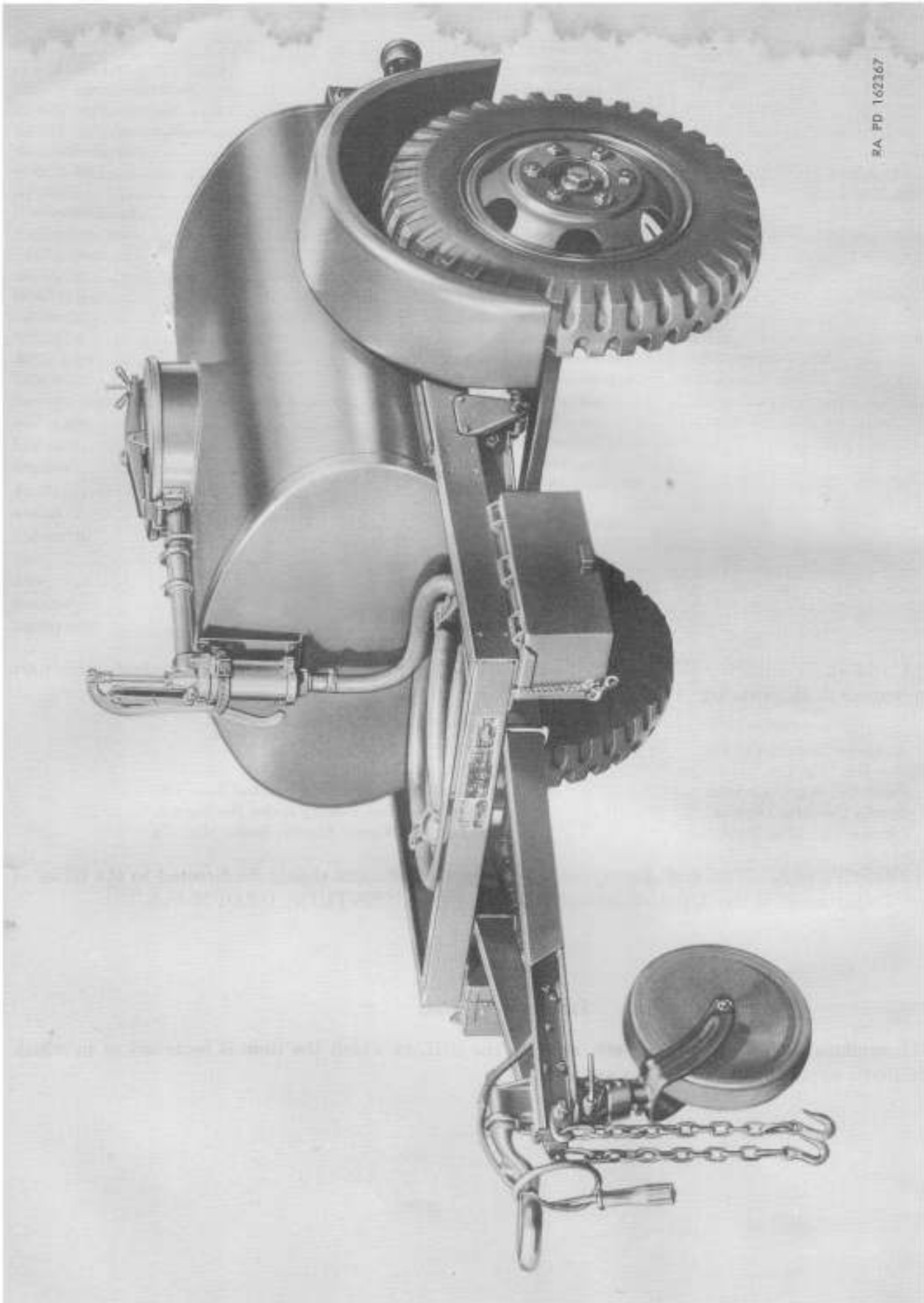
<i>Symbol</i>	<i>Manufacturer</i>	<i>Symbol</i>	<i>Manufacturer</i>
AMB	American Bantam Car Co.	DG	The Deming Co.
BNH	Ben Hur Mfg. Co.	GER	Gerstenslanger Co.
BW	Budd Co., Wheel Division	MYB	The F. E. Myers and Bros. Co.
BX	Bendix Products Division	TIM	The Timken Roller Bearing Co.
CCM	Checker Cab Mfg. Corp.	WEB	Warner Electric Brake Mfg. Co.

15. SUGGESTIONS. Notice of discrepancies or suggested changes should be directed to the Chief of Ordnance, Department of the Army, Washington 25, D. C., ATTENTION: ORDFM-Pub.

NOTES

Explanation of Symbols

H-1 SNL symbols such as H-1, H-6, etc, refer to the SNL in which the item is reviewed or in which additional applications of the item are listed.



9A PD 162367

Figure 1. Trailer, 1-ton, 2-wheel, water tank, 250-gal.—left front view.

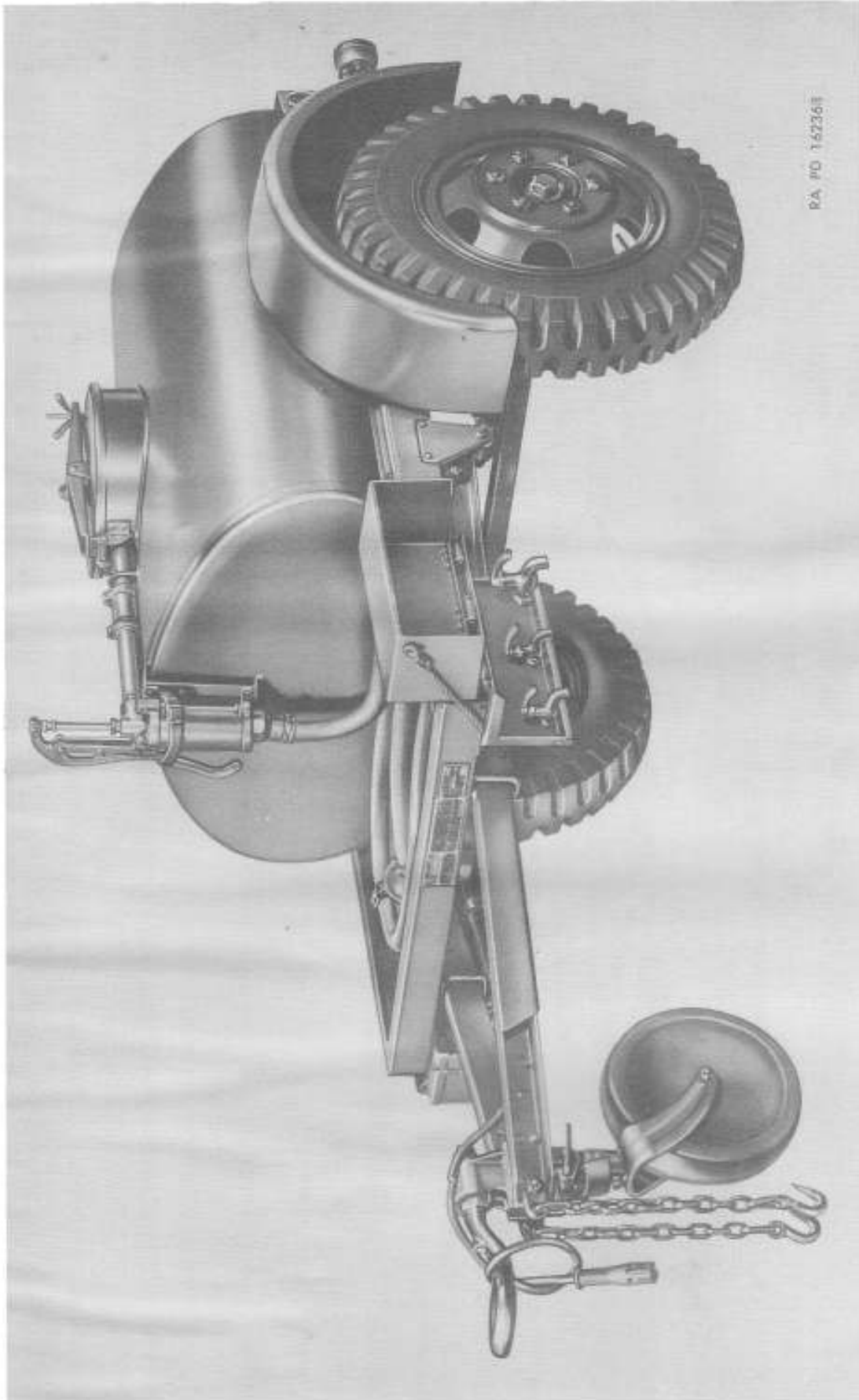
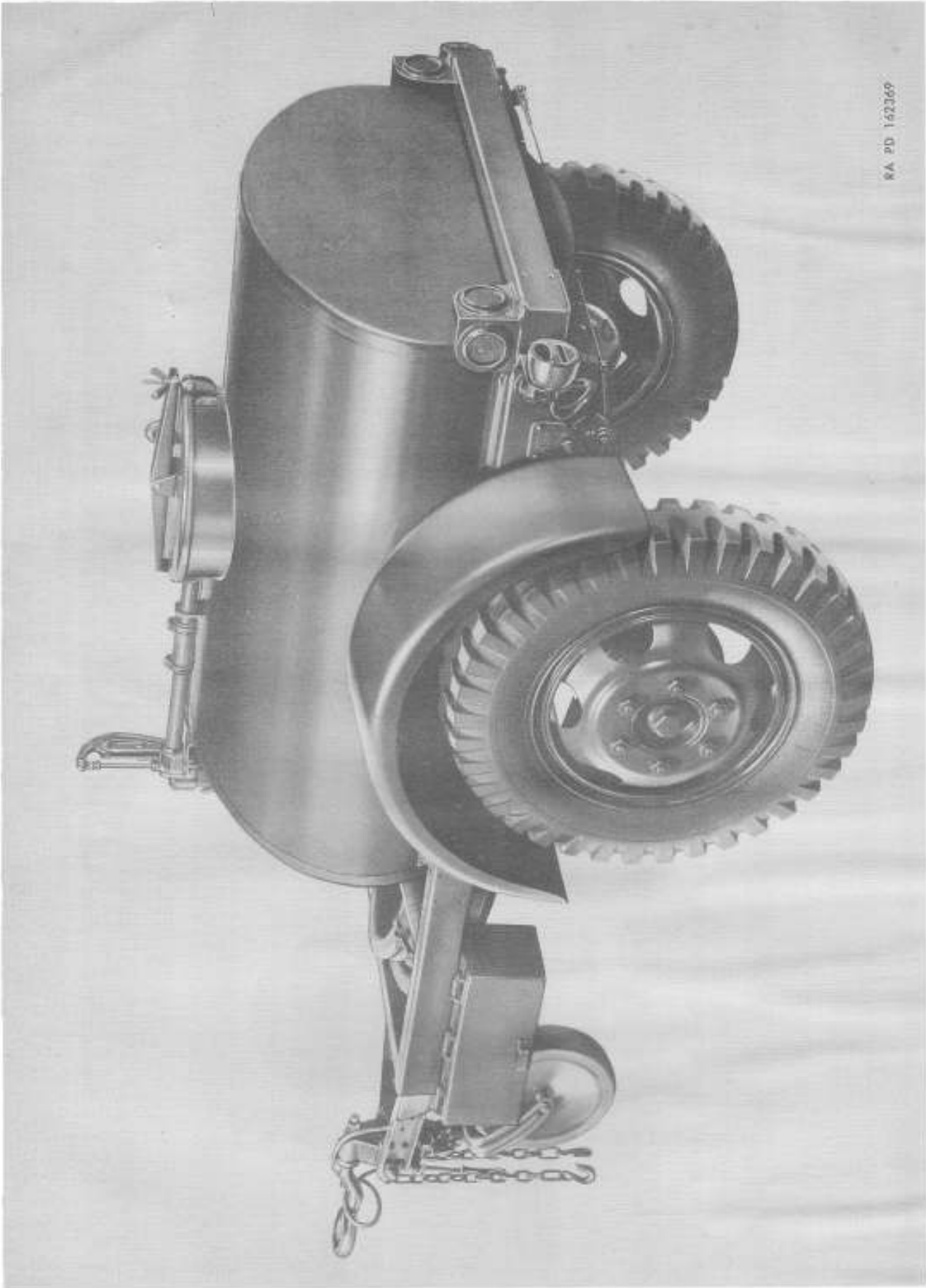


Figure 2. Trailer, 1-ton, 2-wheel, water tank, 250-gal—left front view, with water box cover lifted.



RA 2D 162369

Figure 3. Trailer, 1-ton, 2-wheel, 250-gal—left rear view.



RA PD 162370

Figure 4. Trailer, 1-ton, 2-wheel, water tank, 250-gal—right rear view, with water box cover lifted.

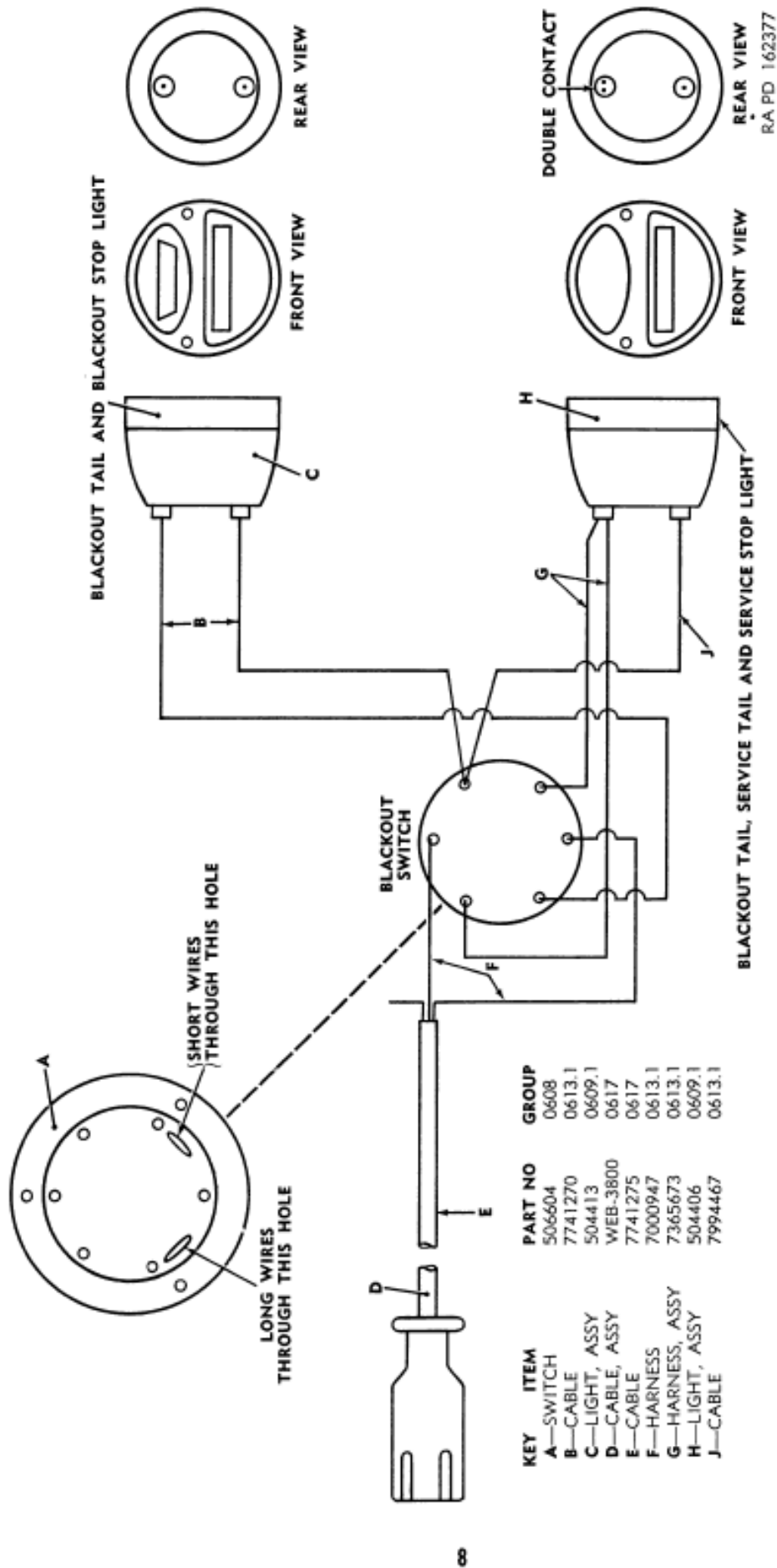


Figure 06-1. Wiring diagram.